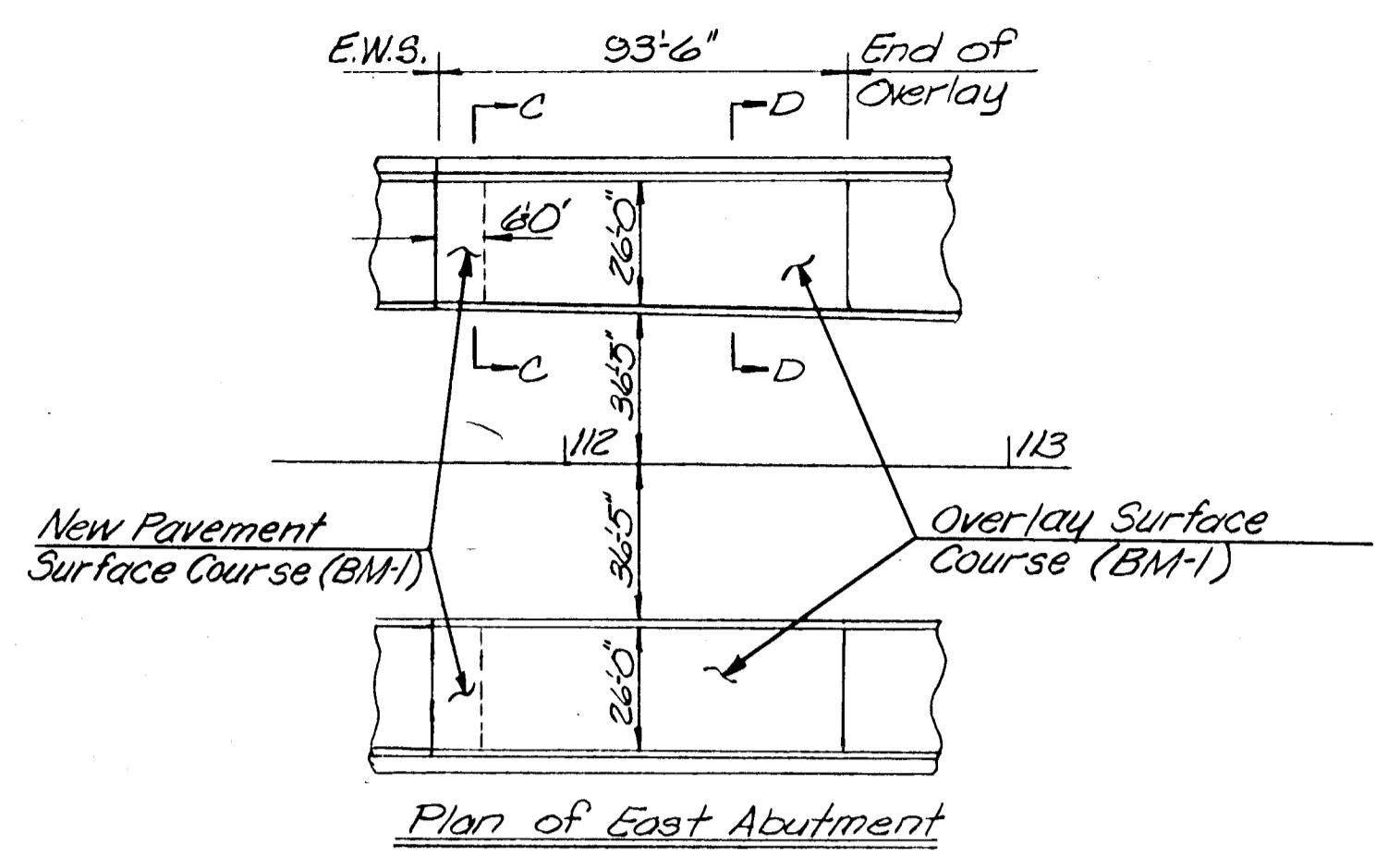
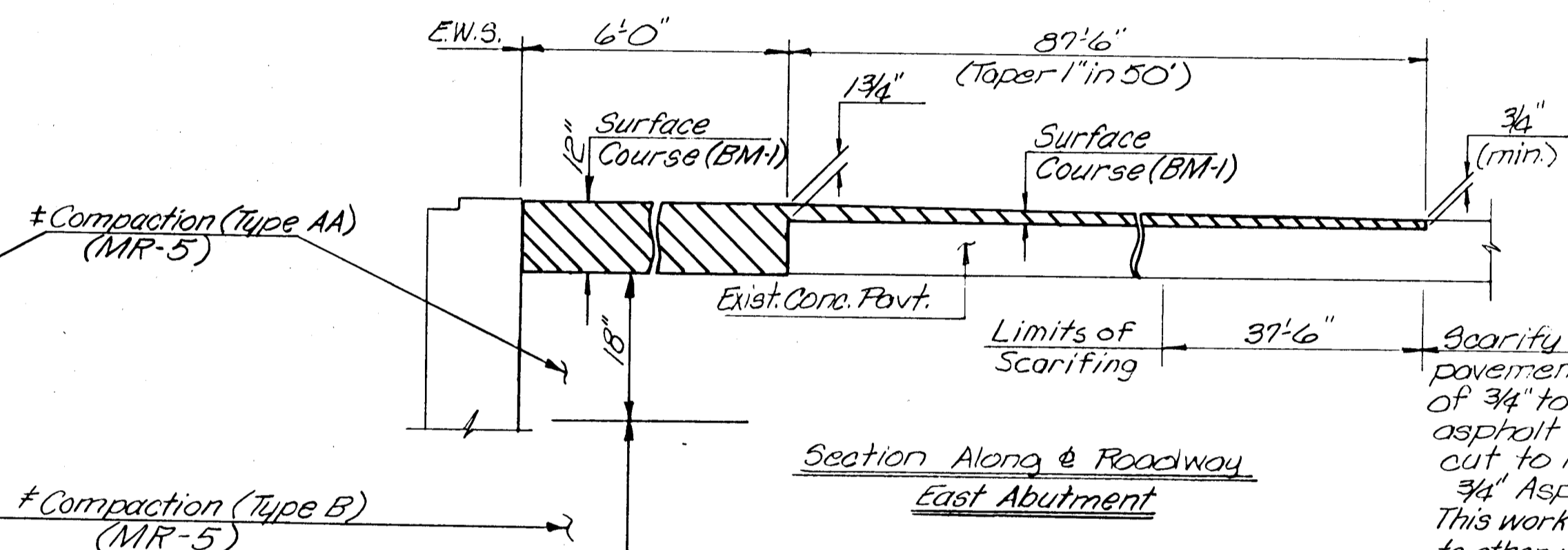
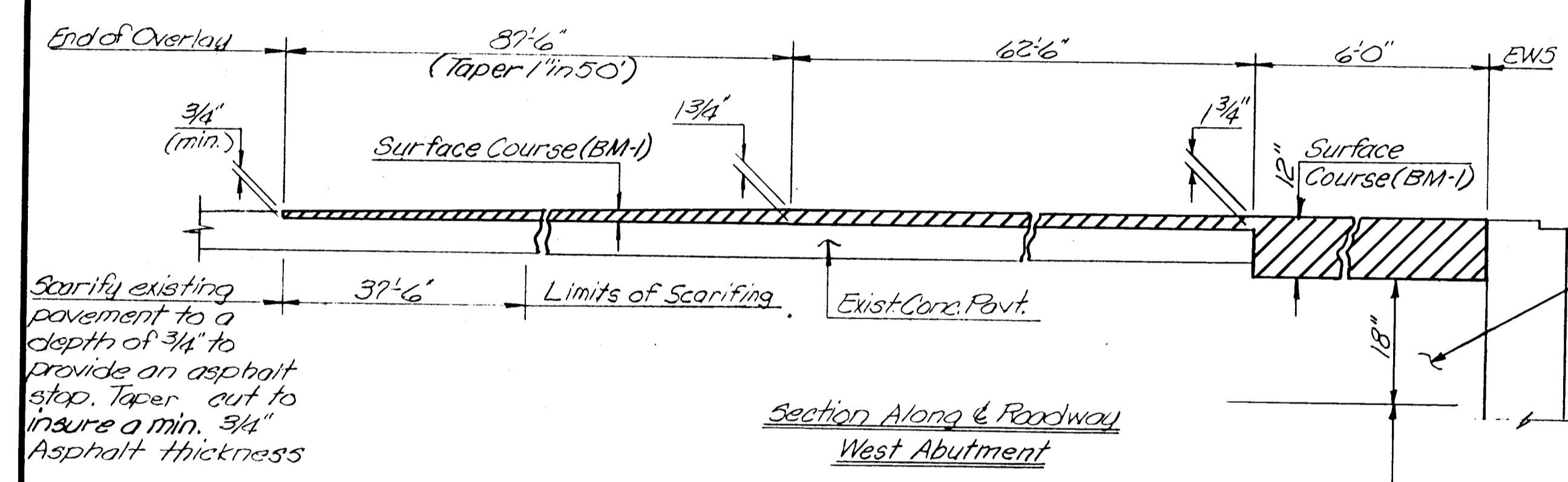


⊕ Roadway width begins to taper from 26'-0" to 28'-0" at a point 89.62 ft. from E.W.S. on W.B. Lane and 40.0 ft. from E.W.S. on E.B. Lane.

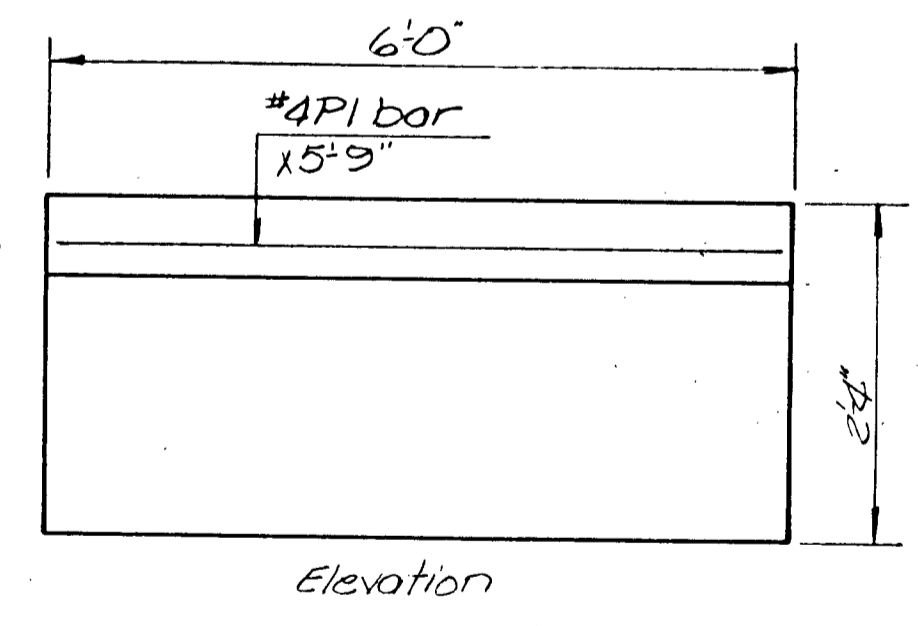
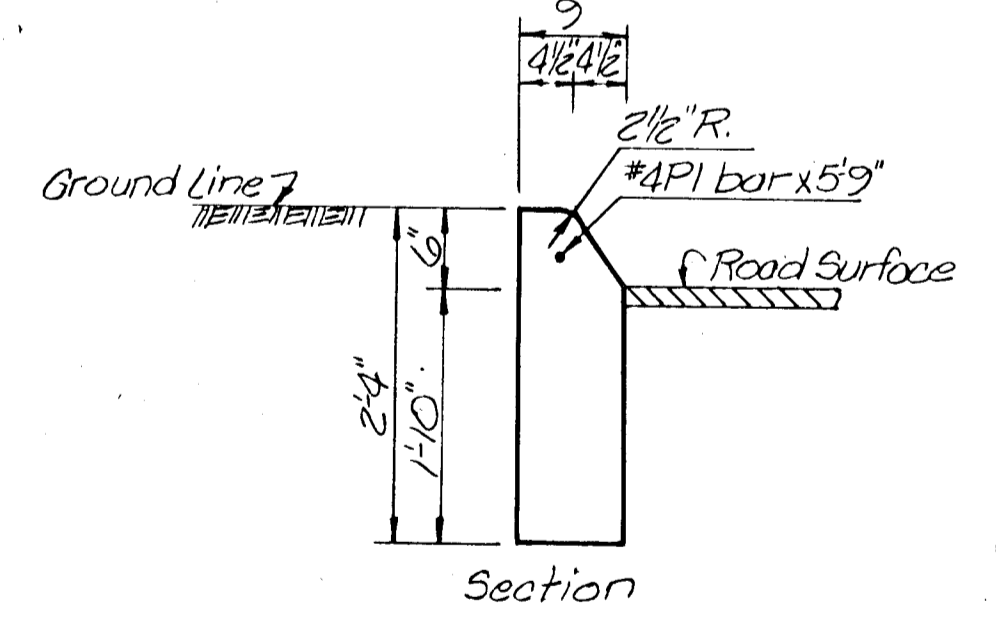
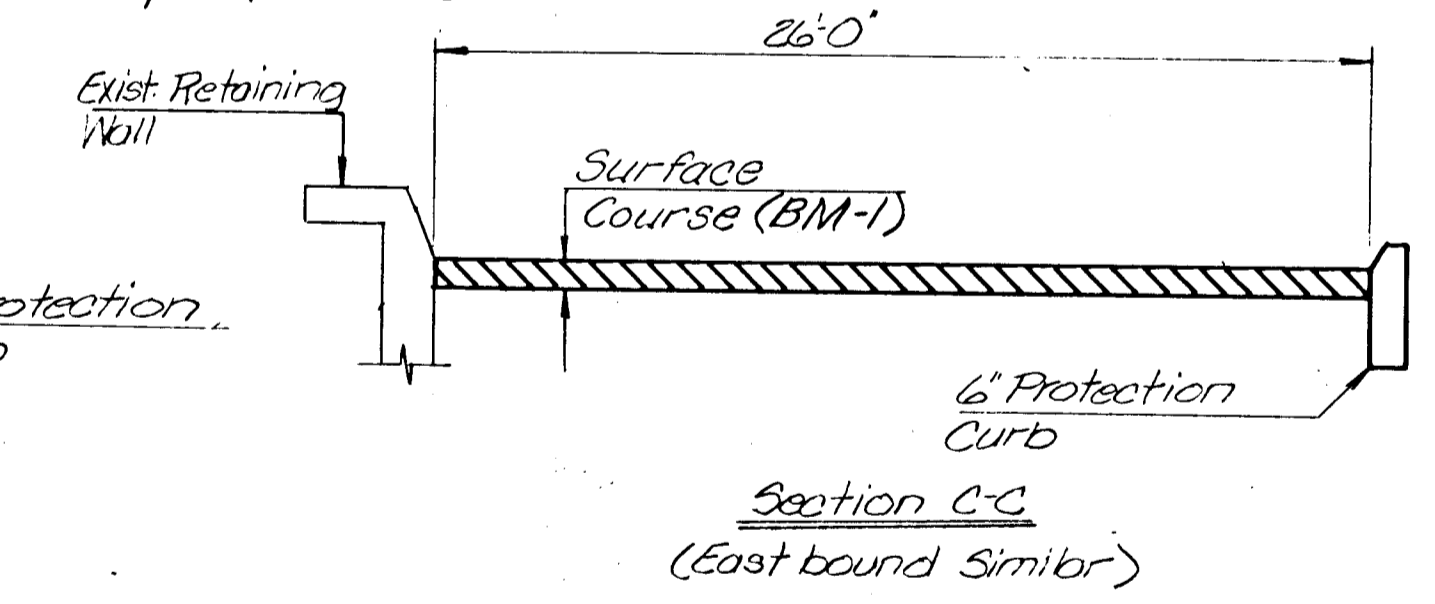
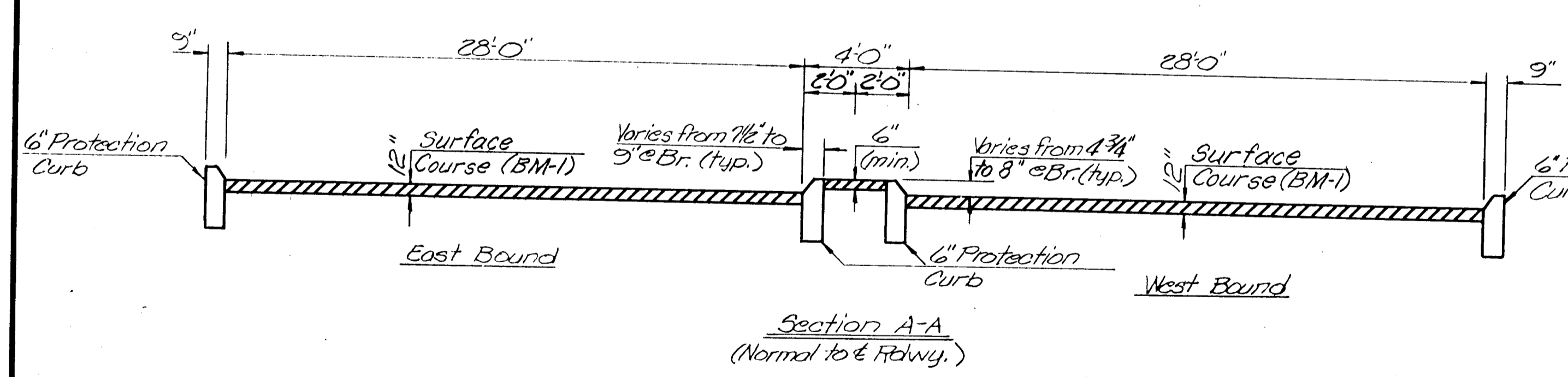


Quantities	
⊗ Aggregate for Bituminous Surface Course (BM-1)	136.0 Tons
⊗ Asphalt Cement (AC-5)	8.0 Tons
Emulsified Asphalt (SS-1H)	1.0 Tons
Protection Curb (6") (AE)	36 Lin.Ft.

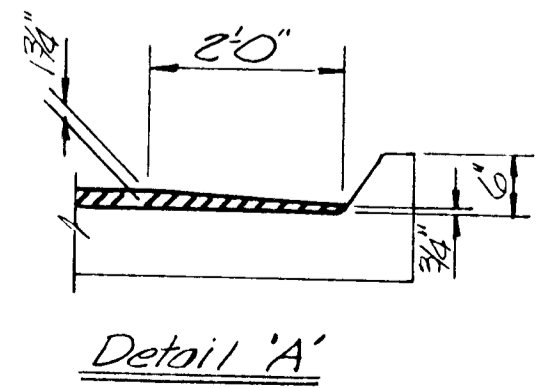
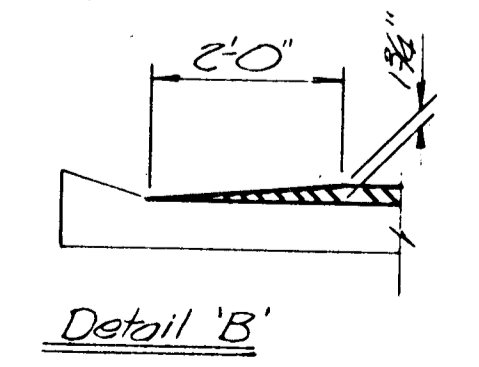
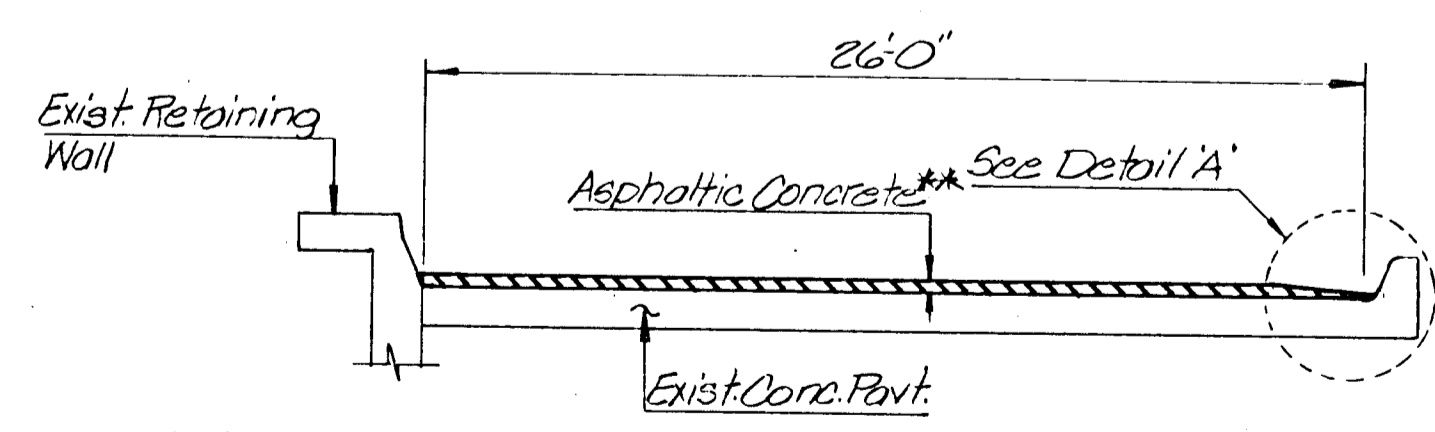
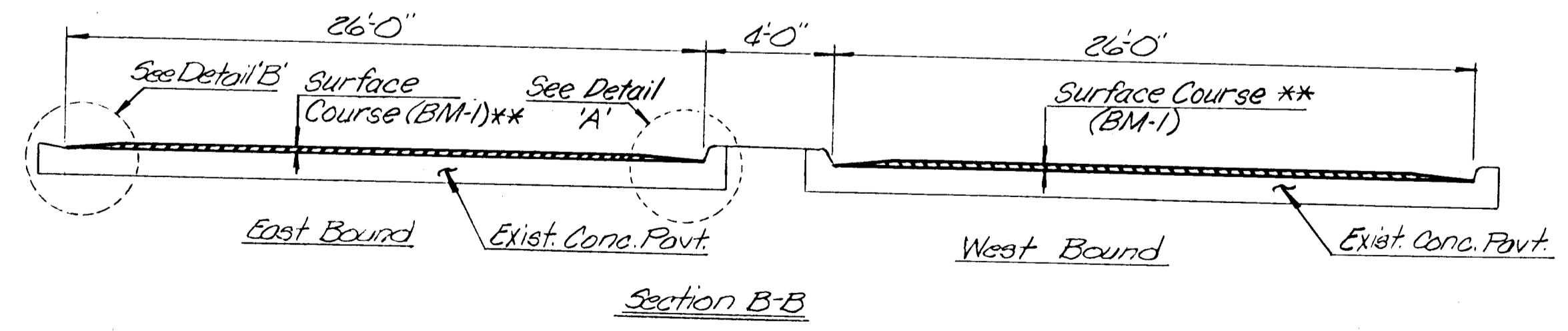
⊗ Computed at the rate of 145 lbs./ft.³ (Mixed).
 ⊗ ⊗ Computed at the rate of 0.06052 ton/ton of aggregate.



Thickness indicated for all construction which is paid for on a weight or volume basis are approximate and may vary to correct for unevenness in the foundations or for other normal unevenness encountered in placement operations.
 A tack coat of SS-1H shall be provided between each lift of all base courses and surface courses and under the first lift of base or surface courses when they are placed on an existing bituminous, brick or concrete surface, when so ordered by the Engineer and at the rate designated by him. Quantities are included for these tacks calculated at the rate of 0.10 gal./sq.yds. Bituminous Material quantities calculated on the basis of 8.328 Lbs. per gal.
 Individual lift thicknesses will be determined in the field, by the Engineer, in accordance with the Standard Specifications.
 This work shall be subsidiary to other items.



Detail of 6" Protection Curb



** Thickness Varies

Note: The overlay shall be placed so that the existing superelevation and drainage are preserved.

3					
2					
1					
NO.	DATE	REVISIONS	BY	APP'D	
KANSAS DEPARTMENT OF TRANSPORTATION Br. No. 54-87-25.80 Bridge Repair					
APPROACH PAVEMENT DETAILS					
Proj. No. 54-87-5942(2) Sedgwick Co.					
SHEET NO. 16 OF 32	SCALE	APP'D	QUANTITIES	TRACED	
DESIGNED EAM	DETAILED RCF	APP'D	QUAN. CK. RAM	TRACED	
DESIGN CK. SGB	DETAIL CK. SGB				