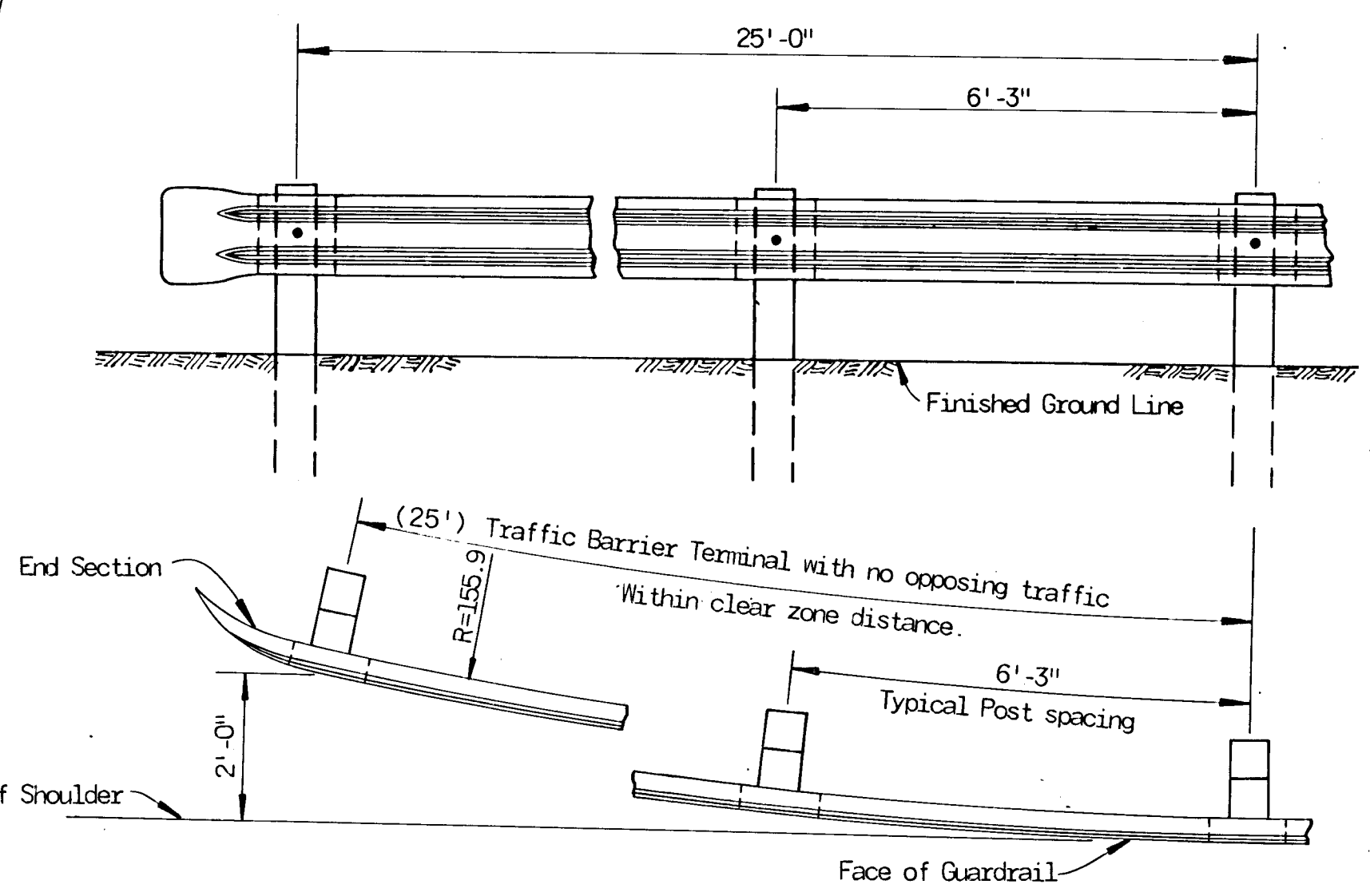
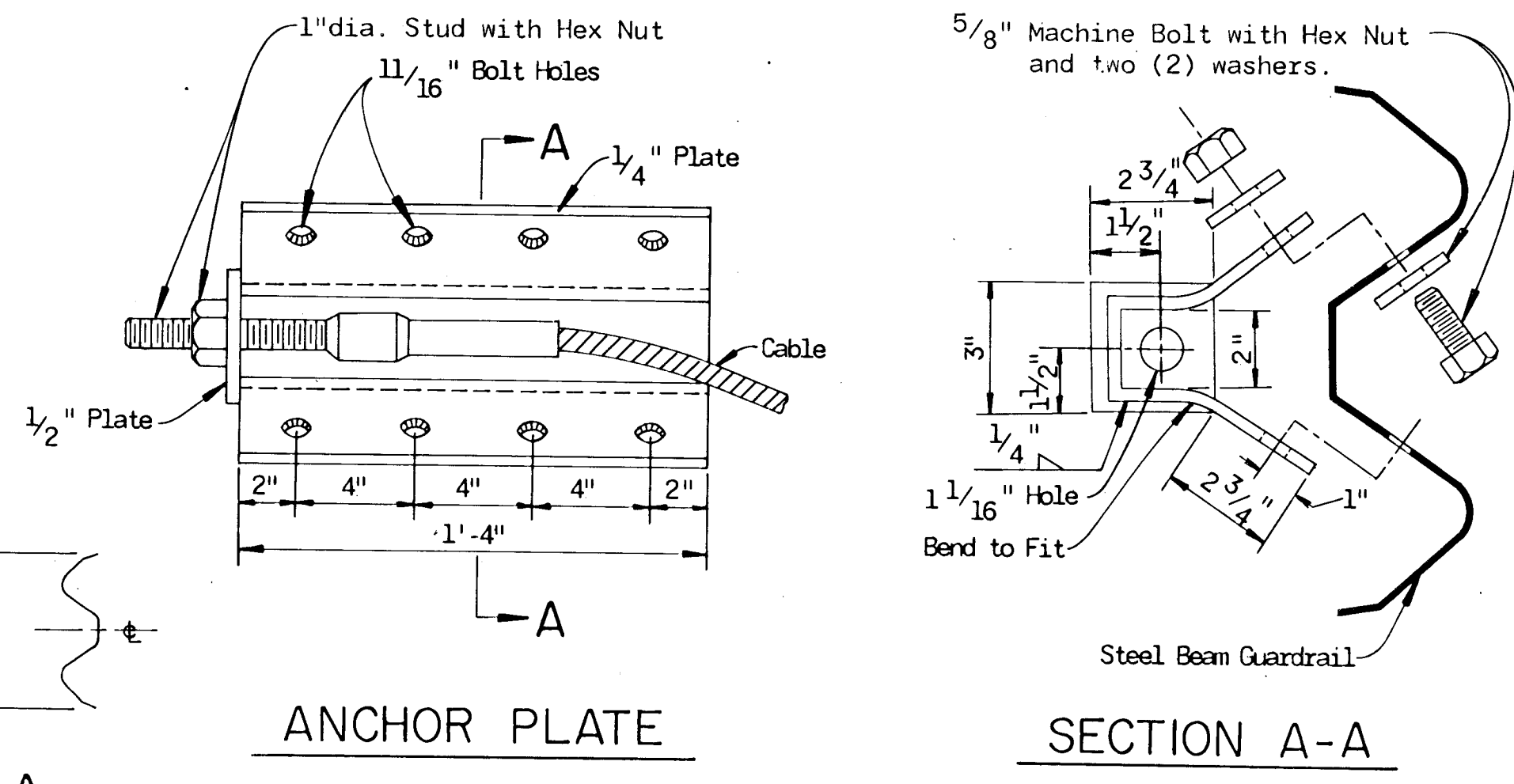


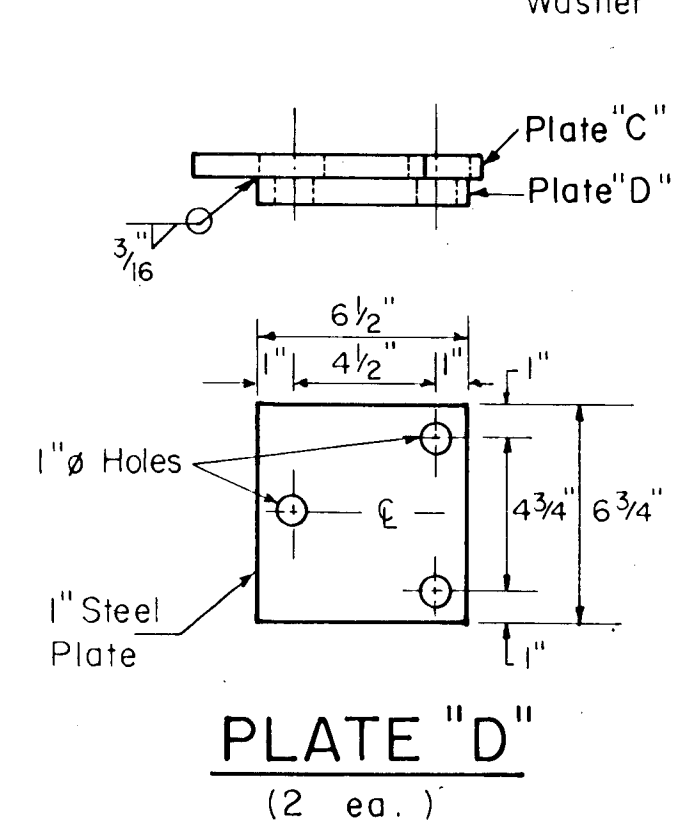
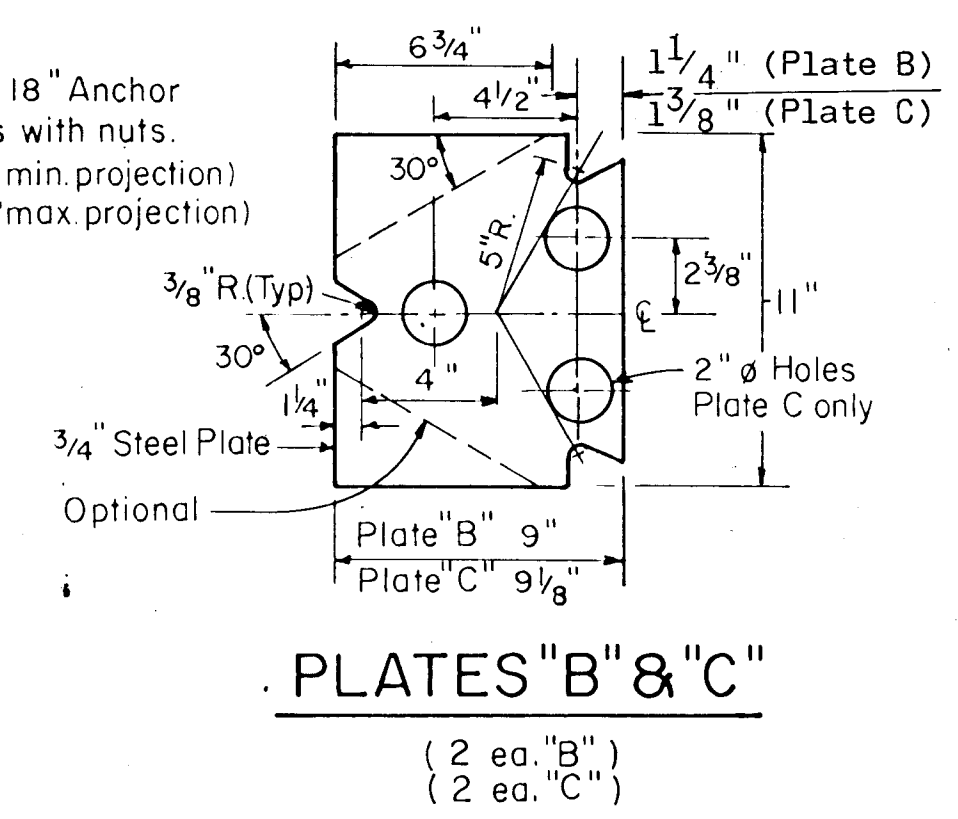
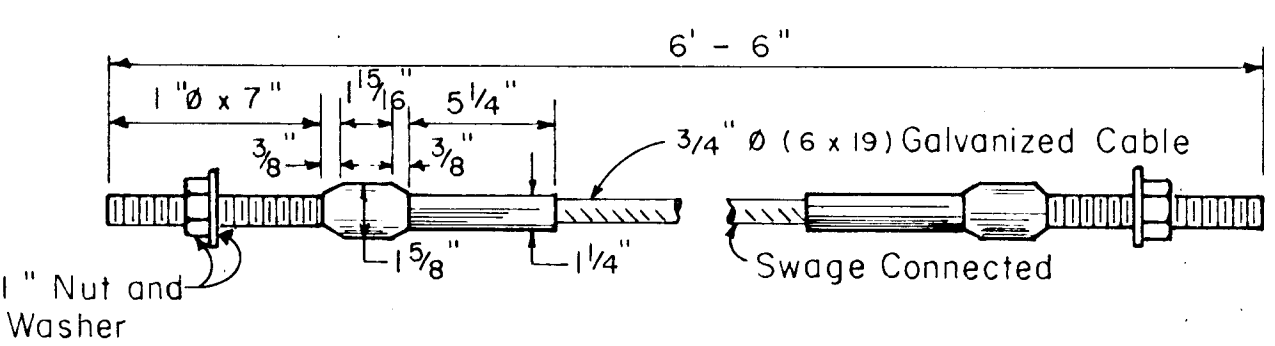
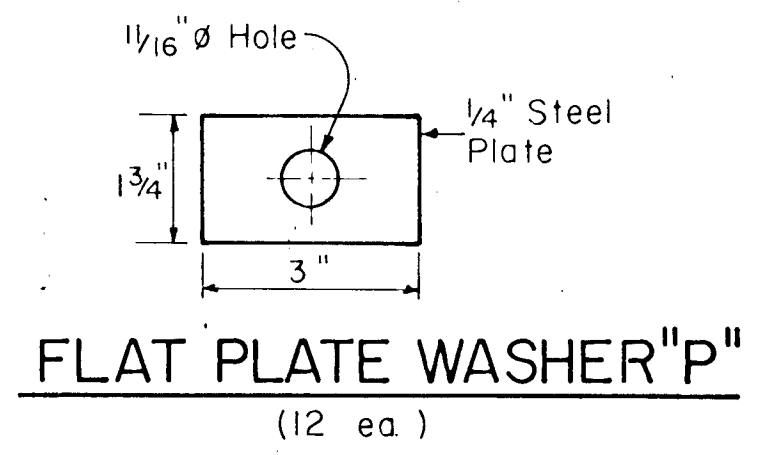
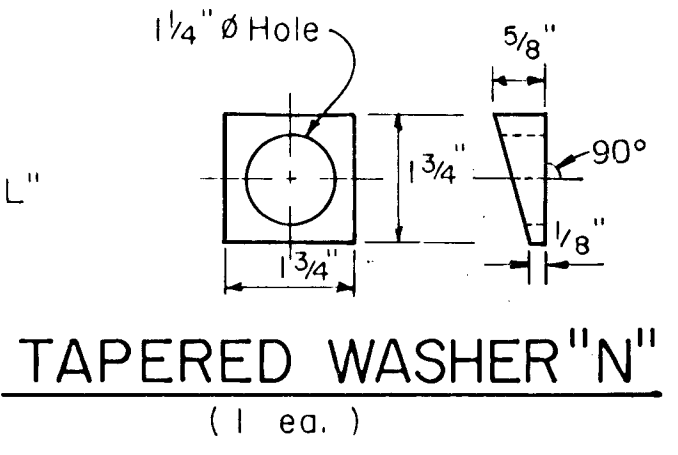
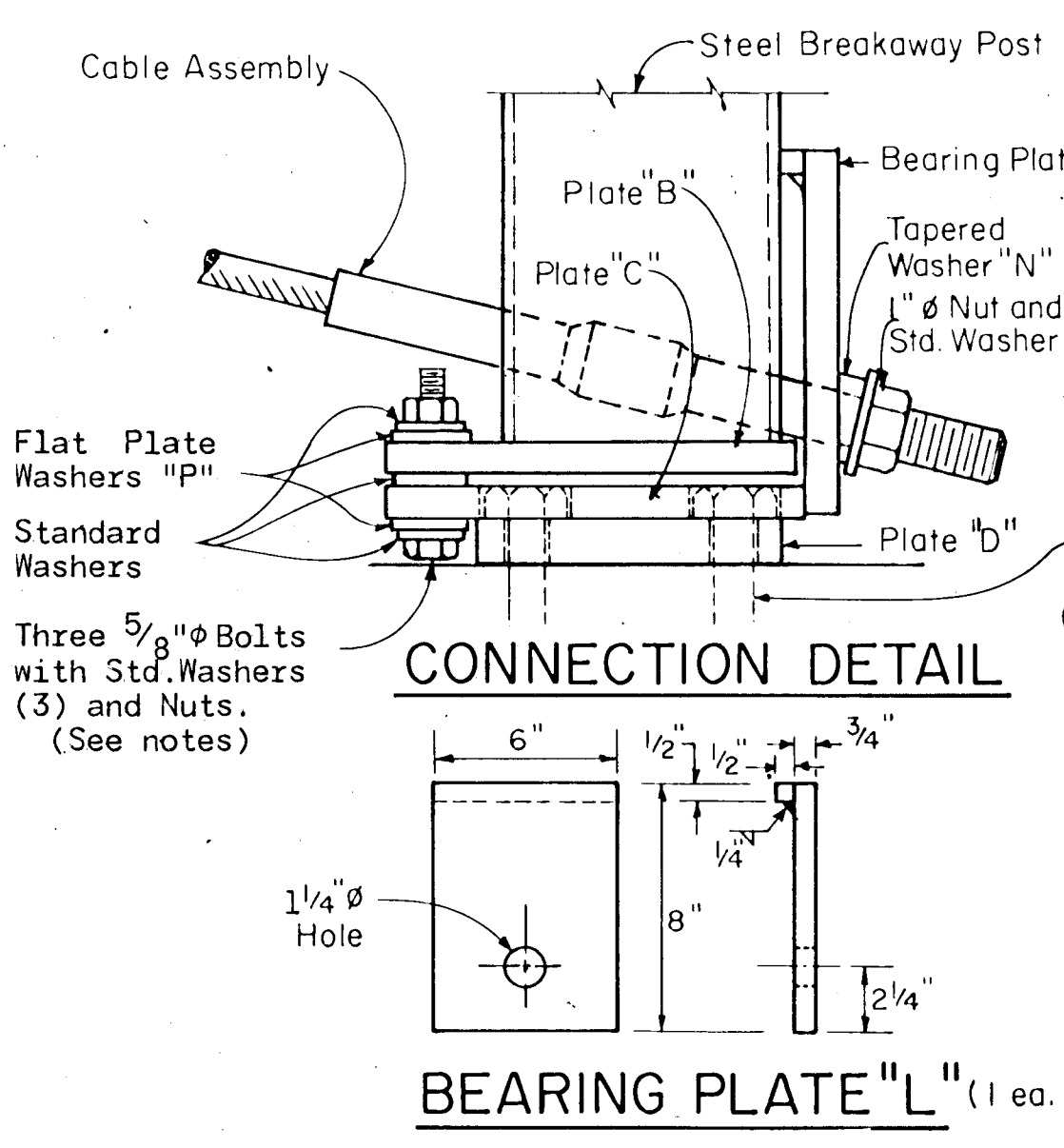
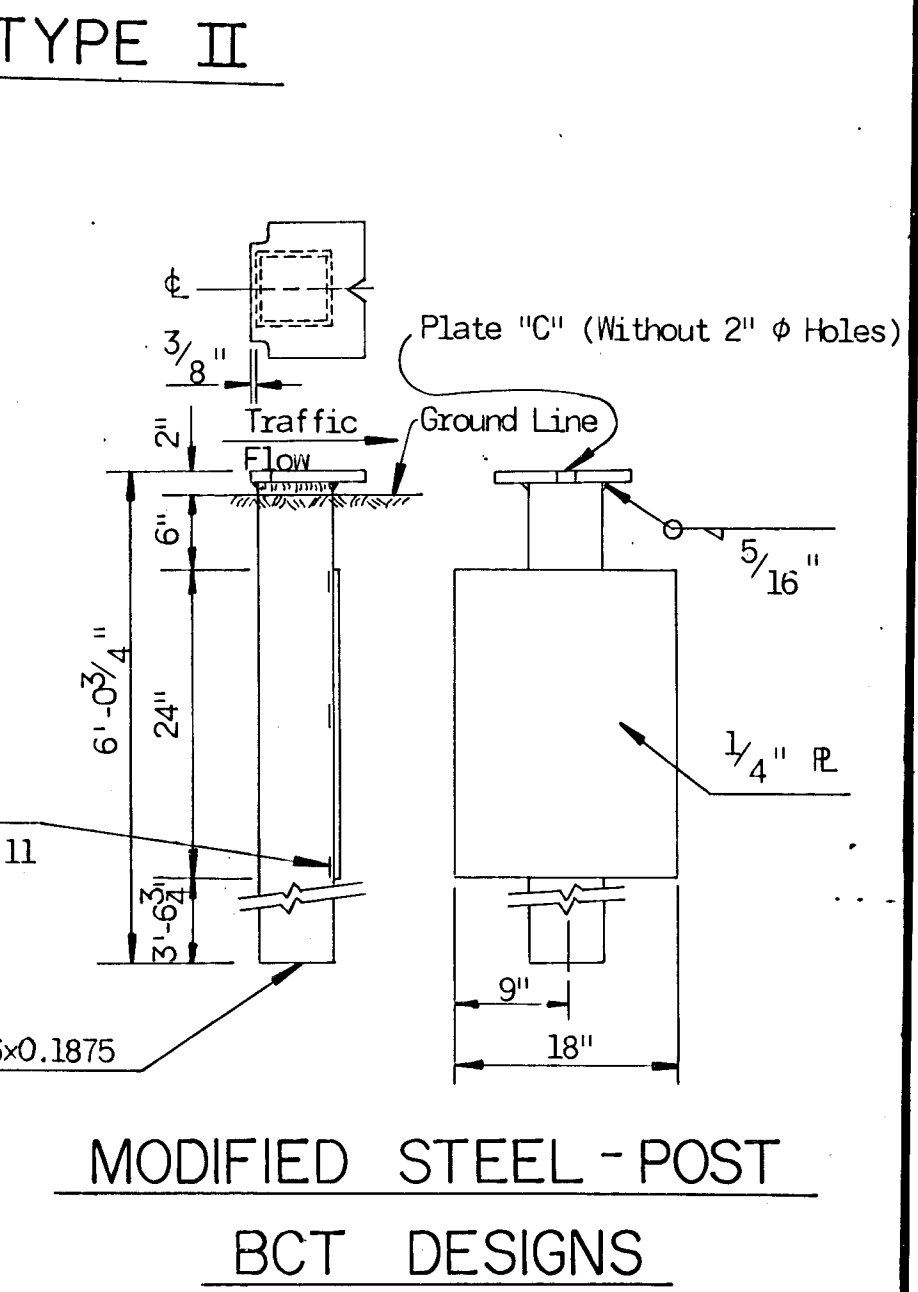
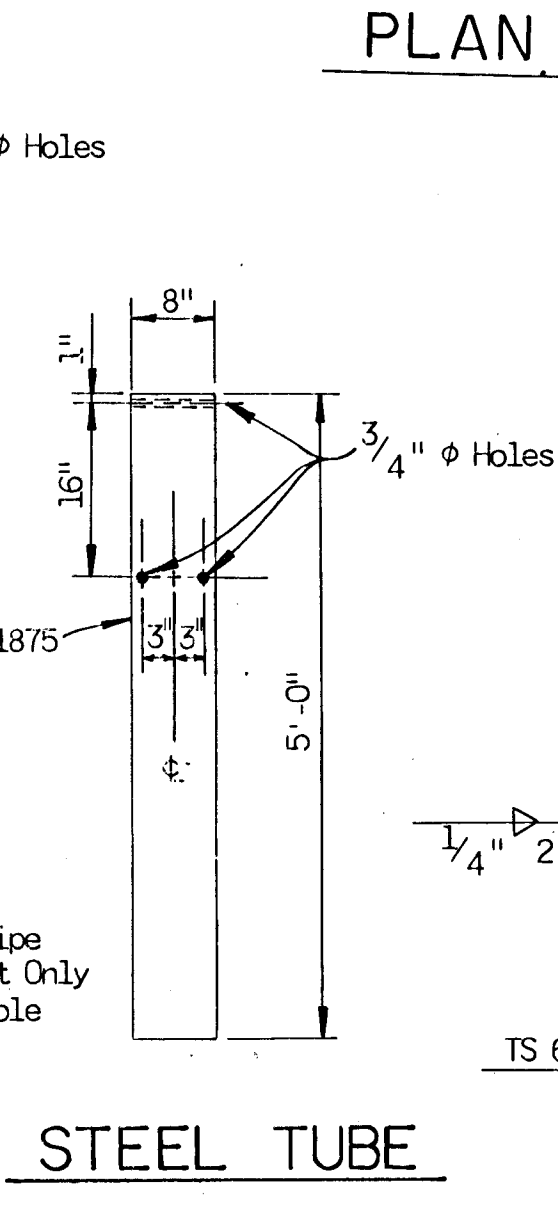
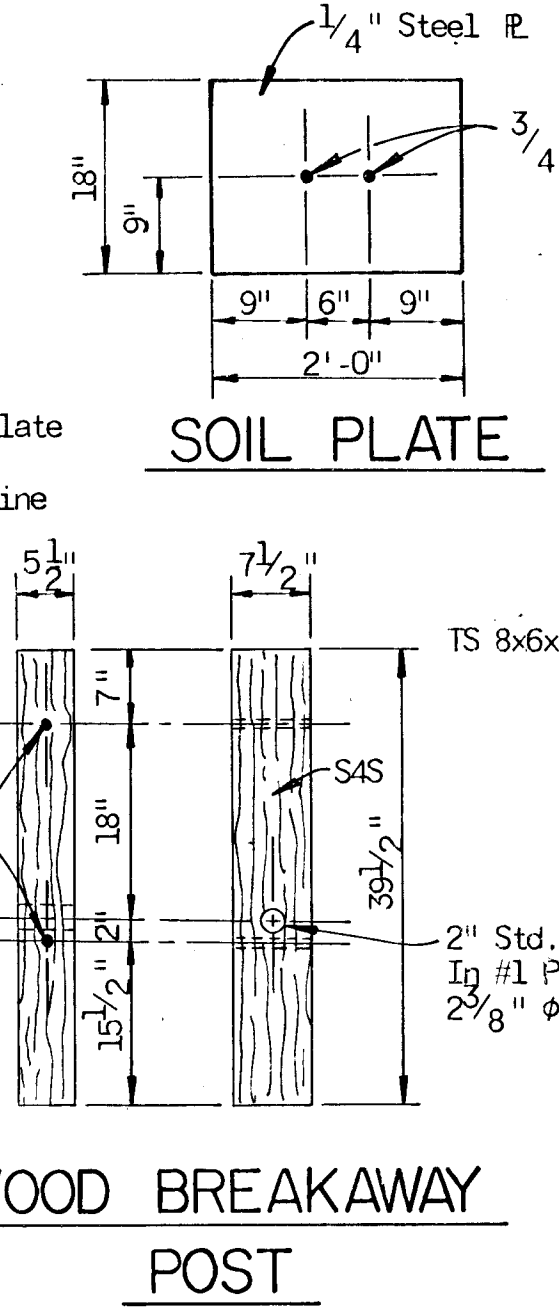
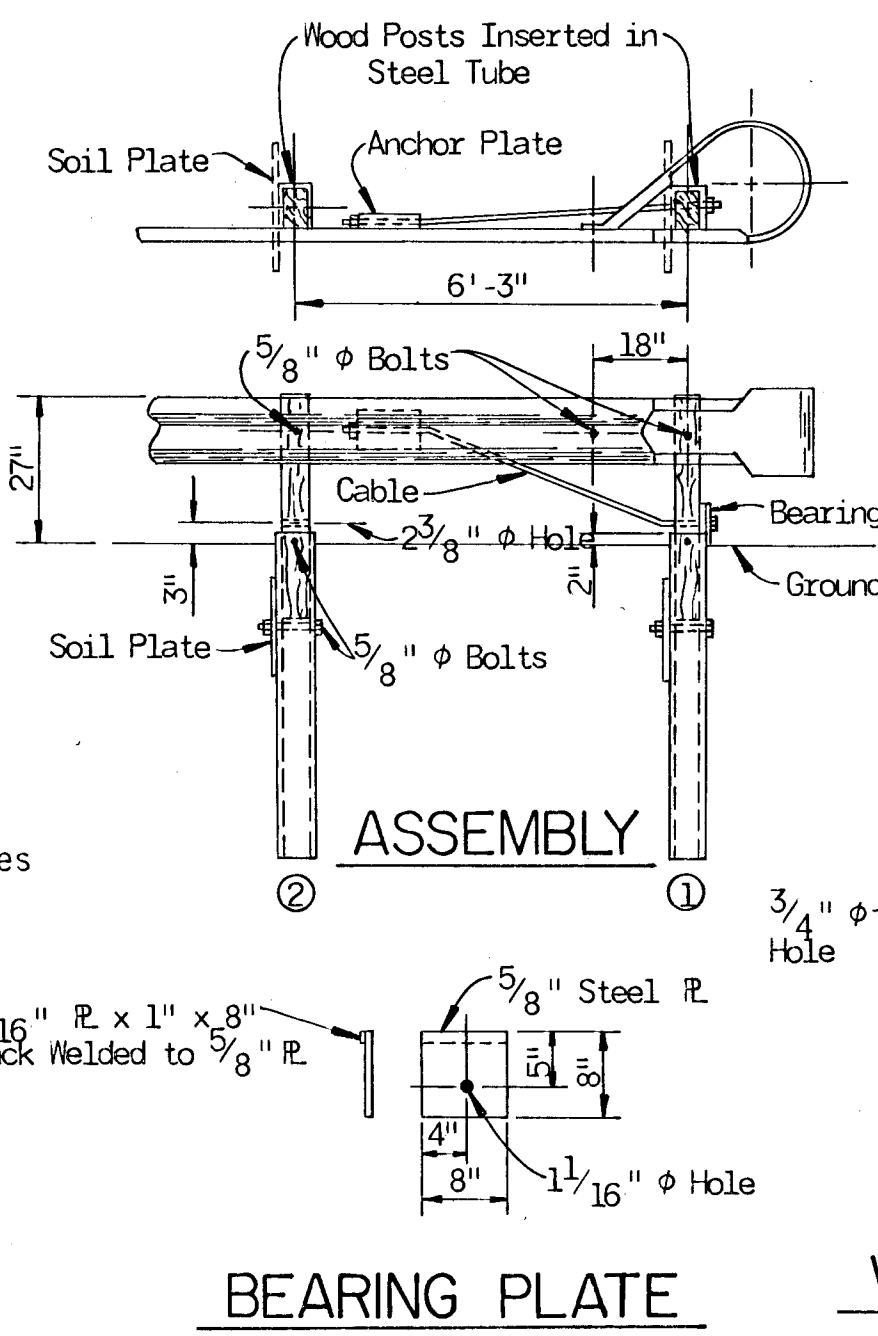
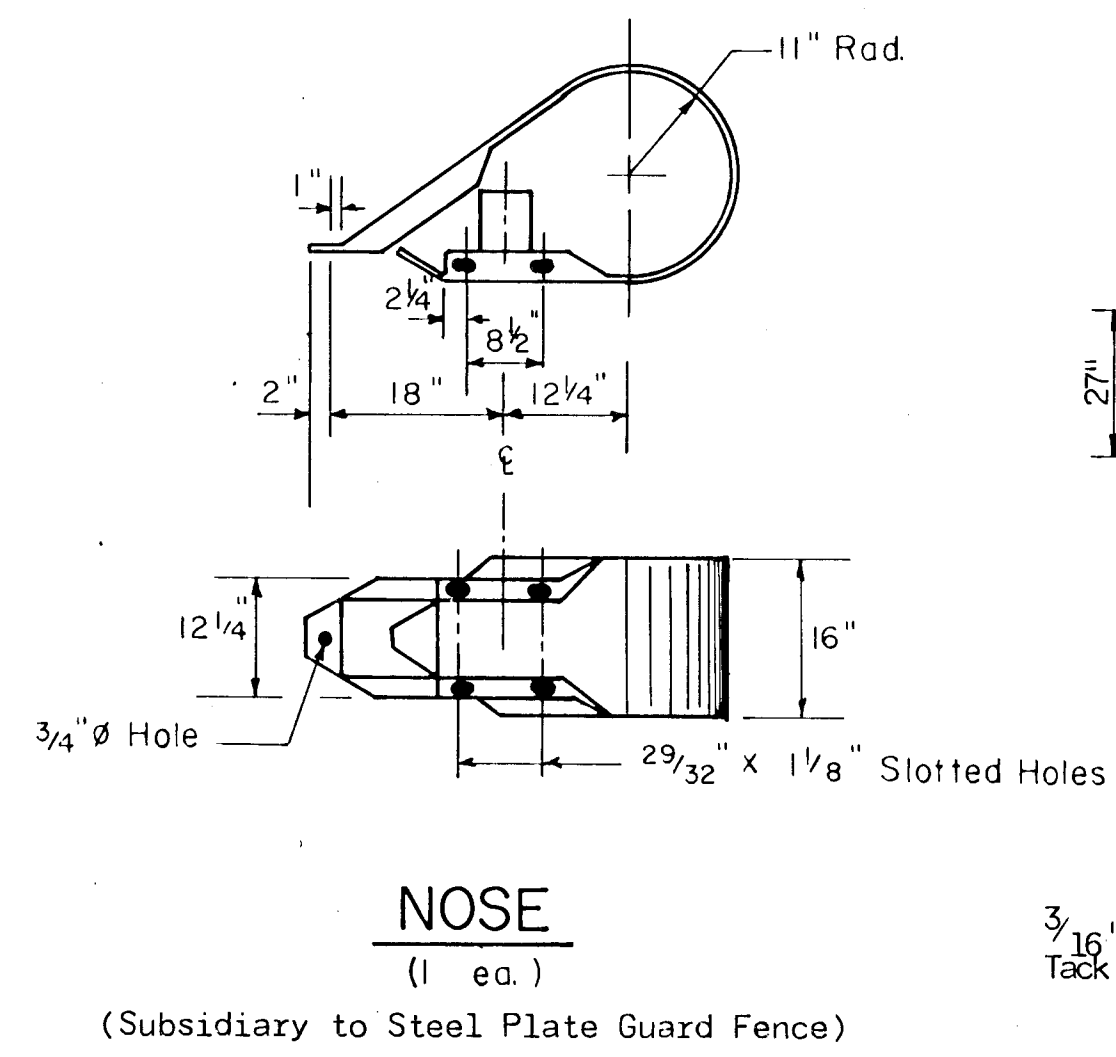
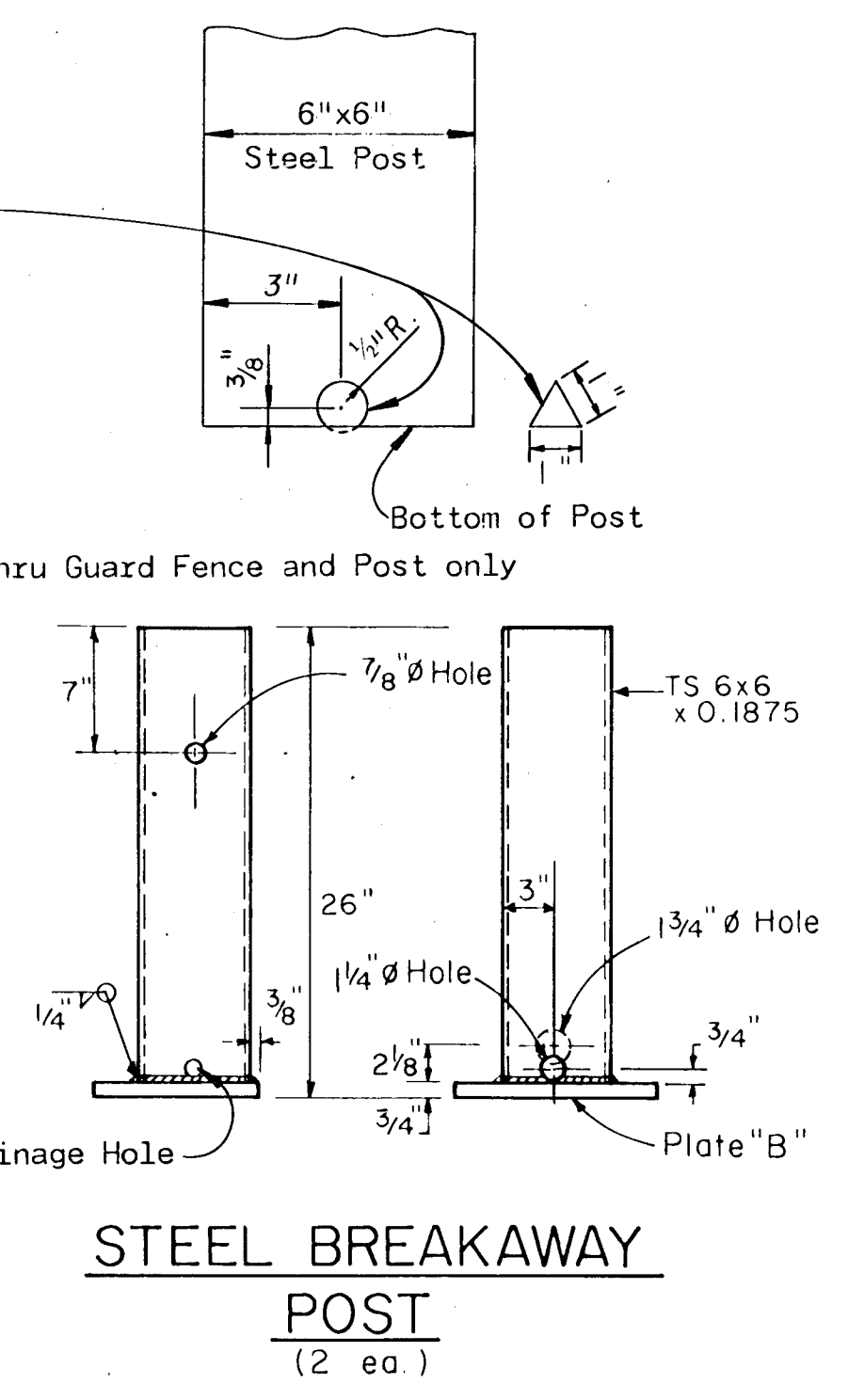
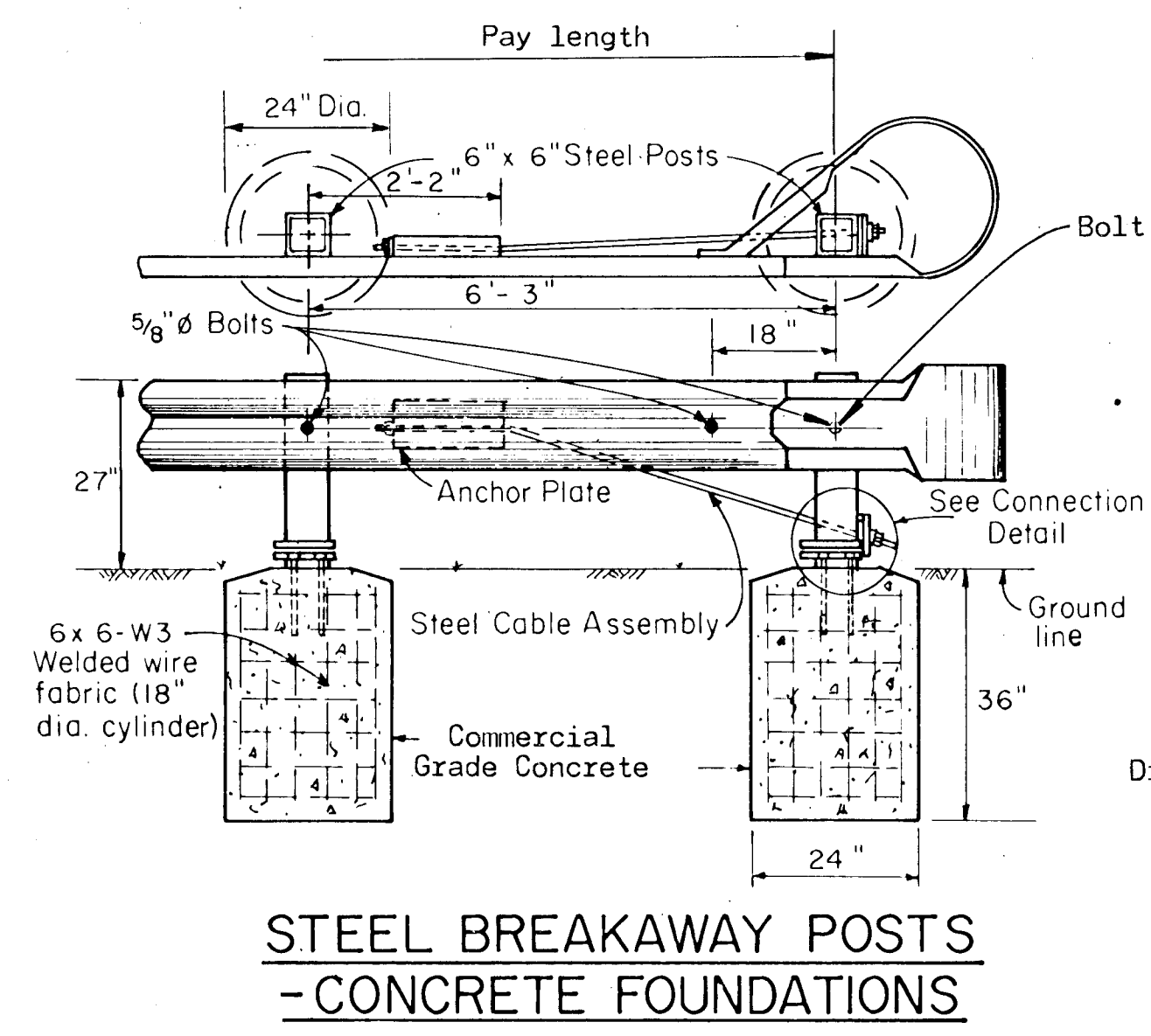
Post	X	Y
1	37.22	4.00
2	31.09	2.79
3	24.92	1.79
4	20.79	1.25
5	16.64	0.80
6	12.49	0.45
7	6.25	0.11
8	0.00	0.00



Note: When steel posts are used, a one-foot section of "W" steel plate guard fence (Plate A) for a backup plate shall be placed behind rail elements on nonsplice posts.

When a rock formation is encountered that in the opinion of the Engineer is sound, the concrete foundation must be keyed a minimum of 6" into the rock and the minimum overall depth of the concrete foundation shall be 24".

Alternate shapes of drainage holes to be constructed in steel BCT Posts (prior to galvanizing) on both sides parallel to guard fence.



CABLE ASSEMBLY (1 ea.)
40,000 lbs. min. breaking strength
Tighten cable to taut tension.

NOTES: See Standard 608.6 & 608.6A for details of guard rail not shown.
All steel parts shall be galvanized after fabrication.
Base plate bolts for steel breakaway posts shall conform to ASTM A-325 and shall be torqued to 155-170 ft-lbs. As an alternate to the nut torqued to 155-170 ft-lbs., the Contractor may use a controlled torque nut system utilizing a torque-off groove concept with double hex configuration and elliptically deformable thread section meeting the approval of the Engineer.
Posts at locations ① & ② shall be the steel breakaway post. Remaining posts in the terminal may be either standard wood posts or steel posts, at the option of the Contractor. If standard wood posts are used, one post shall be located midway between and in lieu of posts ④ & ⑤. For Terminal Type 1, the offset (Y) shall be 1.00 foot.
A two-piece assembly may be substituted for the one-piece nose above.
Steel Post with plate as shown in alternate design maybe used in lieu of concrete footings on terminal barrier breakaway posts.

ALTERNATE DESIGNS TO CONCRETE FOUNDATIONS

1	12-7-79	Added Wood Alt. BCT Post	W.L.H.	L.R.P.
NO.	DATE	REVISIONS	BY	APP'D
KANSAS DEPARTMENT OF TRANSPORTATION				
BARRIER TERMINAL TYPES I & II				
STD. NO. 608.5 D				
DESIGNED	October 11, 1979	SCALE None	APP'D	
DESIGN CK.	DETAILD Bowser	QUANTITIES	TRACED Bowser	
	DETAIL CK. Hecht	QUAN. CK.	TRACE CK. Hecht	