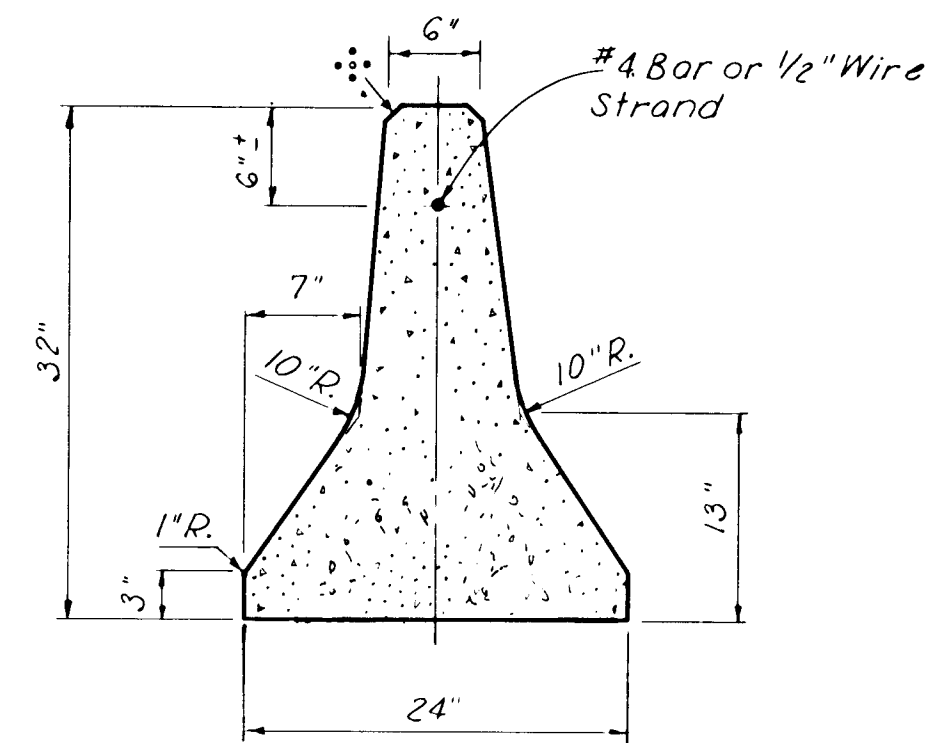
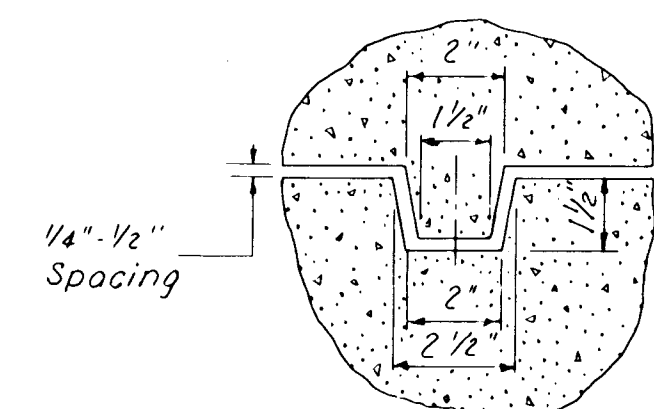


SHOW REGION NO.	STATE	PROJECT NO.	YEAR	SHEET	TOTAL SHEETS
7	KANSAS	54-87-59A2(2)	1980	24	32

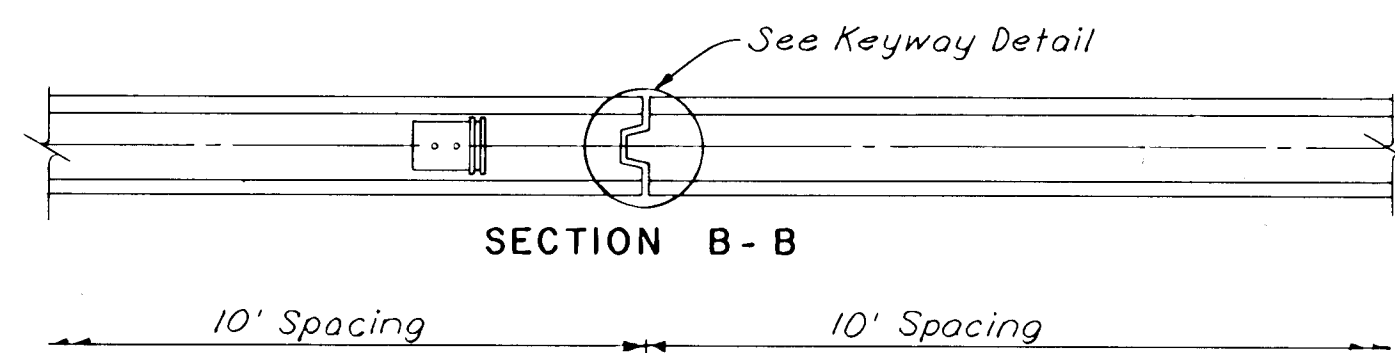
•• 3/4" Chamfer or 2" Radius



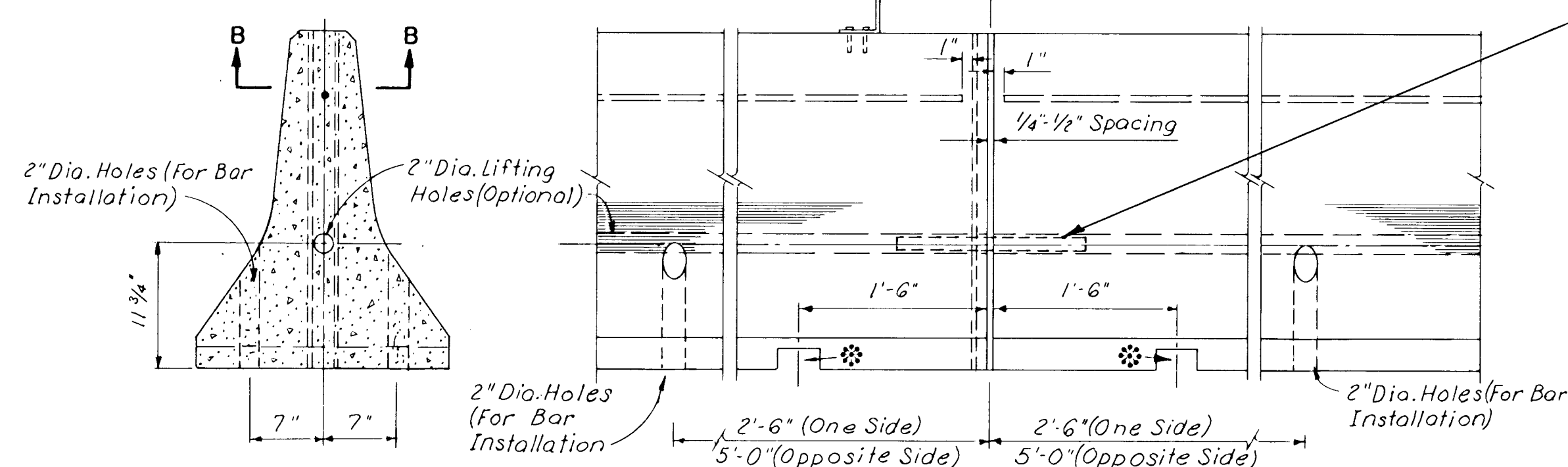
TYPE I



KEYWAY DETAIL
Note: 1/8" tolerance on Keyway dimensions



SECTION B - B

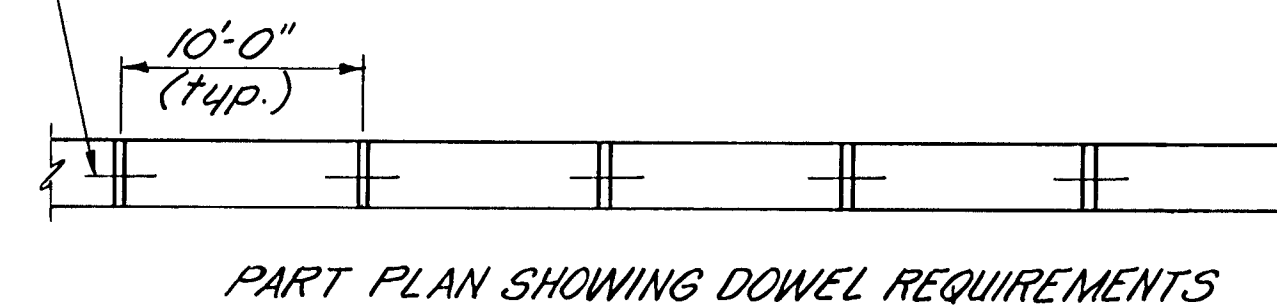


END VIEW

2" x 4" (Nominal) Lifting Slots at each end of Section

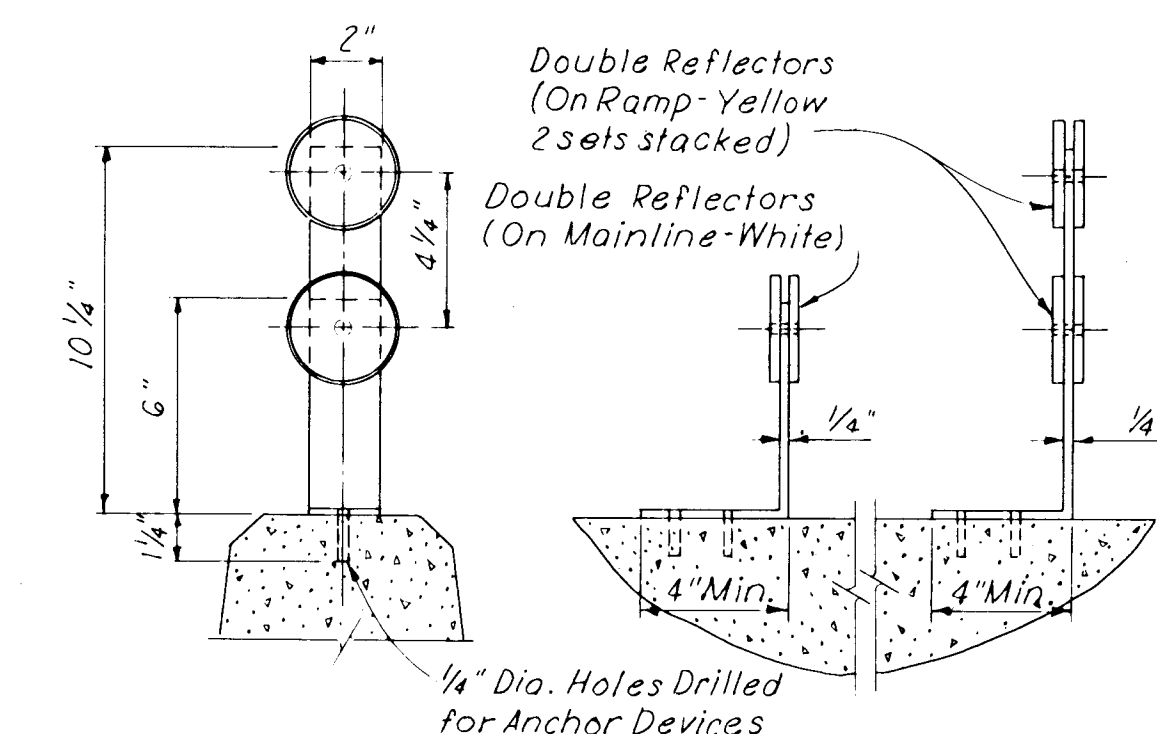
PRECAST

Install bar connector between all units, See Detail 'A'.

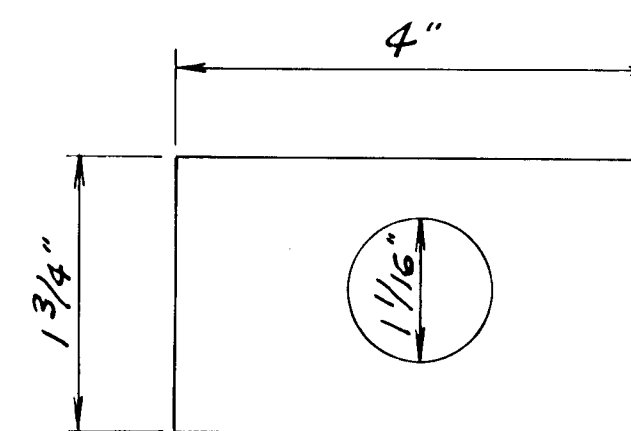


PART PLAN SHOWING DOWEL REQUIREMENTS

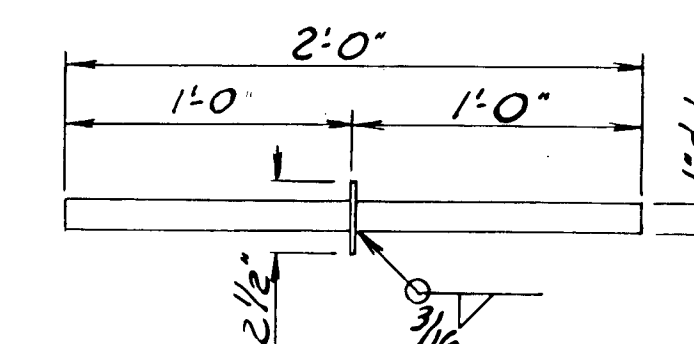
ELEVATIONS



DOUBLE REFLECTOR DETAIL



DETAIL OF WASHER (Optional)



1" ϕ bar and washer shall be A36 steel. Washer not required if lifting hole does not exceed 1 1/2" in length.

(1 Connector per 10' unit)

DETAIL 'A'

GENERAL NOTES

1.) Use Class A Concrete (AC) throughout. All Structural Steel shall be ASTM A-36. Reinforcing Steel may be grade 40 or grade 60.

2.) The section furnished must generally comply with dimensions shown. Requests for minor variations in section geometry and attachments may be submitted for approval.

The female end of the Keyway shall be enlarged near the 2" ϕ hole to accept the washer. Drainage slots shall be constructed where specified in the plans, at inlet locations, or as directed by the Engineer.

3.) Double Reflector Delineators shall be spaced at 20' centers. All materials for supporting delineators shall be aluminum except anchor devices. If anchor device material is other than aluminum, insulation shall be provided between metals to prevent passage of electrical current. Anchor devices shall be of an approved type.

NO.	DATE	REVISIONS	BY	APP'D
1	3-21-77	Per #4 Revised Bid Item	WLH	LRP

KANSAS DEPARTMENT OF TRANSPORTATION
Br. No. 54-87-25-80 Bridge Repair
CONCRETE SAFETY BARRIER
TYPE I

Proj. No. 54-87-59A2(2) Sedgwick Co. 4-21-76
SHEET NO. 24 OF 32 SCALE None APP'D [Signature]
DESIGNED G. Sloop DETAILED G. Sloop QUANTITIES C. TRACED T. ER.
DESIGN CR. DETAIL CR. QUAN. CR. TRACE CR. G. D. S.