

BENCHMARKS:
 BM #1: "□" CL face of catch basin, west side of Lot 4, Block 5, Falcon Falls Addition. Elev. = 1352.47 MSL
 BM #2: "□" south end of the south curb return at Kite and Peregrine, Falcon Falls Addition. Elev. = 1359.85 MSL

Curve #3
 Curve Data Based on Centerline
 Rad. = 100' Delta = 90°00'00" Tangent = 100.00'
 Arc = 157.08' L.C. = 141.42' Def/Ft. = 17.18869 Min.

Station	Arc	FACE CHORD LENGTHS		Defl.	T. Defl.
		8' Lt.	8' Rt.		
3+13.99	-	-	-	0°00'00"	0°00'00"
3+25.00	11.01'	13.76'	8.25'	3°09'15"	3°09'15"
3+50.00	25.00'	31.17'	18.70'	7°09'43"	10°18'58"
3+75.00	25.00'	31.17'	18.70'	7°09'43"	17°28'41"
3+86.46	11.46'	14.32'	8.59'	3°16'59"	20°45'40"
4+00.00	13.54'	16.91'	10.15'	3°52'44"	24°38'24"
4+11.55	11.55'	14.43'	8.66'	3°18'32"	27°56'56"
4+25.00	13.45'	16.80'	10.08'	3°51'11"	31°48'07"
4+36.62	11.62'	14.52'	8.71'	3°19'44"	35°07'51"
4+50.00	13.38'	16.71'	10.03'	3°49'59"	38°57'50"
4+71.07	21.07'	26.29'	15.77'	6°02'10"	45°00'00"

P.V.I.
 Elev. = 1365.20
 49.30' V.C.

P.V.I.
 Elev. = 1364.23
 No V.C.

P.V.I.
 Elev. = 1363.72
 No V.C.

P.V.I.
 Elev. = 1365.20
 34.98' V.C.

P.V.I.
 Elev. = 1363.92
 No V.C.

Curve #4
 Curve Data Based on Centerline
 Rad. = 100' Delta = 47°42'28" Tangent = 44.22'
 Arc = 83.27' L.C. = 80.88' Def/Ft. = 17.18786 Min.

Station	Arc	FACE CHORD LENGTHS		Defl.	T. Defl.
		8' Lt.	8' Rt.		
6+56.48	-	-	-	0°00'00"	0°00'00"
6+75.00	18.52'	13.87'	23.12'	5°18'19"	5°18'19"
7+00.00	25.00'	18.70'	31.17'	7°09'42"	12°28'01"
7+25.00	25.00'	18.70'	31.17'	7°09'42"	19°37'43"
7+39.75	14.75'	11.05'	18.42'	4°13'31"	23°51'14"

WATER VALVE LOCATION TABLE

VALVE NUMBER	BASELINE STATION	OFFSET DISTANCE	OFFSET DIRECTION
V6	2+96.98	23'	Rt.
V7	3+80.22	25'	Rt.

Paving contractor will be responsible to operate all water valves on the project, in the presence of the inspector, to ensure accessibility to the valves, and that all valves are left in the "ON" position when the project is completed.

NOTE: ROLL TYPE CURB & GUTTER TO BE CONSTRUCTED ON THE PAVEMENT SHOWN ON THIS SHEET. TOP OF CURB ELEVATIONS ARE GIVEN FOR FULL HEIGHT CURB.

Baughman ENGINEERING | SURVEYING | PLANNING | LANDSCAPE ARCHITECTURE

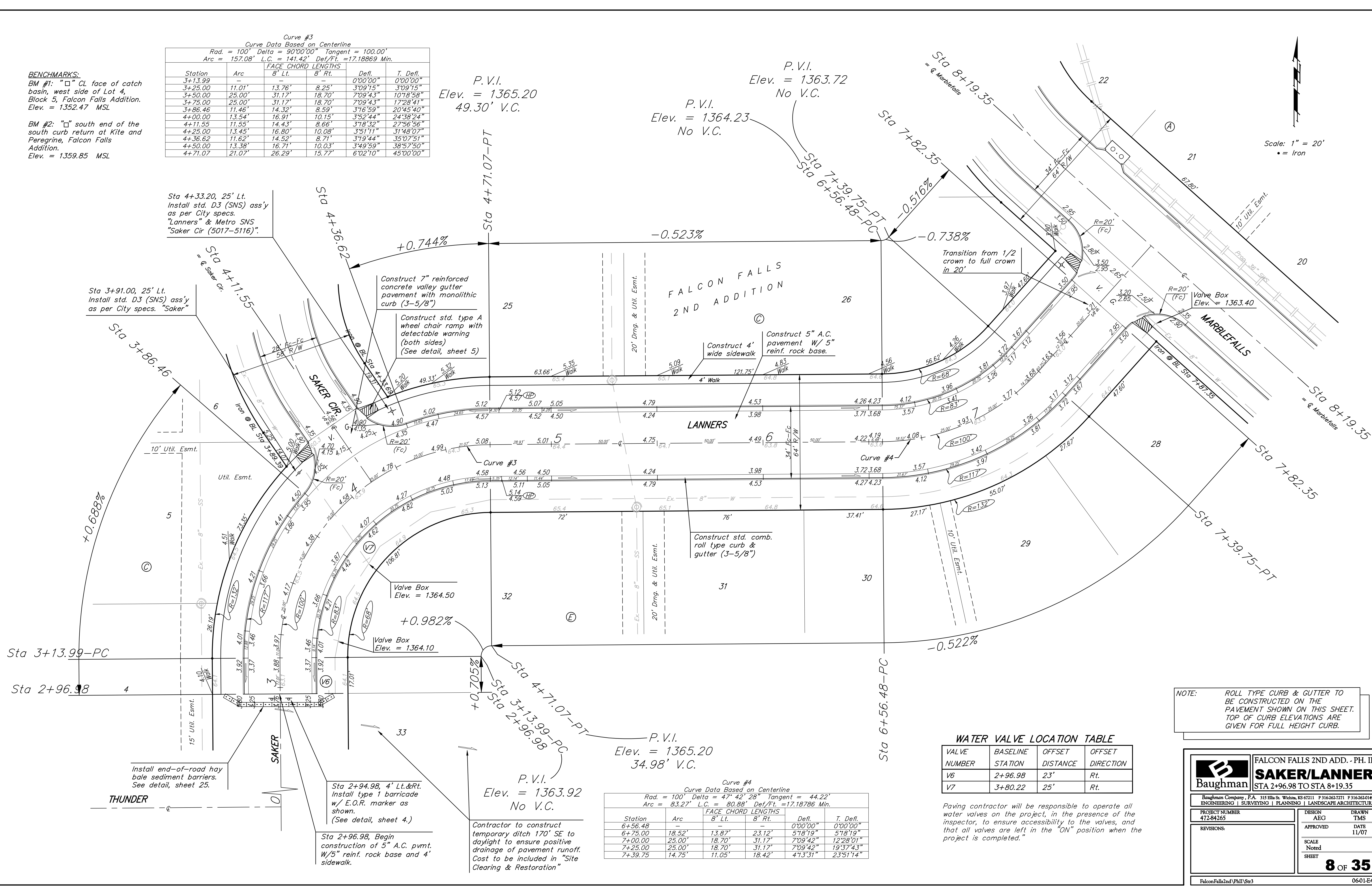
FALCON FALLS 2ND ADD. - PH. II
SAKER/LANNERS
 STA 2+96.98 TO STA 8+19.35

PROJECT NUMBER: 41284265
 DESIGN: AEG
 DRAWN: TMS

REVISIONS:
 APPROVED: DATE: 11/07

SCALE: Noted
 SHEET: **8 OF 35**

Falcon Falls 2nd Ph II S3 0601-E463



Scale: 1" = 20'
 • = Iron

