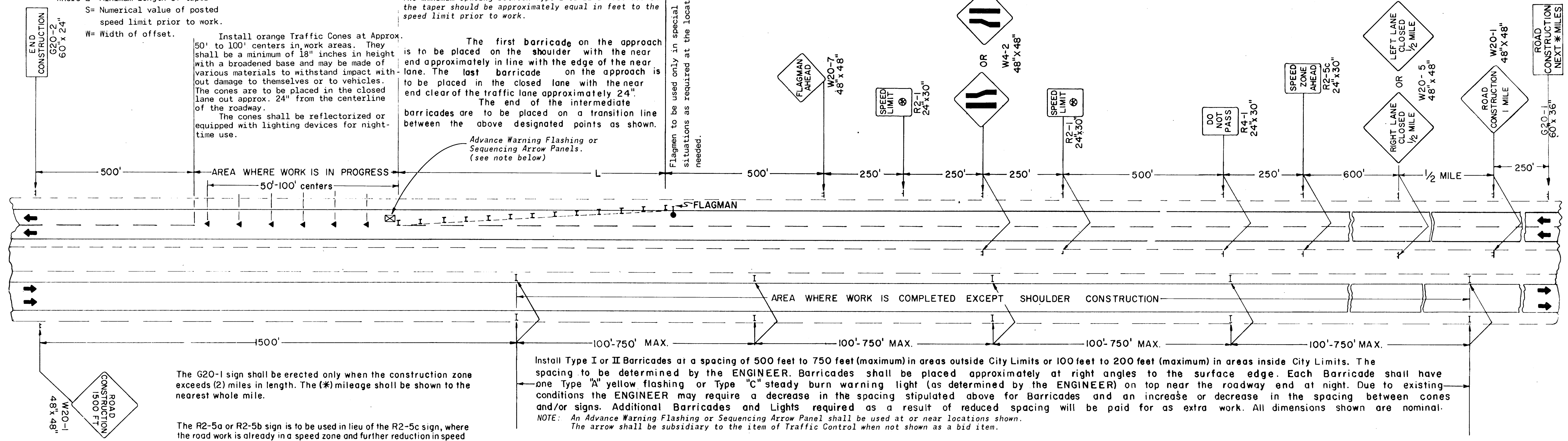


TRAFFIC CONTROL SIGNING FOR TRAFFIC MOVEMENT THROUGH CONSTRUCTION ON FOUR-LANE HIGHWAY

TAPER FORMULA:
 $L = SxW$ for speeds of 45 MPH or more.
 $L = \frac{WS^2}{60}$ for speeds of 40 MPH or less.
 Where L = Minimum length of taper
 S = Numerical value of posted speed limit prior to work.
 W = Width of offset.

Install Type I or II Barricades at right angles to the center of the roadway. Each barricade shall have one yellow steady burning warning light on top at night. The maximum spacing between Type I or II Barricades in the taper should be approximately equal in feet to the speed limit prior to work.

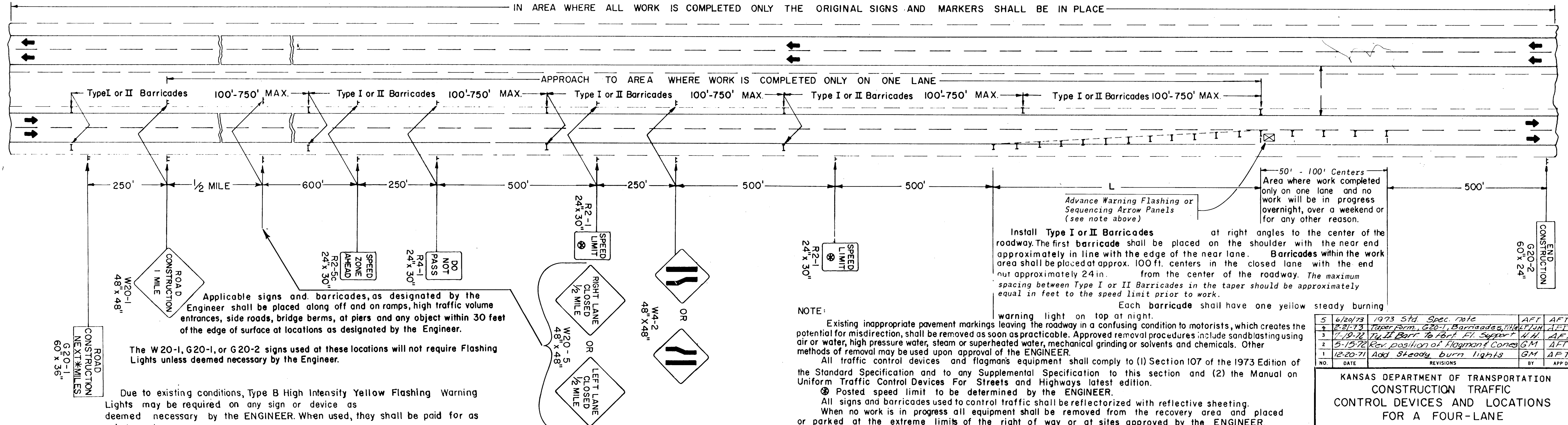


The G20-1 sign shall be erected only when the construction zone exceeds (2) miles in length. The (*) mileage shall be shown to the nearest whole mile.

The R2-5a or R2-5b sign is to be used in lieu of the R2-5c sign, where the road work is already in a speed zone and further reduction in speed is desired.

Install Type I or II Barricades at a spacing of 500 feet to 750 feet (maximum) in areas outside City Limits or 100 feet to 200 feet (maximum) in areas inside City Limits. The spacing to be determined by the ENGINEER. Barricades shall be placed approximately at right angles to the surface edge. Each Barricade shall have one Type "A" yellow flashing or Type "C" steady burn warning light (as determined by the ENGINEER) on top near the roadway end at night. Due to existing conditions the ENGINEER may require a decrease in the spacing stipulated above for Barricades and an increase or decrease in the spacing between cones and/or signs. Additional Barricades and Lights required as a result of reduced spacing will be paid for as extra work. All dimensions shown are nominal.

NOTE: An Advance Warning Flashing or Sequencing Arrow Panel shall be used at or near locations shown. The arrow shall be subsidiary to the item of Traffic Control when not shown as a bid item.



Applicable signs and barricades, as designated by the Engineer shall be placed along off and on ramps, high traffic volume entrances, side roads, bridge berms, at piers and any object within 30 feet of the edge of surface at locations as designated by the Engineer.

The W20-1, G20-1, or G20-2 signs used at these locations will not require Flashing Lights unless deemed necessary by the Engineer.

Due to existing conditions, Type B High Intensity Yellow Flashing Warning Lights may be required on any sign or device as deemed necessary by the ENGINEER. When used, they shall be paid for as extra work.

ReflectORIZED Drums may be substituted for Type II Barricades or Traffic Cones. Yellow Lights placed on drums shall be the type as shown by Traffic Control Device Standard Number 752.

NOTE: Existing inappropriate pavement markings leaving the roadway in a confusing condition to motorists, which creates the potential for misdirection, shall be removed as soon as practicable. Approved removal procedures include sandblasting using air or water, high pressure water, steam or superheated water, mechanical grinding or solvents and chemicals. Other methods of removal may be used upon approval of the ENGINEER.

All traffic control devices and flagman's equipment shall comply to (1) Section 107 of the 1973 Edition of the Standard Specification and to any Supplemental Specification to this section and (2) the Manual on Uniform Traffic Control Devices For Streets and Highways latest edition.

Posted speed limit to be determined by the ENGINEER.

All signs and barricades used to control traffic shall be reflectORIZED with reflective sheeting.

When no work is in progress all equipment shall be removed from the recovery area and placed or parked at the extreme limits of the right of way or at sites approved by the ENGINEER.

Temporary traffic control signs when not in use shall be either covered with an opaque weatherproof material or removed from recovery area as approved by the ENGINEER.

Lights placed on advance warning signs shall be Type B High Intensity with a 7" minimum diameter lens, regulated to flash 55 to 75 times per minute. The flash duration shall not be less than 8% of time.

NO.	DATE	REVISIONS	BY	APP'D
1	12-20-71	Add Steady burn lights	GM	AFT
2	5-15-72	Rev. position of Flagman's Cones	GM	AFT
3	7-19-72	Rev. H. Barr. to Port. Fl. Support	W.H.	AFT
4	2-21-73	Taper Form, G20-1, Barricades, etc.	W.H.	AFT
5	6/20/73	1973 Std. Spec. note	AFT	AFT
6	5/10/76	Removal of "Orange Flags"	W.H.	AFT
7	6/21/76	NOTE - Pavt. Marking Removal	W.H.	AFT
8	2/2/77	Sign spacing, Lights, notes	AFT	AFT
9	1/5/78	Signs & Barricades needed near ramp	RR	AFT
10	4-19-78	Cones, Lights, Fl. Arrow Dev. (Notes)	W	AFT
11	11/6/79	Notes, Dim, Lts., Chan. Dev., Signs	R.W.	AFT

NO.	DATE	REVISIONS	BY	APP'D
1	12-20-71	Add Steady burn lights	GM	AFT
2	5-15-72	Rev. position of Flagman's Cones	GM	AFT
3	7-19-72	Rev. H. Barr. to Port. Fl. Support	W.H.	AFT
4	2-21-73	Taper Form, G20-1, Barricades, etc.	W.H.	AFT
5	6/20/73	1973 Std. Spec. note	AFT	AFT
6	5/10/76	Removal of "Orange Flags"	W.H.	AFT
7	6/21/76	NOTE - Pavt. Marking Removal	W.H.	AFT
8	2/2/77	Sign spacing, Lights, notes	AFT	AFT
9	1/5/78	Signs & Barricades needed near ramp	RR	AFT
10	4-19-78	Cones, Lights, Fl. Arrow Dev. (Notes)	W	AFT
11	11/6/79	Notes, Dim, Lts., Chan. Dev., Signs	R.W.	AFT

KANSAS DEPARTMENT OF TRANSPORTATION
 CONSTRUCTION TRAFFIC
 CONTROL DEVICES AND LOCATIONS
 FOR A FOUR-LANE
 HIGHWAY

STD. 744.1

SHEET NO. 30 OF 32
 DESIGNED AFT
 DESIGN CK GM

SCALE
 QUANTITIES
 DETAILED GM
 DETAIL CK AFT

APP'D
 QUANTITIES
 QUAN CK

TRACED
 TRACED CK