

Install hay bale sediment barrier per detail, sheet 21.

Maintain 634 L.F. silt fence per detail, sheet 23.

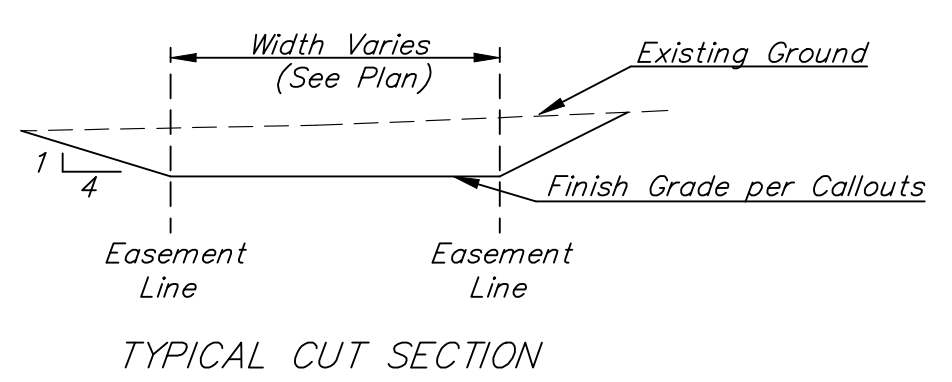
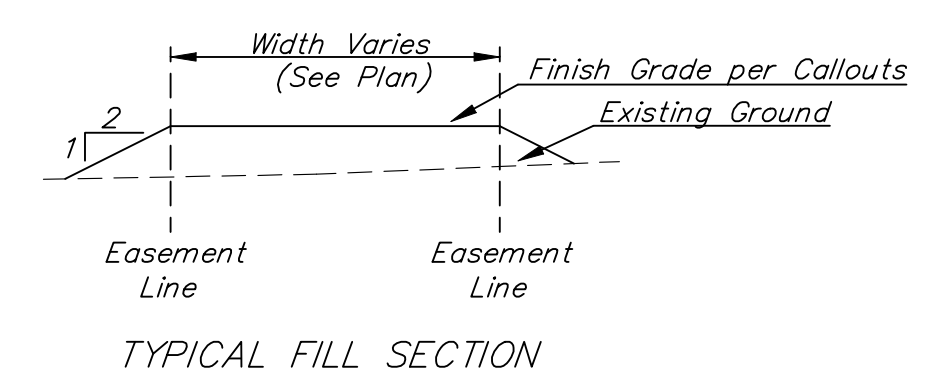
Fill & Grade existing ditch to match plan elevations.

Install hay bale sediment barrier per detail, sheet 21.

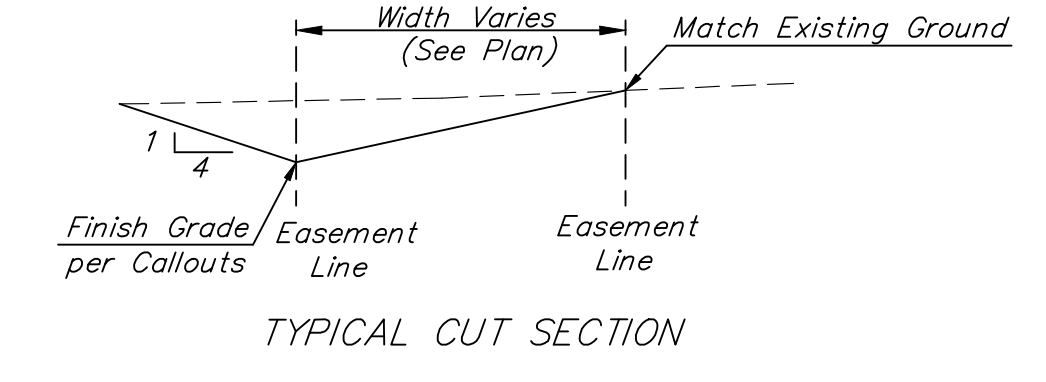
**EROSION CONTROL PLAN LEGEND**  
(Installation Details Found in the SMP2 Plan)

- DROP INLET PROTECTION
- CURB INLET PROTECTION
- SILT FENCING
- CUT-OFF TRENCH
- BACK OF CURB PROTECTION
- EROSION CONTROL MAT

NO SCALE



SECTION A-A



SECTION B-B

= Easements To Be Graded

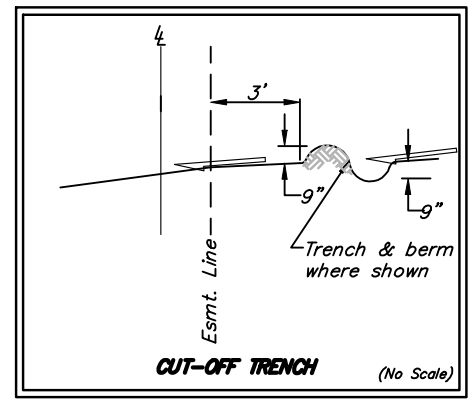
The contractor shall grade the easements as shown to the elevations given on the easement grading plan. All costs for grading shall be incidental to the Easement Grading Bid Item.

The contractor shall 'straight' grade the easements between the elevations given. Where a callout designates 'Match', the contractor will grade to the existing ground elevation.

Install curb inlet sediment protection per detail, sheet 24.

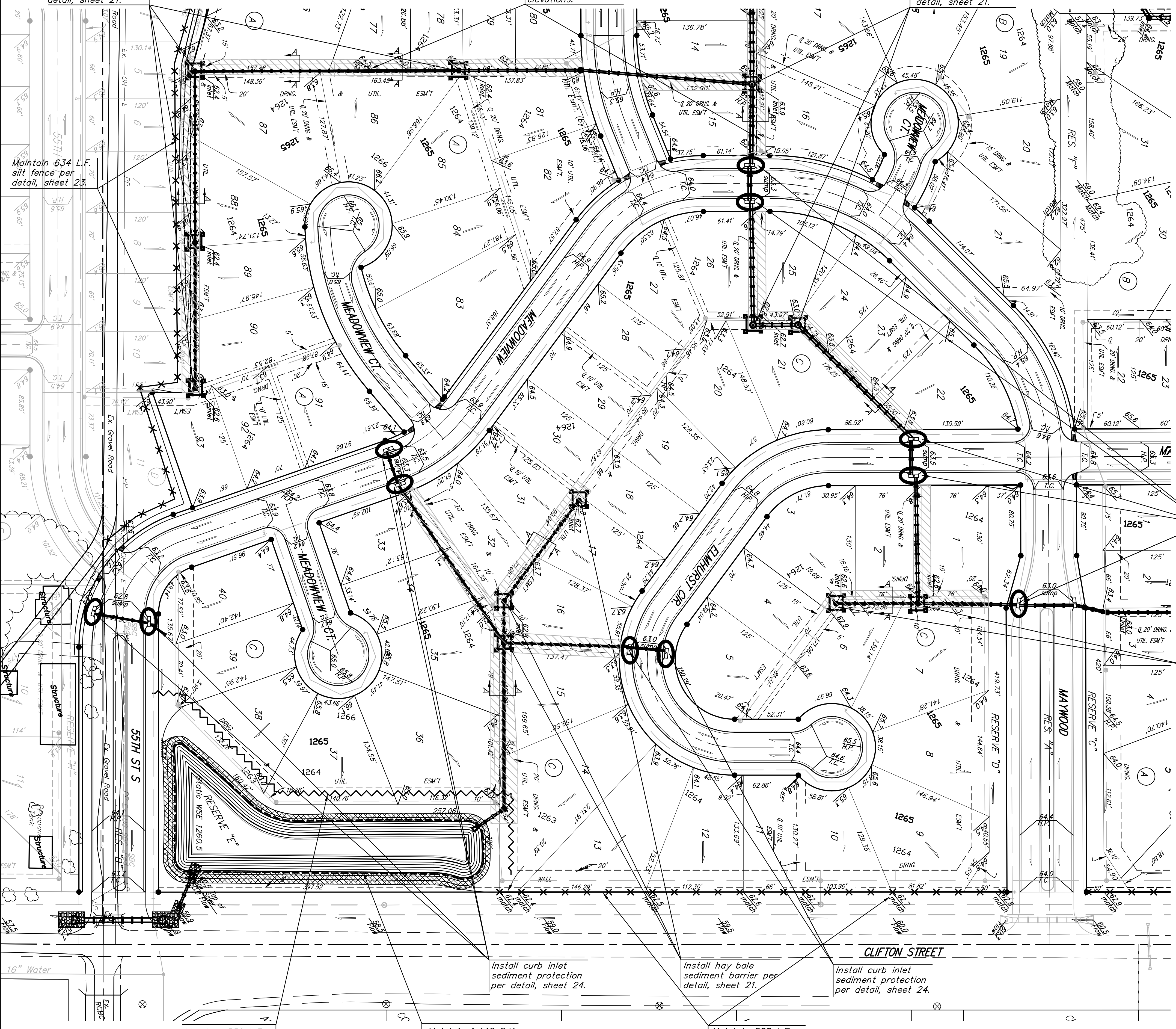
Install hay bale sediment barrier per detail, sheet 21.

All easements have been graded prior to construction with the mass grading plan, however, all easements shall be fine graded with this project after storm sewer & street construction has been completed. All cost associated with the fine grading shall be included in the lump sum bid item "Easement Grading".



Maintain one construction entrance onto existing paved roadway per detail, sheet 24.

1265 Proposed Grade



Maintain 550 L.F. cut-off trench per detail, this sheet.

Maintain 1,440 S.Y. Curlex II, or approved equal.

Maintain 588 L.F. silt fence per detail, sheet 23.

**Baughman** MEADOWLAKE BEACH ADD. - PH. I  
**EROSION CONTROL / ESMT GRADING PLAN**  
WICHITA, KANSAS

Baughman Company, P.A. 315 Ellis St. Wichita, KS 67211 P 316-262-7271 F 316-262-0149  
ENGINEERING | SURVEYING | PLANNING | LANDSCAPE ARCHITECTURE

PROJECT NUMBER 468-84446	DESIGN ATD	DRAWN TMS
REVISIONS:	APPROVED	DATE 11/07
	SCALE Noted	
	SHEET	

20 OF 26

MeadowlakeBeach/SweCplan