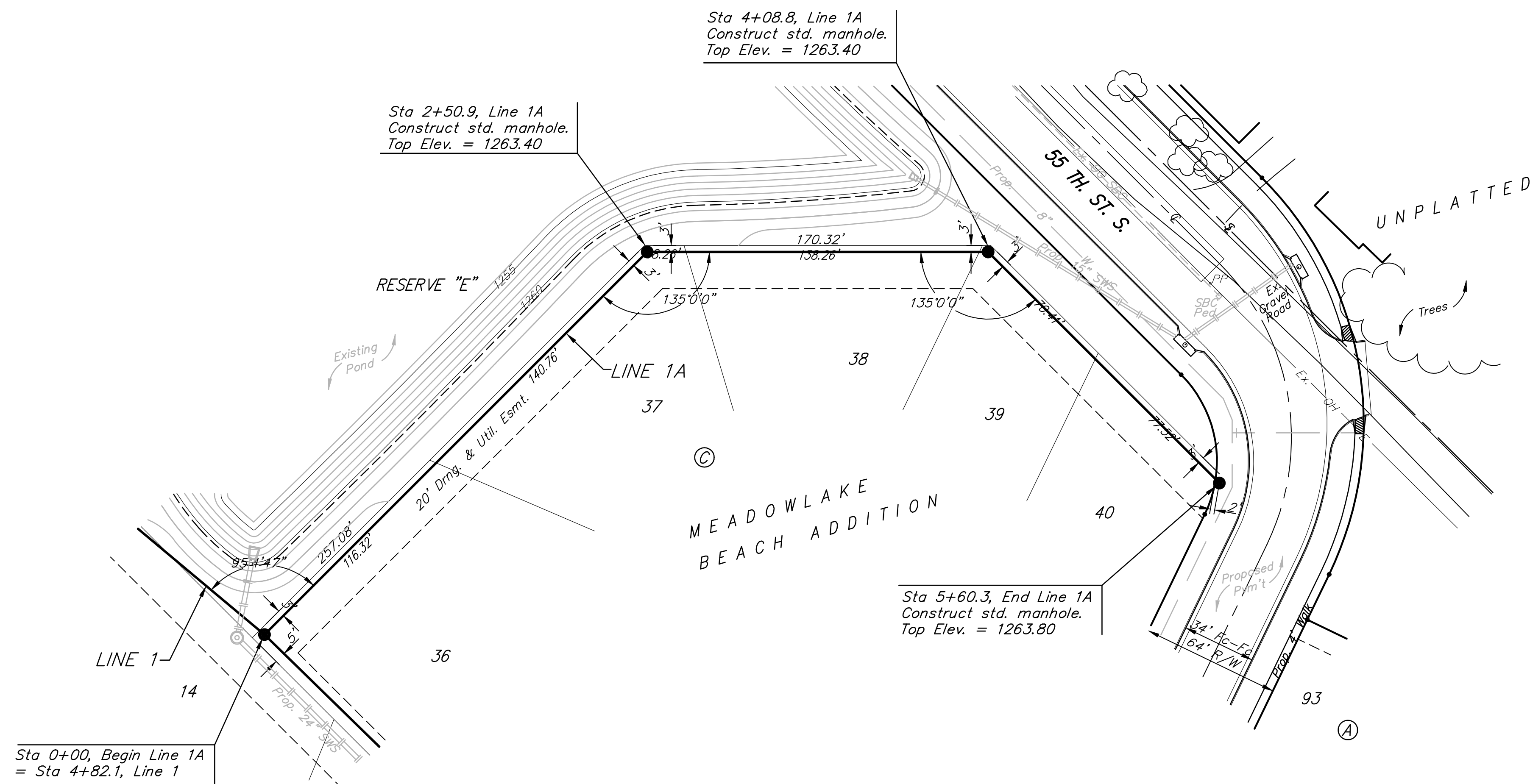


BM #1 - City of Wichita  
Benchmark Disc, SE Corner of  
Clifton and 55th Street South,  
Southwest corner of RCB, on top  
of hubguard at the West end.  
ELEV. = 1263.29 NGVD29

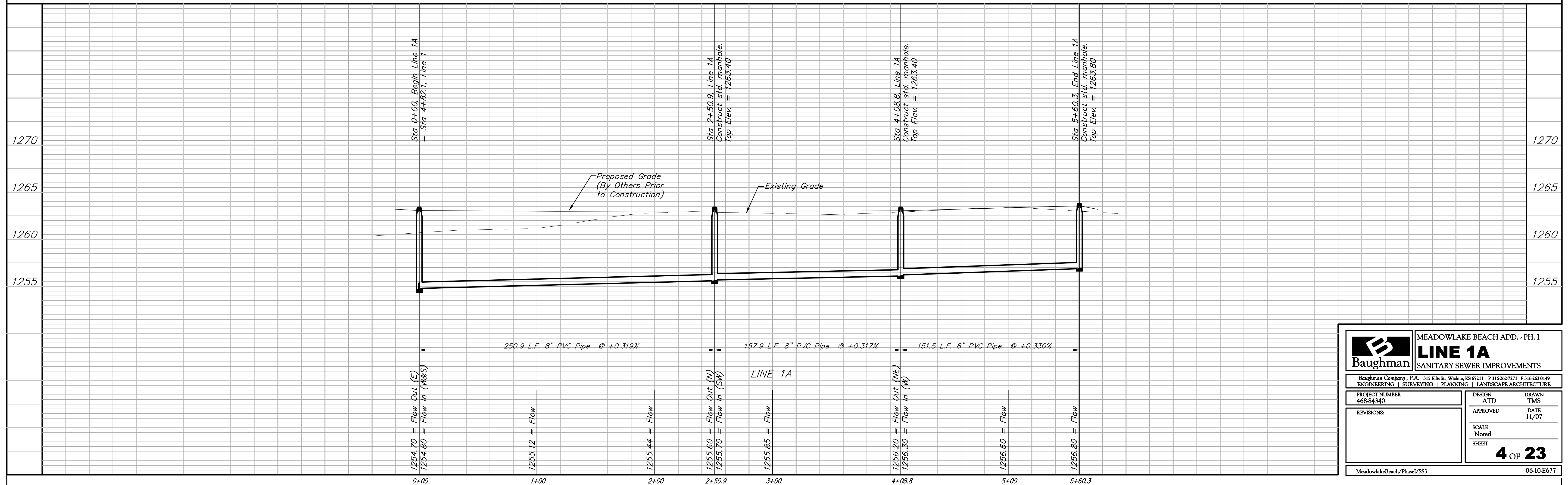
BM #2 - "□" Cut on wall footing  
located 29' North of the South  
end of wall, at the Southeast  
corner of Lot 7 Block A,  
Meadowlake Beach Addition,  
Sedgwick County, Kansas.  
ELEV. = 1266.82 NGVD29

BM #3 - "□" Cut Top of Curb,  
West side South end of Concrete  
street North west of Northeast  
corner of Meadowlake Beach  
Addition, Sedgwick County, Kansas.  
ELEV. = 1262.86 NGVD29

BM #4 - "□" Cut Top of Curb,  
East return on East side of  
Concrete street North of the  
Northwest Corner of Meadowlake  
Beach Addition, Sedgwick County,  
Kansas.  
ELEV. = 1262.95 NGVD29



Scale: 1" = 40' Horizontal  
1" = 5' Vertical  
• = Iron



<b>Baughman</b>		MEADOWLAKE BEACH ADD. - PH. I	
		<b>LINE 1A</b>	
		SANITARY SEWER IMPROVEMENTS	
Baughman Company, P.A. 315 Ellis St. Wichita, KS 67211 P 316-262-7271 F 316-262-0149 ENGINEERING   SURVEYING   PLANNING   LANDSCAPE ARCHITECTURE			
PROJECT NUMBER 468-84340	DESIGN ATD	DRAWN TMS	
REVISIONS:	APPROVED	DATE 11/07	
		SCALE Noted	
		SHEET	<b>4 OF 23</b>
MeadowlakeBeach/Phase/SS3			06-10-E677