

BM #1 - City of Wichita
 Benchmark Disc, SE Corner of
 Clifton and 55th Street South,
 Southwest corner of RCB, on top
 of hubguard at the West end.
 ELEV. = 1263.29 NGVD29

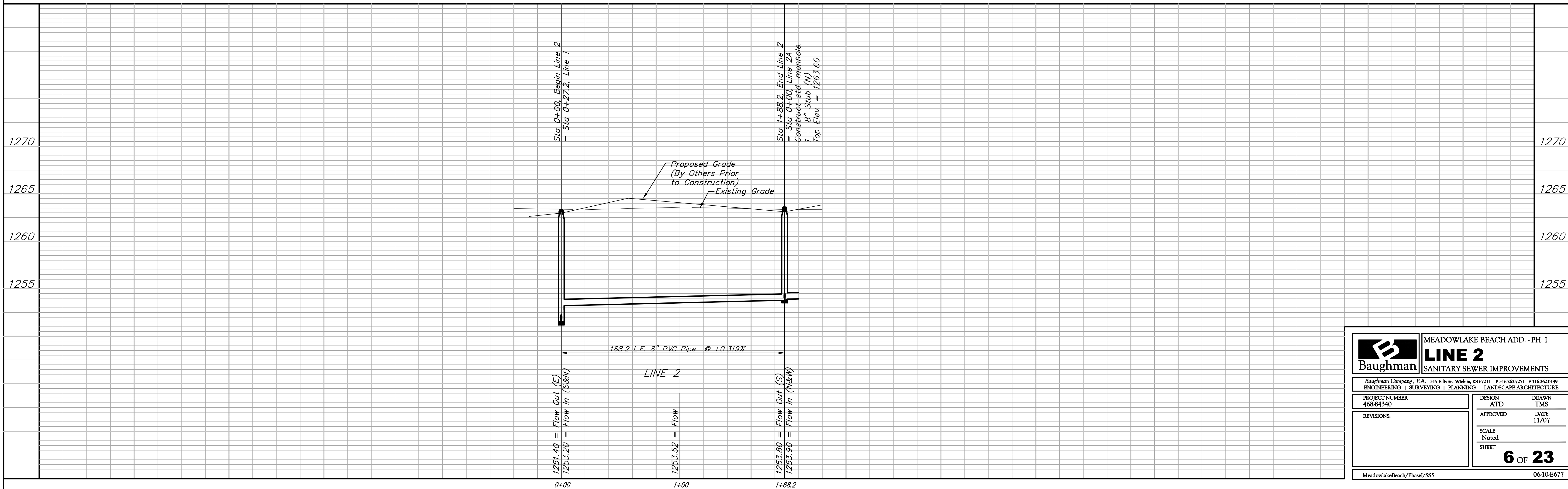
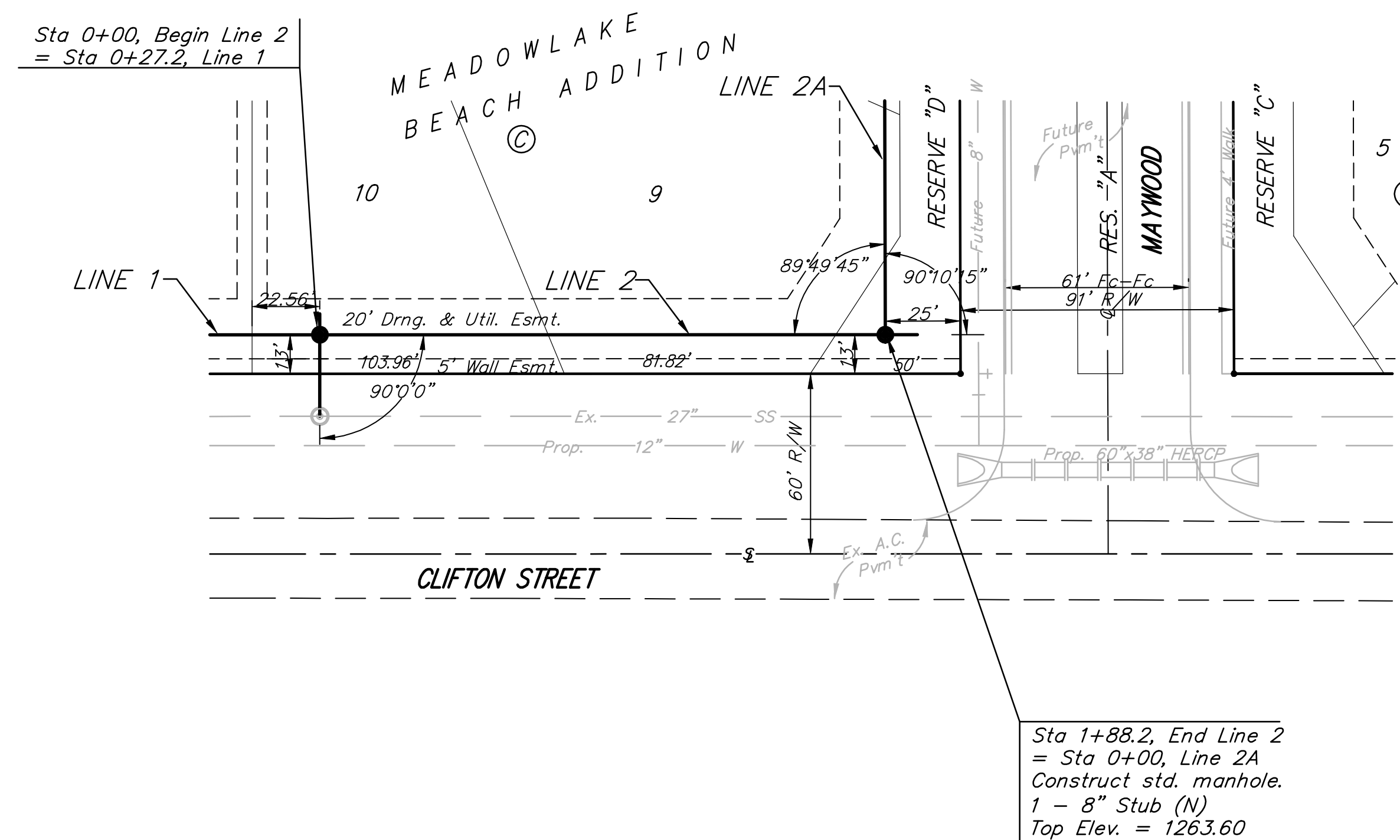
BM #2 - "□" Cut on wall footing
 located 29' North of the South
 end of wall, at the Southeast
 corner of Lot 7 Block A,
 Meadowlake Beach Addition,
 Sedgwick County, Kansas.
 ELEV. = 1266.82 NGVD29

BM #3 - "□" Cut Top of Curb,
 West side South end of Concrete
 street North west of Northeast
 corner of Meadowlake Beach
 Addition, Sedgwick County, Kansas.
 ELEV. = 1262.86 NGVD29

BM #4 - "□" Cut Top of Curb,
 East return on East side of
 Concrete street North of the
 Northwest Corner of Meadowlake
 Beach Addition, Sedgwick County,
 Kansas.
 ELEV. = 1262.95 NGVD29



Scale: 1" = 40' Horizontal
 1" = 5' Vertical
 • = Iron



		MEADOWLAKE BEACH ADD. - PH. I	
		LINE 2	
PROJECT NUMBER 468-84340		DESIGN ATD	DRAWN TMS
APPROVED		DATE 11/07	
REVISIONS:		SCALE Noted	
		SHEET	6 OF 23
MeadowlakeBeach/Phase/SS		06-10-E677	