

# STORM WATER DRAIN #316 to serve **JOHNSON COMMERCIAL CENTRE ADD.**

CITY OF WICHITA, KANSAS

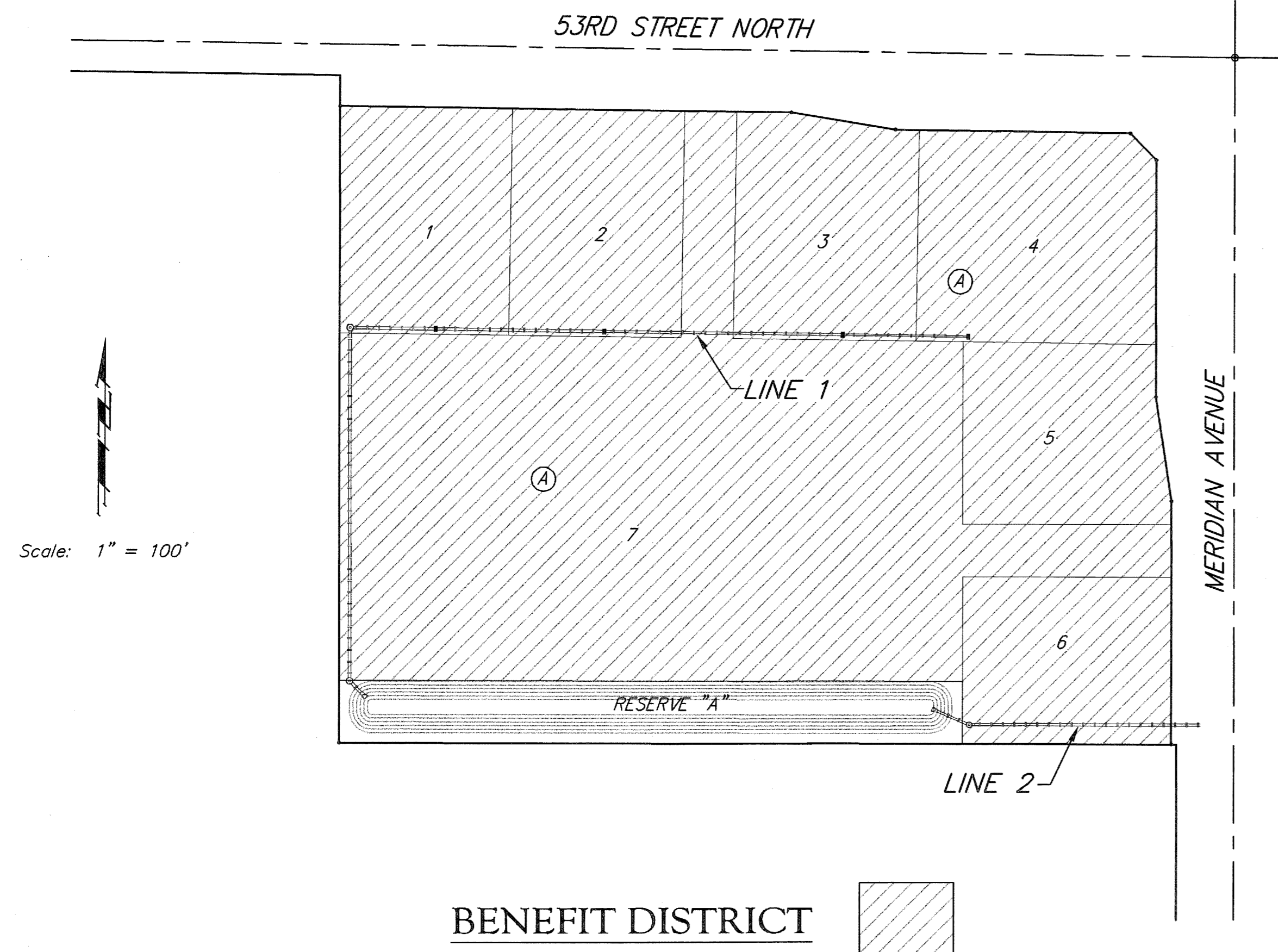
James L. Armour, P.E. City Engineer

Project Number

468-84305

O.C.A. Number

751449



## SHEET INDEX

Title Sheet	1
Mass Grading Plan	2-3
Pond Plan	4
Storm Sewer Line 1	5-6
Storm Sewer Line 2	7
Shallow Manhole Detail	8
Ring & Cover Detail	9
Drop Inlet Detail	10
Erosion Control BMP Details	11-14
Coordinate Sheet	15
Copy of Plat	16

## BENCHMARK

COW Benchmark at the Intersection of Meridian and 53rd St. N., NE Corner, Top of Concrete Headwall  
44' North of Centerline  
37' East of Centerline  
50.90' NE of Section Corner  
9' NE of and Radial to Curb  
26' East of Section Line  
Elev. = 1331.37 NGVD29

## GENERAL NOTES:

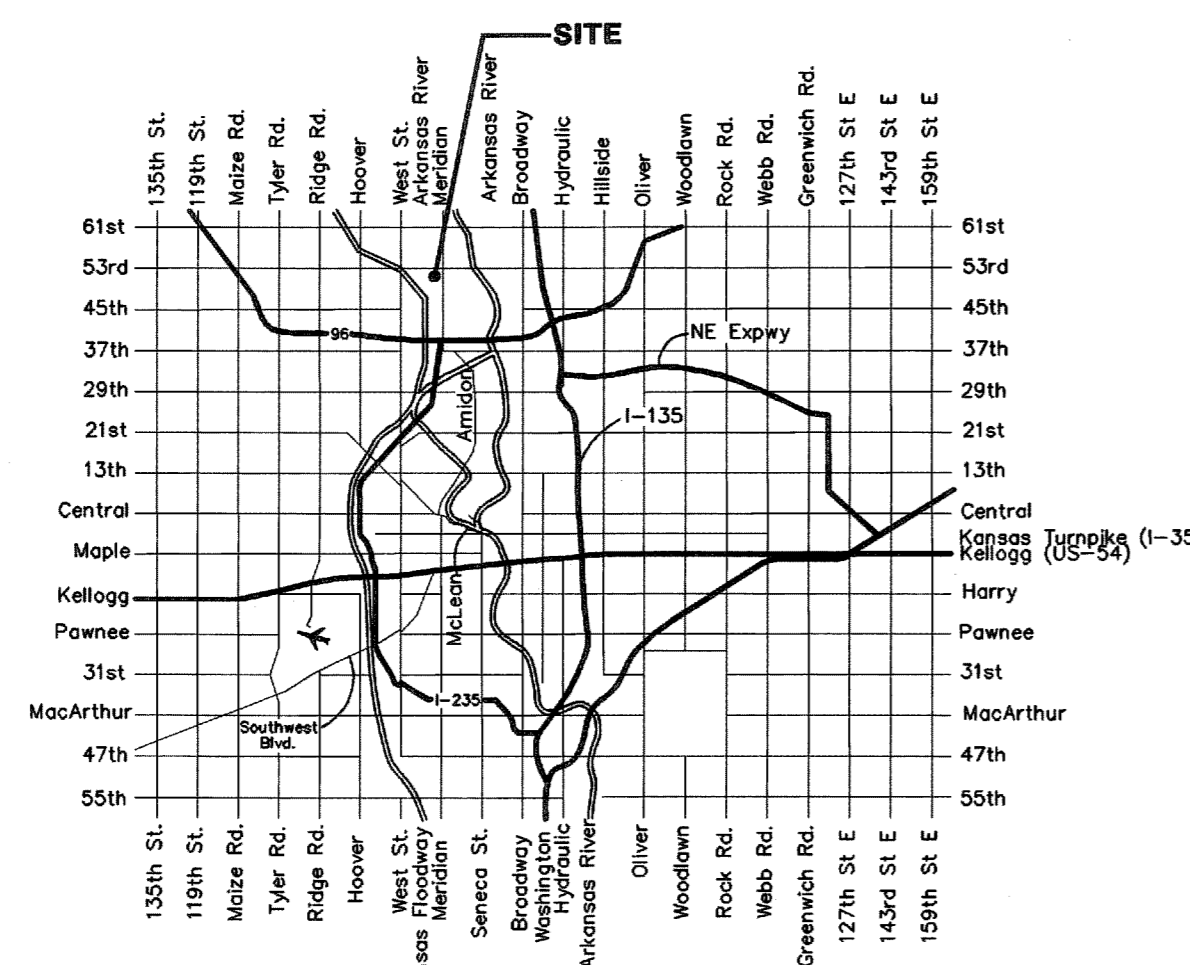
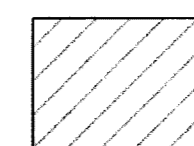
- Contractor will be required to provide notice to utility companies a minimum of forty-eight (48) hours prior to any excavation, as follows:  
  

Kansas One-Call	687-2470
-----------------	----------

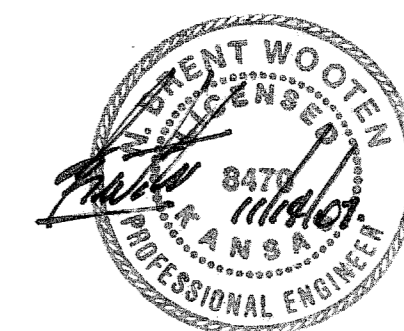
The Contractor must notify the following in case of an emergency:

Cox Communications	262-4270
Kansas Gas Service	1-888-482-4950
Westar Energy	383-8650
Aquila Energy	1-800-303-0357
AT&T	268-2245
City of Wichita Water Dept.	268-4563
City of Wichita Sewer Maint.	268-4024
City of Wichita Storm Sewer Maint.	268-4090
City of Wichita Traffic Maint.	268-4034
Conoco Pipeline Co.	1-800-231-2551
Southern Star Pipeline Co.	529-6600
Phillips Pipeline Co.	1-800-766-8230
- Utility service lines, poles, valve boxes, meters, and etcetera are to be adjusted as necessary by others prior to construction unless the plans specifically call for their adjustment by the Contractor or unless the plans specifically identify a utility to be adjusted by its owner during construction. Existing utilities and their location, as shown on the plans, represent the best information obtainable for design. The Contractor will be required to work around existing utilities within the right-of-way which do not conflict with proposed construction. The contractor shall coordinate all crossings and construction near existing utilities with the owner of that utility. (Electric - Westar Energy, CATV - Cox Communications, Gas - Kansas Gas Service, and Phone - AT&T)
- Rubble from the removal of miscellaneous structures and excess excavation which is to be wasted shall be disposed of on sites to be provided by the Contractor. These sites shall be approved by the Engineer as to suitability, appearance and site location. Locations, in the opinion of the Engineer, that will leave an unsightly appearance will not be approved. All disposal sites must be approved by the Kansas Department of Health and Environment. Material either stockpiled or disposed of in a flood plain would require a Kansas State Board of Agriculture permit. Any material dumped in waters of the United States or wetlands is subject to U.S. Corps. of Engineers permitting regulations. Any material buried or stockpiled beyond approved construction limits would require additional archaeological investigations unless buried in a previously approved borrow location.
- Unless specifically noted on plans, trees and shrubs which are in direct conflict with proposed new construction shall be removed by the Contractor ONLY with the Developer or Baughman Company approval. Trees and shrubs which are not in direct conflict with proposed new construction shall be saved and protected from damage. Any tree removal/trimming shall be incidental to "Site Clearing & Restoration".
- The Contractor shall give all property owners and/or tenants of developed property abutting the construction of this project a minimum of ten (10) days notice prior to start of construction.
- The Contractor shall be responsible for preserving property irons. The Contractor will be required to re-establish any property irons which are damaged or destroyed by his construction operations. Such irons shall be re-established by a licensed land surveyor in accordance with state laws.
- All existing and proposed erosion control measures including silt fencing, erosion control mat, straw bales, inlet barriers, and const. entrance shall be maintained throughout construction by the contractor and until project is accepted by the City of Wichita. The on-site engineer shall complete weekly reports on the status of erosion control measures. The contractor shall be required to comply with maintenance and/or replacement of erosion control measures as determined by the on-site engineer until project is accepted by City of Wichita.
- At conclusion of construction, an as-built survey will be completed by the engineer. The contractor will be required to finish and smooth grade all locations as necessary that are not within  $\pm 0.2'$  of plan grade. The contractor shall include all costs associated with the regrading and/or remobilization in the bid item "Mass Grading".

## BENEFIT DISTRICT



## VICINITY MAP



NOVEMBER 2007



Baughman Company, P.A. 315 Ellis St. Wichita, KS 67211 P 316-262-7271 F 316-262-0149  
ENGINEERING | SURVEYING | PLANNING | LANDSCAPE ARCHITECTURE