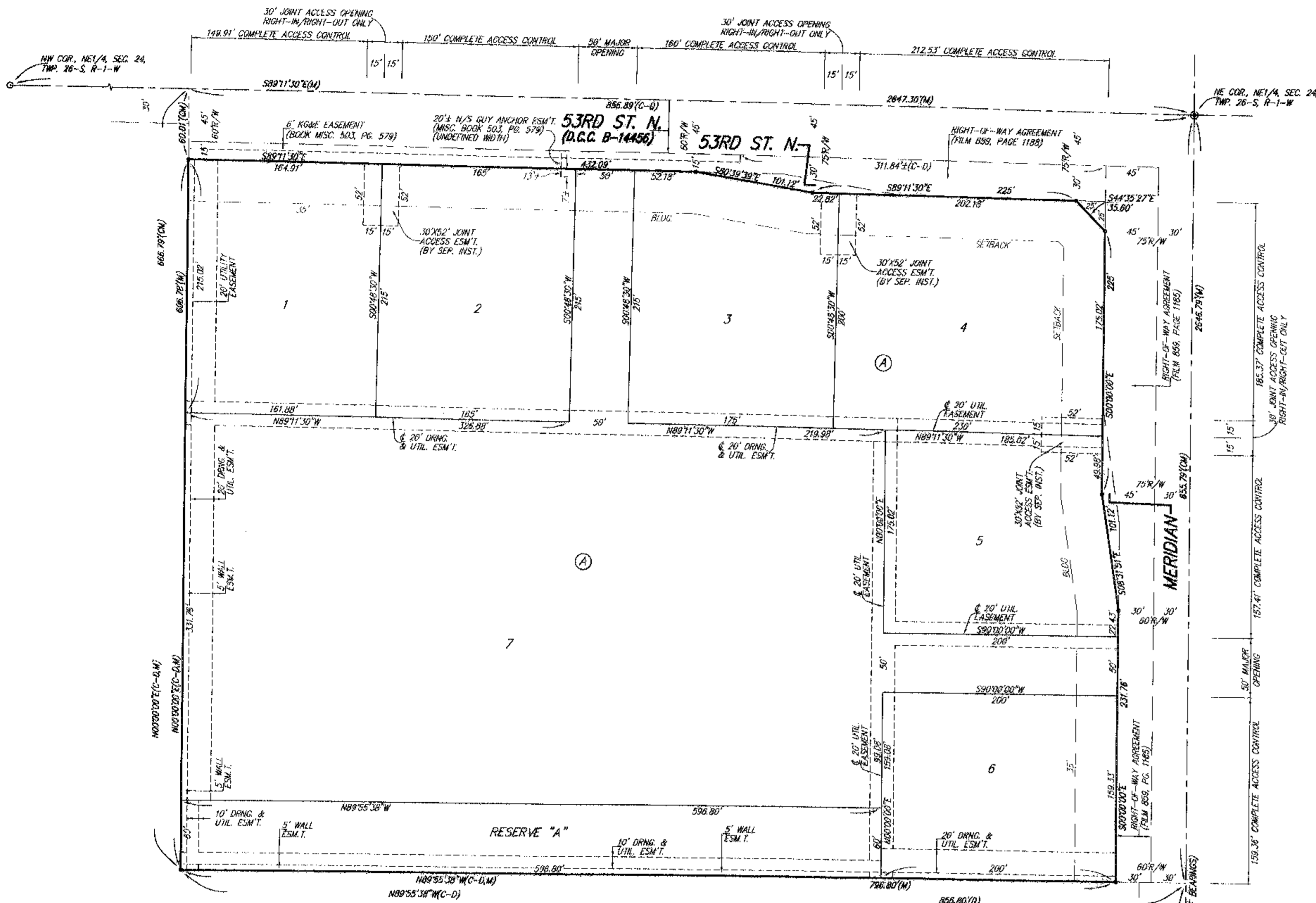
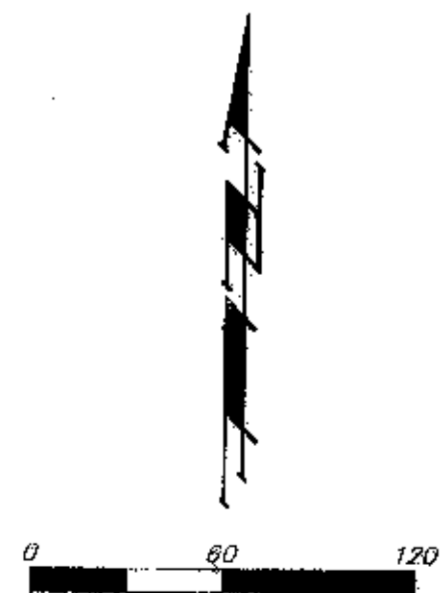


JOHNSON COMMERCIAL CENTRE AN ADDITION TO WICHITA, SEDGWICK COUNTY, KANSAS



LOT	BLOCK	ELEVATION
6, 7	A	1332.0



- = #4 REBAR W/ "DAUGHMAN" CAP (SET)
- ⊙ = #5 REBAR (FOUND)
- ⊚ = 1/2" IRON (FOUND)
- = #5 REBAR W/ "MERC" CAP IN TRIMBLE (FOUND)

- (M) = MEASURED
- (D) = DESCRIBED
- (CM) = CALCULATED PER MEASURED INFO
- (PS) = INFO. PER PREVIOUS SURVEY
- (C-D) = CALCULATED PER DESCRIBED INFO
- (PRO) = PROTRACTED ANGLE
- (CPA) = CALCULATED PER PROTRACTED ANGLE

NOTE: ADDITIONAL BUILDING SETBACKS AND OTHER REQUIREMENTS ARE PER THE JOHNSON COMMERCIAL CENTRE COMMUNITY UNIT PLAN (CUP 2005-46, UP-280).

NOTE: A DRAINAGE PLAN HAS BEEN DEVELOPED FOR THIS SUBDIVISION AND IS ON FILE WITH THE CITY OF WICHITA, KANSAS. DRAINAGE INTENT SHALL REMAIN AS DEPICTED ON AS MODIFIED WITH THE APPROVAL OF THE CITY ENGINEER OF THE CITY OF WICHITA, KANSAS. NO OBSTRUCTIONS WHICH IMPEDS THE FLOW OF THIS DRAINAGE PLAN SHALL BE ALLOWED.

State of Kansas) SS We, Baughman Company, P.A., Surveyors in
Sedgwick County) and state do hereby certify that we have surveyed and
platted "JOHNSON COMMERCIAL CENTRE", an Addition to Wichita, Sedgwick
County, Kansas and that the accompanying plat is a true and correct
exhibit of the property surveyed, described as follows: The east 856.8
feet of the NE 1/4 of Sec. 24, Twp. 26-S, R-1-W of the 6th P.M.,
Sedgwick County, Kansas, except the south 1991 feet thereof, and except
the north 45 feet thereof taken for highway in Condemnation Case
B-14456, all being subject to road rights-of-way of record.
Existing public easements and dedications
being vacated by virtue of K.S.A. 12-512(b).
Baughman Company, P.A.

Michael G. Conrey, Surveyor
Michael G. Conrey

This plat of "JOHNSON COMMERCIAL CENTRE",
an Addition to Wichita, Sedgwick County, Kansas has been submitted to
and approved by the Wichita-Sedgwick County Metropolitan Area Planning
Commission, Wichita, Kansas.
Dated this 21st day of February, 2007.
Wichita-Sedgwick County Metropolitan Area Planning Commission

Daniel A. Downer, Chair
Harold L. Warner, Jr.
John L. Schlegel, Secretary
John L. Schlegel

This plat approved and all dedications
shown hereon accepted by the City Council of the City of Wichita,
Kansas, this 6th day of Feb, 07
Carlos Mayans, Mayor
Karen Sublett, City Clerk
Karen Sublett

Know all men by these presents that we,
the undersigned, have caused the land in the surveyors certificate to be
plotted into Lots, a Block, Streets, and a Reserve, to be known as
"JOHNSON COMMERCIAL CENTRE", an Addition to Wichita, Sedgwick County,
Kansas. The utility easements are hereby granted as indicated for the
construction and maintenance of all public utilities. The drainage and
utility easements are hereby granted as indicated for drainage purposes
and for the construction and maintenance of all public utilities. The wall
easements are hereby granted as indicated for the construction and
maintenance of a private screening wall and utility main lines and service
lines shall be allowed to cross these easements. The streets are hereby
dedicated to and for the use of the public. Reserve "A" is hereby
reserved for open space, landscaping, drainage purposes, berms, lakes,
screening walls as confined to easements, and utilities as confined to
easements. Reserve "A" shall be owned and maintained by the lot owners
association for the addition. Access controls shall be as depicted on the
face of the plat and are hereby granted to the City of Wichita, Kansas.
The Minimum Building Pad Elevations for the lowest opening to the
structures shall be as indicated on the face of the plat.

South Greenwich, LLC,
a Kansas limited liability company

Thomas D. Jacob, Member
Thomas D. Jacob

Reviewed in accordance with K.S.A. 58-2015
on this 4th day of Feb, 2007
Tricia L. Robello, L.S. #1246
Deputy County Surveyor
Sedgwick County, Kansas

Entered on transfer record this 15th day
of February, 2007
Dan Brace, County Clerk
Dan Brace

State of Kansas) SS The foregoing instrument acknowledged before
Sedgwick County) me, this 21st day of February, 2007, by Thomas D. Jacob,
Member of South Greenwich, LLC, a Kansas limited liability company, on
behalf of the limited liability company.

Judith M. Terhune, Notary Public
Judith M. Terhune

State of Kansas) SS This is to certify that this plat has been
Sedgwick County) filed for record in the office of the Register of Deeds, this 15th day
of February, 2007, at 3:26:41 P.M. and is duly recorded.

Bill Meek, Register of Deeds
Bill Meek

Tonya Buckingham, Deputy
Tonya Buckingham

Sedgwick County
Register of Deeds Bill Meek
DOC # FLM-PG: 28858101
Receipt #: 1547958
Page Recorded: 1
Author: [Signature]
Date Recorded: 2/15/2007 3:26:41 PM
Recording Fee: \$23.00

Baughman Company, P.A.
115 1/2 S.W. WELLS, KANSAS
BAUGHMAN SURVEYING & ENGINEERING
P.O. BOX 10000, WICHITA, KS 67208-0000
TEL: 316.261.1111 FAX: 316.261.1112