

SCALE:  
1" = 20' HORIZONTAL  
1" = 5' VERTICAL

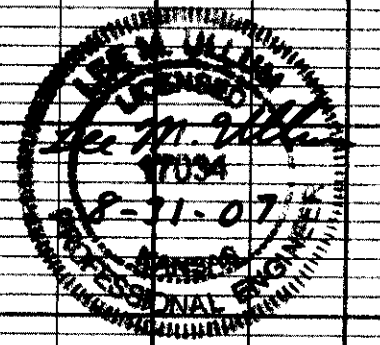
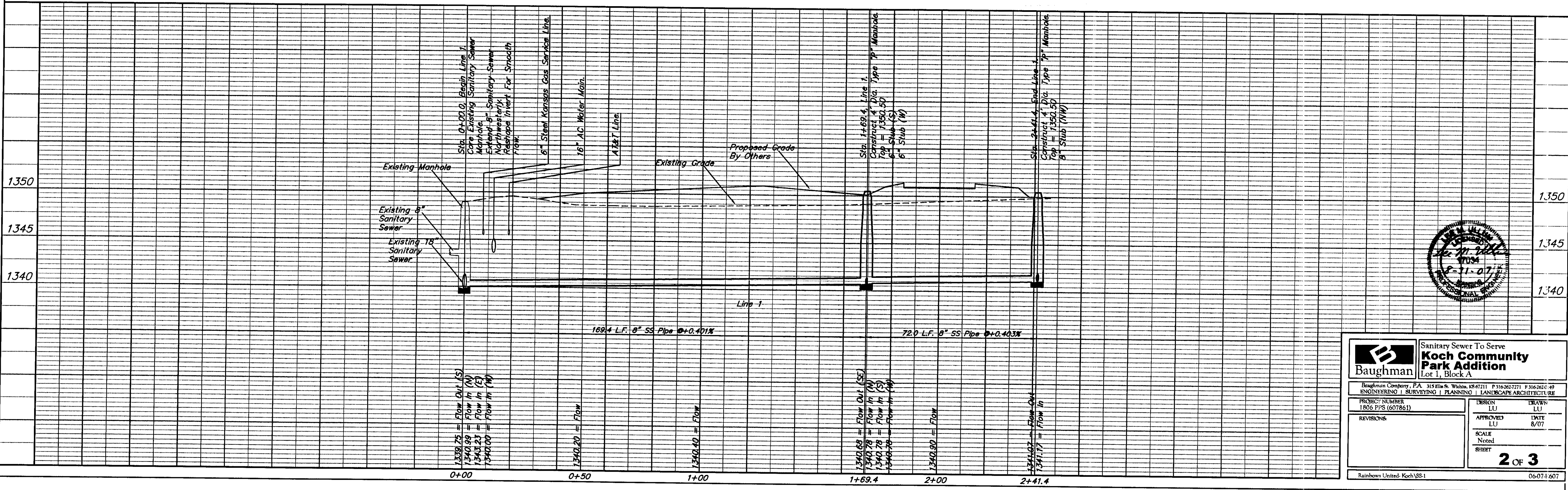
**NOTE:**  
PRESERVATION OF TREES IS VERY IMPORTANT TO OWNER. CONTRACTOR TO LIMIT TREE REMOVAL TO ONLY THOSE TREES IN DIRECT CONFLICT WITH SANITARY SEWER CONSTRUCTION. REMOVE AS FEW TREES AS POSSIBLE. ALL OTHER TREES TO BE PROTECTED FROM DAMAGE.

**BENCHMARK**

Sq. Cut on Top of Curb on Oliver at NE Corner of Subject Parcel (Approx. 430 Ft. North of CL of Norwood Lane)  
Elev. = 1349.64 (NGVD 29)

Contractor Shall Follow All Applicable Best Management Practices (BMP) For Erosion Control.

Contractor To Use Extreme Caution When Excavating Near Utility Lines. Contractor To Hand Dig To Expose All Utility Lines Prior To Construction. Verify Depth To Determine Conflict If Any.



<b>Baughman</b>		Sanitary Sewer To Serve <b>Koch Community Park Addition</b> Lot 1, Block A	
Baughman Company, P.A. 315 Elm St., Wichita, KS 67211 P 316-262-7771 F 316-262-49			
ENGINEERING   SURVEYING   PLANNING   LANDSCAPE ARCHITECTURE			
PROJECT NUMBER 1806 PPS (607861)	DESIGN LU	DATE 8/07	DRAWN LU
REVISIONS	APPROVED LU	SCALE Noted	SHEET
			<b>2 OF 3</b>
Rainbow United-Koch\SS-1			06-07-1-607