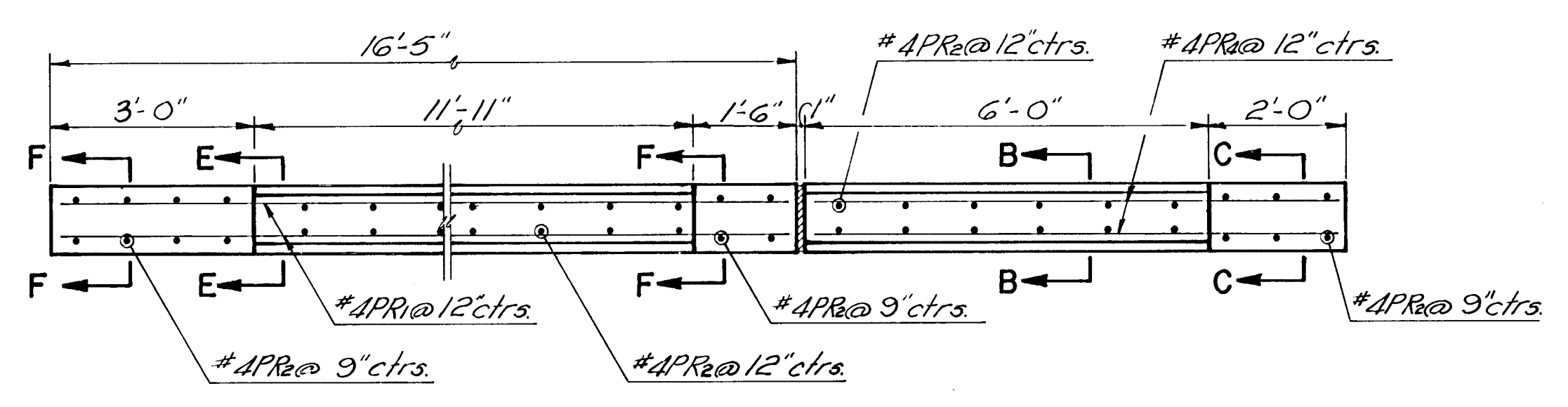
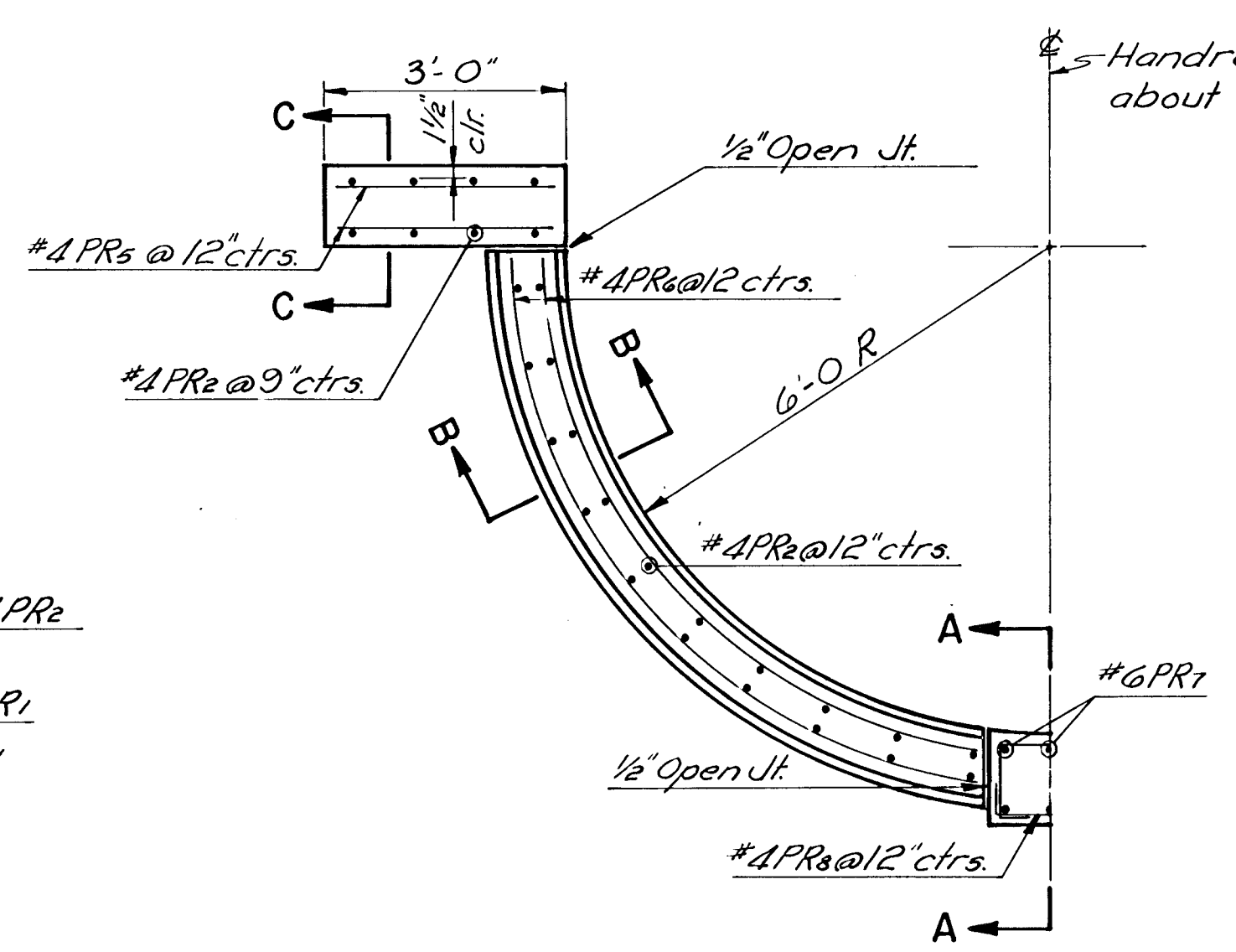


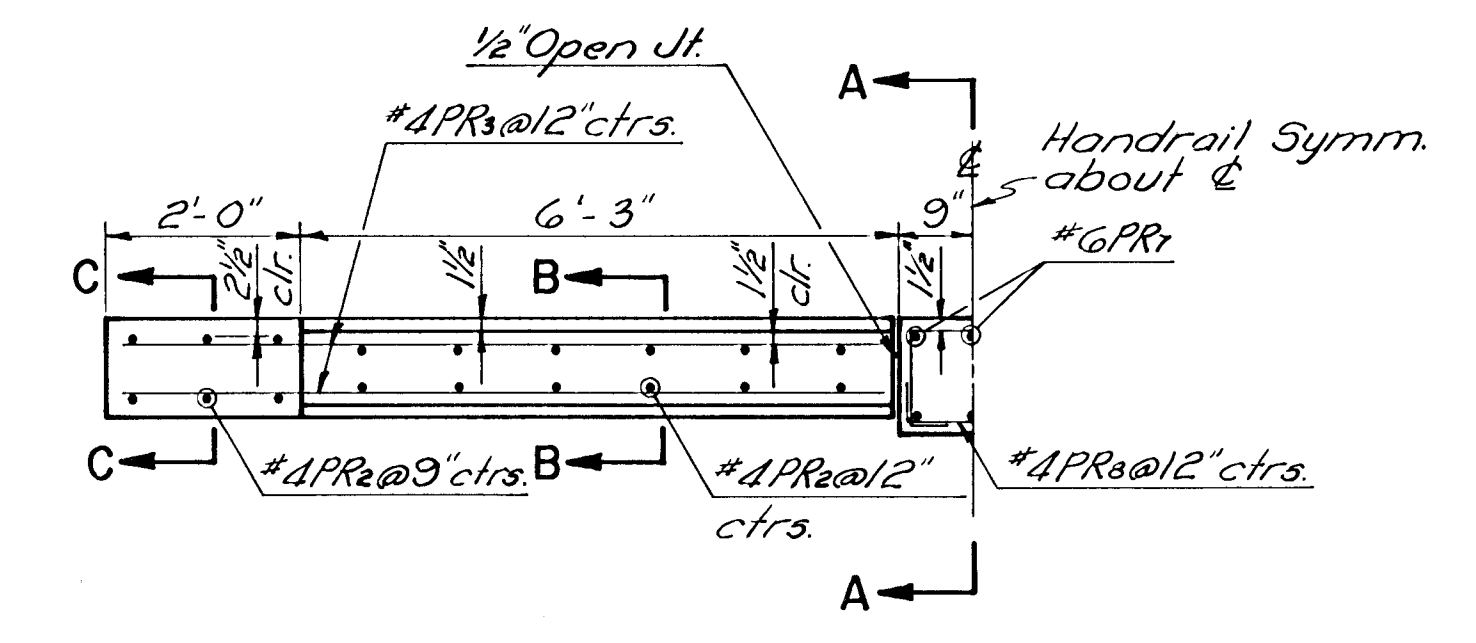
**ELEVATION**



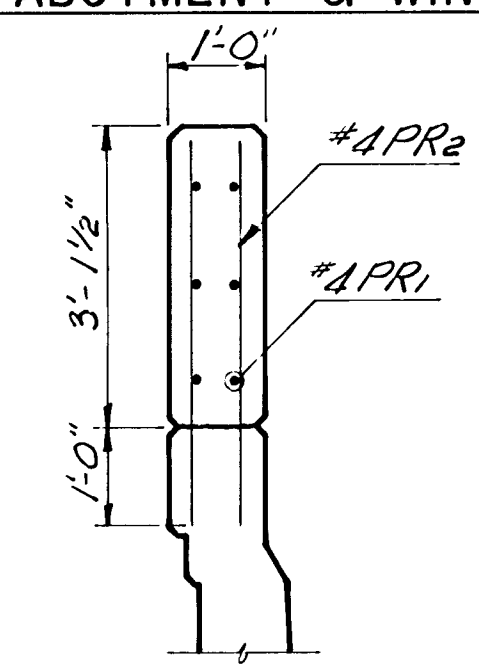
**CONCRETE HANDRAIL AT ABUTMENT & WINGWALL**



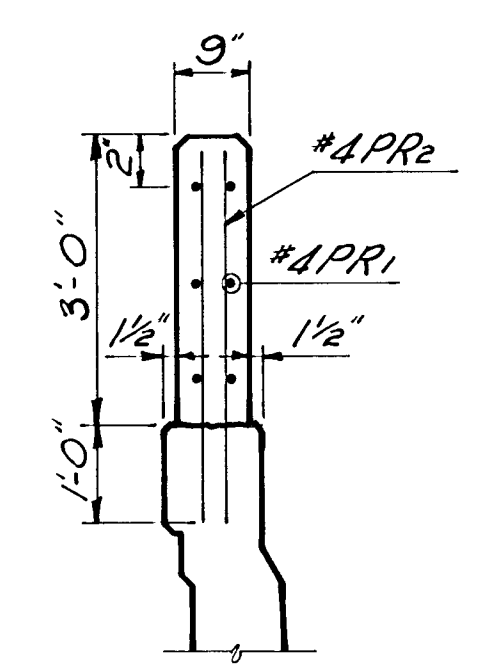
**CONCRETE HANDRAIL AT PLATFORM**



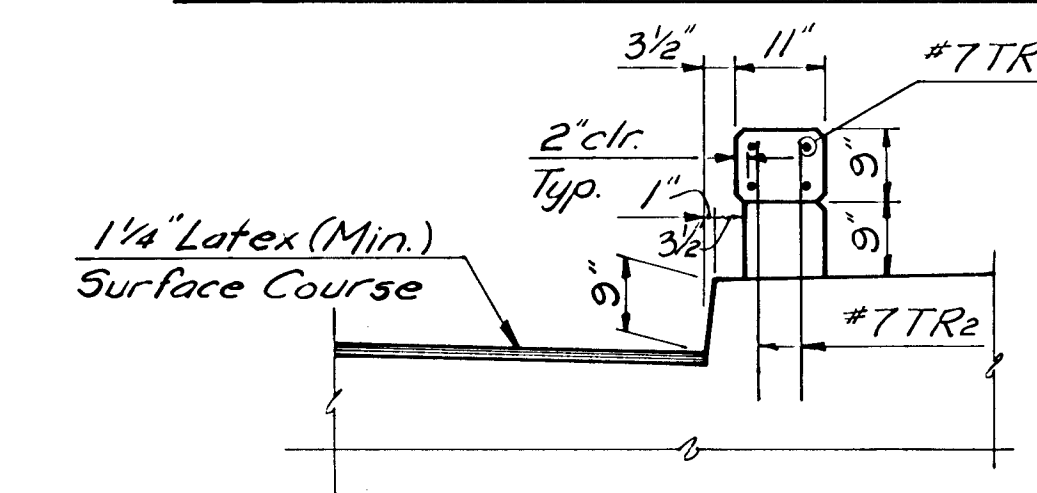
**CONCRETE HANDRAIL OVER PIER**



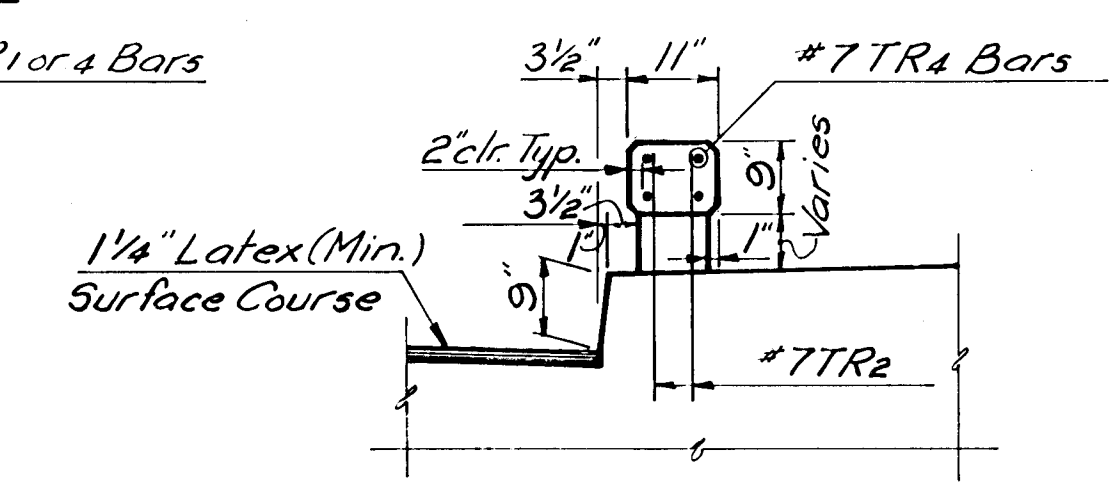
**SECTION F-F**



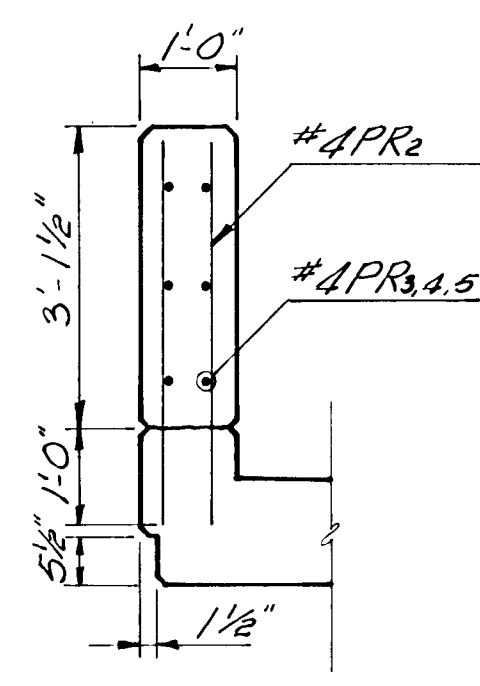
**SECTION E-E**



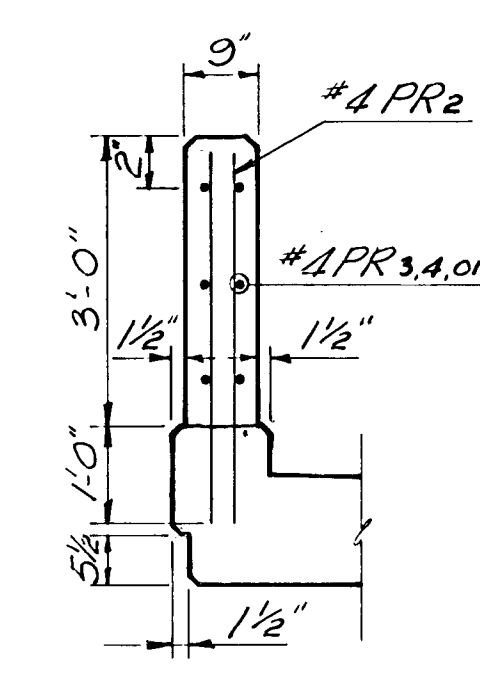
**SECTION D-D**



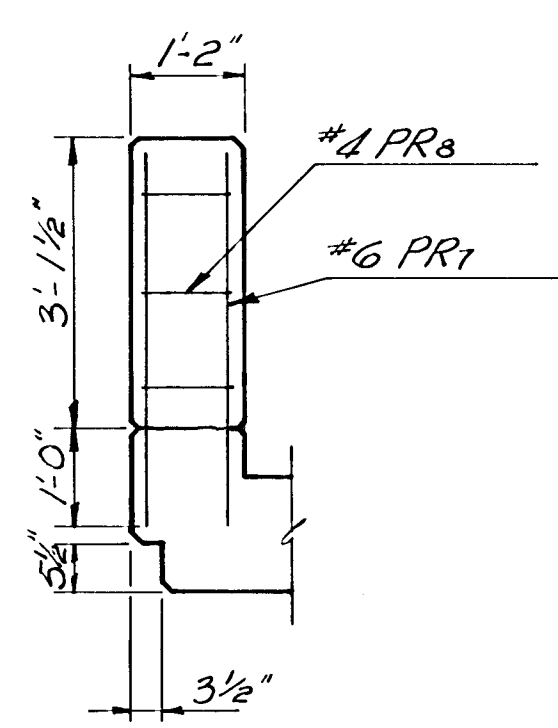
**SECTION G-G**



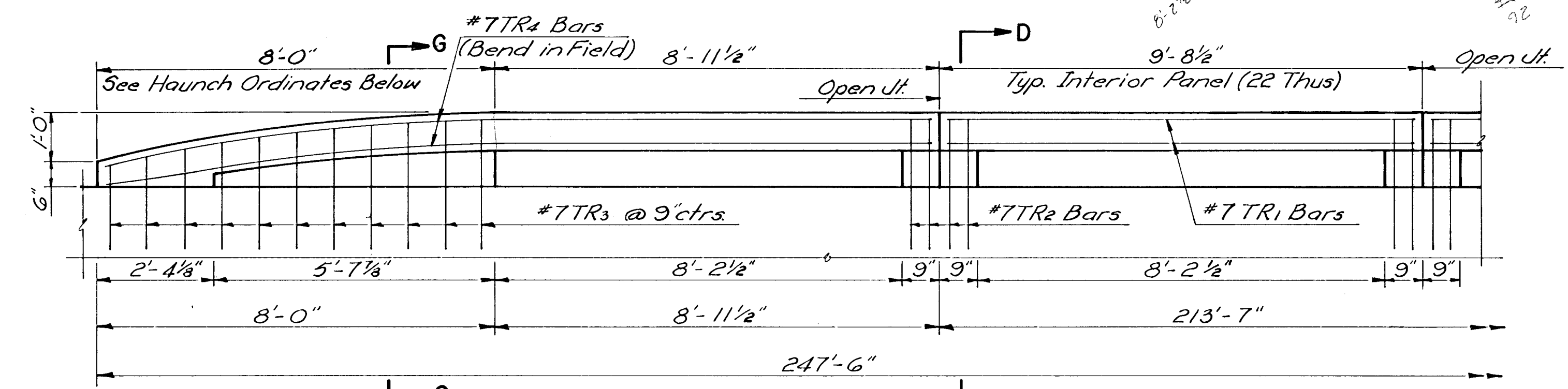
**SECTION C-C**



**SECTION B-B**

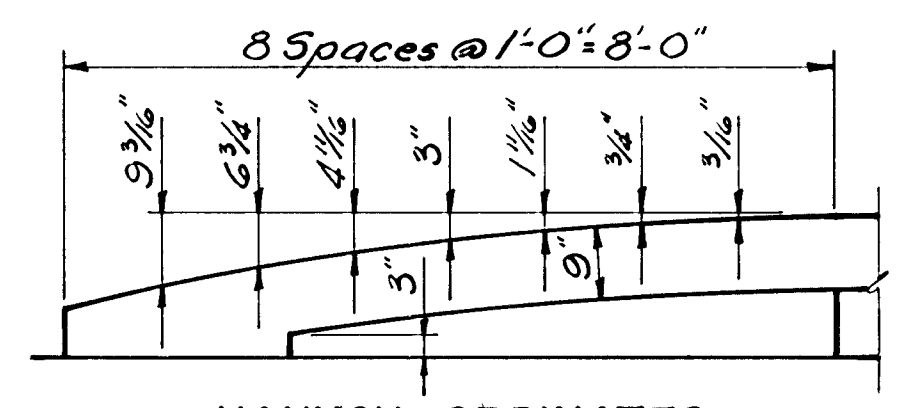


**SECTION A-A**



**TRAFFIC RAIL ELEVATION**

All handrail joints shall be 1/2" open joints except those within 10'-0" of the piers and those shall be 1/4" open joints.



**HAUNCH ORDINATES**

CITY OF WICHITA KANSAS  
R.W. LINN, PE. CITY ENGINEER  
**HANDRAIL DETAILS**  
WOODMAN BRIDGE  
OVER THE LITTLE ARKANSAS RIVER  
CITY OF WICHITA PROJECT NO. DAKB 576042  
**PROFESSIONAL ENGINEERING CONSULTANTS, P.A.**  
ENGINEERS  
WICHITA, KANSAS

Designed by	Checked by
Drawn by	Date
	Job No.