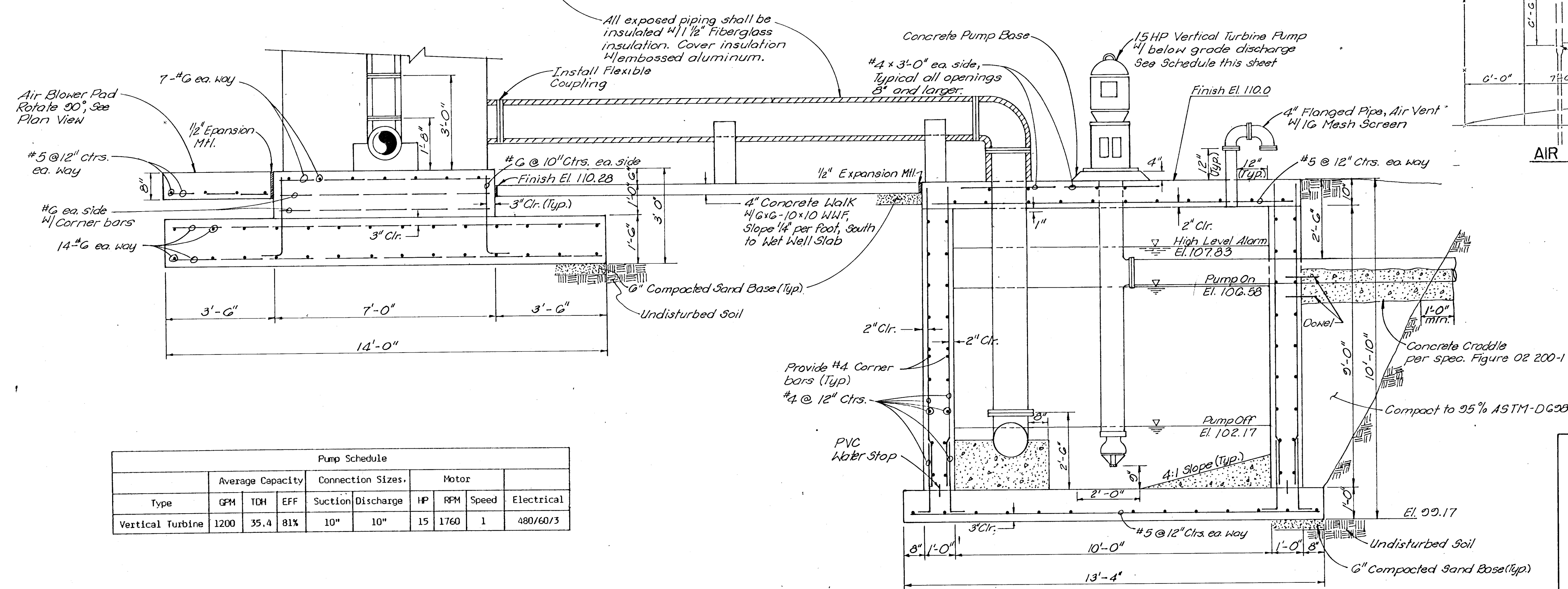
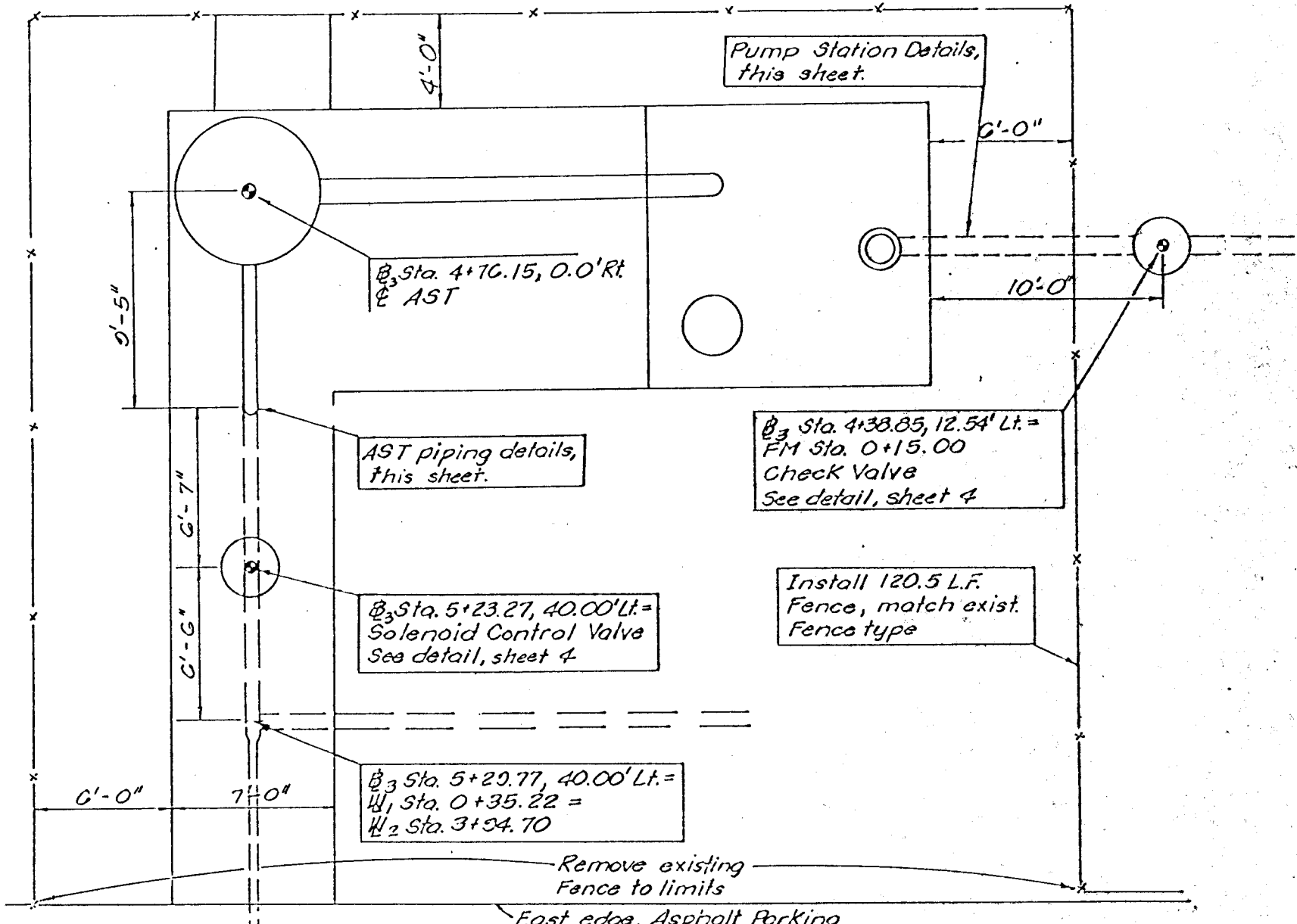


- NOTES
- MANHOLE STEPS SHALL BE M.A. INDUSTRIES MODEL PS-1-PF OR AN APPROVED EQUAL.
 - M.A. INDUSTRIES
P.O. BOX 2322
PEACH TREE CITY, GA 30269
(404) 487-7761
 - ALL INTERIOR SURFACES OF THE WET WELL SHALL HAVE TWO COATS TNEPEC 66 HIGH-BUILD EPOXY. THE EPOXY SHALL BE APPLIED IN ACCORDANCE WITH THE MANUFACTURER'S RECOMMENDED APPLICATION PROCEDURES.
 - THE CONTRACTOR SHALL APPLY TWO COATS EXTERIOR BITUMASTIC TO ALL BURIED SURFACES OF THE WET WELL.
 - SEE ELECTRICAL DETAILS ON SHEET NO. 5.
 - INSTALL FLOAT CONTROLS FOR TURBINE PUMP ON/OFF HIGH LEVEL ALARM TO THE ELEVATIONS SHOWN. CONNECT FLOATS TO MANHOLE STEPS AND SECURE TO PREVENT DAMAGE BY ACCESSING MANHOLE.
 - CONCRETE 3,500 P.S.I. MINIMUM, 3/4" ROCK, 5-7% AIR CONTENT AT 28 DAYS.
 - ASIS - GRADE 10 REINFORCING STEEL - 40,000 P.S.I. YIELD MINIMUM.
 - DESIGN WIND LOAD 80 MPH PER UBC-85.
 - MINIMUM ALLOWABLE SOIL BEARING 2,000 P.S.F.
 - SEE AIR STRIPPER SHOP DRAWING FOR ANCHOR BOLT SIZE AND SPACING.
 - GRADE SITE TO DRAIN AWAY FROM CONCRETE AT 12:1 MINIMUM SLOPES, MATCH EXISTING ASPHALT PAVEMENT EDGE.



Pump Schedule								
Type	Average Capacity			Connection Sizes		Motor		
	GPM	TDH	EFF	Suction	Discharge	HP	RPM	Speed
Vertical Turbine	1200	35.4	81%	10"	10"	15	1760	1 480/60/3

SECTION A-A
No Scale

AIR STRIPPER TOWER (AST) & PUMP STATION SITE PLAN

No.	Revision	By	Date
CESSNA AIRCRAFT COMPANY WICHITA, KANSAS AIR STRIPPER FOUNDATION AND WET WELL PUMP STATION PLAN AND SECTION DETAILS WITHDRAWAL WATERLINE IMPROVEMENTS PROFESSIONAL ENGINEERING CONSULTANTS, P.A. ENGINEERS WICHITA, KANSAS			
Designed by	MDS, CRY	Job No.	34-87642
Drawn by	TLS	Date	August, 1988
			Sht. 3 of 20