

PI #2 Baseline No. 3 Sta. 0+00 = Baseline No. 1 Sta. 13+40.93, PK Nail and Shiner

1. Nail and Shiner in SE Face of Power Pole 27.98 N
2. Nail and Shiner in S Face of Power Pole 107.73 NE
3. Centerline of 31st Street South 2.70 S
4. 6 Foot Chain Link Fence East-West 51.00 S

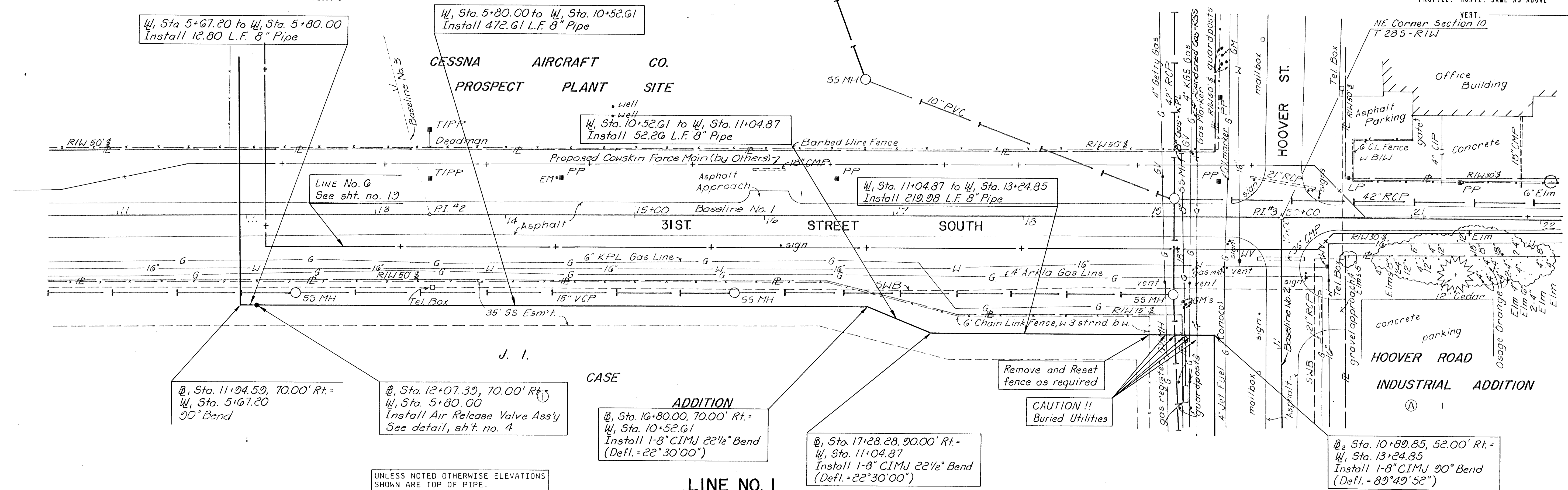
PI #3 Baseline No. 1 Sta. 20+00 = Baseline No. 2 Sta. 10+00 = NE Corner, Section 10, T28S, R1W, 3/4" Iron Pipe in Thimble

1. Top Center of Fire Hydrant 61.80 SE
2. Center of Steel Fence Corner Post 62.42 NE
3. Nail and Shiner NNE Face of Power Pole 54.72 NW

SCALE:



PLAN	SURVEYED	DATE
	ADJUSTMENT CHECKED	
	NOTE BOOK	
	NO.	



PROFILE	SURVEYED	DATE
	GRADES CHECKED	
	B. M'S NOTED	
	STRUCTURE NOTATIONS CHECKED	

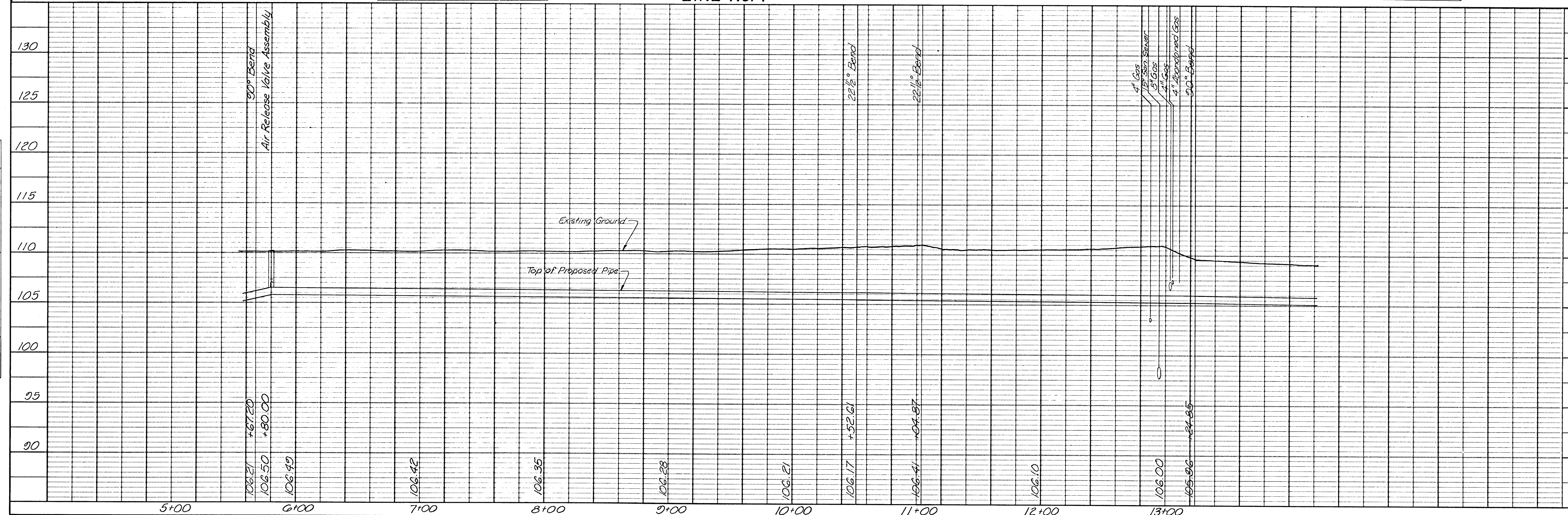


PLATE 1 PLAN PROFILE OF GAS MAIN STANDARD EUGENE DIETZGEN CO.

PROFESSIONAL ENGINEERING CONSULTANTS, P.A.  
 ENGINEERS  
 WICHITA, KANSAS

CESSNA AIRCRAFT COMPANY  
 WICHITA, KANSAS

**LINE NO. 1**  
**W, Sta. 5+67.20 to W, Sta. 13+24.85**  
 WITHDRAWAL WATERLINE IMPROVEMENTS

Designed by MDS, CRY  
 Drawn by MKK, TLS, GM  
 Job No. 34-87042  
 Date August, 1988

Sheet 7 of 20