

PI #5 Baseline Sta. No. 2 Sta. 36+58.76, Nail and Shiner in Centerline of Hoover Street

- Three Nails and Shiners in Fence Post 86.92 NW
- Three Nails and Shiners in Power Pole 34.26 SW
- Three Nails and Shiners in Corner Fence 50.98 E
- Chiseled "H" on N end of RCP 44.08 NE
- 5/8" Rebar with Cap 25.00 W

1/4 Sta. 0+11.46 to 1/4 Sta. 0+20.00
Install 8.54 L.F. 4" Pipe

1/4 Sta. 0+20.00 to 1/4 Sta. 0+42.83
Install 23.27 L.F. 4" Pipe

1/4 Sta. 36+58.76, 146.78' Rt.
1/4 Sta. 0+68.78
End Waterline No. 4
Begin Const. Flow Meter Vault
See detail, sht. no.

1/4 Sta. 0+42.83 to 1/4 Sta. 0+168.78
Install 25.95 L.F. 4" Pipe

1/4 Sta. 36+58.76, 165.11' Rt.
Water Well # R-3

1/4 Sta. 36+58.76, 120.83' Rt =
1/4 Sta. 0+42.83
Install 1-4" CIMJ 11 1/4° Bend
(Vertical)

1/4 Sta. 36+58.76, 90.98' Rt =
1/4 Sta. 0+11.46
Install 1-4" CIMJ 11 1/4° Bend
(Vertical)

1/4 Sta. 36+58.76, 89.46' Rt =
1/4 Sta. 0+11.46
Install 1-4" CIMJ 22 1/2° Bend
(Vertical)

1/4 Sta. 36+58.76, 120.83' Rt =
1/4 Sta. 0+42.83
Install 1-4" CIMJ 22 1/2° Bend
(Vertical)

1/4 Sta. 36+58.76, 120.83' Rt =
1/4 Sta. 0+42.83
Install Air Release Valve Assembly
See detail, sheet no. 4

1/4 Sta. 36+58.76, 120.83' Rt =
1/4 Sta. 0+42.83
Install 1-4" CIMJ 22 1/2° Bend
DePI = 22°30'00"

PI #6 Baseline No. 2 Sta. 50+86.37, Nail and Shiner in Centerline of Hoover Street

- Chiseled "H" in Gas Vent Pipe 41.36 NW
- Chiseled "H" in Gas Vent Pipe 53.80 SW
- Chiseled "H" in NW Corner End of Sidewalk 61.88 SE
- Chiseled "H" in N end of RCP 56.99 NE

1/4 Sta. 0+55.97 to 1/4 Sta. 0+69.08
Install 13.11 L.F. 4" Pipe

1/4 Sta. 0+28.00 to 1/4 Sta. 0+55.97
Install 27.97 L.F. 4" Pipe

1/4 Sta. 0+00.00 to 1/4 Sta. 0+28.00
Install 28.00 L.F. 4" Pipe

1/4 Sta. 50+47.02, 20.0' Rt. to 1/4 Sta. 50+64.24, 21.57' Lt.
1/4 Sta. 0+69.08 to 1/4 Sta. 1+14.08
Install 45.0 L.F. 4" Pipe
Install 45.0 L.F. 4" Boring & Steel Encasement
See detail, sht. no. 4

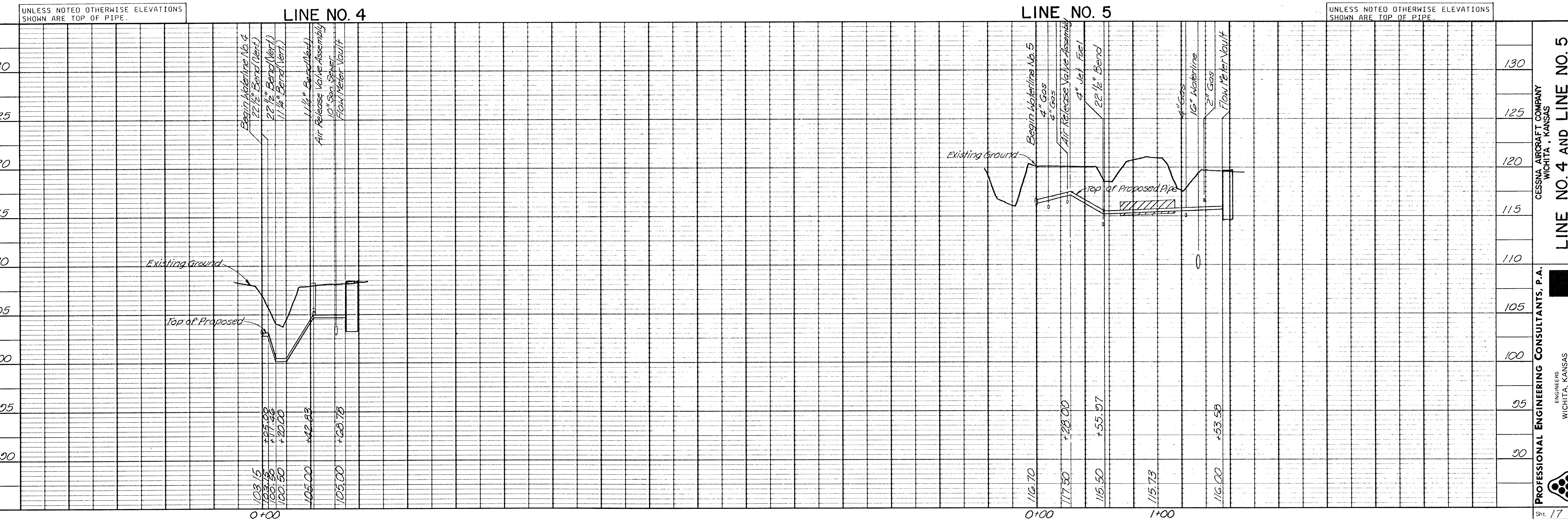
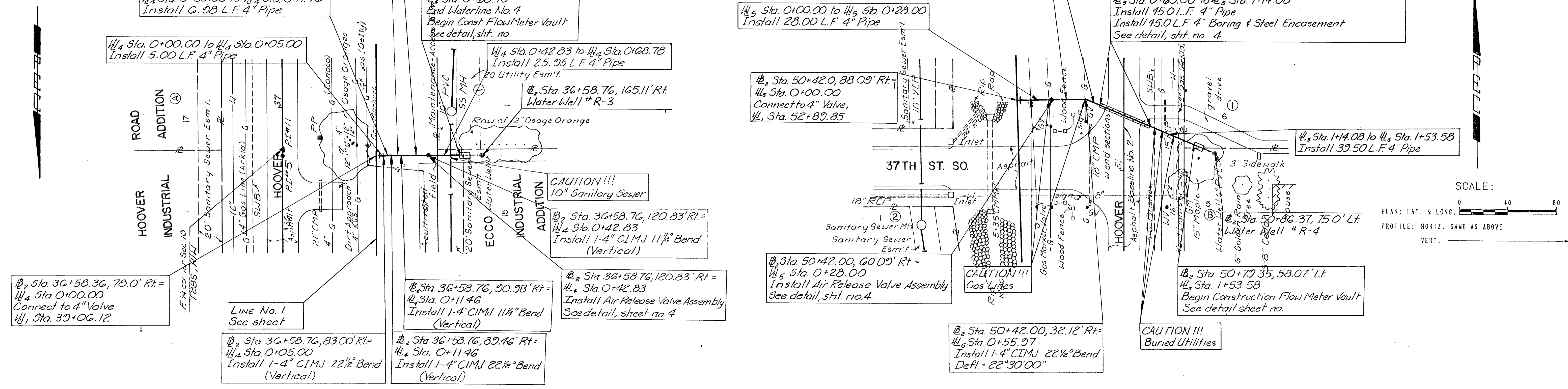
1/4 Sta. 1+14.08 to 1/4 Sta. 1+53.58
Install 39.50 L.F. 4" Pipe

1/4 Sta. 50+42.0, 88.09' Rt =
1/4 Sta. 0+00.00
Connect to 4" Valve,
1/4 Sta. 52+89.85

1/4 Sta. 50+42.0, 60.09' Rt =
1/4 Sta. 0+28.00
Install Air Release Valve Assembly
See detail, sht. no. 4

1/4 Sta. 50+42.0, 32.12' Rt =
1/4 Sta. 0+55.97
Install 1-4" CIMJ 22 1/2° Bend
DePI = 22°30'00"

1/4 Sta. 50+79.35, 58.07' Lt.
1/4 Sta. 1+53.58
Begin Construction Flow Meter Vault
See detail sheet no.



PLAN	SURVEYED	DATE
	PLOTTED	BY
	GRADES CHECKED	
	STRUCTURE NOTATIONS CHECKED	
	NOTE BOOK	
	NO.	

PROFILE	SURVEYED	DATE
	PLOTTED	BY
	GRADES CHECKED	
	STRUCTURE NOTATIONS CHECKED	
	NOTE BOOK	
	NO.	

UNLESS NOTED OTHERWISE ELEVATIONS SHOWN ARE TOP OF PIPE.

LINE NO. 4 AND LINE NO. 5

PROFESSIONAL ENGINEERING CONSULTANTS, P.A.
ENGINEERS
WICHITA, KANSAS

CESSNA AIRCRAFT COMPANY
WICHITA, KANSAS

Job No. 84-87042
Drawn by MKK, T.L.S., GM
Date August, 1988

WITHDRAWAL WATERLINE IMPROVEMENTS

PLATE 1 PLAN PROFILE © P. E. & S. STANDARD
EUGENE DIEZGEN CO.

Sht. 17 of 20