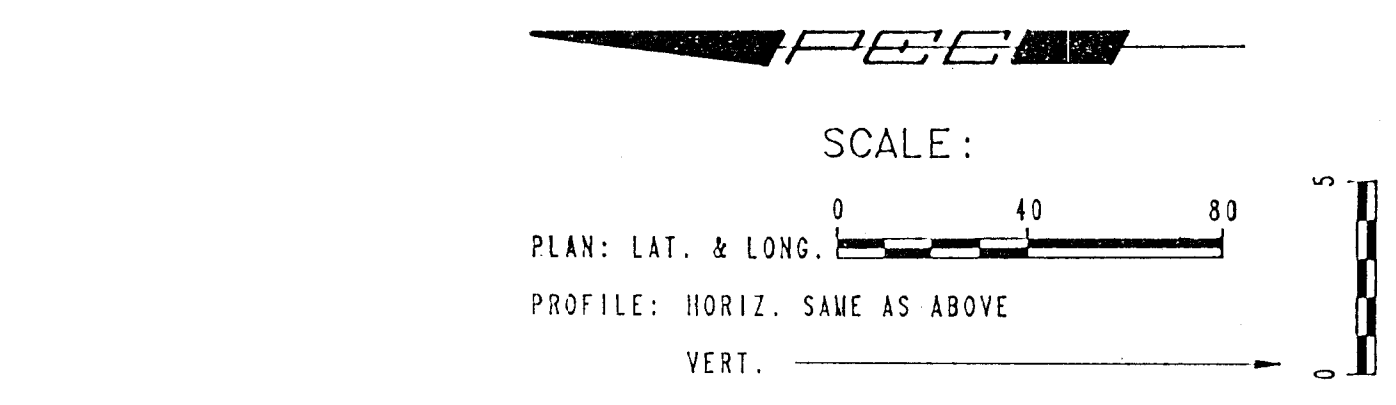
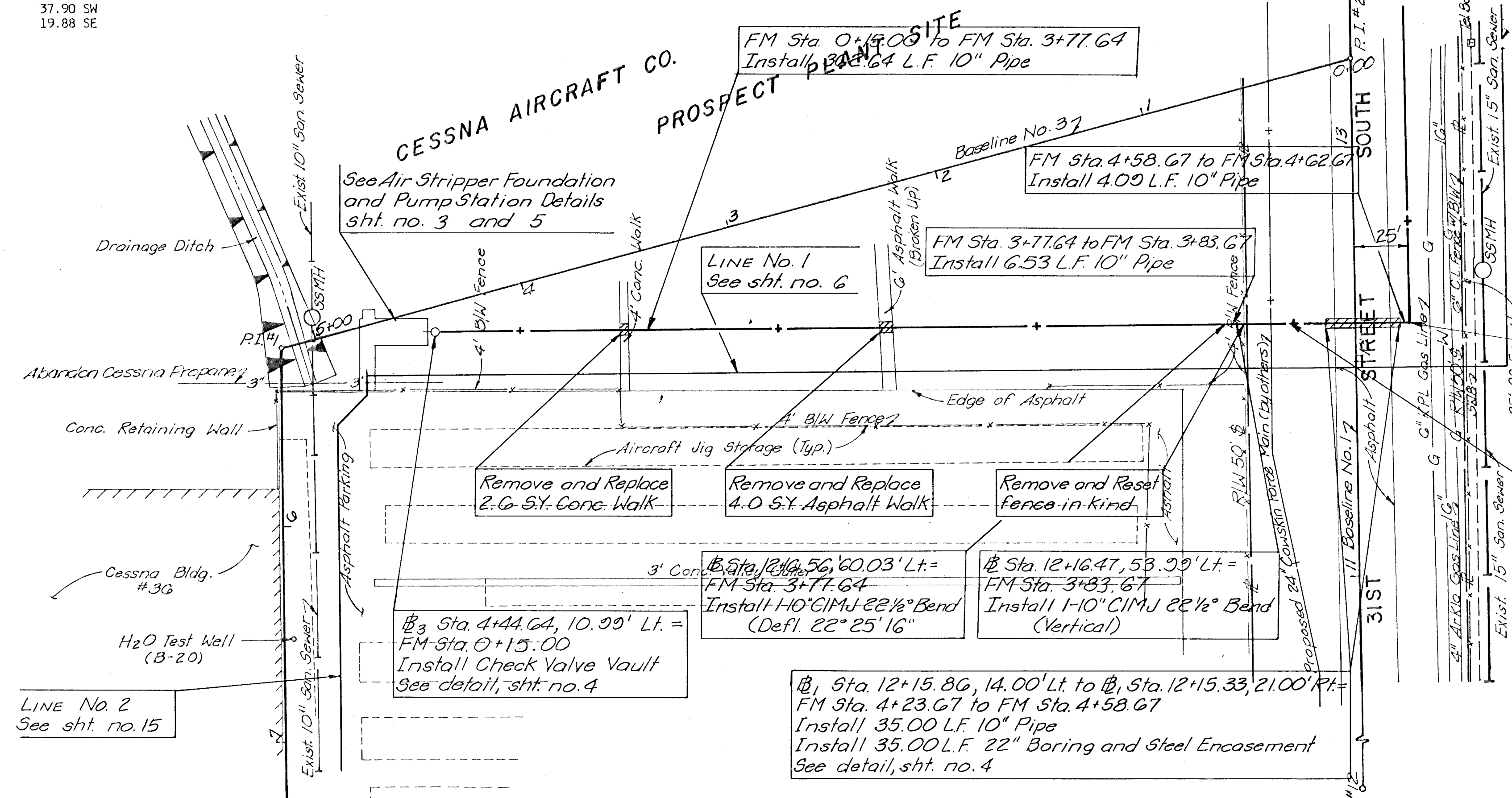


- PI #1 Baseline #6 - Sta. 5+17.42, 5/8" Rebar with Cap
1. Chiseled "+" in SE Corner Concrete Slab 76.04 MW
 2. Nail and Shiner in Corner Fence Post 19.39 W
 3. Nail and Shiner in North Face of Fence Post 37.90 SW
 4. Chiseled "+" in North Rim of Sanitary Sewer Manhole 19.88 SE

- PI #2 Baseline #6 Sta. 0+00 = Baseline #1 Sta. 13+40.93, PK Nail and Shiner
1. Nail and Shiner in SE Face of Power Pole 27.98 N
 2. Nail and Shiner in S Face of Power Pole 107.73 NE
 3. Centerline of 31st Street South 2.70 S
 4. 6 Foot Chain Link Fence East-West 51.00 S

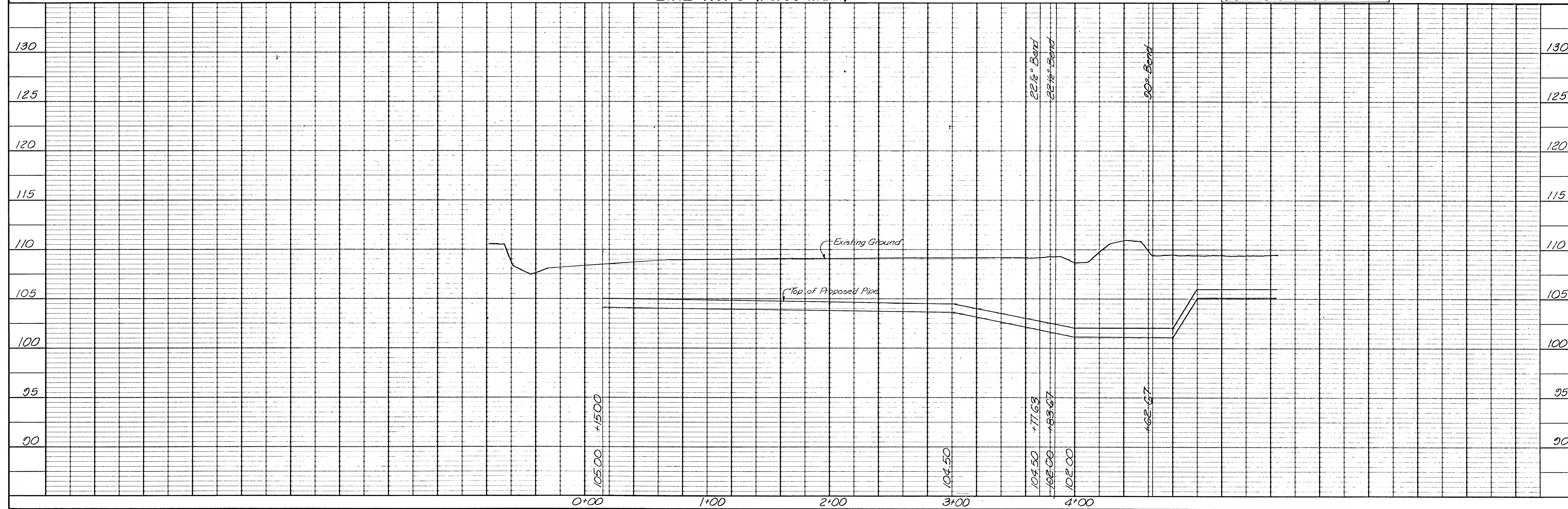
PLAN	DATE
SURVEYED	
NOTE BOOK	
ALIGNMENT CHECKED	
RT. OF WAY CHECKED	
NO.	

PROFILE	DATE
SURVEYED	
GRADES CHECKED	
B. M. NOTED	
STRUCTURE NOTATIONS CHECKED	
NO.	



LINE NO. 6 (Force Main)

UNLESS NOTED OTHERWISE ELEVATIONS SHOWN ARE TOP OF PIPE.



CESSNA AIRCRAFT COMPANY
WICHITA, KANSAS
LINE NO. 6 (Force Main)

PROFESSIONAL ENGINEERING CONSULTANTS, P.A.
ENGINEERS
WICHITA, KANSAS
Job No. 34-57042
Date: August, 1988
Designed by MDS:CRY
Drawn by MKK:TLS:GM

WITHDRAWAL WATERLINE IMPROVEMENTS