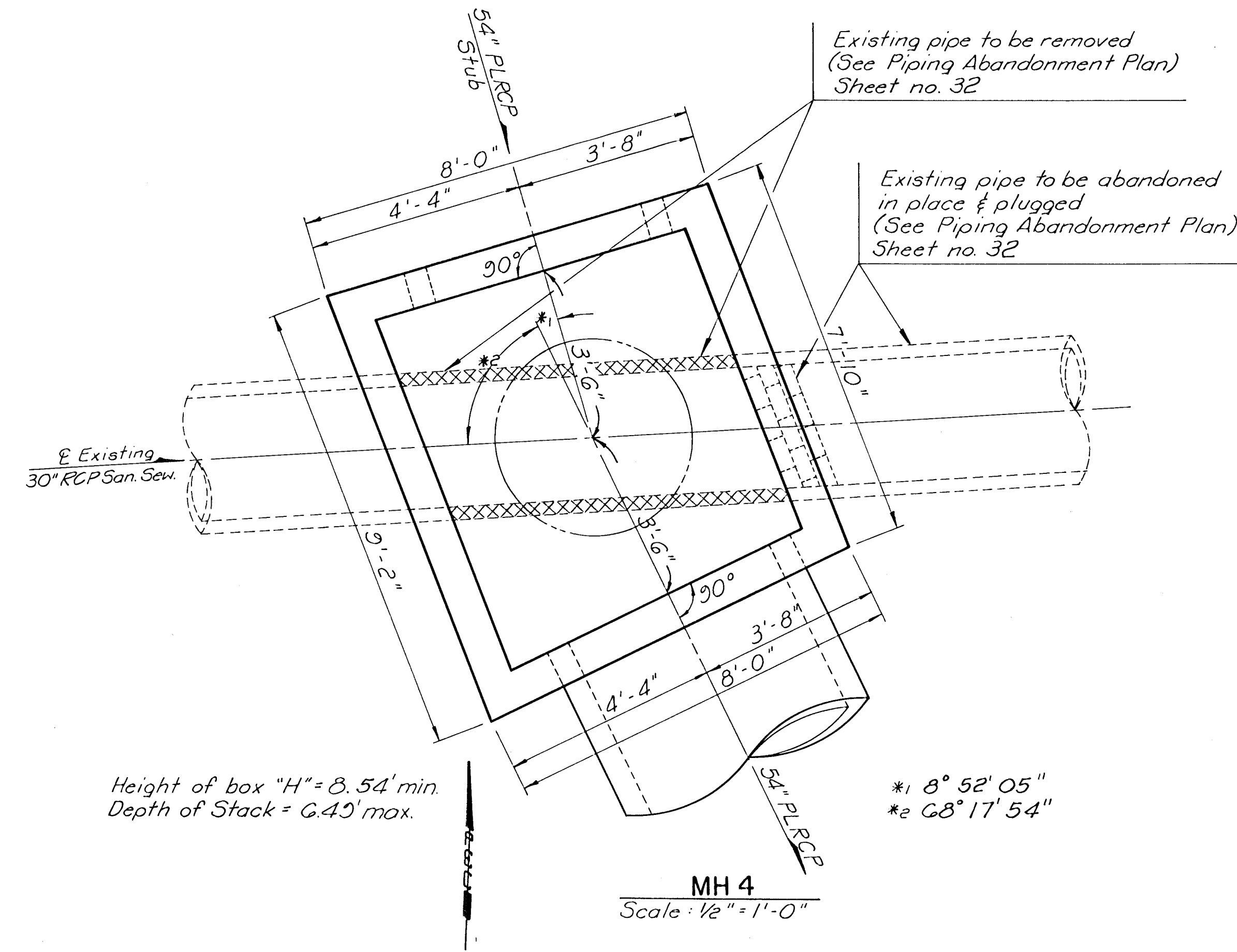
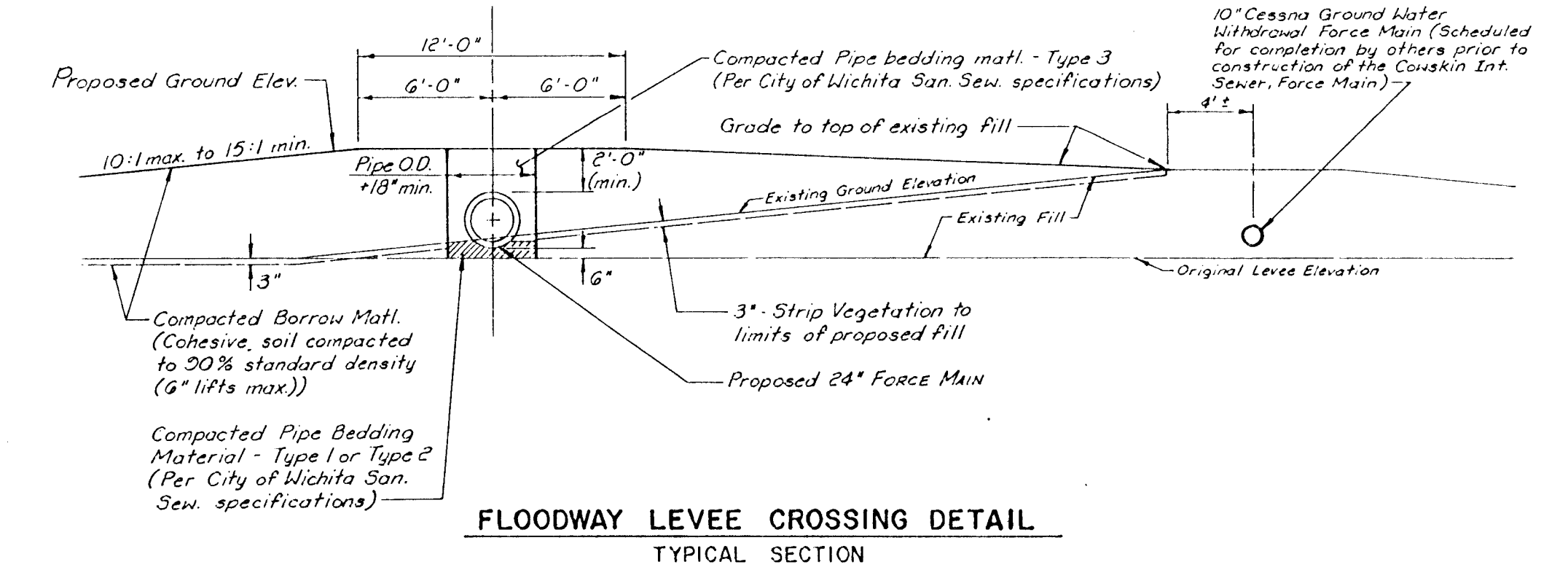


BREAK-IN AT REINFORCED CONCRETE MANHOLE
FORCE MAIN STATION 0+00.00, SHEET NO. 6

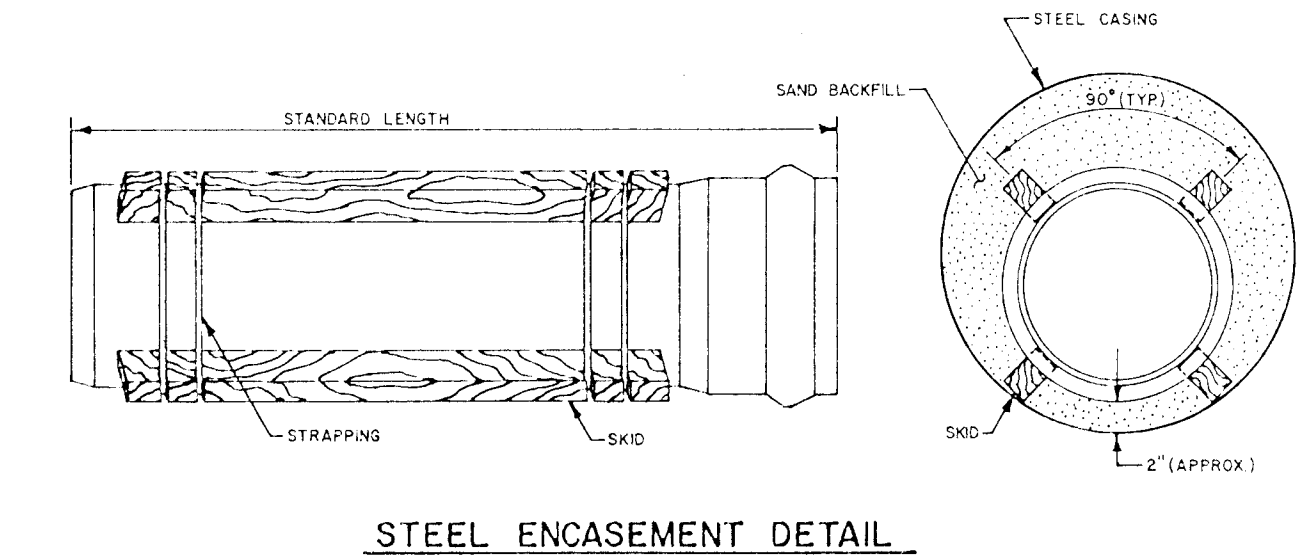


Height of box "H" = 8.54' min.
Depth of Stack = 6.45' max.

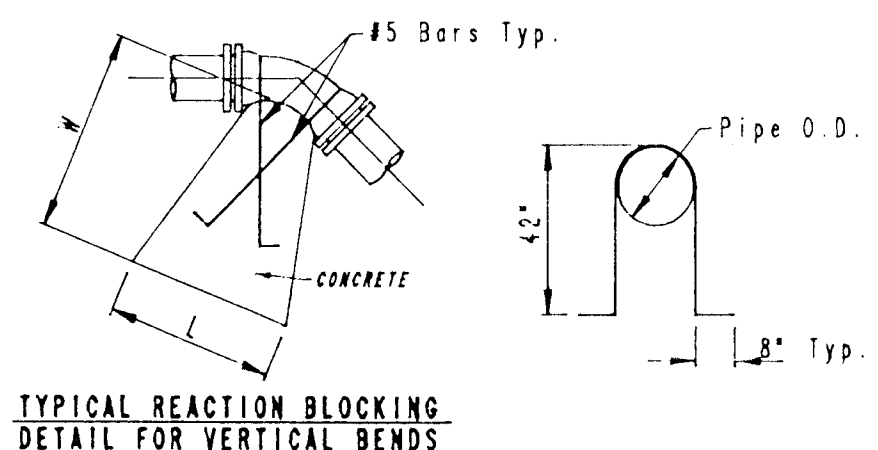
MH 4
Scale: 1/2" = 1'-0"



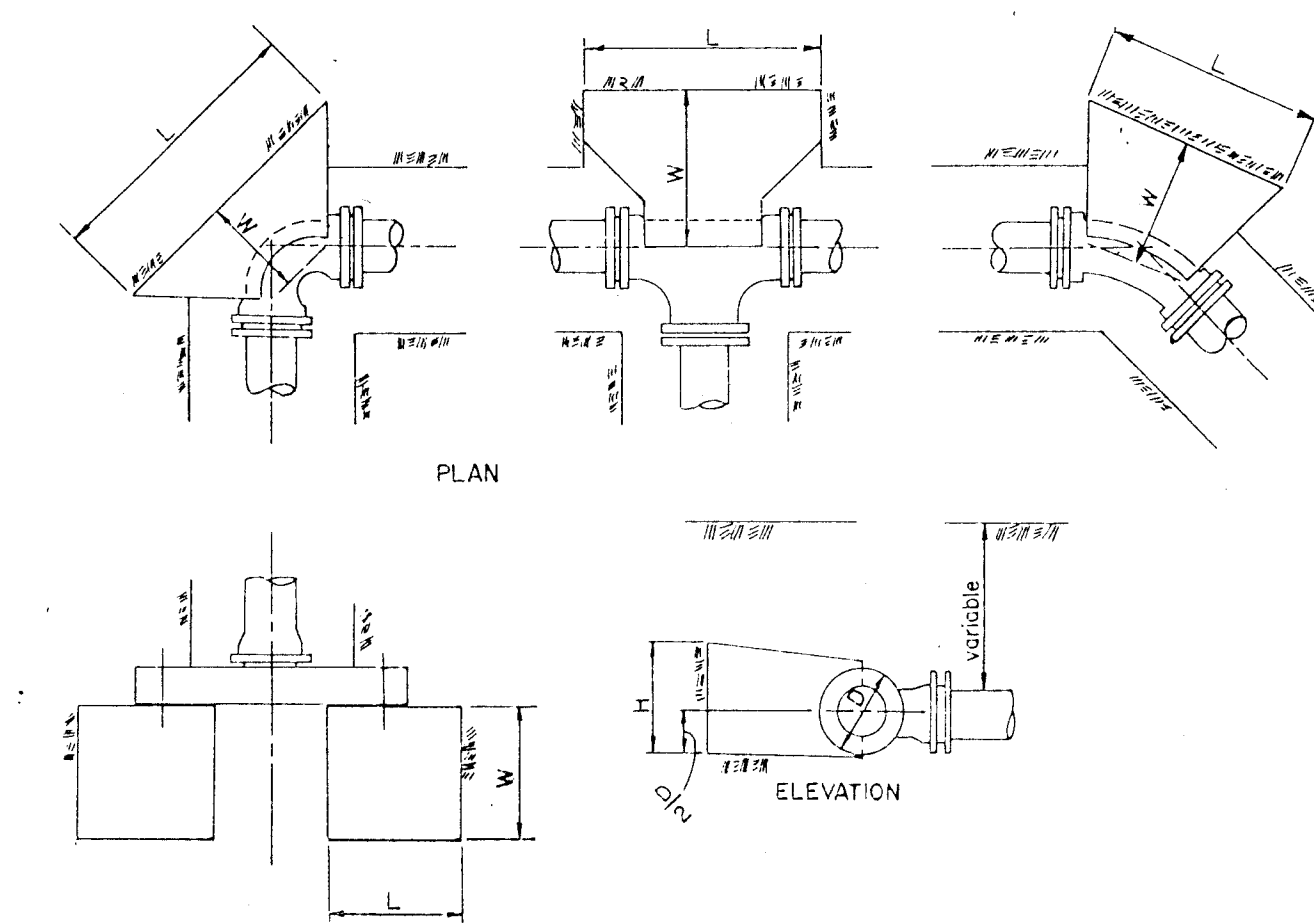
FLOODWAY LEVEE CROSSING DETAIL
TYPICAL SECTION



STEEL ENCASEMENT DETAIL



TYPICAL REACTION BLOCKING DETAIL FOR VERTICAL BENDS



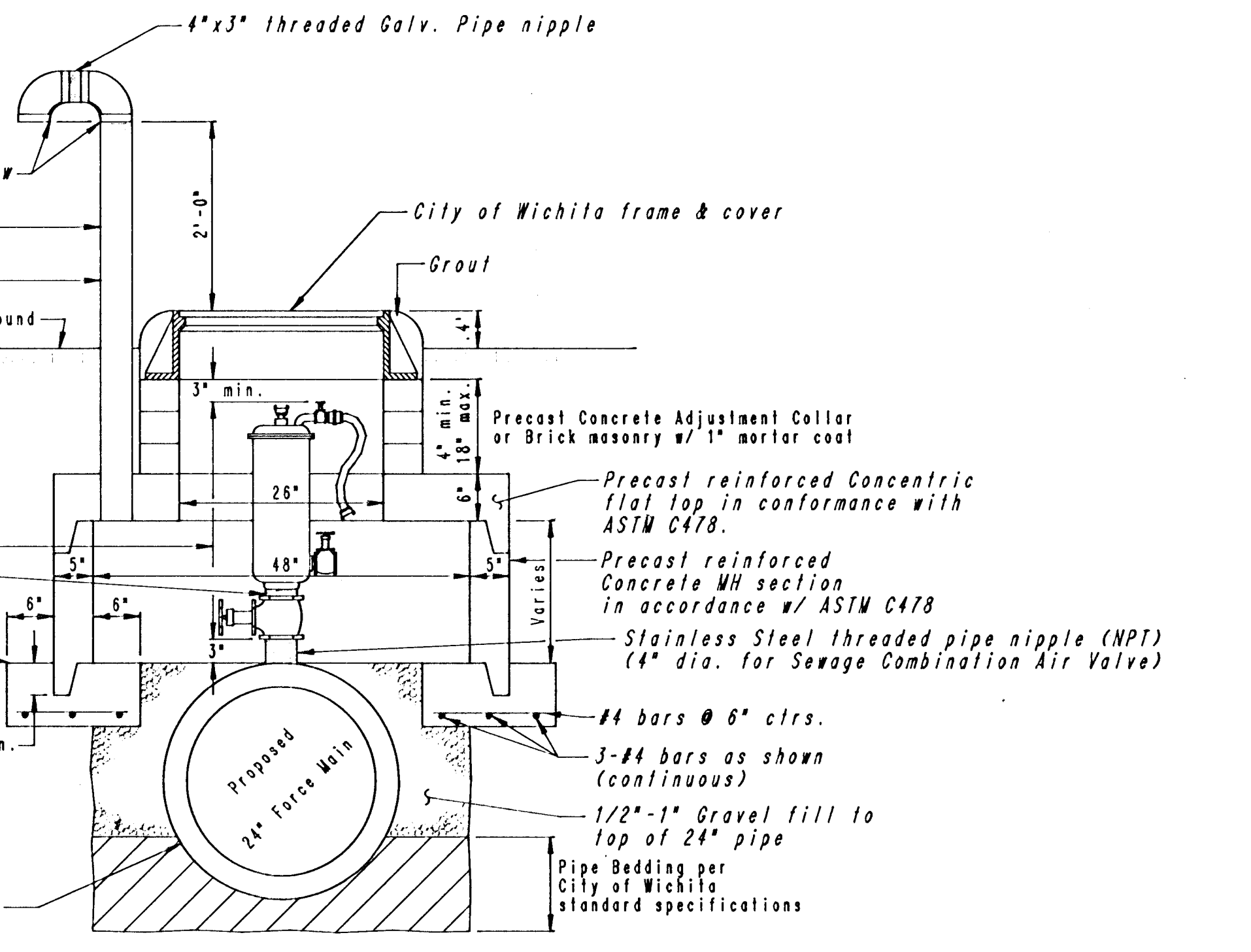
LINE SIZE	FITTINGS (ANGLE)	DIM. L	DIM. W	DIM. H
Horizontal Bends				
24"	30°	5'-0"	3'-0"	5'-0"
24"	45°	5'-0"	3'-0"	4'-0"
24"	22 1/2°	5'-0"	3'-0"	3'-0"
24"	11 1/4°	4'-0"	3'-0"	3'-0"
Vertical Bends				
24"	45°	3'-0"	6'-0"	3'-0"
24"	22 1/2°	3'-0"	6'-0"	3'-0"
24"	11 1/4°	3'-0"	6'-0"	3'-0"

Air Valves shall be APCO Model 449, 4" Sewage Combination Air Valve with attachments (Height=30") as indicated in the AIR VALVE LOCATION TABLE

Stainless Steel threaded pipe nipple (by APCO)
City concrete pavement mix

NOTE: ALL AIR VALVES SHALL HAVE ORIFICE SEATS DESIGNED FOR SHUT-OFF AT AN OPERATING PRESSURE OF 12 P.S.I. WITHOUT LEAKAGE, SPILLING, OR SPURTING. THE MAXIMUM OPERATING PRESSURE IS APPROXIMATELY 20 P.S.I.

FORCE MAIN STATION	BASELINE STATION/OFFSET	VALVE SIZE/MODEL	PLAN SHEET NO.
23+50	81 STA. 24+98.06 45.00' RT.	4" SEWAGE COMBINATION AIR VALVE APCO MODEL 449	8 OF 42
52+60	81 STA. 54+07.96 45.00' RT.	4" SEWAGE COMBINATION AIR VALVE APCO MODEL 449	11 OF 42
55+00	81 STA. 58+47.91 45.00' RT.	4" SEWAGE COMBINATION AIR VALVE APCO MODEL 449	11 OF 42
174+84	81 STA. 52+25.73 4.47' RT.	4" SEWAGE COMBINATION AIR VALVE APCO MODEL 449	14 OF 42
183+99	81 STA. 61+72.03 18.87' LT.	4" SEWAGE COMBINATION AIR VALVE APCO MODEL 449	14 OF 42
190+35.5	81 STA. 67+90.38 0.58' RT.	4" SEWAGE COMBINATION AIR VALVE APCO MODEL 449	15 OF 42
195+00	81 STA. 72+38.46 49.00' RT.	4" SEWAGE COMBINATION AIR VALVE APCO MODEL 449	16 OF 42
228+00	81 STA. 105+31.82 19.50' LT.	4" SEWAGE COMBINATION AIR VALVE APCO MODEL 449	19 OF 42
233+60	81 STA. 109+81.03 39.86' RT.	4" SEWAGE COMBINATION AIR VALVE APCO MODEL 449	20 OF 42
248+00	81 STA. 246+73.66 125.65' LT.	4" SEWAGE COMBINATION AIR VALVE APCO MODEL 449	22 OF 42
278+00	81 STA. 279+68.24 23.41' LT.	4" SEWAGE COMBINATION AIR VALVE APCO MODEL 449	25 OF 42
295+00	81 STA. 295+90.89 7.89' RT.	4" SEWAGE COMBINATION AIR VALVE APCO MODEL 449	28 OF 42



AIR VALVE ASSEMBLY DETAIL

APPROVED
BY *Sandy D. Hogan*
TULSA DISTRICT ENGINEER
CORPS OF ENGINEERS
DATE *Jan 12, 1989*

PRELIMINARY
DEC 14 1988

No.	Revision	By	Date
COWSKIN INTERCEPTOR SEWER FORCE MAIN: PART B			
MISCELLANEOUS DETAILS			
MICHAEL E. LINDEBAK, P.E. - CITY ENGINEER CITY OF WICHITA PROJECT NO. 468-76-245-000-000-001			
PROFESSIONAL ENGINEERING CONSULTANTS, P.A.			
ENGINEERS WICHITA, KANSAS			
Designed by	DLM, RFJ	Job No.	34-86535-4
Drawn by	DMM	Date	August, 1988
			Sht. 36 of 42