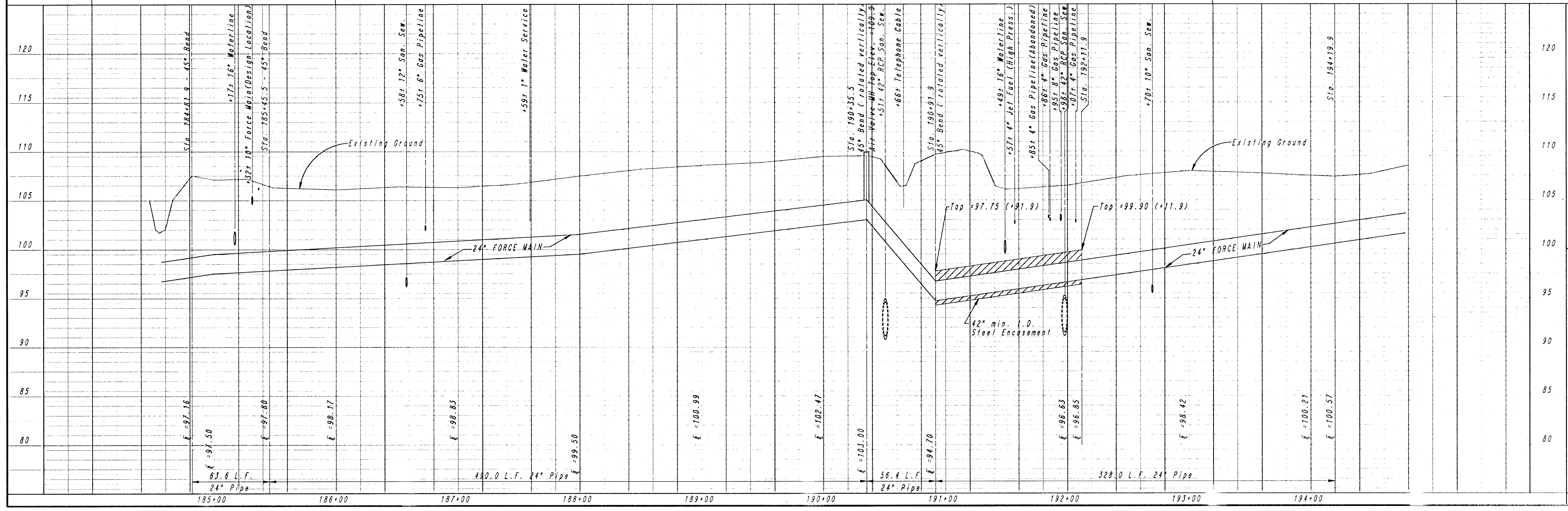


PRELIMINARY

DEC 14 1988

BW-50 - CITY OF WICHITA DISC AT NORTHEAST CORNER HOOPER ROAD AND 31ST STREET SOUTH. (BASELINE 5, STA. 68+11.6, 31.5' RT.) ELEV. = 108.52

BW-51 - RAILROAD SPIKE IN SOUTH FACE POWER POLE AT NORTH SIDE 31ST STREET SOUTH ON WEST SIDE HOOPER ROAD. (BASELINE 5, STA. 74+10.0, 28.0' RT.) ELEV. = 109.66



PROFESSIONAL ENGINEERING CONSULTANTS, P. A.  
 ENGINEERS  
 WICHITA, KANSAS

DESIGNED BY DLM, RFJ  
 DRAWN BY DMM

CITY OF WICHITA PROJECT NO. 488-76-245-8XXXX-000-001

DATE JUNE, 1988

Job No. 34-86535-4

COMSKIN INTERCEPTOR SEWER FORCE MAIN, PART B

STA. 184+81.9 to STA. 194+19.9

MICHAEL E. LINDEBAK, P. E. - CITY ENGINEER

Sheet 15 of 42