

P.O.T. Sta. 90+00
Concrete Nail on Sec. Line
42.9'SW to Nail & Cap in PP
99.5'NW to Nail & Cap in PP
113.5'NW to Top FH

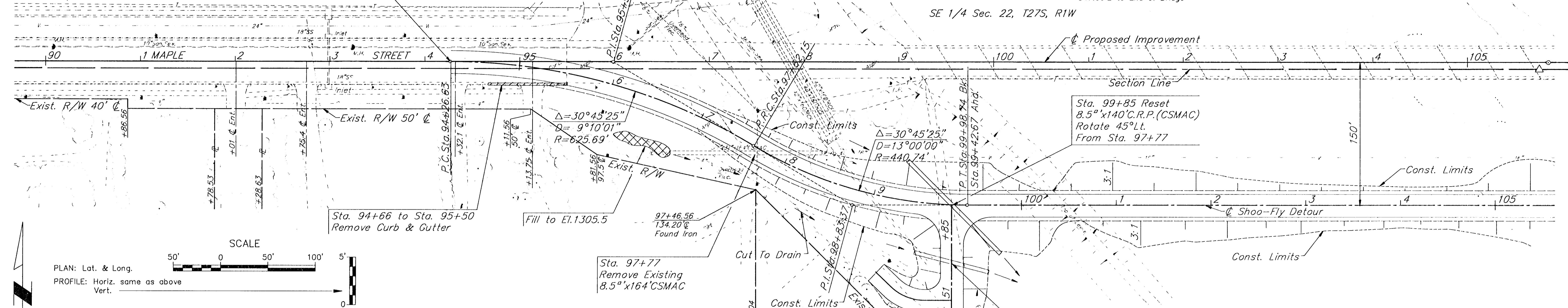
Sta. 94+26.63 BEGIN
Shoo-Fly Detour

P.O.T. Sta. 95+00
Chis. "F" Concrete Nail on Sec. Line
30.8'SSW to Top TUB
126.3'WNW to Nail & Cap in LP
54.25'NE to Center of Storm Sewer MH

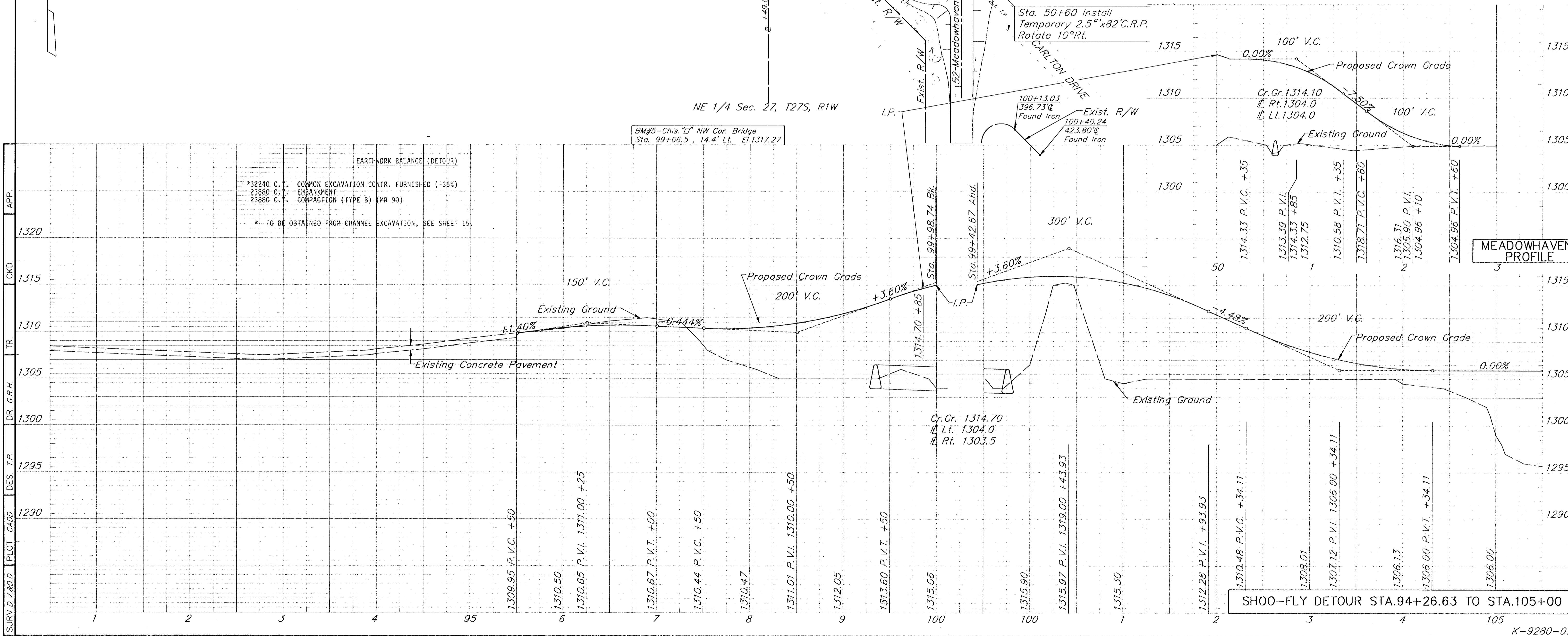
P.O.T. Sta. 105+85.26
Thimble 1/2" Iron Pipe
14.56'N to Chis. "+" on Hubguard
14.68'S to Chis. "+" on Hubguard
547.06'E to End of Bridge

SW Cor. Sec. 23, T27S, R1W
Sta. 105+75.77, 7.35' Rt.

FHWA REGION NO.	STATE	PROJECT NO.	YEAR	SHEET NO.	TOTAL SHEETS
7	KANSAS	87U-1187-01	1988	10	34



SCALE
PLAN: Lat. & Long.
PROFILE: Horiz. same as above
Vert. 0 5'



SHOO-FLY DETOUR STA.94+26.63 TO STA.105+00