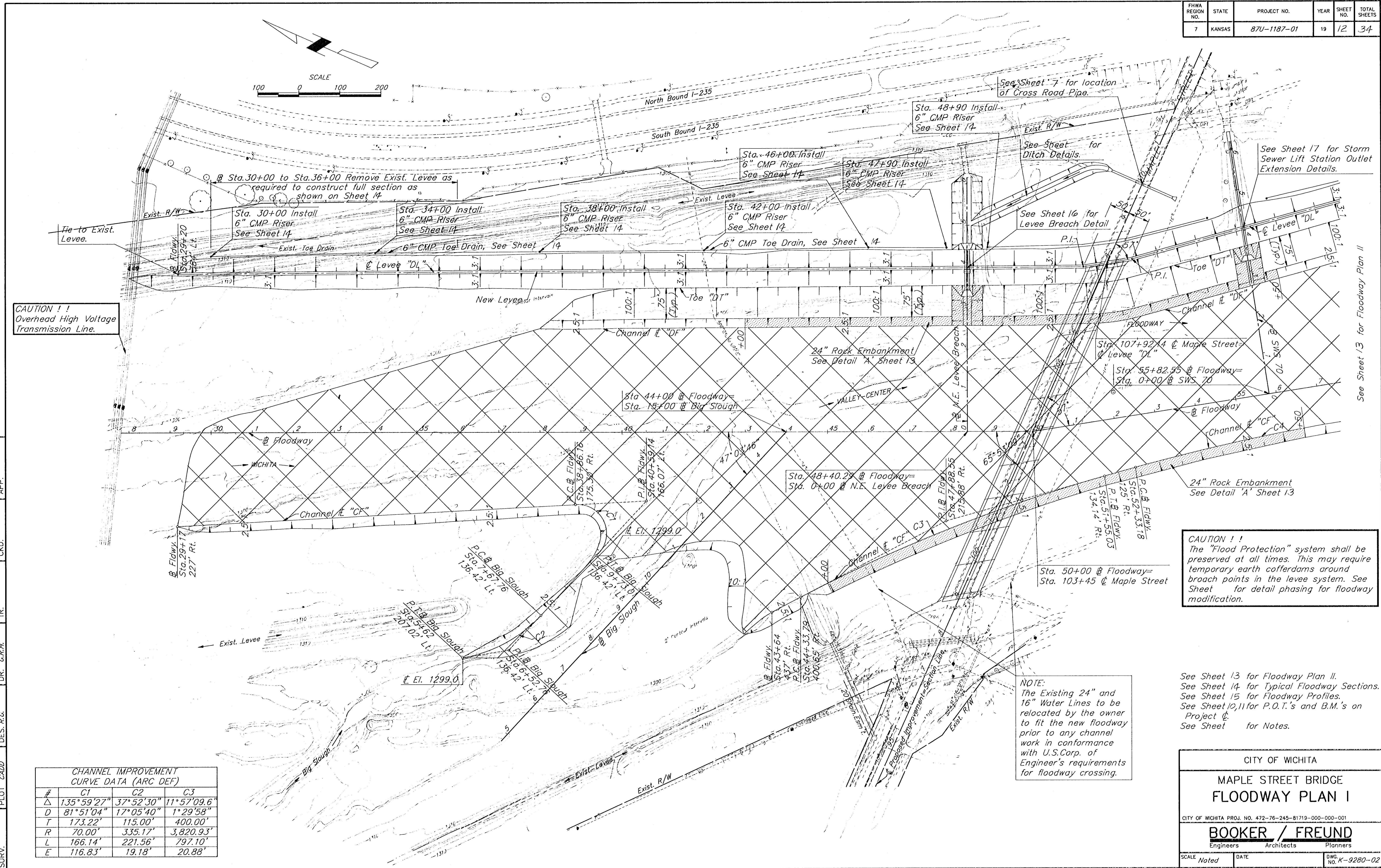


FHWA REGION NO.	STATE	PROJECT NO.	YEAR	SHEET NO.	TOTAL SHEETS
7	KANSAS	87U-1187-01	19	12	34



CAUTION !!
Overhead High Voltage Transmission Line.

CAUTION !!
The "Flood Protection" system shall be preserved at all times. This may require temporary earth cofferdams around breach points in the levee system. See Sheet for detail phasing for floodway modification.

NOTE:
The Existing 24" and 16" Water Lines to be relocated by the owner prior to any channel work in conformance with U.S. Corp. of Engineer's requirements for floodway crossing.

CHANNEL IMPROVEMENT CURVE DATA (ARC DEF)

#	C1	C2	C3
Δ	135°59'27"	37°52'30"	11°57'09.6"
D	81°51'04"	17°05'40"	1°29'58"
T	173.22'	115.00'	400.00'
R	70.00'	335.17'	3,820.93'
L	166.14'	221.56'	797.10'
E	116.83'	19.18'	20.88'

See Sheet 13 for Floodway Plan II.
See Sheet 14 for Typical Floodway Sections.
See Sheet 15 for Floodway Profiles.
See Sheet 10, 11 for P.O.T.'s and B.M.'s on Project.
See Sheet for Notes.

CITY OF WICHITA

MAPLE STREET BRIDGE FLOODWAY PLAN I

CITY OF WICHITA PROJ. NO. 472-76-245-81719-000-000-001

BOOKER / FREUND
Engineers Architects Planners

SCALE: Noted DATE: _____ DWG. NO. K-9280-02

SURV. PLOT CADDO DES. R.C. DR. G.R.H. TR. CKD. APP.

See Sheet 13 for Floodway Plan II