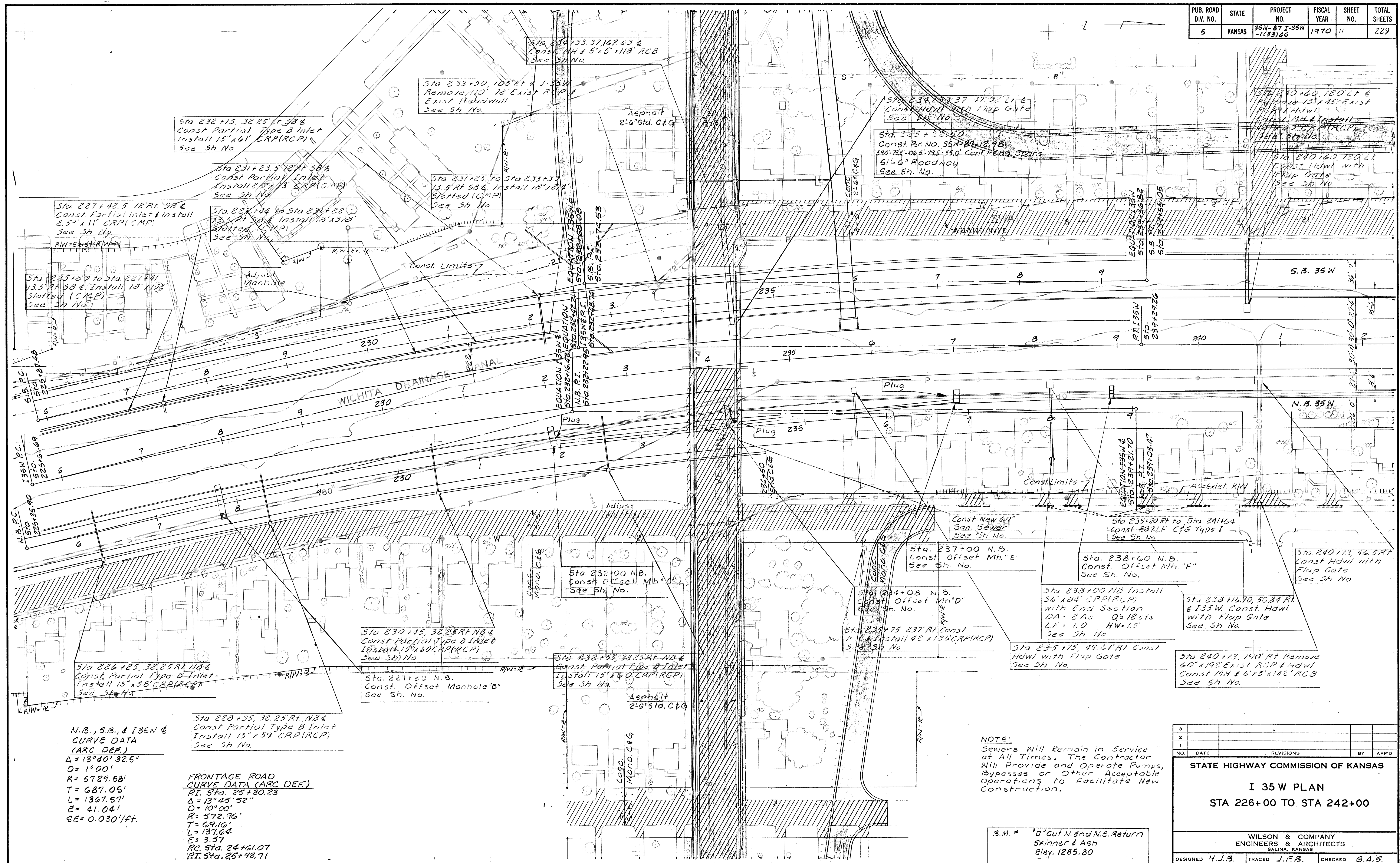


PUB. ROAD DIV. NO.	STATE	PROJECT NO.	FISCAL YEAR	SHEET NO.	TOTAL SHEETS
5	KANSAS	35N-87 I-35W -113346	1970	11	229



N.B., S.B., & 136N & CURVE DATA (ARC DEF.)
 $\Delta = 13^{\circ}40'32.5''$
 $D = 1^{\circ}00'$
 $R = 5729.58'$
 $T = 687.05'$
 $L = 1367.57'$
 $E = 41.04'$
 $SE = 0.030'/ft.$

FRONTAGE ROAD CURVE DATA (ARC DEF.)
 RT. Sta. 25+30.23
 $\Delta = 13^{\circ}45'52''$
 $D = 10^{\circ}00'$
 $R = 572.76'$
 $T = 69.16'$
 $L = 137.64'$
 $E = 3.57'$
 PC. Sta. 24+61.07
 PT. Sta. 25+98.71

NOTE:
 Sewers Will Remain in Service at All Times. The Contractor Will Provide and Operate Pumps, Bypasses or Other Acceptable Operations to Facilitate New Construction.

3.M. # "d" cut N. end N.B. Return Skinner & Ash Eley. 1285.80

NO.	DATE	REVISIONS	BY	APP'D
3				
2				
1				

STATE HIGHWAY COMMISSION OF KANSAS

I 35 W PLAN
 STA 226+00 TO STA 242+00

WILSON & COMPANY
 ENGINEERS & ARCHITECTS
 SALINA, KANSAS

DESIGNED 4.J.B. TRACED J.F.B. CHECKED G.A.S.