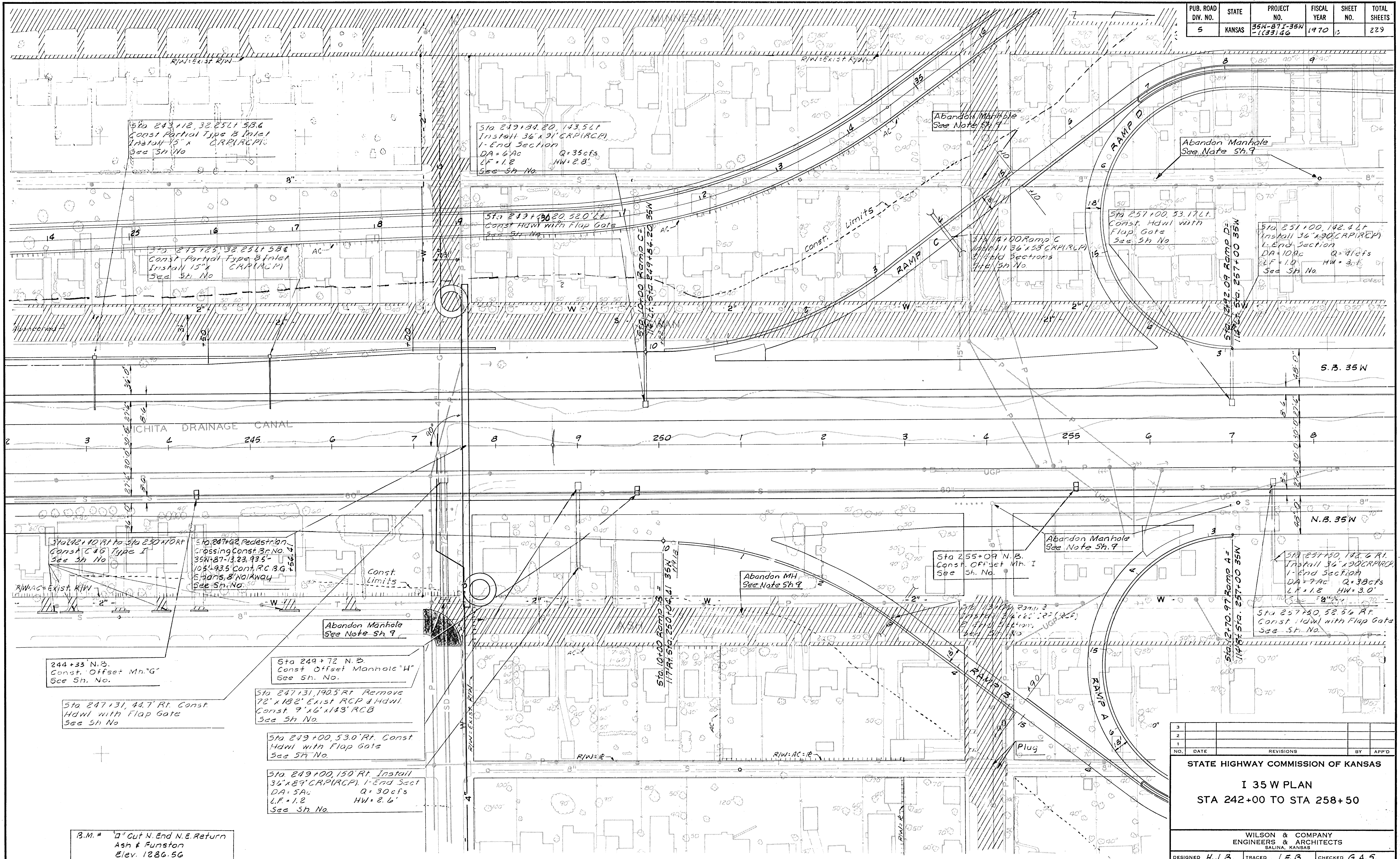


PUB. ROAD DIV. NO.	STATE	PROJECT NO.	FISCAL YEAR	SHEET NO.	TOTAL SHEETS
5	KANSAS	354-27-35W-1(23)46	1970	12	229



Sta 243+12, 32.25 Lt 53.6
Const Partial Type B Inlet
Install 15" x CRP(RCP)
See Sh No

Sta 249+31.20, 143.5 Lt
Install 36" x 31" CRP(RCP)
1-End Section
DA=6'Ac Q=35cfs
LF=1.2 HW=2.8'
See Sh No

Sta 245+25, 33.25 Lt 53.6
Const Partial Type B Inlet
Install 15" x CRP(RCP)
See Sh No

Sta 243+30.20, 52.0 Lt
Const Hdwl with Flap Gate
See Sh No

Abandon Manhole
See Note Sh 9

Abandon Manhole
See Note Sh 9

Sta 251+00, 53.17 Lt
Const Hdwl with Flap Gate
See Sh No

Sta 251+00, 142.4 Lt
Install 36" x 30" CRP(RCP)
1-End Section
DA=10'Ac Q=41cfs
LF=1.0 HW=3.0'
See Sh No

Sta 242+10 Rt to Sta 250+10 Rt
Const C#6 Type I
See Sh No

Sta 247+42, Pedestrian
Crossing Const. No.
35W+87-13, 23, 93.5-
105, 435 Const. R.C.B.G.
E. Signs, 8' No. Away
See Sh No

Abandon Manhole
See Note Sh 9

Sta 255+09 N.B.
Const. Offset Mn. I
See Sh No.

Abandon Manhole
See Note Sh 9

Sta 257+50, 142.6 Rt
Install 36" x 30" CRP(RCP)
1-End Section
DA=7'Ac Q=38cfs
LF=1.2 HW=3.0'
See Sh No

Sta 257+50, 52.56 Rt
Const Hdwl with Flap Gate
See Sh No

244+33 N.B.
Const. Offset Mn. G
See Sh. No.

Sta 249+72 N.B.
Const. Offset Manhole "H"
See Sh. No.

Sta 247+31, 190.5 Rt Remove
72" x 182" Exist RCP & Hdwl
Const. 9' x 16" x 143' RCB
See Sh No.

Sta 249+00, 53.0 Rt. Const
Hdwl with Flap Gate
See Sh No.

Sta 249+00, 150 Rt. Install
36" x 29" CRP(RCP). 1-End Sect
DA=5'Ac Q=30cfs
LF=1.2 HW=2.6'
See Sh No.

B.M. # 7' Out N. End N.E. Return
Ash & Funston
Elev. 1286.56

3			
2			
1			
NO.	DATE	REVISIONS	BY APPD

STATE HIGHWAY COMMISSION OF KANSAS

I 35 W PLAN
STA 242+00 TO STA 258+50

WILSON & COMPANY
ENGINEERS & ARCHITECTS
BALINA, KANSAS

DESIGNED H.J.B. TRACED J.F.B. CHECKED G.A.S.