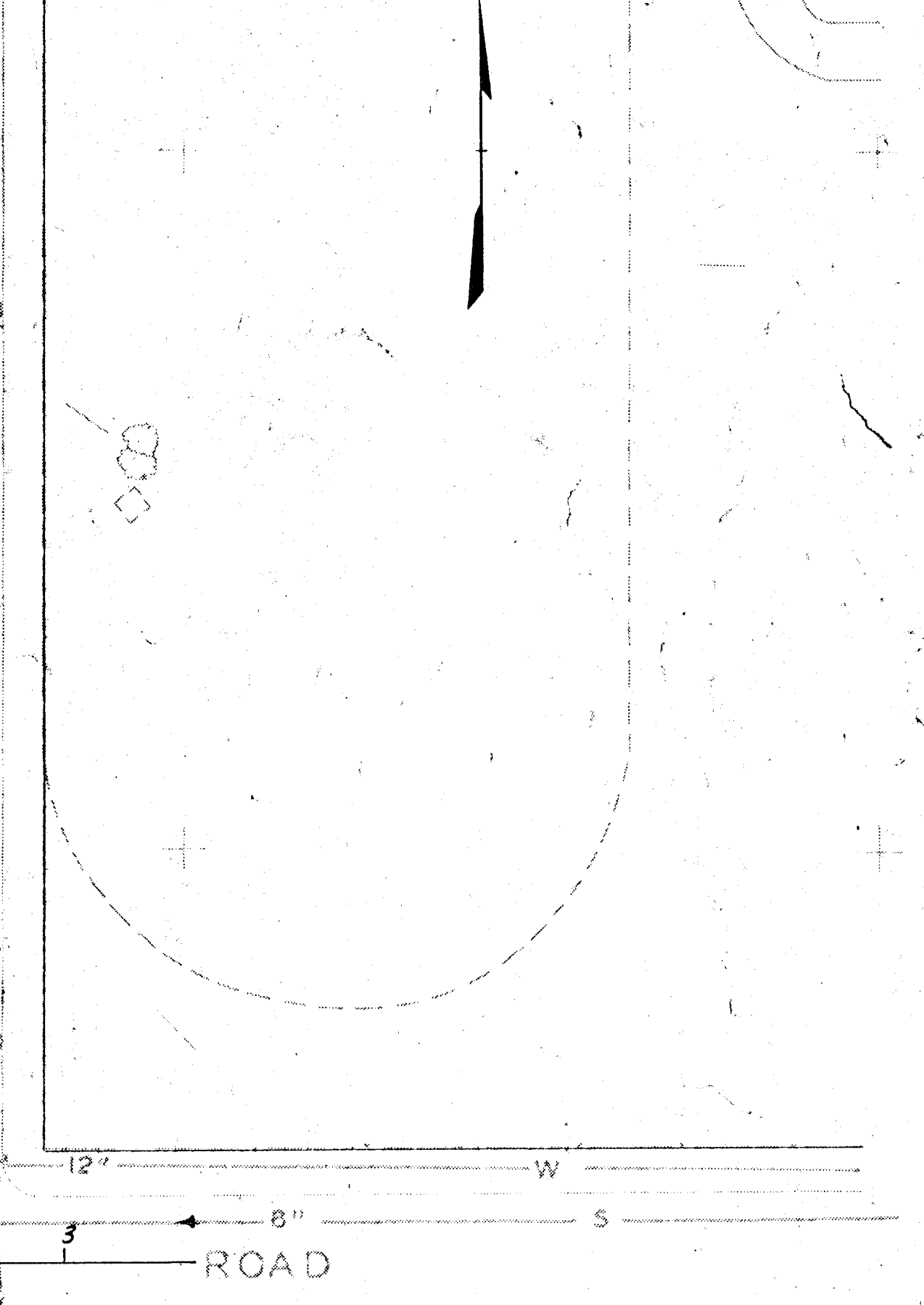
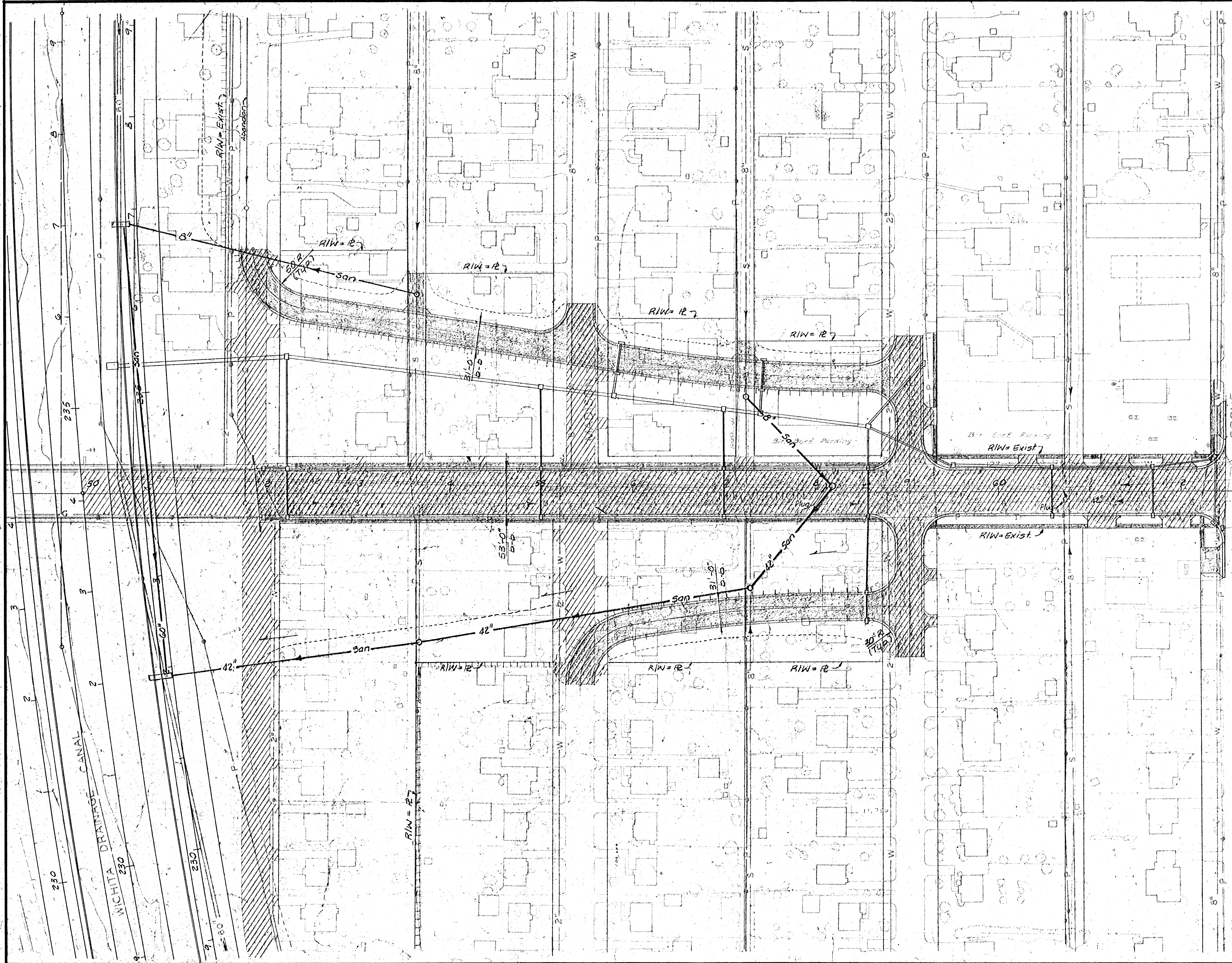


PUB. ROAD DIV. NO.	STATE	PROJECT NO.	FISCAL YEAR	SHEET NO.	TOTAL SHEETS
5	KANSAS	*		26	

# 36W-87 I-35W-1(33) 46



3					
2					
1					
NO.	DATE	REVISIONS	BY	APP'D	
STATE HIGHWAY COMMISSION OF KANSAS					
MT. VERNON ROAD PLAN					
STA. 50+00 TO STA. 63+00					
WILSON & COMPANY ENGINEERS & ARCHITECTS SALINA, KANSAS					
DESIGNED	TRACED	J. F. B.	CHECKED		