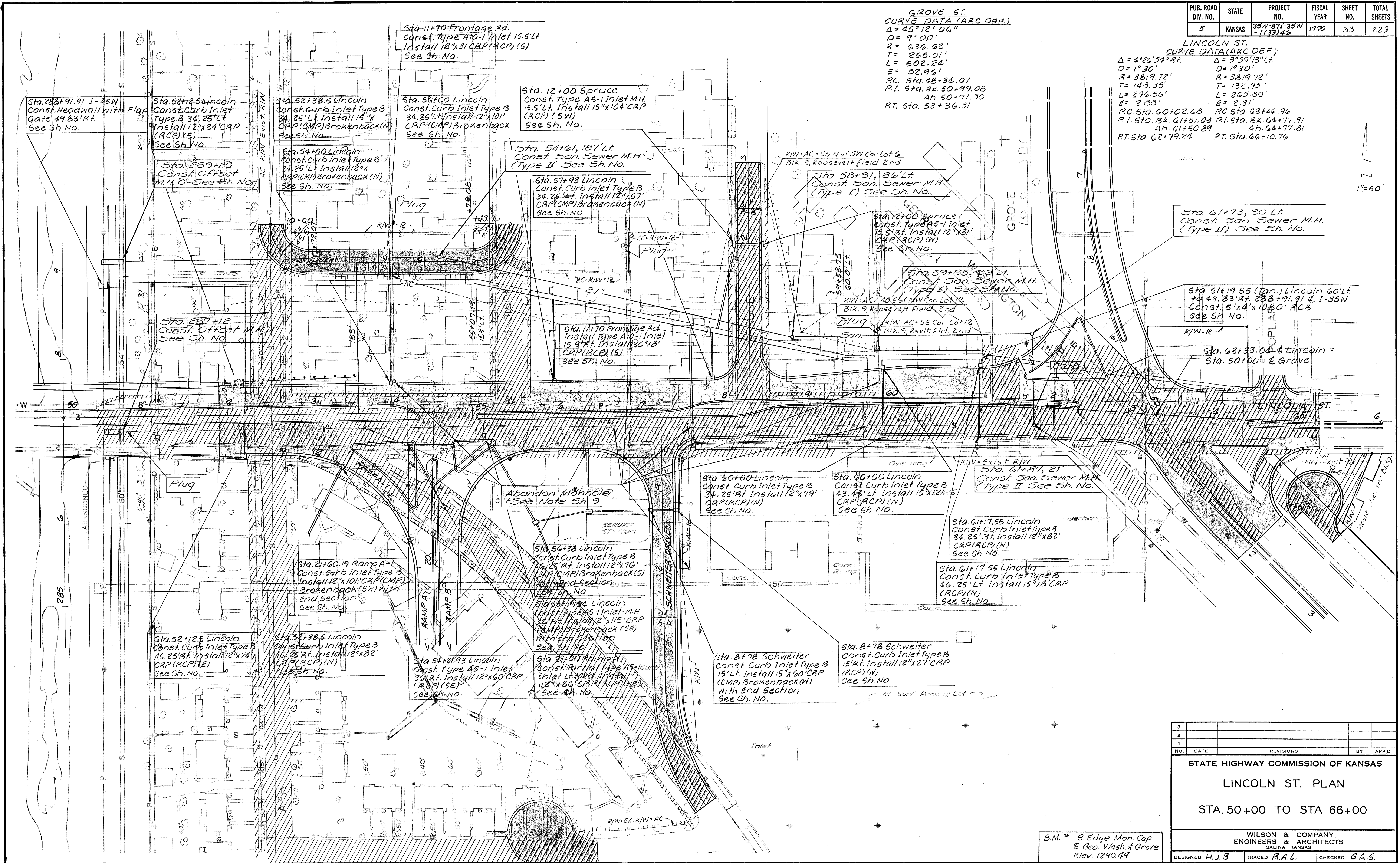
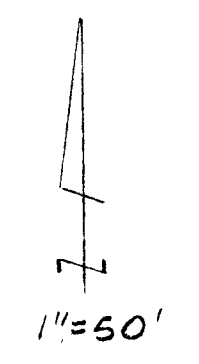


PUB. ROAD DIV. NO.	STATE	PROJECT NO.	FISCAL YEAR	SHEET NO.	TOTAL SHEETS
5	KANSAS	35W-371-35W-1(33)46	1970	33	229

GROVE ST.  
 CURVE DATA (ARC DEF.)  
 $\Delta = 45^\circ 12' 06''$   
 $D = 9^\circ 00'$   
 $R = 636.62'$   
 $T = 265.01'$   
 $L = 502.24'$   
 $E = 52.96'$   
 P.C. Sta. 48+34.07  
 P.T. Sta. 3x. 50+99.08  
 Ah. 50+71.30  
 P.T. Sta. 53+36.31

LINCOLN ST.  
 CURVE DATA (ARC DEF.)  
 $\Delta = 4^\circ 26' 54''$   
 $D = 1^\circ 30'$   
 $R = 3819.72'$   
 $T = 148.35'$   
 $L = 296.36'$   
 $E = 2.88'$   
 P.C. Sta. 60+02.63  
 P.T. Sta. 3x. 61+51.03  
 Ah. 61+50.89  
 P.T. Sta. 62+99.24



Sta. 288+91.91 I-35W  
 Const. Headwall with Flag  
 Gate 49.83'Rt.  
 See Sh. No.

Sta. 52+12.5 Lincoln  
 Const. Curb Inlet Type B  
 34.25' Lt. Install 12"x24" CRP  
 (RCP)(E)  
 See Sh. No.

Sta. 52+38.5 Lincoln  
 Const. Curb Inlet Type B  
 34.25' Lt. Install 12"x24" CRP  
 (CMP) Brokenback (N)  
 See Sh. No.

Sta. 11+70 Frontage Rd.  
 Const. Type A10-1 Inlet 15.5' Lt.  
 Install 18"x31" CRP (RCP) (S)  
 See Sh. No.

Sta. 56+00 Lincoln  
 Const. Curb Inlet Type B  
 34.25' Lt. Install 12"x10" CRP  
 (CMP) Brokenback  
 See Sh. No.

Sta. 12+00 Spruce  
 Const. Type A5-1 Inlet M.H.  
 15.5' Lt. Install 15"x10" CAP  
 (RCP) (SW)  
 See Sh. No.

Sta. 54+61, 187' Lt.  
 Const. San. Sewer M.H.  
 (Type II) See Sh. No.

Sta. 57+93 Lincoln  
 Const. Curb Inlet Type B  
 34.25' Lt. Install 12"x57" CAP  
 (CMP) Brokenback (N)  
 See Sh. No.

Sta. 58+91, 86' Lt.  
 Const. San. Sewer M.H.  
 (Type I) See Sh. No.

Sta. 12+00 Spruce  
 Const. Type A5-1 Inlet  
 13.5' Lt. Install 12"x31" CRP  
 (RCP) (N)  
 See Sh. No.

Sta. 59+95, 83' Lt.  
 Const. San. Sewer M.H.  
 (Type I) See Sh. No.

Sta. 61+73, 90' Lt.  
 Const. San. Sewer M.H.  
 (Type II) See Sh. No.

Sta. 61+19.55 (Tan.) Lincoln 60' Lt.  
 to 49.83' Rt. 288+91.91 E I-35W  
 Const. 5'x4'x10.80' RCB  
 See Sh. No.

Sta. 63+33.04 E Lincoln =  
 Sta. 50+00 E Grove

Sta. 287+12  
 Const. Offset M.H.  
 See Sh. No.

Sta. 11+70 Frontage Rd.  
 Install Type A10-1 Inlet  
 15.5' Lt. Install 30"x8" CAP  
 (RCP) (S)  
 See Sh. No.

Sta. 60+00 Lincoln  
 Const. Curb Inlet Type B  
 34.25' Lt. Install 12"x79" CRP  
 (RCP) (N)  
 See Sh. No.

Sta. 60+00 Lincoln  
 Const. Curb Inlet Type B  
 43.45' Lt. Install 15"x28" CRP  
 (RCP) (N)  
 See Sh. No.

Sta. 61+37, 21'  
 Const. San. Sewer M.H.  
 (Type II) See Sh. No.

Sta. 61+7.55 Lincoln  
 Const. Curb Inlet Type B  
 34.25' Lt. Install 12"x82" CRP  
 (RCP) (N)  
 See Sh. No.

Sta. 61+7.55 Lincoln  
 Const. Curb Inlet Type B  
 46.25' Lt. Install 15"x8" CAP  
 (RCP) (N)  
 See Sh. No.

Sta. 52+12.5 Lincoln  
 Const. Curb Inlet Type B  
 46.25' Lt. Install 12"x24" CRP  
 (RCP) (E)  
 See Sh. No.

Sta. 52+38.5 Lincoln  
 Const. Curb Inlet Type B  
 46.25' Lt. Install 12"x82" CRP  
 (RCP) (N)  
 See Sh. No.

Sta. 54+93 Lincoln  
 Const. Type A5-1 Inlet  
 30' Lt. Install 12"x60" CRP  
 (RCP) (SE)  
 See Sh. No.

Sta. 21+00 Ramp A  
 Const. Type A5-1 Inlet  
 15' Lt. Install 12"x60" CRP  
 (RCP) (N)  
 See Sh. No.

Sta. 8+78 Schweiter  
 Const. Curb Inlet Type B  
 15' Lt. Install 15"x60" CAP  
 (CMP) Brokenback (W)  
 With End Section  
 See Sh. No.

Sta. 8+78 Schweiter  
 Const. Curb Inlet Type B  
 15' Lt. Install 12"x27" CAP  
 (RCP) (W)  
 See Sh. No.

NO.	DATE	REVISIONS	BY	APP'D
3				
2				
1				

STATE HIGHWAY COMMISSION OF KANSAS  
 LINCOLN ST. PLAN  
 STA. 50+00 TO STA. 66+00

B.M. # S. Edge Mon. Cap  
 E Geo. Wash. & Grove  
 Elev. 1290.49

WILSON & COMPANY,  
 ENGINEERS & ARCHITECTS  
 SALINA, KANSAS  
 DESIGNED H.J.B. TRACED R.A.L. CHECKED G.A.S.