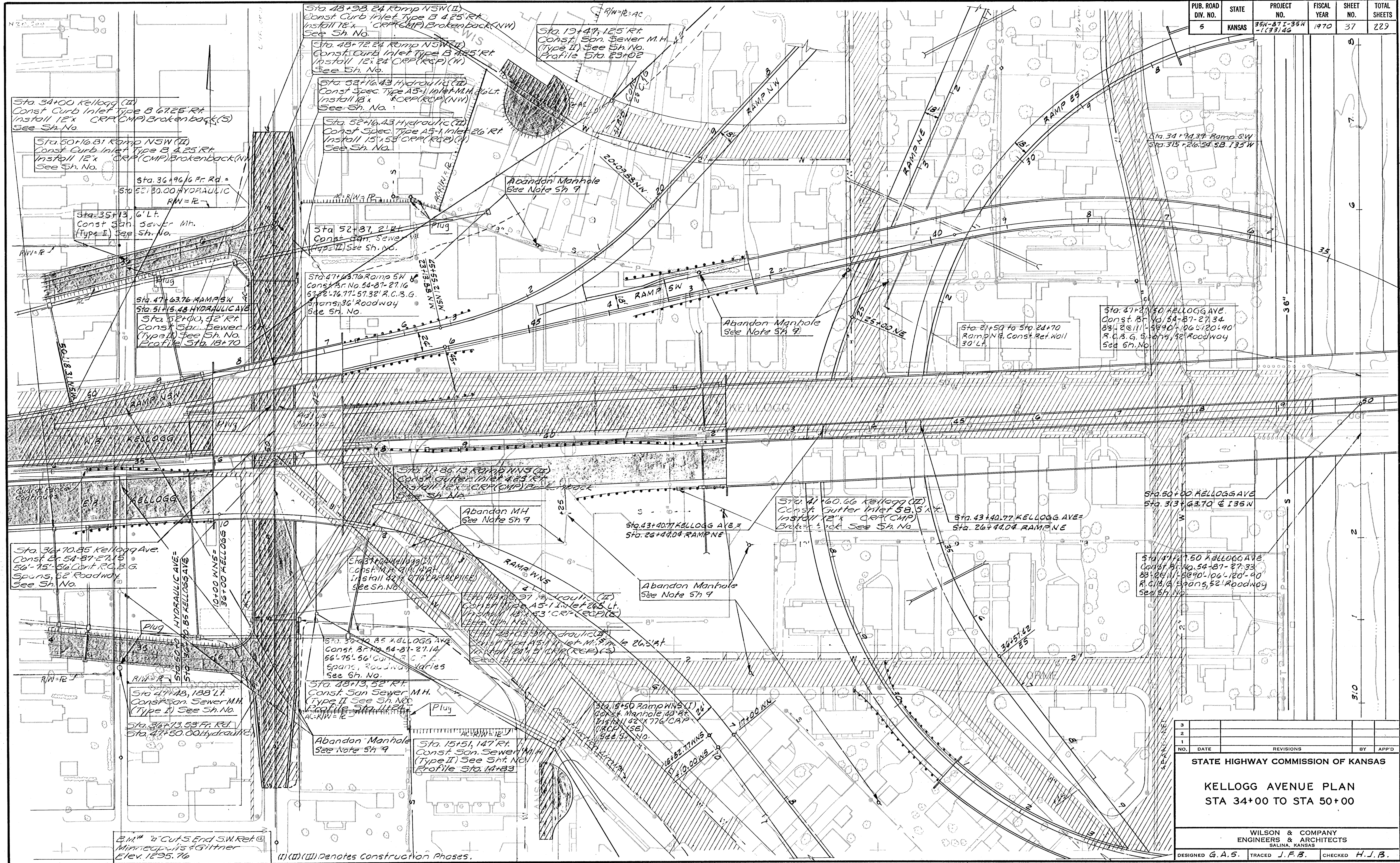


PUB. ROAD DIV. NO.	STATE	PROJECT NO.	FISCAL YEAR	SHEET NO.	TOTAL SHEETS
5	KANSAS	35W-87I-35W-1(33)46	1970	37	229



Sta. 34+00 Kellogg (II)
Const. Curb Inlet Type B 67.25' RT
Install 12" CRP (CMP) Broken Back (S)
See Sh. No.

Sta. 50+16.81 Ramp NSW (II)
Const. Curb Inlet Type B 4.25' RT
Install 12" CRP (CMP) Broken Back (S)
See Sh. No.

Sta. 36+19.6 Fr. Rd. =
Sta. 52+30.00 HYDRAULIC
RW=R

Sta. 35+13, 6' L.T.
Const. San. Sewer M.H.
(Type I) See Sh. No.

Sta. 47+63.76 RAMP SW
Sta. 51+15.48 HYDRAULIC AVE
Sta. 52+00, 52' RT
Const. San. Sewer
(Type II) See Sh. No.
Profile Sta. 18+70

Sta. 36+10.85 Kellogg Ave.
Const. E. 54-87-27.15
56'-15" 56' Cont. R.C.B.G.
Spans, 52' Roadway
See Sh. No.

Sta. 36+13.53 Fr. Rd.
Sta. 47+50.00 Hydraulic

Sta. 47+18, 188' L.T.
Const. San. Sewer M.H.
(Type I) See Sh. No.

Sta. 48+13, 52' RT
Const. San. Sewer M.H.
(Type II) See Sh. No.

Sta. 15+51, 147' RT
Const. San. Sewer M.H.
(Type II) See Sh. No.
Profile Sta. 14+83

Sta. 11+35.13 Ramp NWS (II)
Const. Gutter Inlet 42.5' RT
Install 12" CRP (CMP) Broken Back (S)
See Sh. No.

Sta. 41+40.66 Kellogg (II)
Const. Gutter Inlet 58.5' RT
Install 12" CRP (CMP) Broken Back (S)
See Sh. No.

Sta. 43+40.77 KELLOGG AVE =
Sta. 26+44.04 RAMP NE

Sta. 48+98.24 Ramp NSW (II)
Const. Curb Inlet Type B 4.25' RT
Install 12" CRP (CMP) Broken Back (NW)
See Sh. No.

Sta. 48+72.24 Ramp NSW (II)
Const. Curb Inlet Type B 4.25' RT
Install 12" CRP (CMP) Broken Back (W)
See Sh. No.

Sta. 52+16.43 Hydraulic (II)
Const. Spec. Type A5-1 Inlet 26' LT
Install 18" CRP (CMP) Broken Back (NW)
See Sh. No.

Sta. 52+16.43 Hydraulic (II)
Const. Spec. Type A5-1 Inlet 26' RT
Install 15" x 58" CRP (CMP) Broken Back (W)
See Sh. No.

Sta. 47+13.76 Ramp SW
Const. R. No. 54-87-27.16
57'-2" 76'-11" 57'-32" R.C.B.G.
Spans, 36' Roadway
See Sh. No.

Sta. 41+40.66 Kellogg (II)
Const. Gutter Inlet 58.5' RT
Install 12" CRP (CMP) Broken Back (S)
See Sh. No.

Sta. 43+40.77 KELLOGG AVE =
Sta. 26+44.04 RAMP NE

Sta. 41+40.66 Kellogg (II)
Const. Gutter Inlet 58.5' RT
Install 12" CRP (CMP) Broken Back (S)
See Sh. No.

Sta. 43+40.77 KELLOGG AVE =
Sta. 26+44.04 RAMP NE

Sta. 41+40.66 Kellogg (II)
Const. Gutter Inlet 58.5' RT
Install 12" CRP (CMP) Broken Back (S)
See Sh. No.

Sta. 43+40.77 KELLOGG AVE =
Sta. 26+44.04 RAMP NE

Sta. 41+40.66 Kellogg (II)
Const. Gutter Inlet 58.5' RT
Install 12" CRP (CMP) Broken Back (S)
See Sh. No.

NO.	DATE	REVISIONS	BY	APP'D
1				
2				
3				

STATE HIGHWAY COMMISSION OF KANSAS

KELLOGG AVENUE PLAN
STA 34+00 TO STA 50+00

WILSON & COMPANY
ENGINEERS & ARCHITECTS
SALINA, KANSAS

DESIGNED G. A. S. TRACED J. F. B. CHECKED H. J. B.

2.M. 4' Cut S. End S.W. Ret. @
Minneapolis & Giltner
Elev. 1235.76

(I)(II)(III) Denotes Construction Phases.