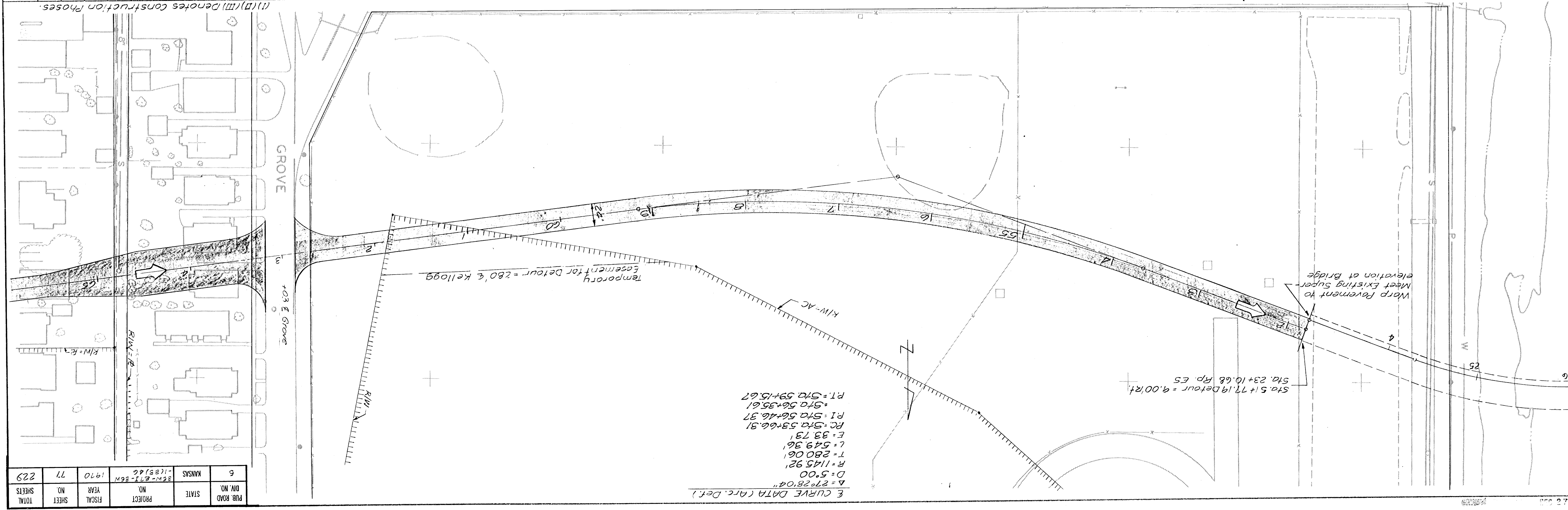
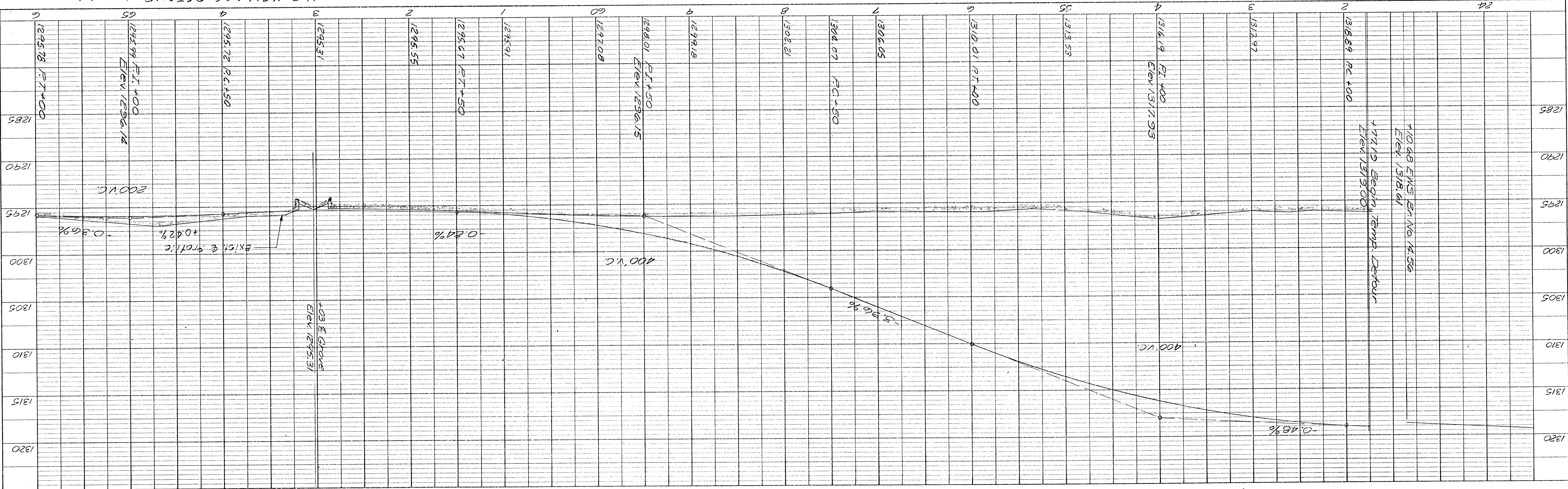


PROFILE		DATE
NO.	BY	
DATE		
STRUCTURE		
PLAN		
NOTED		
NOTED		
NOTED		

PLAN		DATE
NO.	BY	
DATE		
STRUCTURE		
PLAN		
NOTED		
NOTED		
NOTED		



PUB. ROAD NO.	6
STATE	KANSAS
PROJECT NO.	351-271-26N
FISCAL YEAR	1970
SHEET NO.	77
TOTAL SHEETS	229

E CURVE DATA (Arc. Def.)
 $\Delta = 270.28'$
 $D = 5.00'$
 $R = 1145.92'$
 $T = 280.06'$
 $L = 549.36'$
 $E = 83.73'$
 $RC = 53+66.31$
 $P1 = 56+46.37$
 $P2 = 56+35.61$
 $P3 = 59+15.67$

(1)(D)(M) Denotes Construction Phases

M.B. KELLOGG DETOUR 543014

PLATE 1 PLAN - PROFILE P. R. STANDARDS
 ENGINEER: GEORGE W. BROWN
 CHICAGO, ILL. U.S.A.