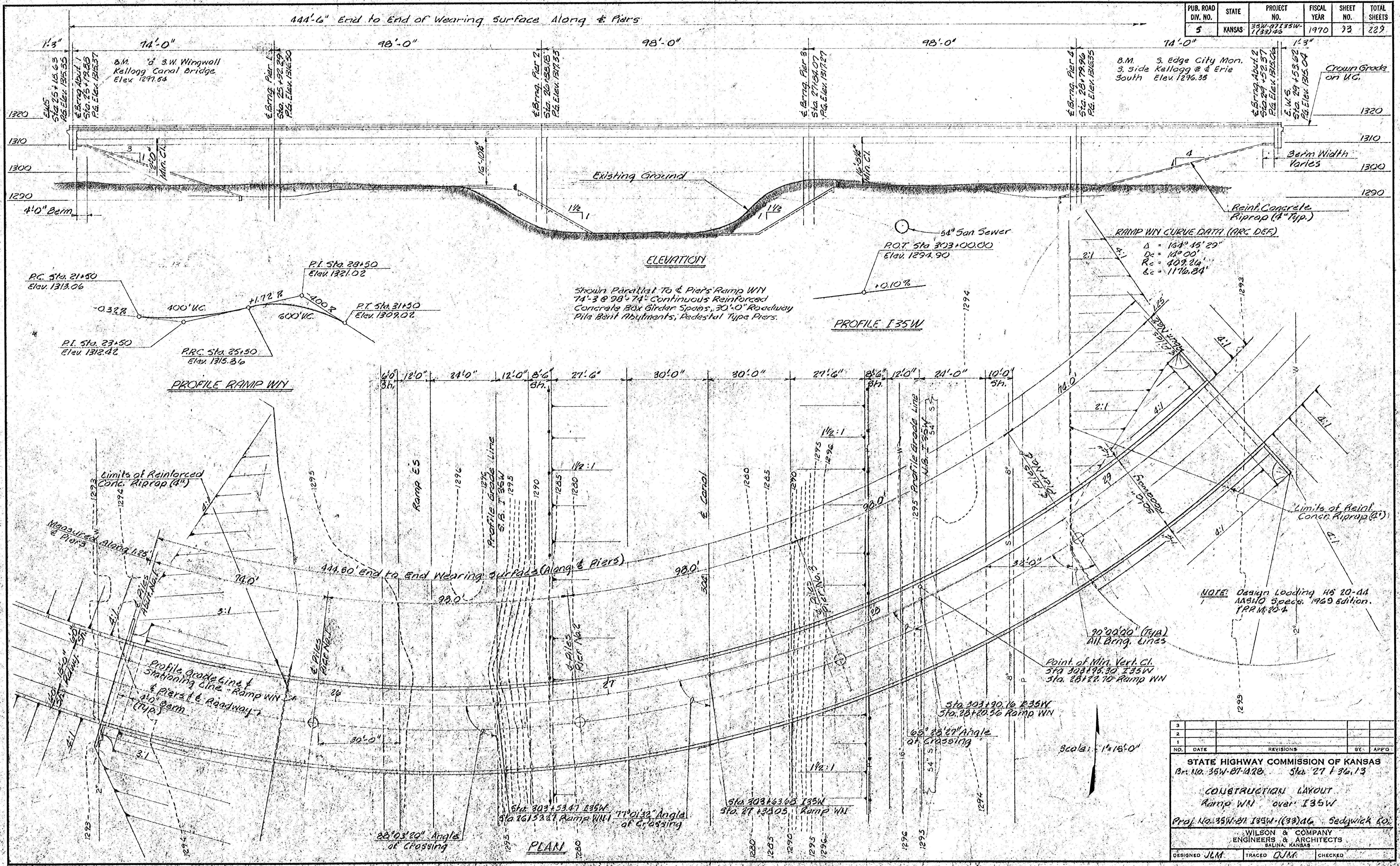


| PUB. ROAD DIV. NO. | STATE | PROJECT NO. | FISCAL YEAR | SHEET NO. | TOTAL SHEETS |
|--------------------|--------|--------------------|-------------|-----------|--------------|
| 5 | KANSAS | 35W-87135W-1733-44 | 1970 | 23 | 229 |



NOTE: Design Loading HS 20-44
AASHTO Specs. 1969 edition.
PRR 14-20-4

| NO. | DATE | REVISIONS | BY | APPRO. |
|-----|------|-----------|----|--------|
| 1 | | | | |
| 2 | | | | |
| 3 | | | | |

STATE HIGHWAY COMMISSION OF KANSAS
Br. No. 35W-871470 Sta. 27+36.13

CONSTRUCTION LAYOUT
Ramp WY over I 35W

Proj. No. 35W-87135W-(33)46 Sedgwick Co.

WILSON & COMPANY
ENGINEERS & ARCHITECTS
SALINA, KANSAS

DESIGNED JLM TRACED D/M CHECKED

DEC 27 1971