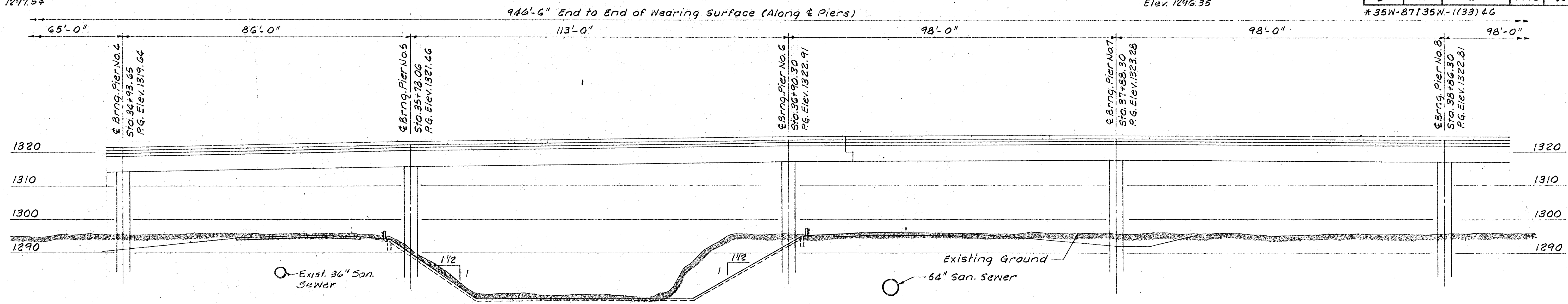


B.M. "3" S.W. Wingwall
Kellogg Canal Bridge
Elev. 1297.54

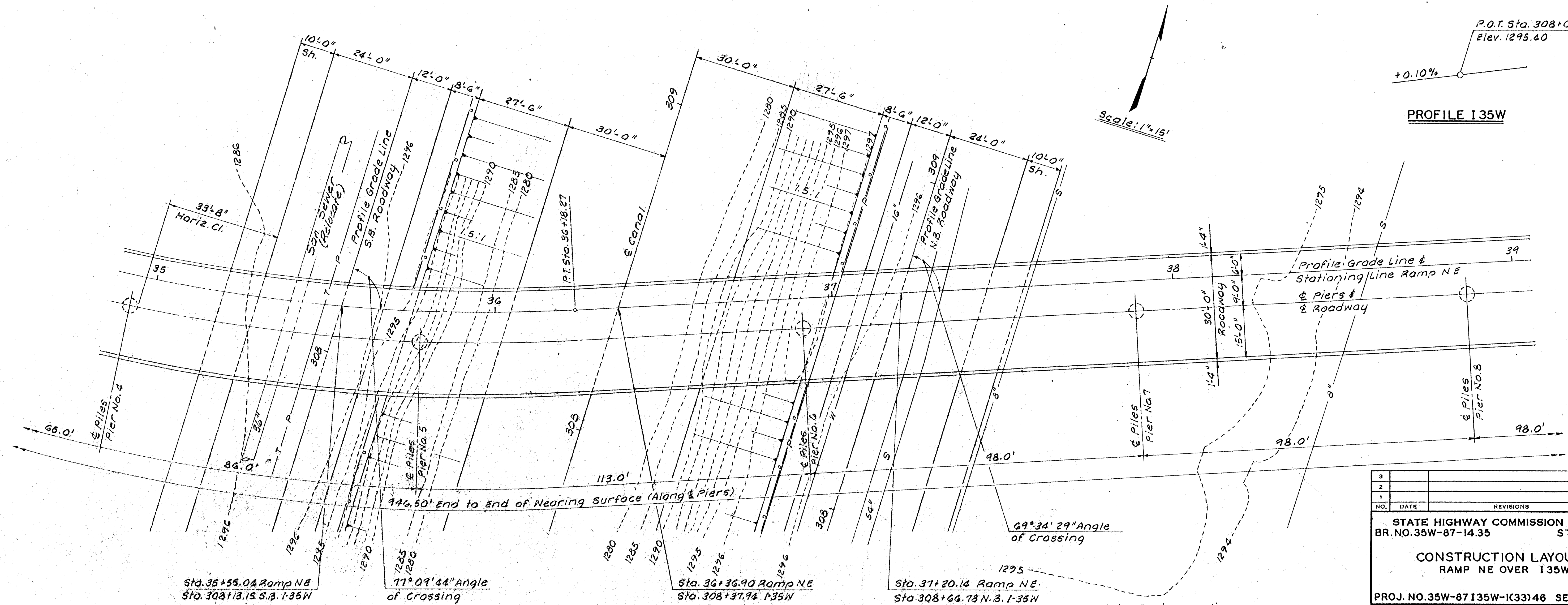
B.M. S. Edge City Mon.
S. Side Kellogg @ Erie South
Elev. 1296.35

PUB. ROAD DIV. NO.	STATE	PROJECT NO.	FISCAL YEAR	SHEET NO.	TOTAL SHEETS
5	KANSAS	*	1970	95	229

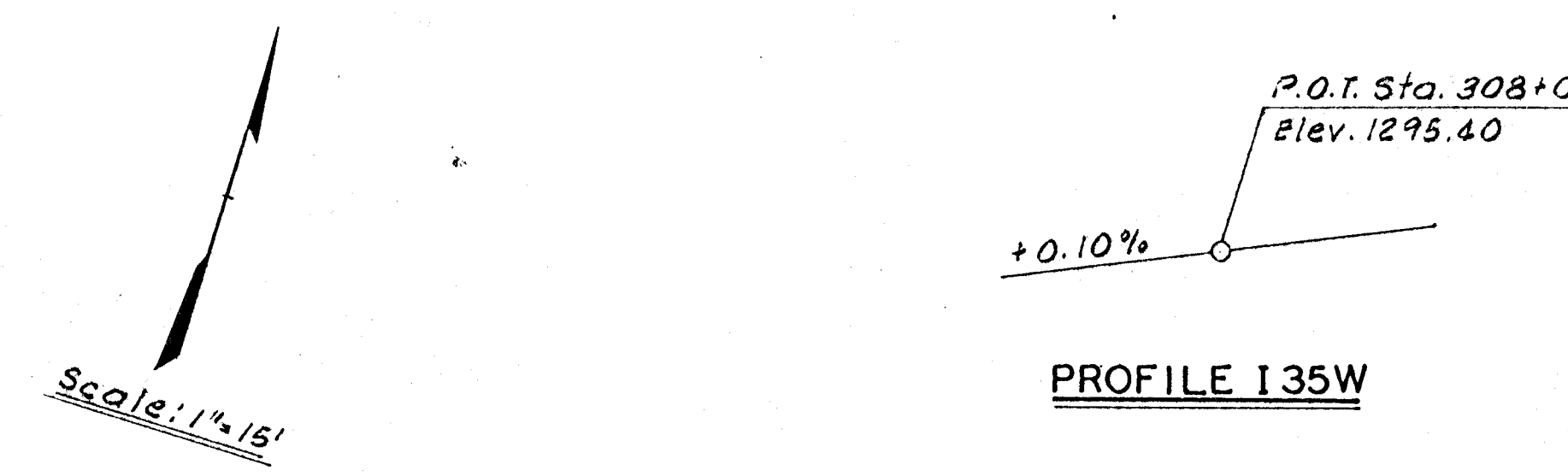
*35W-87(35W-1(33)46



ELEVATION



PLAN



PROFILE I 35W

Note: Design Loading HS 20-44
AASHTO Spcs. 1969 Edition
and P.P.M. 20-4

NO.	DATE	REVISIONS	BY	APP'D
3				
2				
1				

STATE HIGHWAY COMMISSION OF KANSAS
BR. NO. 35W-87-14.35 STA. 35+82.04

**CONSTRUCTION LAYOUT
RAMP NE OVER I 35W**

PROJ. NO. 35W-87(35W-1(33)46 SEDGWICK CO.

WILSON & COMPANY
ENGINEERS & ARCHITECTS
SALINA, KANSAS

DESIGNED L.C.C. TRACED J.F.B. CHECKED