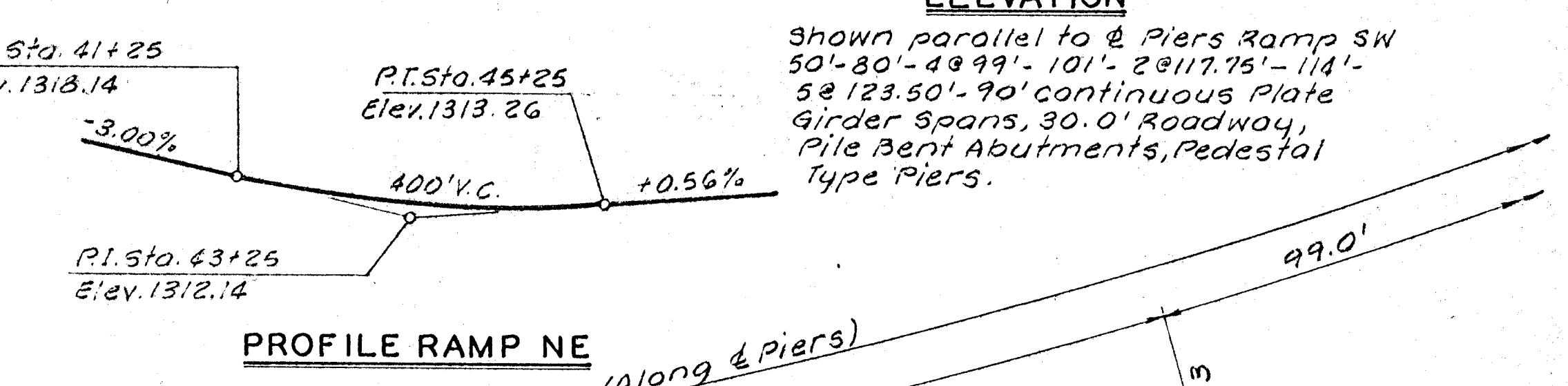
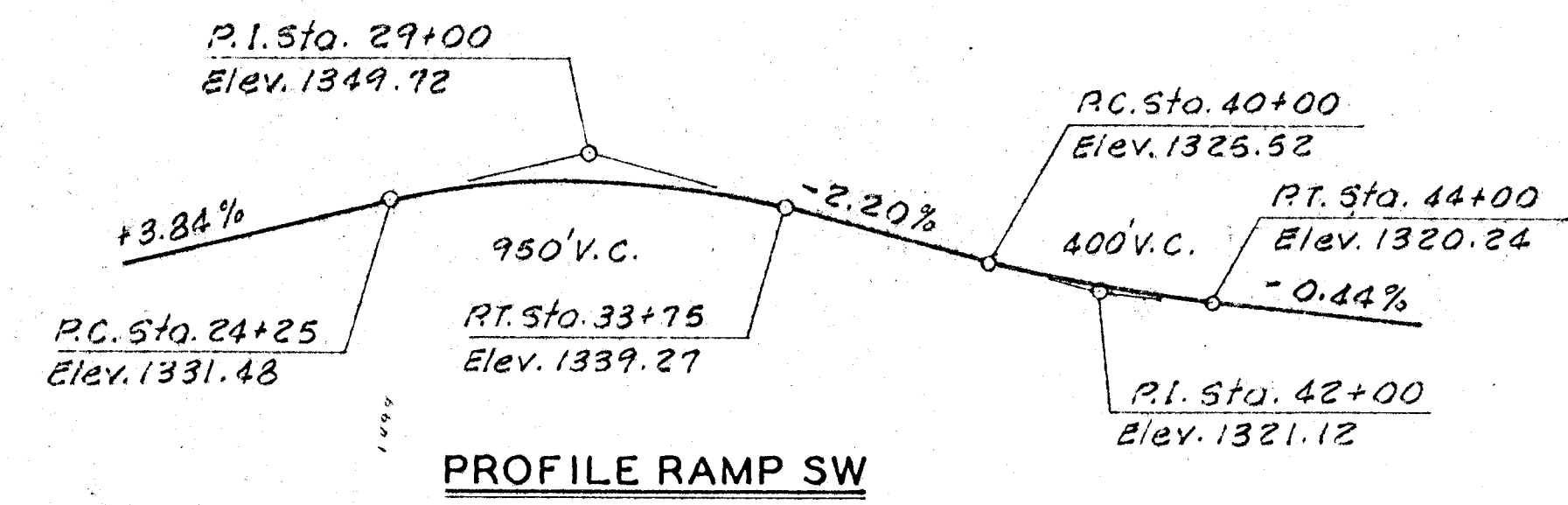
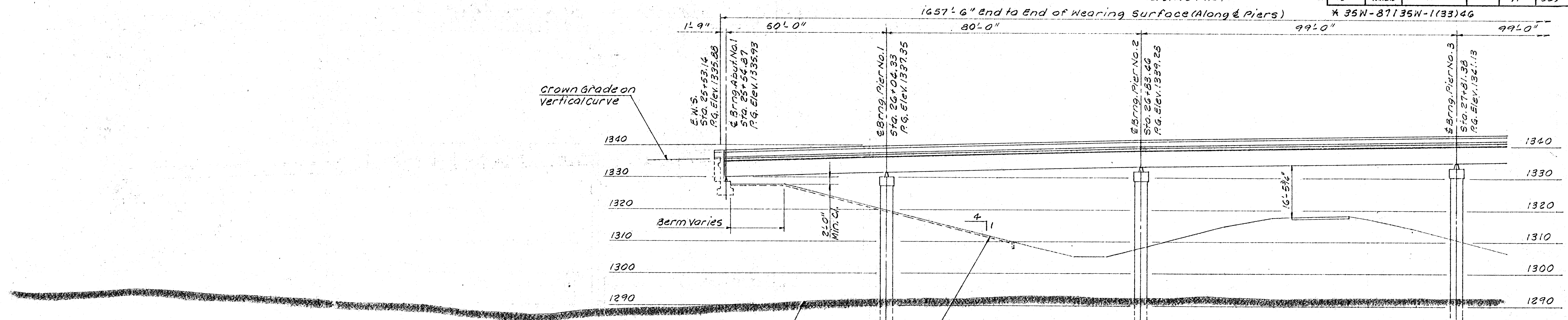


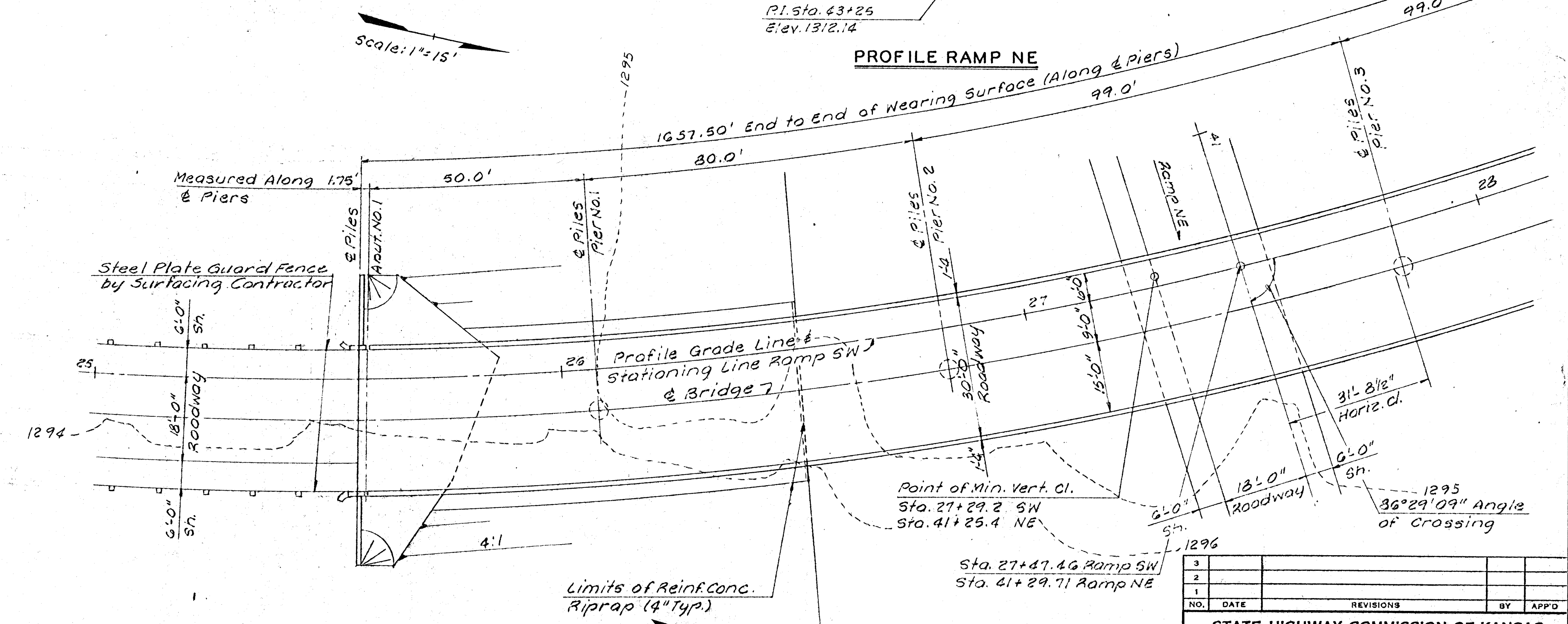
B.M. "a" Cut E. End NE Ref.  
at Morris & Minnesota  
Elev. 1292.51

B.M. "a" Cut N.W. Corner S.W. Wingwall  
Kellogg Canal Bridge  
Elev. 1297.54

PUB. ROAD DIV. NO.	STATE	PROJECT NO.	FISCAL YEAR	SHEET NO.	TOTAL SHEETS
5	KANSAS	*		97	229



**ELEVATION**  
Shown parallel to & Piers Ramp SW  
50'-80'-48'99'-101'-28'117.75'-111'-  
58'123.50'-90' continuous Plate  
girder spans, 30.0' Roadway,  
Pile Bent Abutments, Pedestal  
Type Piers.



**RAMP SW CURVE DATA (ARC)**  
 $\Delta = 124^\circ 17' 47''$   
 $Dc = 7^\circ 0' 0''$   
 $Rc = 818.51'$   
 $Lc = 1775.66'$

**PLAN**

Note: Design Loading HS 20-44  
AASHTO Spec's. 1969 Edition  
& P.P.M. 20-4.

NO.	DATE	REVISIONS	BY	APPD
3				
2				
1				

STATE HIGHWAY COMMISSION OF KANSAS  
BR. NO. 35W-87-14.46 STA. 33+89.13

**CONSTRUCTION LAYOUT**  
RAMP SW OVER I 35W

PROJ. NO. 35W-87135W-(133)46 SEDGWICK CO.

WILSON & COMPANY  
ENGINEERS & ARCHITECTS  
SALINA, KANSAS

DESIGNED L.C.C. TRACED J.F.B. CHECKED J.L.M.