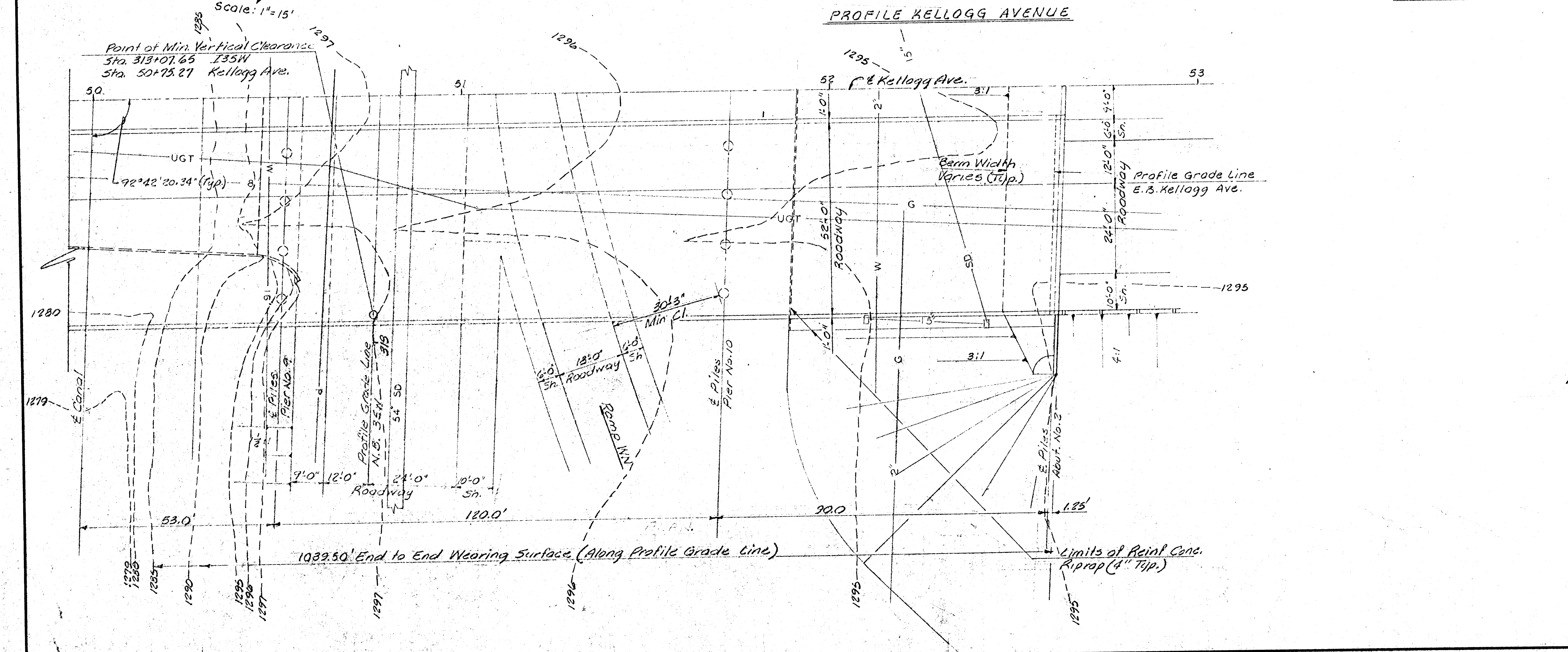
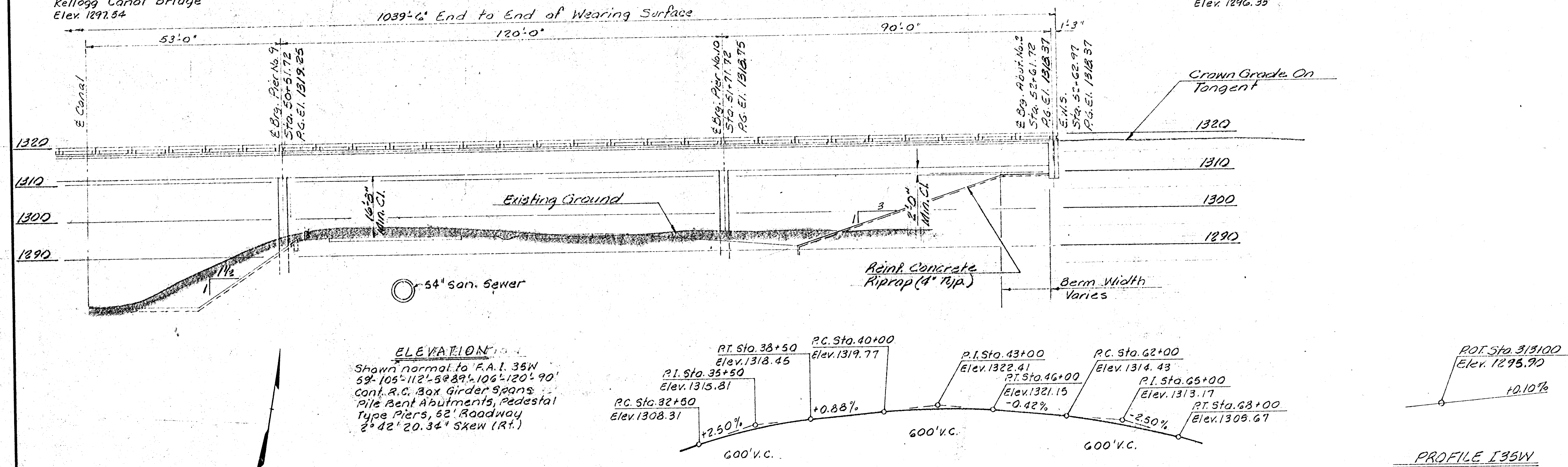


PUB. ROAD DIV. NO.	STATE	PROJECT NO.	FISCAL YEAR	SHEET NO.	TOTAL SHEETS
5	KANSAS	35W-87I-35W-1(33)46	1970	109	229

B.M. "a" S.W. Wingwall
Kellogg Canal Bridge
Elev. 1297.54

B.M. S. Edge City Mon.
Side Kellogg @ Erie South
Elev. 1296.35



Note: Design Loading HS 20-44
AASHTO Specs. 1969 Edition
P.P.M. 20-4

NO.	DATE	REVISIONS	BY	APP'D
3				
2				
1				

STATE HIGHWAY COMMISSION OF KANSAS
BRIDGE No. 54-87-27.33 Sta. 47+43.22

CONSTRUCTION LAYOUT
E.B. Kellogg Ave. over F.A.I. 35W

Proj. No. 35W-87I-35W-1(33)46 Sedgwick Co.

WILSON & COMPANY
ENGINEERS & ARCHITECTS
SALINA, KANSAS

DESIGNED L.C.C. TRACED CHECKED