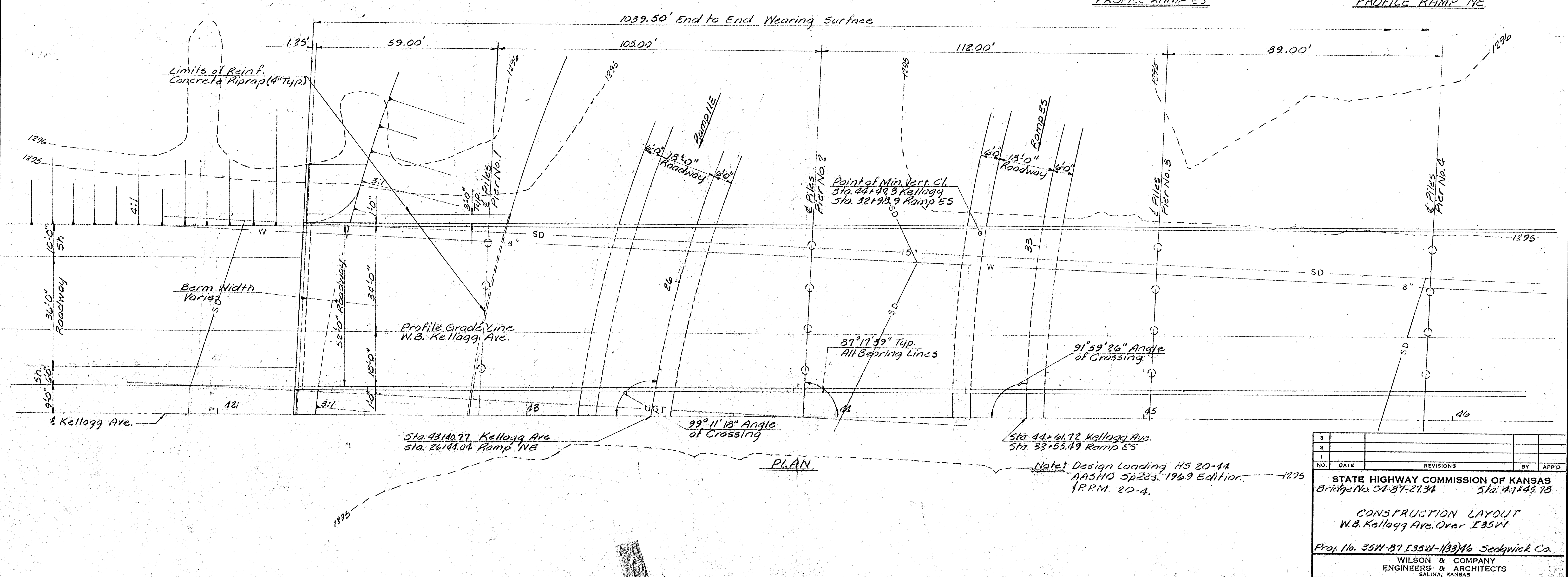
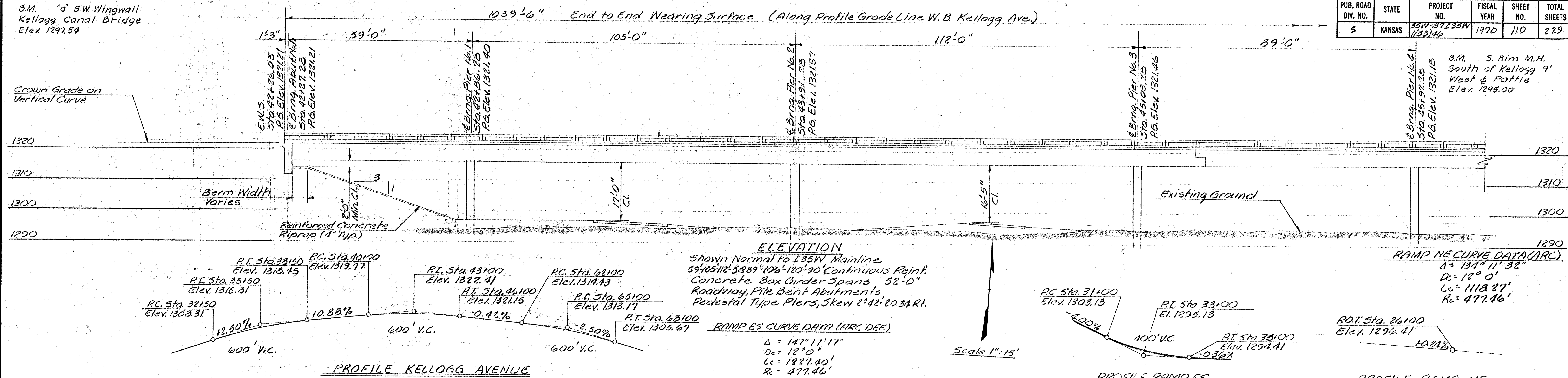


B.M. "d" SW Wingwall
Kellogg Canal Bridge
Elev. 1297.54

PUB. ROAD DIV. NO.	STATE	PROJECT NO.	FISCAL YEAR	SHEET NO.	TOTAL SHEETS
5	KANSAS	35W-27133W-1/33/46	1970	110	229



NO.	DATE	REVISIONS	BY	APP'D
3				
2				
1				

STATE HIGHWAY COMMISSION OF KANSAS
Bridge No. 5A-87-2734 Sta. 47+49.75

CONSTRUCTION LAYOUT
W.B. Kellogg Ave. Over I35W

Proj. No. 35W-87 I35W-1/33/46 Sedgwick Co.

WILSON & COMPANY
ENGINEERS & ARCHITECTS
SALINA, KANSAS

DESIGNED JLM TRACED JLM CHECKED

DEC 27 1971