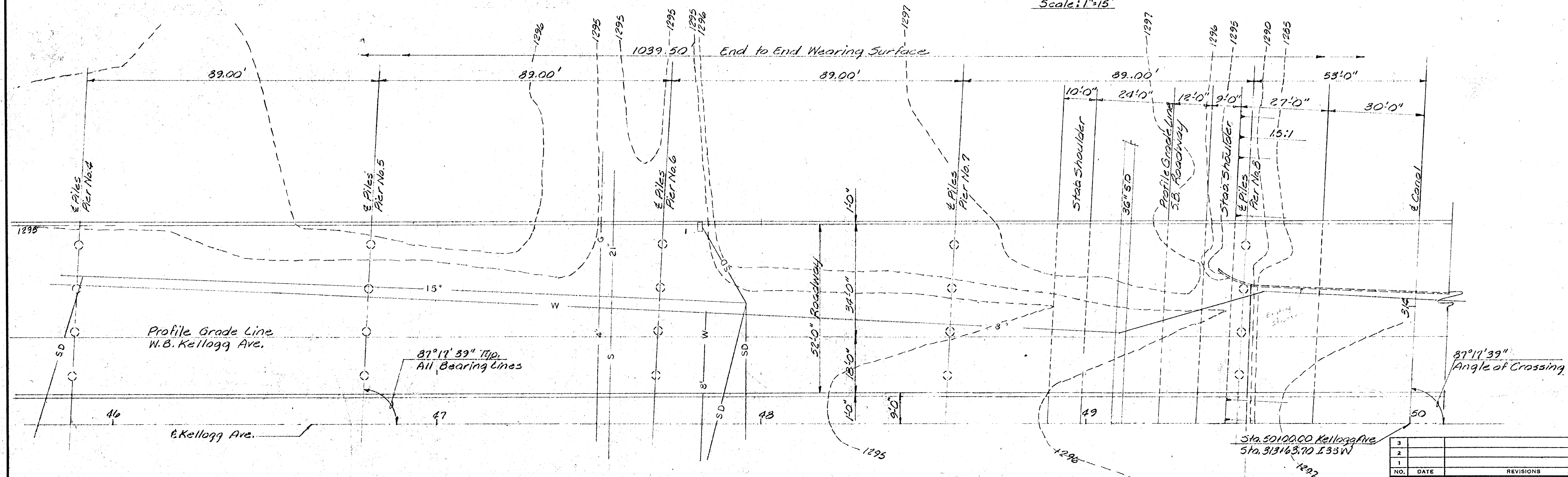
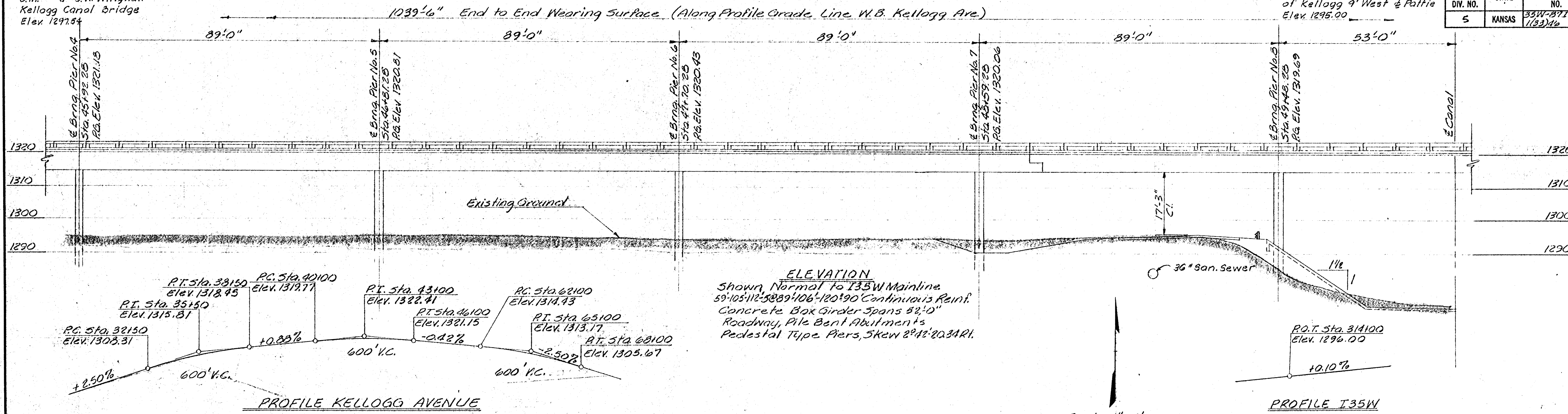


B.M. "d" S.W. Wingwall
Kellogg Canal Bridge
Elev. 1297.54

B.M. 5. Rim M.H. South
of Kellogg 9' West of Paltie
Elev. 1295.00

| PUB. ROAD DIV. NO. | STATE | PROJECT NO. | FISCAL YEAR | SHEET NO. | TOTAL SHEETS |
|--------------------|--------|---------------------|-------------|-----------|--------------|
| 5 | KANSAS | 35W-87 I35W-1(33)46 | 1970 | 111 | 229 |



Note: Design Loading HS 20-44
AASHTO Specs. 1969 Edition
P.P.M. 20-4

| NO. | DATE | REVISIONS | BY | APP'D |
|-----|------|-----------|----|-------|
| | | | | |
| | | | | |

STATE HIGHWAY COMMISSION OF KANSAS
Bridge No. 54-87-27.34

CONSTRUCTION LAYOUT
W.B. Kellogg Ave. Over I35W

Project No. 35W-87 I35W-1(33)46 Sedgewick Co.

WILSON & COMPANY
ENGINEERS & ARCHITECTS
SALINA, KANSAS

DESIGNED JLM TRACED CHECKED
DEC 27 1971