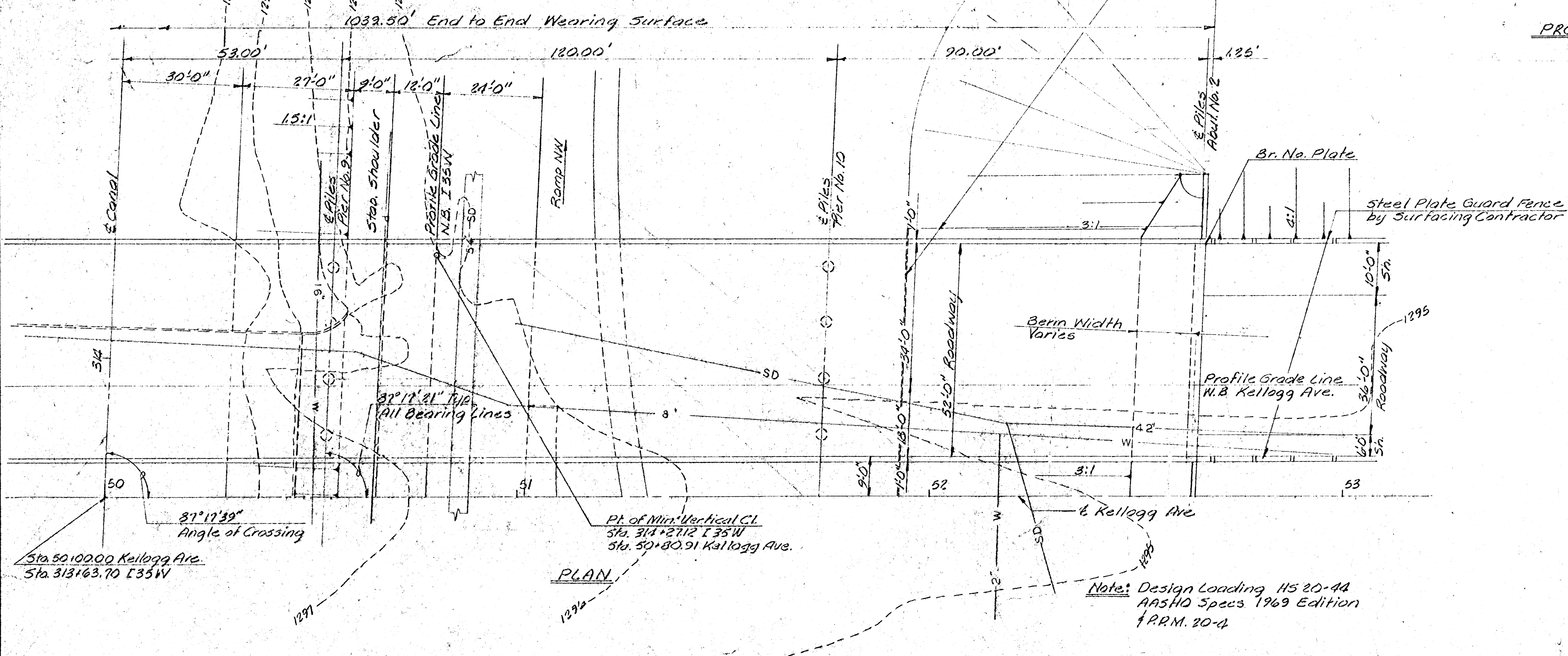
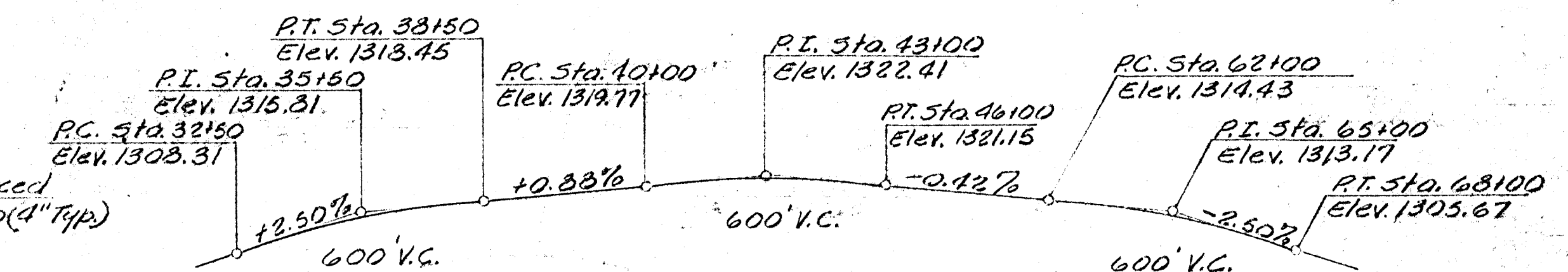
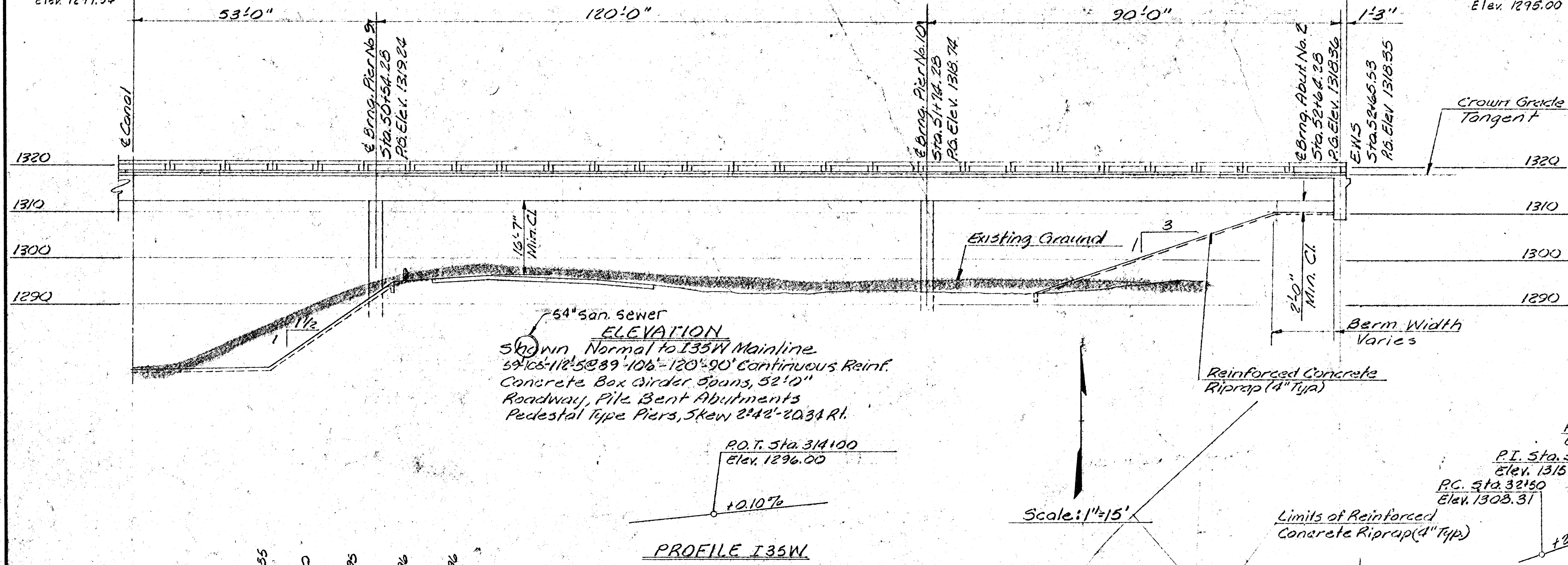


B.M. "a" S.W. Wingwall
Kellogg Canal Bridge
Elev. 1297.54

1039'-6" End to End Wearing Surface (Along Profile Grade Line W.B. Kellogg Ave.)

B.M. S Rim M.H. South
of Kellogg 9' West of Pottis
Elev. 1295.00

PUB. ROAD DIV. NO.	STATE	PROJECT NO.	FISCAL YEAR	SHEET NO.	TOTAL SHEETS
6	KANSAS	35W-87 I35W 1133/46	1970	112	229



Note: Design Loading HS 20-44
AA5HD Specs 1969 Edition
P.R.M. 20-4

NO.	DATE	REVISIONS	BY	APP'D
3				
2				
1				

STATE HIGHWAY COMMISSION OF KANSAS
Bridge No. 54-87-27.34 Sta. 47+45.78

CONSTRUCTION LAYOUT
W.B. Kellogg Ave. Over I35W

Proj. No. 35W-87 I35W-1133/46 Sedgwick Co.

WILSON & COMPANY
ENGINEERS & ARCHITECTS
SALINA, KANSAS

DESIGNED JLM TRACED CHECKED

DES 27 1971