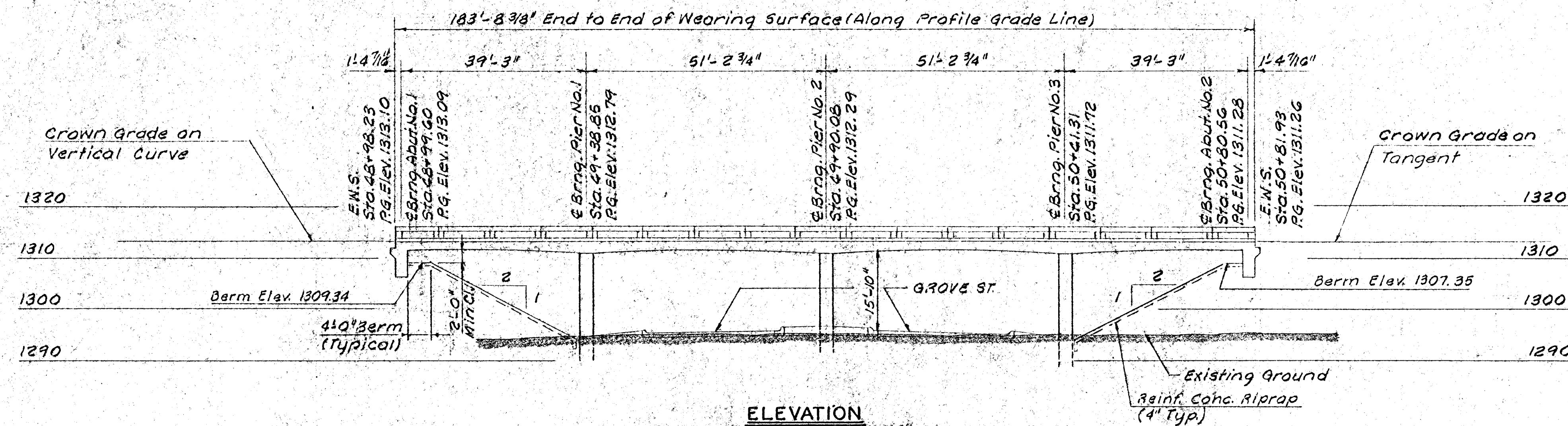


B.M. "0" Cut N.W. Corner S.W. Wingwall
Kellogg Canal Bridge
Elev. 1297.54

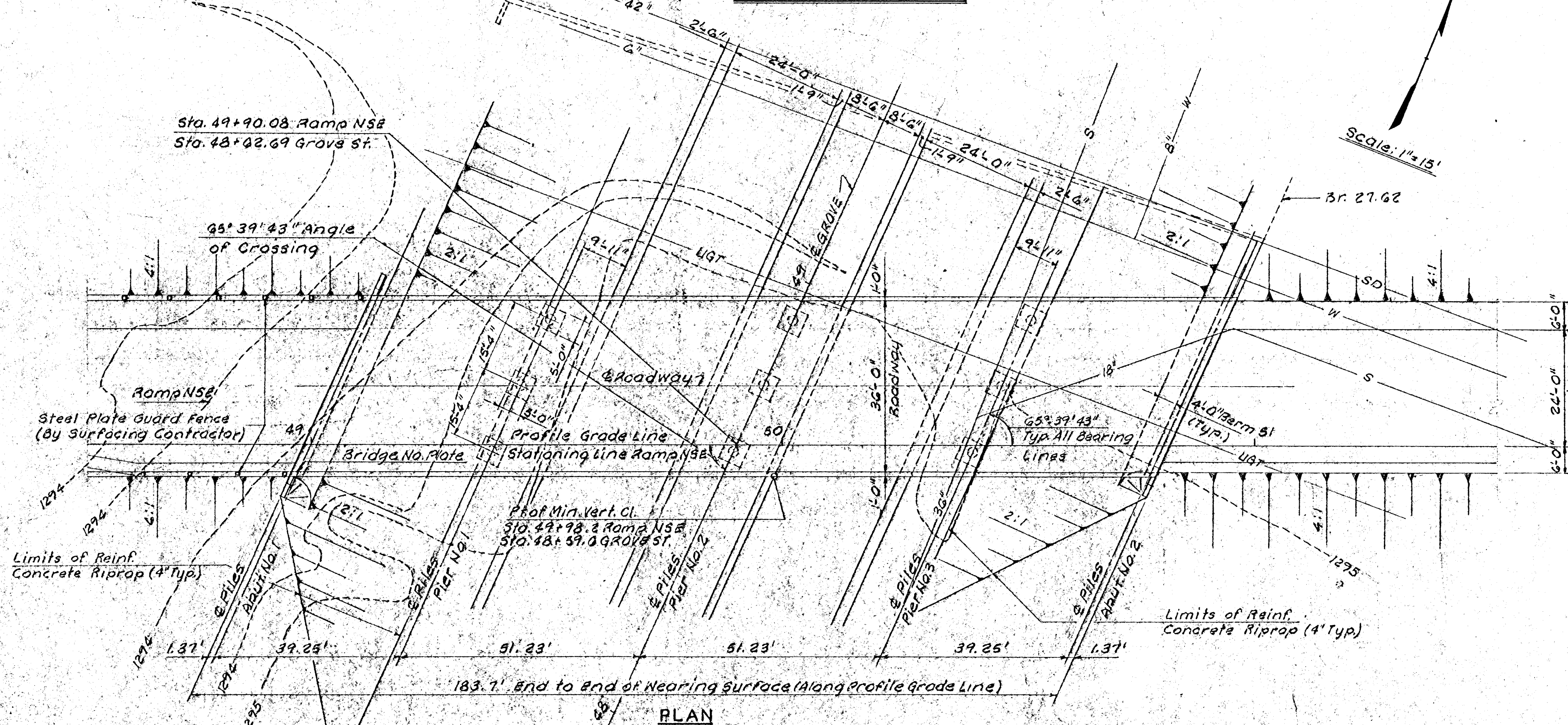
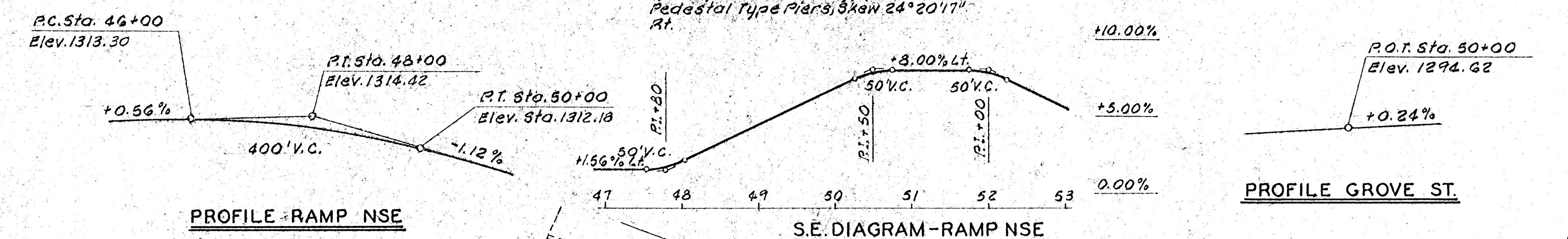
B.M. S. Edge City Monument
S. Side Kellogg & E. Erie South
Elev. 1294.35

PUB. ROAD DIV. NO.	STATE	PROJECT NO.	FISCAL YEAR	SHEET NO.	TOTAL SHEETS
5	KANSAS	#	1970	113	229

35W-87135W-1(33)46



ELEVATION
Shown Normal to Grove St.
39.25' - 2 @ 51.23' - 39.25' Continuous
Reinforced Concrete Haunched Slab
Span, 36.0' Roadway, Pile Bent
Pedestal Type Piers, skew 24° 20' 17"
At.



GENERAL NOTES

- DESIGN LOADING HS 20-44 A.A.S.H.O. SPECIFICATION, 1969 EDITION AND P.P.M. 20-4.
- EXCAVATION AND EMBANKMENT FOR GROVE STREET AND RAMP N.S.E. SHALL BE COMPLETED IN THE VICINITY OF THE BRIDGE BY THE GRADING CONTRACTOR AS SHOWN ON THE BRIDGE EXCAVATION SHEETS PRIOR TO CONSTRUCTION OF PIERS AND ABUTMENTS.
- BRIDGE EXCAVATION SHALL BE CLASS III. SEE BRIDGE EXCAVATION SHEET FOR LIMITS OF PAY EXCAVATION.
- BACKFILL COMPACTION WILL BE REQUIRED AT ALL PIERS.
- UNIT STRESSES: $f'_c = 4,000$ P.S.I., $f_c = 1,600$ P.S.I., $f_s = 20,000$ P.S.I.
- ALL REINFORCED CONCRETE RIPRAP TO BE PROVIDED BY THE BRIDGE CONTRACTOR. SEE REINFORCED CONCRETE RIPRAP SHEET FOR CONCRETE RIPRAP DETAILS.
- TRAFFIC ON RAMP N.S.E. WILL BE DETOURED DURING CONSTRUCTION OF THE BRIDGE. SEE NOTE, SHEET NO.
- PILES SHALL BE DRIVEN TO MINIMUM COMPUTED BEARING VALUES OF:
ABUTMENTS NO. 1 AND 2 TONS PER PILE
PIERS NO. 1, 2 AND 3 TONS PER PILE
- TEST PILES SHALL REMAIN IN PLACE AS A PART OF THE PILING.

NO.	DATE	REVISIONS	BY	APPD.
3				
2				
1				

STATE HIGHWAY COMMISSION OF KANSAS
BR. NO. 54-87-27.61 STA. 49+90.08

CONSTRUCTION LAYOUT
RAMP NSE OVER GROVE ST.

PROJ. NO. 35W-87135W-1(33)46 SEDGWICK CO.

WILSON & COMPANY
ENGINEERS & ARCHITECTS
SALINA, KANSAS

DESIGNED F.A.W. TRACKED F.A.W.-J.A.B. CHECKED G.H.N.