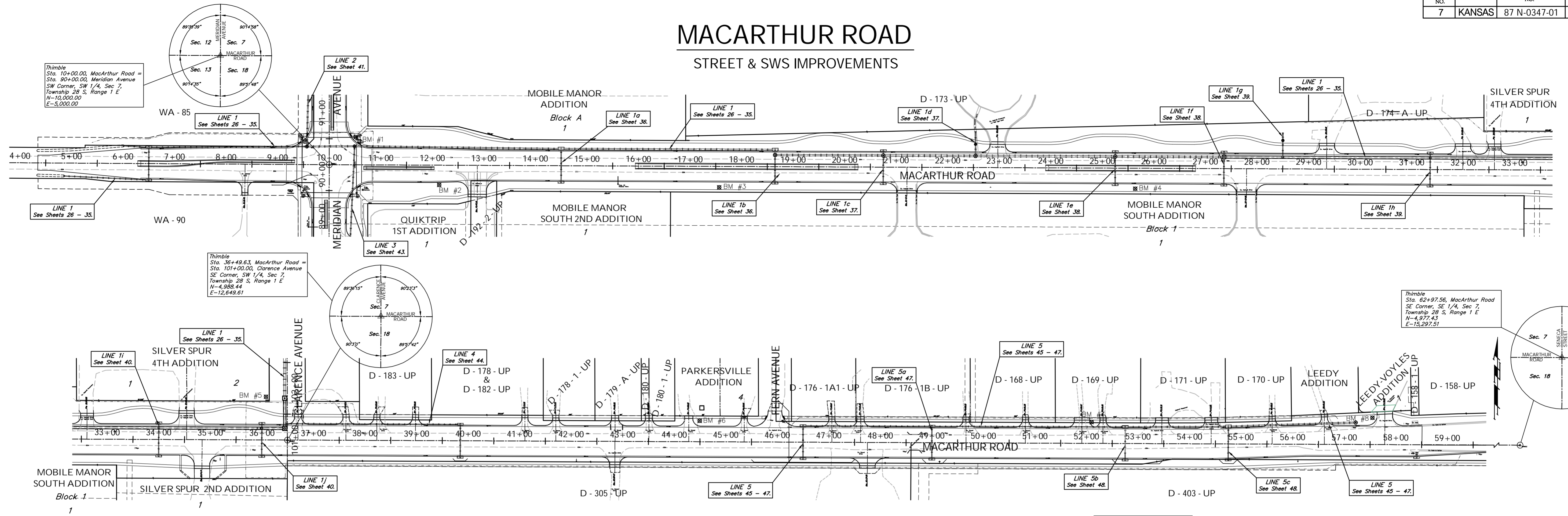


FHWA REGION NO.	STATE	PROJECT NO.	FISCAL YEAR	SHEET NO.	TOTAL SHEETS
7	KANSAS	87 N-0347-01	2007	2	123

MACARTHUR ROAD

STREET & SWS IMPROVEMENTS

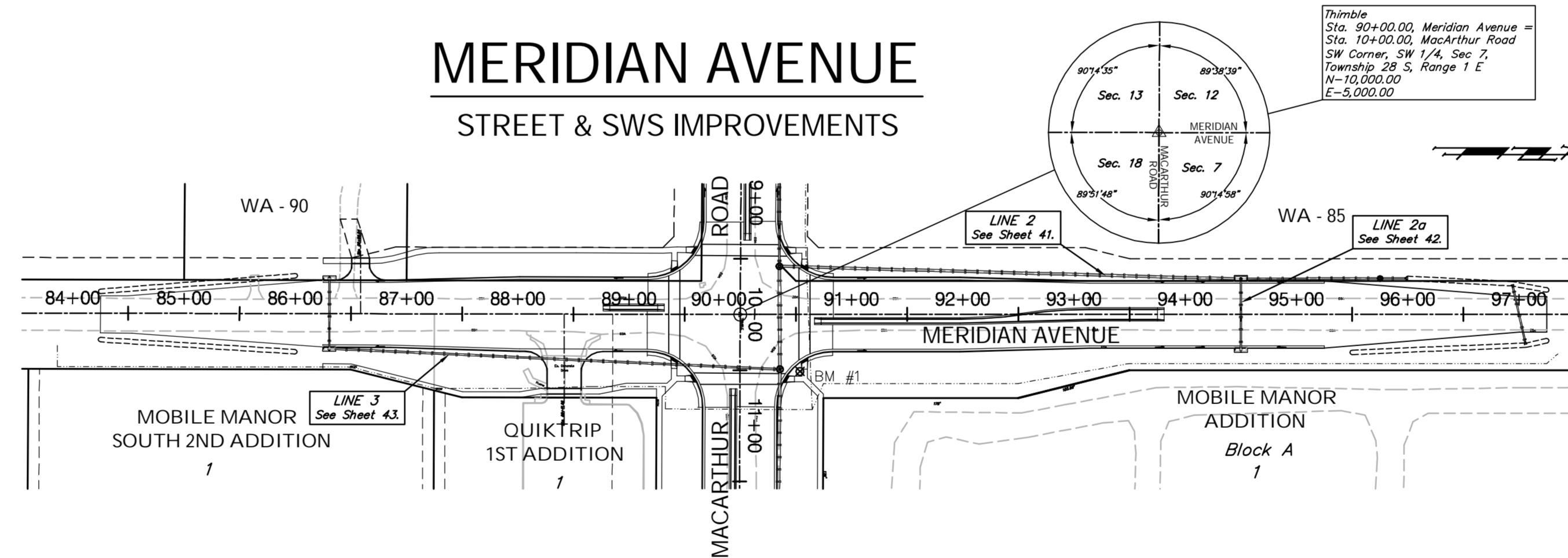


BENCHMARKS:

- BM #1 - City of Wichita Disc Located in the Northeast Corner of the Intersection of Meridian and MacArthur
Sta. 10+51, 54' Lt.
Elev. = 97.46 City Datum
- BM #2 - Railroad Spike in the North Face of the First High Line Power Pole East of Meridian Avenue on the South Side of MacArthur Road.
Sta. 12+05, 44' Rt.
Elev. = 99.10 City Datum
- BM #3 - Railroad Spike in the North Face of the Second High Line Power Pole East of the MacArthur Quik Trip Entrance and South of MacArthur
Sta. 17+55, 40' Rt.
Elev. = 98.92 City Datum
- BM #4 - Railroad Spike in the First High Line Pole West of the East Mobile Home Park Drive on the South Side of MacArthur
Sta. 25+70, 40' Rt.
Elev. = 98.59 City Datum
- BM #5 - City of Wichita Disc Located 0.5 miles East of Meridian on the North Side of MacArthur
Sta. 36+07, 84' Lt.
Elev. = 93.61 City Datum
- BM #6 - Railroad Spike in the First High Line Pole West of Fern on the North Side of MacArthur
Sta. 44+49, 42' Lt.
Elev. = 94.37 City Datum
- BM #7 - Railroad Spike in the Third High Line Pole East of Fern on the North Side of MacArthur
Sta. 52+09, 43' Lt.
Elev. = 94.52 City Datum
- BM #8 - Railroad Spike in the First Power Pole West of the Car Wash Drive on the North Side of MacArthur
Sta. 57+56, 53' Lt.
Elev. = 93.11 City Datum
- BM #9 - City of Wichita Disc Located on a Square Concrete Base West of Senca and North of MacArthur
Sta. 61+45, 85' Rt.
Elev. = 91.99 City Datum
- BM #10 - Railroad Spike in the West Face of the Light Pole in the SE Corner of Clarence and Carey
Sta. 114+07, 49' Rt.
Elev. = 94.17 City Datum
- BM #11 - Chisled on the West End of the RCBC Headwall at I-235
Sta. 121+18, 148' Rt.
Elev. = 91.56 City Datum

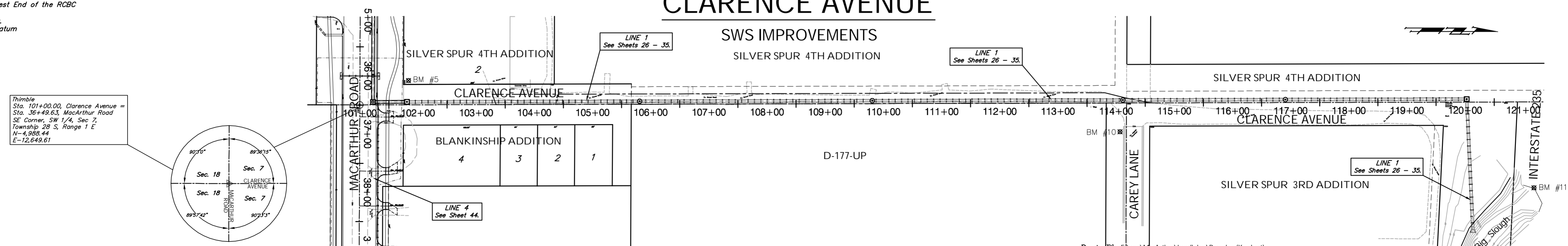
MERIDIAN AVENUE

STREET & SWS IMPROVEMENTS



CLARENCE AVENUE

SWS IMPROVEMENTS



Drawing File: E:\eng\MacArthur_Land\dwg\Base.dwg (KeySheet)

Project No. 0404E856 CAPITAL IMPROVEMENT PROJECT

Design: TPV
Drawn: STAFF
Approved: TPV
Scale: 1" = 100'

PROJECT KEYSHEET
MACARTHUR ROAD PAVING, MERIDIAN AVENUE TO SENCA STREET

Baughman Company, P.A.
315 Ellis St., Wichita, KS 67211 P 316-262-7171 F 316-262-0149
Baughman ENGINEERING | SURVEYING | PLANNING | LANDSCAPE ARCHITECTURE

July 2007
SHEET 2 OF 123