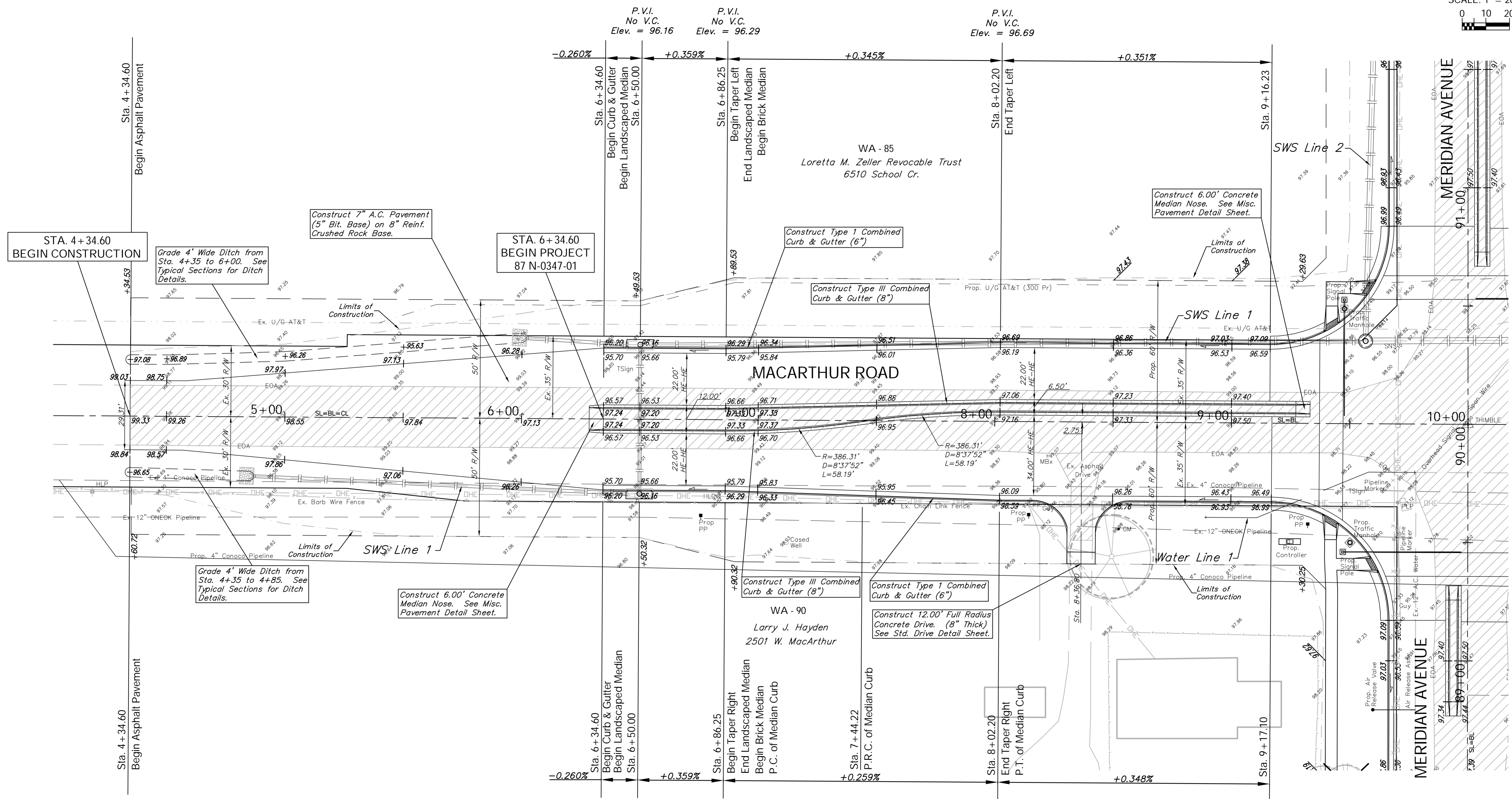


BENCHMARK:
 BM #1 - City of Wichita Disc Located in the Northeast Corner
 of the Intersection of Meridian and MacArthur
 Sta. 10+51, 54' Lt.
 Elev. = 97.46 City Datum

FHWA REGION NO.	STATE	PROJECT NO.	FISCAL YEAR	SHEET NO.	TOTAL SHEETS
7	KANSAS	87 N-0347-01	2007	10	123

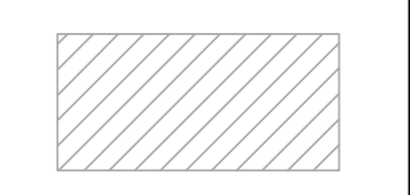
SCALE: 1" = 20'



STA. 4+34.60
 BEGIN CONSTRUCTION

STA. 6+34.60
 BEGIN PROJECT
 87 N-0347-01

Note:
 Pavement, Sidewalks, and
 Etc. To Be Removed Are
 Indicated By:



Existing Mailboxes that Conflict with the
 Proposed Construction Shall be Removed
 and Reset on Non-Hazardous Supports.
 Cost to be SUBSIDIARY to "Site
 Restoration."

Drawing File: E:\eng\MacArthur_Land\dwg\Base.dwg [Pav01]

Project No. 0404E856 CAPITAL IMPROVEMENT PROJECT
 MACARTHUR ROAD PAVING
 Sta. 4+34.60 to Sta. 10+00.00
 MACARTHUR ROAD PAVING - MERIDIAN AVENUE TO SENECA STREET

Baughman Company, P.A.
 315 Ellis St., Wichita, KS 67211 P 316-262-0149 F 316-262-0149
 ENGINEERING | SURVEYING | PLANNING | LANDSCAPE ARCHITECTURE

July 2007
 SHEET
 10
 OF
 123