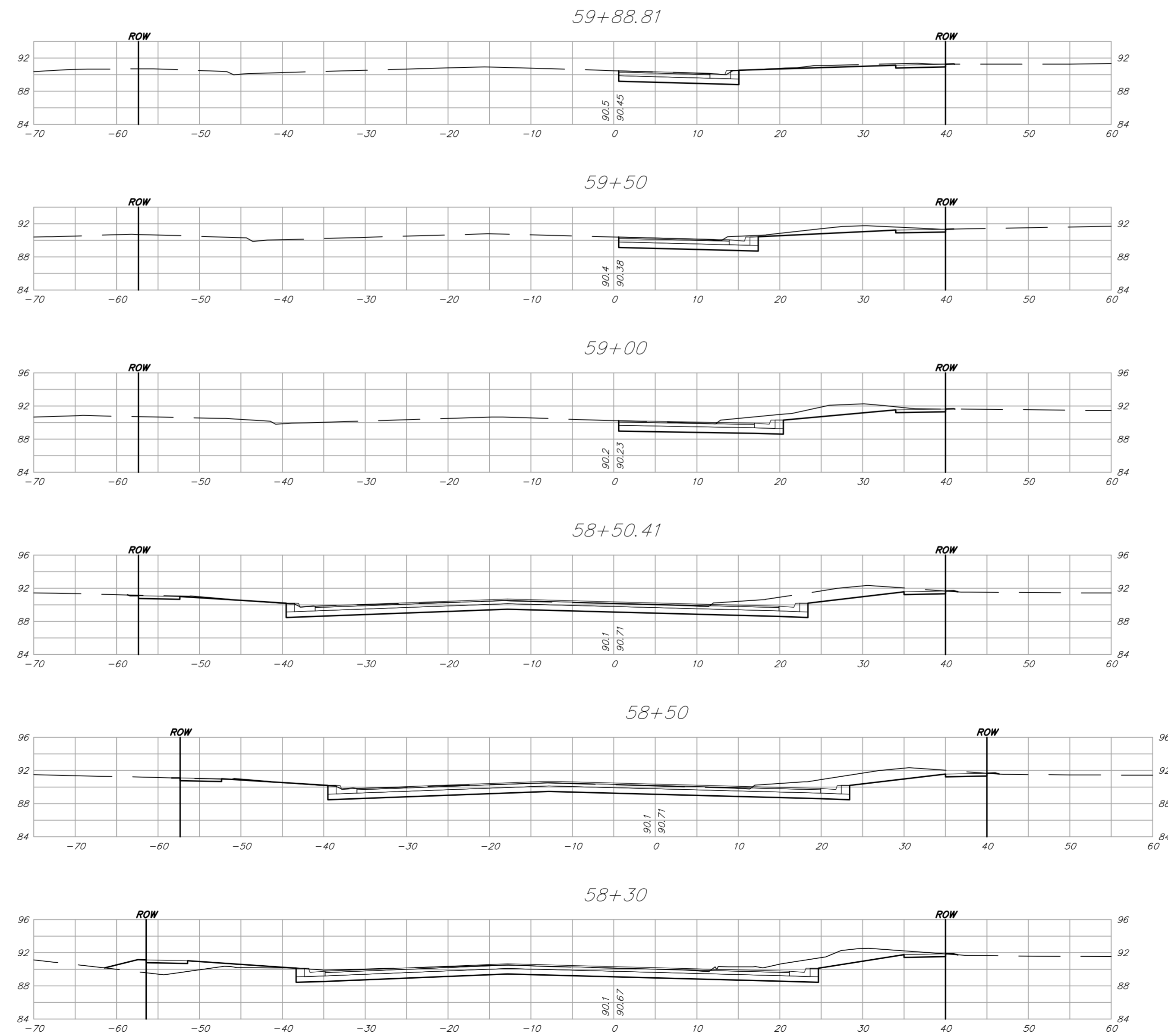


STATION	AREAS		VOLUMES		CUMULATIVE VOLUMES	
	Square Feet		Cubic Yards		Cubic Yards	
	CUT	FILL	CUT	FILL	CUT	FILL
4+34.60	47.88	0.02	31.78	0.00	31.78	0.00
4+50	63.55	0.00	148.71	6.01	180.49	6.02
5+00	97.06	6.49	229.99	8.23	410.48	14.25
5+50	151.33	2.39	352.22	2.21	762.71	16.46
6+00	229.08	0.00	310.67	0.00	1073.38	16.46
6+34.60	255.79	0.00	147.39	0.00	1220.77	16.46
6+50	261.05	0.00	360.02	0.00	1580.80	16.46
6+86.25	275.27	0.00	141.88	0.00	1722.68	16.46
7+00	281.94	0.00	515.10	0.00	2237.78	16.46
7+50	274.37	0.00	509.27	0.00	2747.06	16.46
8+02.20	252.46	0.00	432.61	0.01	3179.67	16.47
8+50	236.26	0.01	394.37	0.06	3574.03	16.52
9+00	189.66	0.05	110.32	0.02	3684.35	16.54
9+16.23	177.40	0.00	972.71	43.39	4657.07	59.93
10+83.45	136.72	14.01	86.55	9.41	4743.62	69.34
11+00	145.70	16.70	306.25	23.07	5049.87	92.41
11+50	185.05	8.21	382.89	12.42	5432.76	104.82
11+97.79	247.59	5.82	546.17	7.47	5978.93	112.29
12+50	317.31	1.90	576.11	1.86	6555.04	114.16
13+00	304.88	0.11	156.63	0.06	6711.67	114.21
13+13.74	310.69	0.11	390.04	0.16	7101.70	114.37
13+50	270.17	0.12	502.36	0.28	7604.07	114.65
14+00	272.38	0.18	512.46	0.32	8116.53	114.98
14+50	281.08	0.17	540.06	0.38	8656.59	115.36
15+00	302.18	0.25	564.65	0.43	9221.24	115.79
15+50	307.65	0.22	555.32	0.36	9776.56	116.16
16+00	292.09	0.18	553.69	0.27	10330.24	116.43
16+50	305.89	0.11	333.62	0.14	10663.87	116.57
16+80	294.63	0.14	216.46	0.07	10880.33	116.64
17+00	289.81	0.06	539.06	0.16	11419.39	116.80
17+50	292.38	0.11	540.69	0.18	11960.08	116.98
18+00	291.57	0.08	555.33	0.17	12515.42	117.15

STATION	AREAS		VOLUMES		CUMULATIVE VOLUMES	
	Square Feet		Cubic Yards		Cubic Yards	
	CUT	FILL	CUT	FILL	CUT	FILL
18+50	308.19	0.11	287.89	0.11	12803.31	117.26
18+75	313.65	0.13	296.67	0.07	13099.98	117.33
19+00	327.16	0.03	595.75	0.07	13695.73	117.40
19+50	316.25	0.04	547.11	0.05	14242.84	117.45
20+00	274.62	0.01	198.02	0.01	14440.86	117.46
20+20	260.03	0.02	288.89	0.04	14729.75	117.50
20+50	259.97	0.06	495.91	0.05	15225.65	117.56
21+00	275.61	0.00	471.55	1.76	15697.20	119.32
21+50	233.67	1.90	403.97	11.71	16101.17	131.03
22+00	202.62	10.75	353.25	36.20	16454.42	167.23
22+50	178.89	28.34	345.45	26.39	16799.87	193.63
23+00	194.19	0.16	350.22	3.90	17150.08	197.52
23+50	184.04	4.05	301.90	4.73	17451.98	202.25
23+96	170.36	1.50	24.89	0.32	17476.87	202.57
24+00	165.69	2.82	314.65	5.31	17791.53	207.88
24+50	174.13	2.91	334.27	8.73	18125.80	216.61
25+00	186.88	6.52	365.48	7.67	18491.28	224.28
25+50	207.84	1.77	392.30	2.00	18883.58	226.28
26+00	215.85	0.39	407.95	1.14	19291.53	227.42
26+50	224.74	0.84	208.68	0.61	19500.22	228.03
26+75	226.02	0.49	218.53	0.39	19718.75	228.42
27+00	246.01	0.35	476.88	0.61	20195.63	229.03
27+50	269.01	0.31	491.37	3.08	20686.99	232.11
28+00	261.67	3.01	425.50	14.10	21112.49	246.21
28+50	197.87	12.21	362.38	18.81	21474.87	265.01
29+00	193.49	8.10	360.02	7.53	21834.88	272.54
29+50	195.32	0.03	335.16	7.80	22170.04	280.34
30+00	166.65	8.40	308.86	19.08	22478.90	299.42
30+50	166.92	12.21	296.46	23.48	22775.35	322.90
31+00	153.25	13.14	285.40	20.15	23060.75	343.05
31+50	154.98	8.62	331.34	8.00	23392.10	351.06
32+00	202.88	0.02	376.06	0.04	23768.15	351.09

STATION	AREAS		VOLUMES		CUMULATIVE VOLUMES	
	Square Feet		Cubic Yards		Cubic Yards	
	CUT	FILL	CUT	FILL	CUT	FILL
32+50	203.27	0.02	356.51	6.04	24124.66	357.14
33+00	181.76	6.51	321.58	17.61	24446.24	374.75
33+50	165.54	12.51	298.56	29.14	24744.80	403.89
34+00	156.90	18.96	326.55	23.48	25071.35	427.36
34+50	195.78	6.39	385.09	5.92	25456.44	433.29
35+00	220.12	0.01	356.45	7.68	25812.89	440.96
35+50	164.84	8.28	319.69	11.36	26132.58	452.32
36+00	180.42	3.98	374.75	5.46	26507.33	457.78
36+50	224.31	1.91	413.71	1.89	26921.04	459.67
37+00	222.50	0.12	454.08	0.17	27375.12	459.84
37+50	267.90	0.06	374.75	0.04	27628.88	459.87
37+75	280.22	0.03	252.86	0.03	27881.74	459.90
38+00	265.96	0.03	511.98	0.08	28393.72	459.98
38+50	286.99	0.06	513.15	0.10	28906.87	460.08
39+00	267.22	0.04	489.96	0.09	29396.83	460.17
39+50	261.93	0.05	483.60	0.11	29880.43	460.28
40+00	260.35	0.07	452.78	0.09	30333.20	460.37
40+50	228.65	0.03	441.10	0.57	30774.31	460.94
41+00	247.75	0.59	388.87	3.35	31163.18	464.29
41+50	172.24	3.02	294.19	14.70	31457.36	478.99
42+00	145.48	12.85	258.95	27.52	31716.32	506.51
42+50	134.19	16.87	309.85	15.62	32026.17	522.13
43+00	200.45	0.00	375.04	0.33	32401.20	522.46
43+50	204.59	0.36	355.82	5.74	32757.03	528.20
44+00	179.70	5.84	387.79	5.42	33144.81	533.62
44+50	239.11	0.01	463.21	5.00	33608.02	538.61
45+00	261.16	5.38	550.24	4.99	34158.26	543.60
45+50	333.10	0.00	28.24	0.00	34186.50	543.60
45+52.32	324.24	0.00	600.28	0.46	34786.79	544.06
46+00	355.61	0.52	531.03	0.37	35317.81	544.43
46+38.32	392.71	0.00	172.79	0.00	35490.60	544.43
46+50	406.14	0.00	810.28	0.00	36300.88	544.43

STATION	AREAS		VOLUMES		CUMULATIVE VOLUMES	
	Square Feet		Cubic Yards		Cubic Yards	
	CUT	FILL	CUT	FILL	CUT	FILL
47+00	468.96	0.00	827.39	0.00	37128.27	544.43
47+50	424.62	0.00	702.72	0.29	37830.99	544.72
48+00	334.32	0.32	514.21	10.55	38345.21	555.27
48+50	221.03	11.08	415.76	11.28	38760.97	566.55
49+00	228.00	1.10	405.05	2.77	39166.02	569.32
49+50	209.46	1.89	401.81	1.88	39567.83	571.20
50+00	224.49	0.14	407.75	2.65	39975.58	573.85
50+50	215.89	2.73	395.73	2.53	40371.32	576.38
51+00	211.50	0.01	388.66	1.08	40759.98	577.46
51+50	208.25	1.16	416.44	1.21	41176.42	578.67
52+00	241.50	0.14	443.23	0.37	41619.65	579.03
52+50	237.18	0.25	463.72	0.39	42083.37	579.43
53+00	263.64	0.17	517.24	0.27	42600.61	579.69
53+50	294.98	0.11	544.77	0.21	43145.38	579.90
54+00	293.37	0.11	563.15	0.15	43708.52	580.06
54+50	314.83	0.05	291.02	0.06	43999.54	580.12
54+75	313.78	0.09	276.30	0.08	44275.84	580.21
55+00	313.78	0.10	522.97	0.17	44798.81	580.38
55+50	281.77	0.09	484.59	0.15	45283.40	580.53
56+00	241.59	0.07	225.15	0.06	45508.55	580.59
56+25	244.73	0.05	218.99	0.06	45727.54	580.65
56+50	228.29	0.07	393.85	0.84	46121.39	581.48
57+00	197.07	0.84	330.55	4.93	46451.94	586.41
57+50	159.92	4.49	261.37	5.03	46713.32	591.44
58+00	122.36	0.94	123.25	9.82	46836.57	601.26
58+30	99.49	16.73	73.38	6.30	46909.95	607.56
58+50	98.64	0.27	1.50	0.00	46911.45	607.56
58+50.41	99.16	0.19	132.51	0.19	47043.96	607.75
59+00	45.13	0.02	73.59	0.02	47117.55	607.76
59+50	34.34	0.00	41.59	0.02	47159.13	607.79
59+88.81	23.52	0.03	0.00	0.00	47159.13	607.79



The Earthwork Quantities in these tables have been figured using the Average End Area Method. These Quantities have NOT been adjusted by any factors.

Earthwork Quantities listed in these tables reflect the existing ground (including pavement) at the time of the survey. Actual Quantities for the Bid Summary shall be reduced by the volume of removed asphalt, figured using the following thicknesses:

STREET	STATIONS	ASSUMED PAVEMENT THICKNESS
MacArthur Road	4 + 34.60 to 58 + 50.41	6" Asphalt