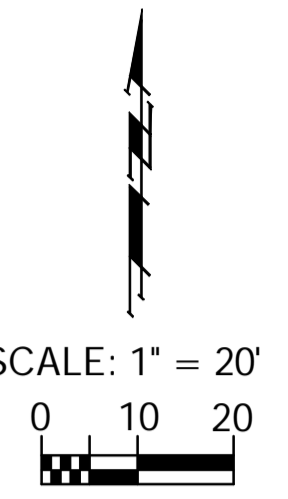
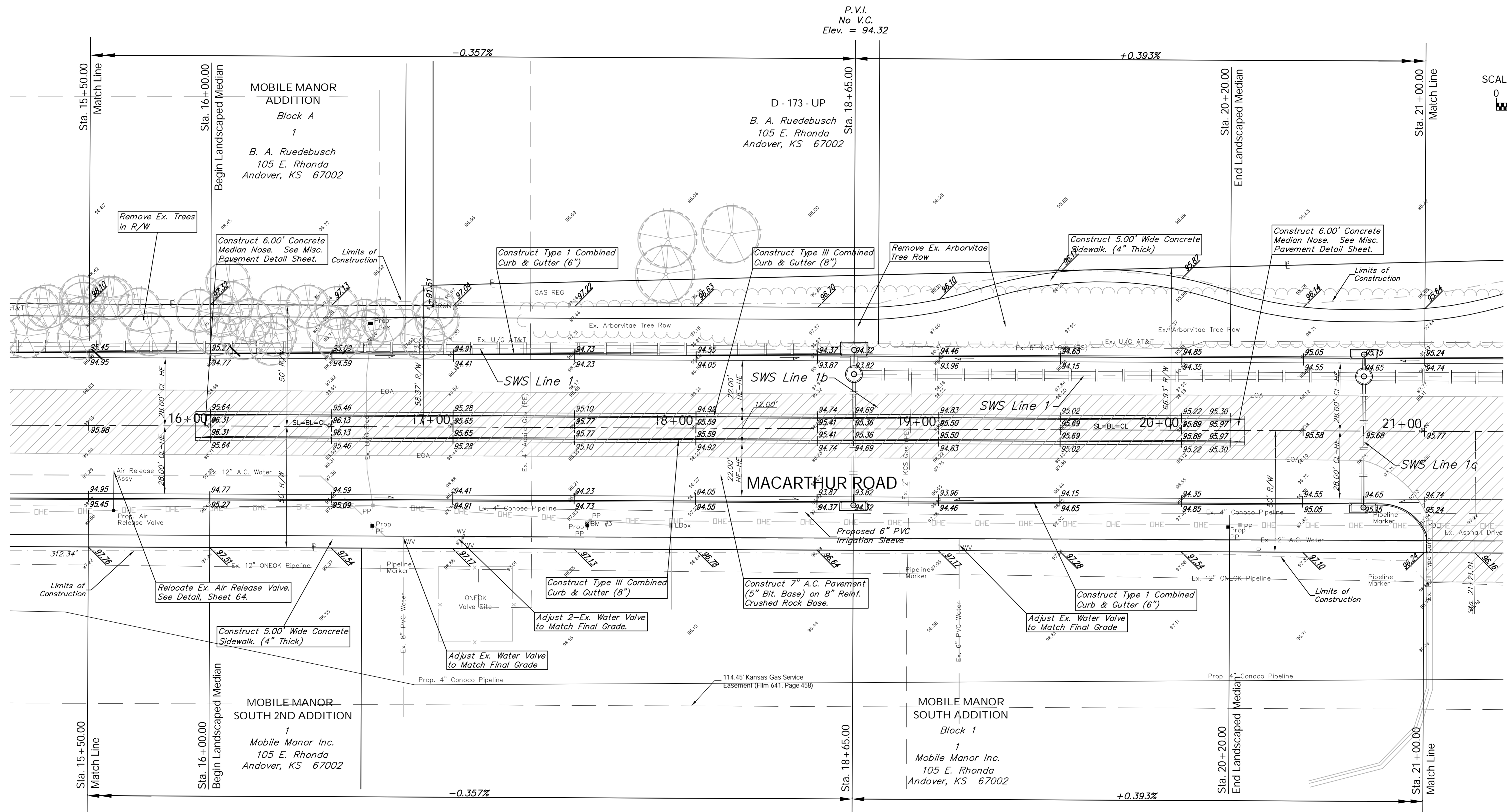


BENCHMARK:
 BM #3 - Railroad Spike in the North Face of the Second
 High Line Power Pole East of the MacArthur Quik
 Trip Entrance and South of MacArthur
 Sta. 17+55, 40' Rt.
 Elev. = 98.92 City Datum


FHWA REGION NO.	STATE	PROJECT NO.	FISCAL YEAR	SHEET NO.	TOTAL SHEETS
7	KANSAS	87 N-0347-01	2007	12	123




P.V.I.
 No V.C.
 Elev. = 94.32

P.V.I.
 No V.C.
 Elev. = 94.32

Note:
 Pavement, Sidewalks, and
 Etc. To Be Removed Are
 Indicated By



Note:
 Trees/Shrubs to be
 removed are marked thus:



Drawing File: E:\eng\MacArthur_Land\dwg\Base.dwg [Pav03]
 Project No. 0404E856 CAPITAL IMPROVEMENT PROJECT
 Design: TPV
 Drawn: STAFF
 Approved: TPV
 Scale: NOTED

MACARTHUR ROAD PAVING
 Sta. 15+50.00 to Sta. 21+00.00
 MACARTHUR ROAD PAVING - MERIDIAN AVENUE TO SENECA STREET

Baughman Company, P.A.
 315 Ellis St., Wichita, KS 67211 P 316-262-7171 F 316-262-0149
 ENGINEERING | SURVEYING | PLANNING | LANDSCAPE ARCHITECTURE

July 2007
 SHEET 12
 OF 123