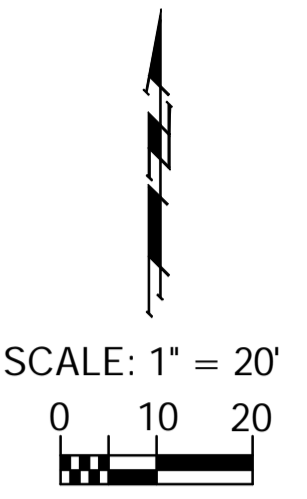
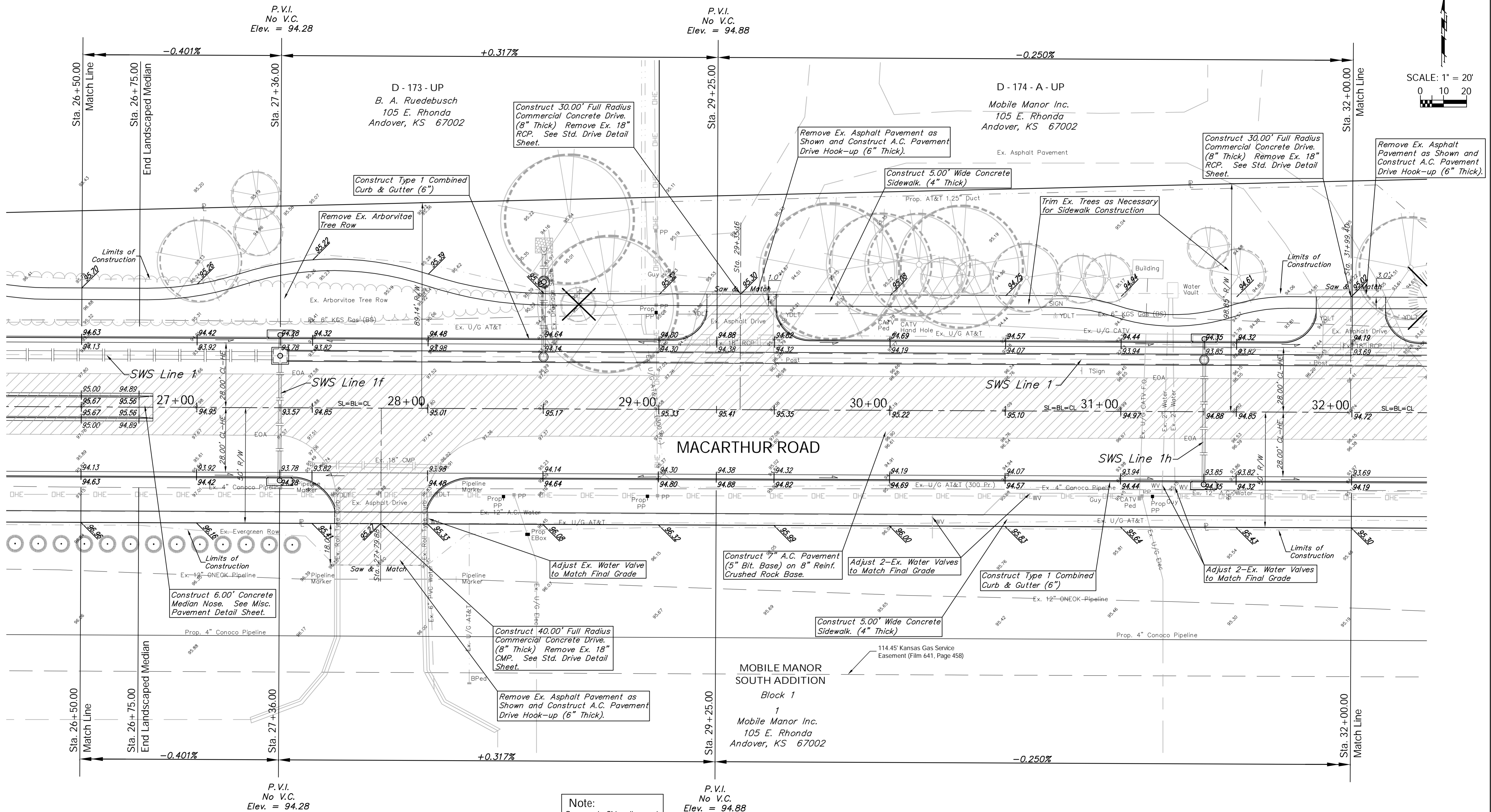


BENCHMARK:
 BM #4 - Railroad Spike in the First High Line Pole West of
 the East Mobile Home Park Drive on the South
 Side of MacArthur
 Sta. 25+70, 40' Rt.
 Elev. = 98.59 City Datum

FHWA REGION NO.	STATE	PROJECT NO.	FISCAL YEAR	SHEET NO.	TOTAL SHEETS
7	KANSAS	87 N-0347-01	2007	14	123



Note:
 Pavement, Sidewalks, and
 Etc. To Be Removed Are
 Indicated By

Note:
 Trees/Shrubs to be
 removed are marked thus:

Drawing File: E:\eng\MacArthur\Land\dwg\Base.dwg (Pav05)
 Project No. 0404E856 CAPITAL IMPROVEMENT PROJECT
MACARTHUR ROAD PAVING
 Sta. 26+50.00 to Sta. 32+00.00
 MACARTHUR ROAD PAVING - MERIDIAN AVENUE TO SENECA STREET
 Scale: NOTED

Baughman Company, P.A.
 315 Ellis St., Wichita, KS 67211 P 316-262-7171 F 316-262-0149
 ENGINEERING | SURVEYING | PLANNING | LANDSCAPE ARCHITECTURE

July 2007
 SHEET
 14
 OF
 123