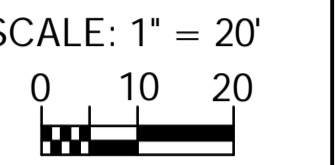


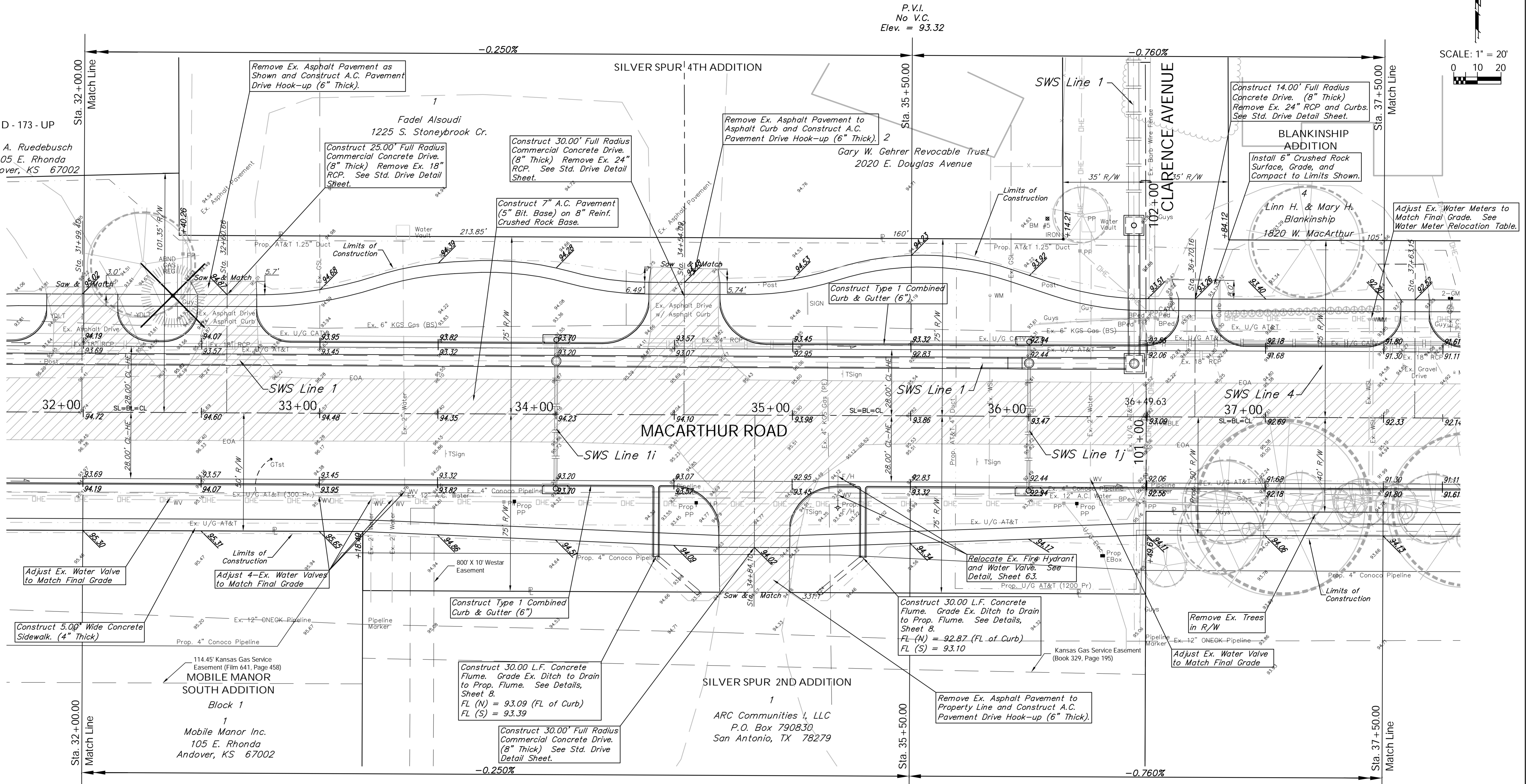
BENCHMARK:
 BM #5 - City of Wichita Disc Located 0.5 miles East of
 Meridian on the North Side of MacArthur
 Sta. 36+07, 84' Lt.
 Elev. = 93.61 City Datum

FHWA REGION NO.	STATE	PROJECT NO.	FISCAL YEAR	SHEET NO.	TOTAL SHEETS
7	KANSAS	87 N-0347-01	2007	15	123



P.V.I.
 No V.C.
 Elev. = 93.32

P.V.I.
 No V.C.
 Elev. = 93.32



Construct 30.00 L.F. Concrete Flume. Grade Ex. Ditch to Drain to Prop. Flume. See Details, Sheet 8.
 FL (N) = 93.09 (FL of Curb)
 FL (S) = 93.39

Existing Mailboxes that Conflict with the Proposed Construction Shall be Removed and Reset on Non-Hazardous Supports. Cost to be SUBSIDIARY to "Site Restoration."

Note:
 Pavement, Sidewalks, and Etc. To Be Removed Are Indicated By:

Note:
 Trees/Shrubs to be removed are marked thus:

Drawing File: E:\eng\MacArthur_Land\dwg\Base.dwg (Pav06)
 Project No. 0404E856 CAPITAL IMPROVEMENT PROJECT
 Design: TPV
 Drawn: STAFF
 Approved: TPV
 Scale: NOTED

MACARTHUR ROAD PAVING
 Sta. 32+00.00 to Sta. 37+50.00
 MACARTHUR ROAD PAVING, MERIDIAN AVENUE TO SENECA STREET

Baughman Company, P.A.
 315 Ellis St., Wichita, KS 67211 P 316-262-0149 F 316-262-0149
 ENGINEERING | SURVEYING | PLANNING | LANDSCAPE ARCHITECTURE

July 2007
 SHEET 15 OF 123