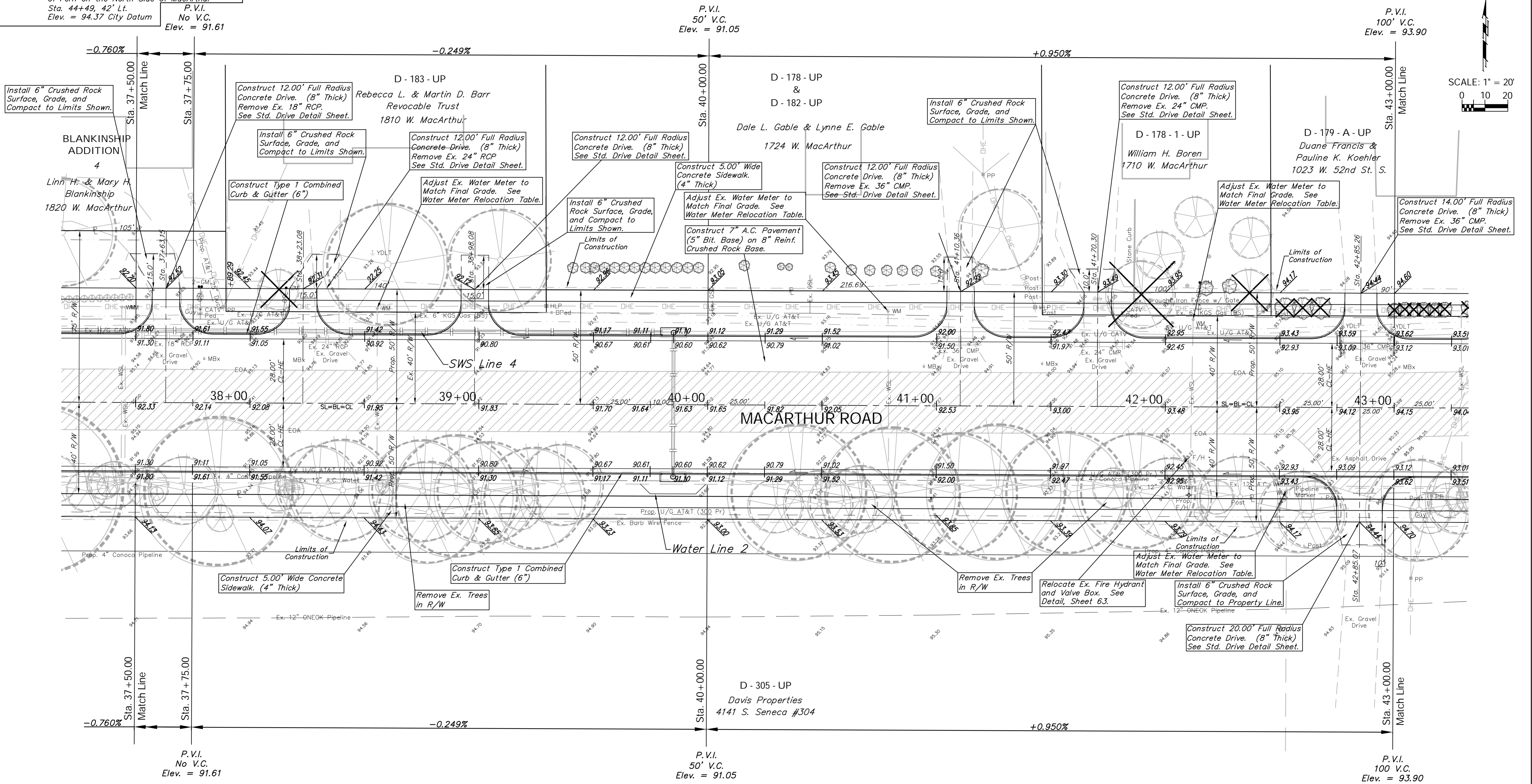


BENCHMARK:
 BM #5 - City of Wichita Disc Located 0.5 miles East of Meridian on the North Side of MacArthur Sta. 36+07, 84' Lt. Elev. = 93.61 City Datum
 BM #6 - Railroad Spike in the First High Line Pole West of Fern on the North Side of MacArthur Sta. 44+49, 42' Lt. P.V.I. No V.C. Elev. = 94.37 City Datum

Construct Approx. 150 L.F. 6" Protection Curb from Sta. 37+75 to 39+25.

Construct Approx. 150 L.F. 6" Protection Curb from Sta. 40+75 to 42+25.

FHWA REGION NO.	STATE	PROJECT NO.	FISCAL YEAR	SHEET NO.	TOTAL SHEETS
7	KANSAS	87 N-0347-01	2007	16	123



Install 6" Crushed Rock Surface, Grade, and Compact to Limits Shown.

Construct 12.00' Full Radius Concrete Drive. (8" Thick) Remove Ex. 18" RCP. See Std. Drive Detail Sheet.

Construct 12.00' Full Radius Concrete Drive. (8" Thick) Remove Ex. 24" RCP. See Std. Drive Detail Sheet.

Construct 12.00' Full Radius Concrete Drive. (8" Thick) Remove Ex. 24" RCP. See Std. Drive Detail Sheet.

Construct 5.00' Wide Concrete Sidewalk. (4" Thick)

Construct 12.00' Full Radius Concrete Drive. (8" Thick) Remove Ex. 36" CMP. See Std. Drive Detail Sheet.

Install 6" Crushed Rock Surface, Grade, and Compact to Limits Shown.

Construct 12.00' Full Radius Concrete Drive. (8" Thick) Remove Ex. 24" CMP. See Std. Drive Detail Sheet.

Adjust Ex. Water Meter to Match Final Grade. See Water Meter Relocation Table.

Construct 14.00' Full Radius Concrete Drive. (8" Thick) Remove Ex. 36" CMP. See Std. Drive Detail Sheet.

Construct 5.00' Wide Concrete Sidewalk. (4" Thick)

Construct Type 1 Combined Curb & Gutter (6")

Remove Ex. Trees in R/W

Remove Ex. Trees in R/W

Relocate Ex. Fire Hydrant and Valve Box. See Detail, Sheet 63.

Construct 20.00' Full Radius Concrete Drive. (8" Thick) See Std. Drive Detail Sheet.

Note:
Pavement, Sidewalks, and Etc. To Be Removed Are Indicated By:



Note:
Trees/Shrubs to be removed are marked thus:



Existing Mailboxes that Conflict with the Proposed Construction Shall be Removed and Reset on Non-Hazardous Supports. Cost to be SUBSIDIARY to "Site Restoration."

Drawing File: E:\eng\MacArthur_Land\dwg\Base.dwg [Pav07]
 Project No. 0404E856 CAPITAL IMPROVEMENT PROJECT
 Design: TPV
 Drawn: STAFF
 Approved: TPV
 Scale: NOTED

MACARTHUR ROAD PAVING
 Sta. 37+50.00 to Sta. 43+00.00
 MACARTHUR ROAD PAVING - MERIDIAN AVENUE TO SENECA STREET

Baughman Company, P.A.
 315 Ellis St., Wichita, KS 67211 P 316-262-7171 F 316-262-0149
 ENGINEERING | SURVEYING | PLANNING | LANDSCAPE ARCHITECTURE

July 2007
 SHEET 16 OF 123