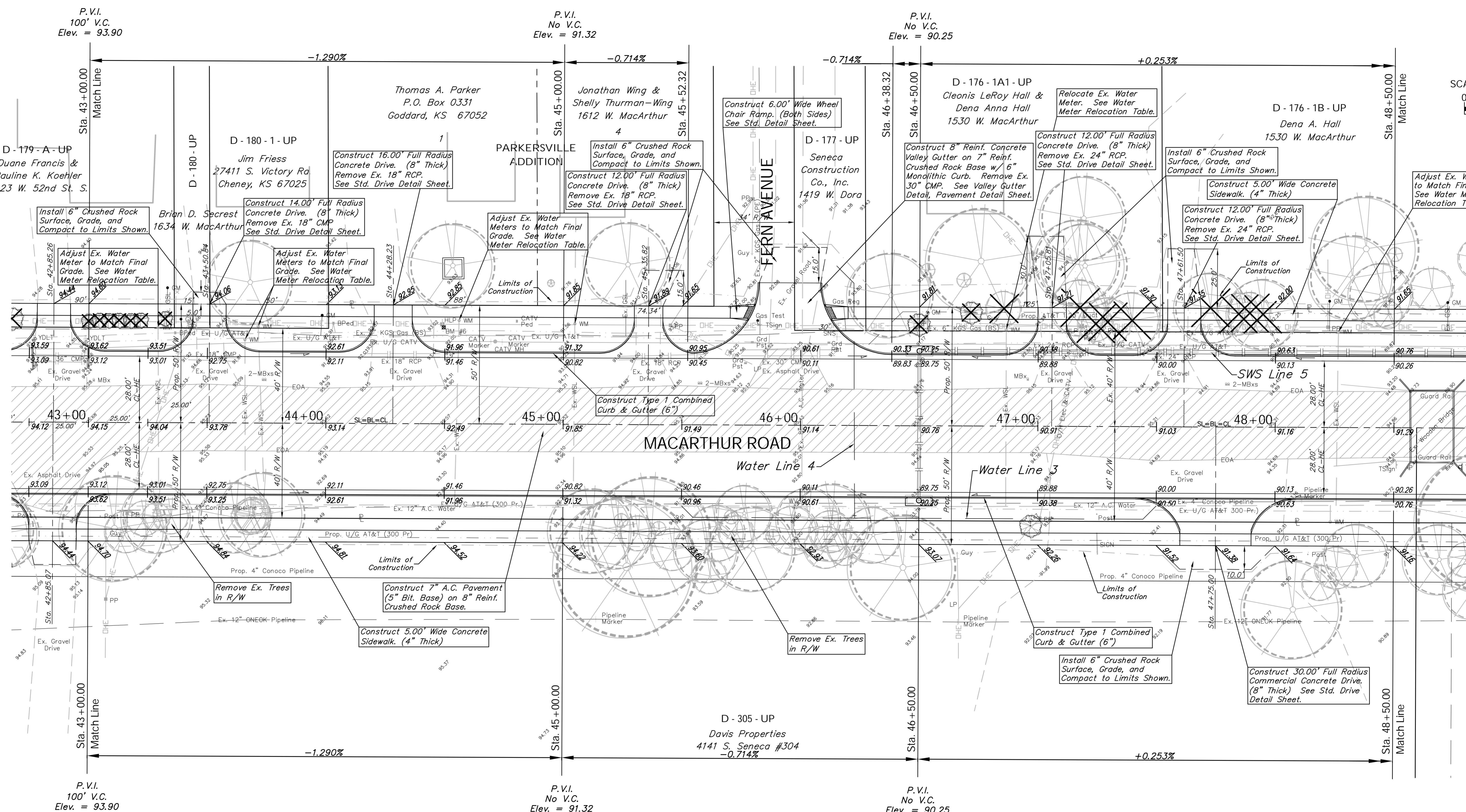
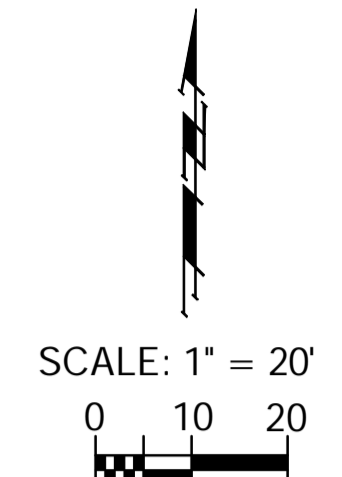


BENCHMARK:
 BM #6 - Railroad Spike in the First High Line Pole West
 of Fern on the North Side of MacArthur
 Sta. 44+49, 42' Lt.
 Elev. = 94.37 City Datum

FHWA REGION NO.	STATE	PROJECT NO.	FISCAL YEAR	SHEET NO.	TOTAL SHEETS
7	KANSAS	87 N-0347-01	2007	17	123

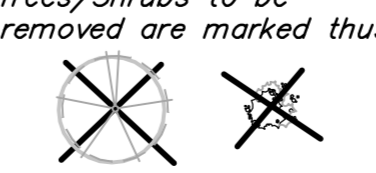
Construct Approx. 125 L.F.
 8" Protection Curb from
 Sta. 46+25 to 47+50.



Note:
 Pavement, Sidewalks, and
 Etc. To Be Removed Are
 Indicated By:



Note:
 Trees/Shrubs to be
 removed are marked thus:



Existing Mailboxes that Conflict with the
 Proposed Construction Shall be Removed
 and Reset on Non-Hazardous Supports.
 Cost to be SUBSIDIARY to "Site
 Restoration."

Drawing File: E:\eng\MacArthur\Land\dwg\Base.dwg (Pav08)
 Project No. 0404E856 CAPITAL IMPROVEMENT PROJECT
MACARTHUR ROAD PAVING
 Sta. 43+00.00 to Sta. 48+50.00
 MACARTHUR ROAD PAVING - MERIDIAN AVENUE TO SENECA STREET
 Scale: NOTED

Baughman Company, P.A.
 315 Ellis St., Wichita, KS 67211 P 316-262-0149 F 316-262-0149
 ENGINEERING | SURVEYING | PLANNING | LANDSCAPE ARCHITECTURE

July 2007
 SHEET
 17
 OF
 123