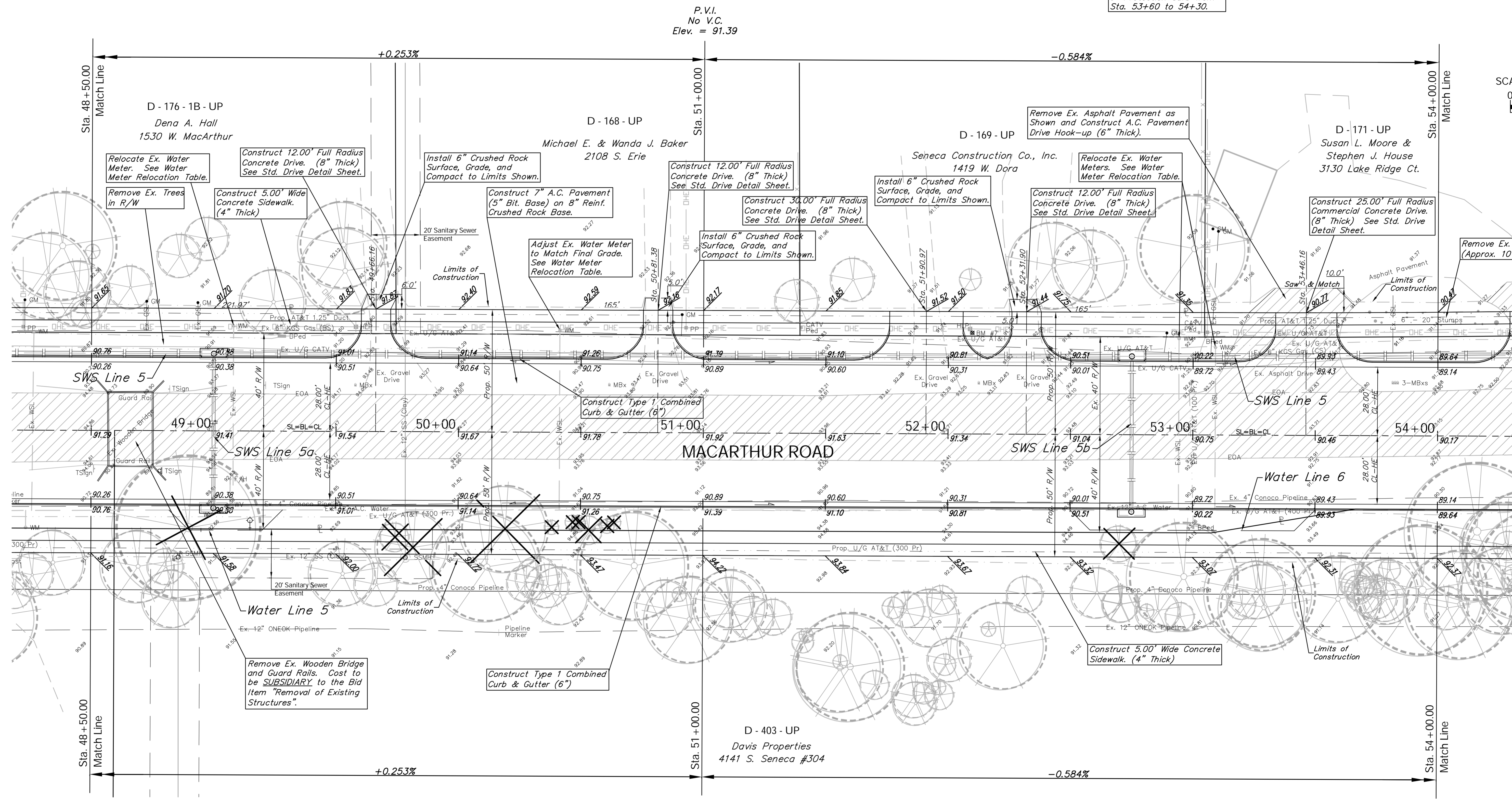
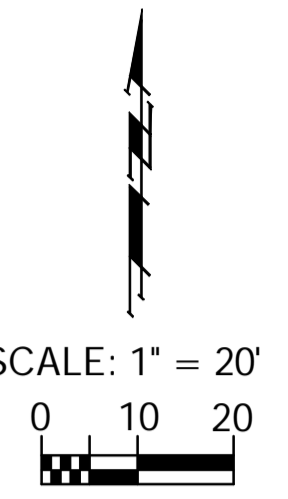


BENCHMARK:
 BM #7 - Railroad Spike in the Third High Line Pole East
 of Fern on the North Side of MacArthur
 Sta. 52+09, 4.3' Lt.
 Elev. = 94.52 City Datum

FHWA REGION NO.	STATE	PROJECT NO.	FISCAL YEAR	SHEET NO.	TOTAL SHEETS
7	KANSAS	87 N-0347-01	2007	18	123

Construct Approx. 70 L.F.
 6" Protection Curb from
 Sta. 53+60 to 54+30.



P.V.I.
 No V.C.
 Elev. = 91.39

P.V.I.
 No V.C.
 Elev. = 91.39

Existing Mailboxes that Conflict with the Proposed Construction Shall be Removed and Reset on Non-Hazardous Supports. Cost to be SUBSIDIARY to "Site Restoration."

Note:
 Pavement, Sidewalks, and Etc. To Be Removed Are Indicated By:

Note:
 Trees/Shrubs to be removed are marked thus:

Drawing File: E:\eng\MacArthur_Land\dwg\Base.dwg (Pav09)
 Project No. 0404E856 CAPITAL IMPROVEMENT PROJECT
MACARTHUR ROAD PAVING
 Sta. 48+50.00 to Sta. 54+00.00
 MACARTHUR ROAD PAVING, MERIDIAN AVENUE TO SENECA STREET

Baughman Company, P.A.
 315 Ellis St., Wichita, KS 67211 P 316-262-7171 F 316-262-0149
 ENGINEERING | SURVEYING | PLANNING | LANDSCAPE ARCHITECTURE

July 2007
 SHEET 18 OF 123