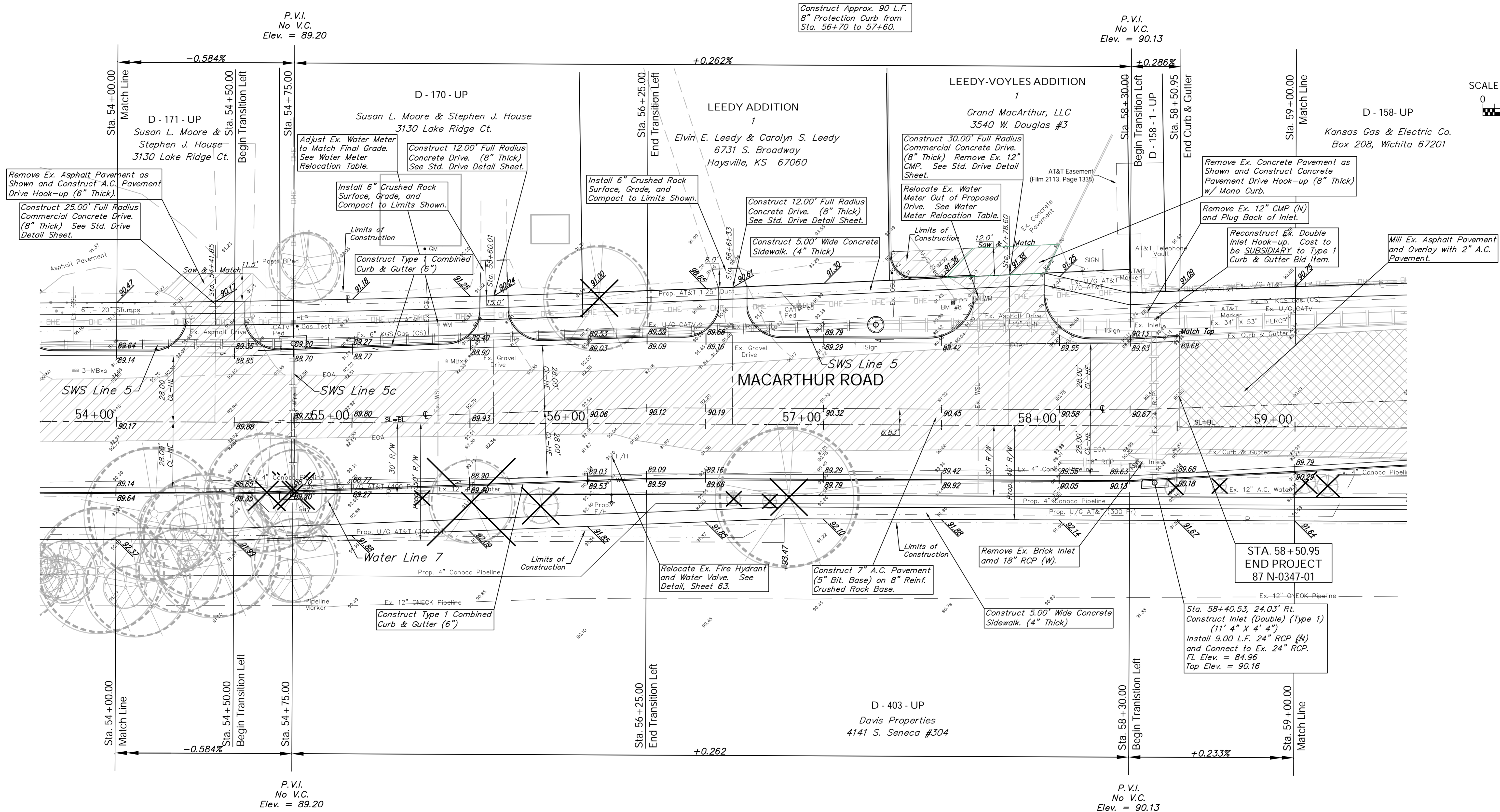
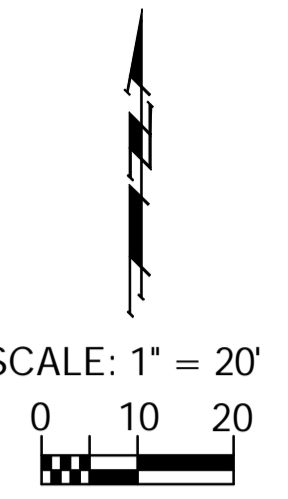


BENCHMARK:  
 BM #8 - Railroad Spike in the First Power Pole West of the  
 Car Wash Drive on the North Side of MacArthur  
 Sta. 57+56, 53' Lt.  
 Elev. = 93.11 City Datum

FHWA REGION NO.	STATE	PROJECT NO.	FISCAL YEAR	SHEET NO.	TOTAL SHEETS
7	KANSAS	87 N-0347-01	2007	19	123



Existing Mailboxes that Conflict with the Proposed Construction Shall be Removed and Reset on Non-Hazardous Supports. Cost to be SUBSIDIARY to "Site Restoration."

Note:  
 Ex. Asphalt Pavement to be Milled and Overlaid are Indicated by:

Note:  
 Pavement, Sidewalks, and Etc. To Be Removed Are Indicated By:

Note:  
 Trees/Shrubs to be removed are marked thus:

Drawing File: E:\eng\MacArthur\_Land\dwg\Base.dwg (Pav10)  
 Project No. 0404E856 CAPITAL IMPROVEMENT PROJECT  
 Design: TPV  
 Drawn: STAFF  
 Approved: TPV  
 Scale: NOTED

MACARTHUR ROAD PAVING  
 Sta. 54+00.00 to Sta. 59+00.00  
 MACARTHUR ROAD PAVING - MERIDIAN AVENUE TO SENECA STREET

**Baughman Company, P.A.**  
 315 Ellis St., Wichita, KS 67211 P 316-262-0149 F 316-262-0149  
 ENGINEERING | SURVEYING | PLANNING | LANDSCAPE ARCHITECTURE

July 2007  
 SHEET 19 OF 123