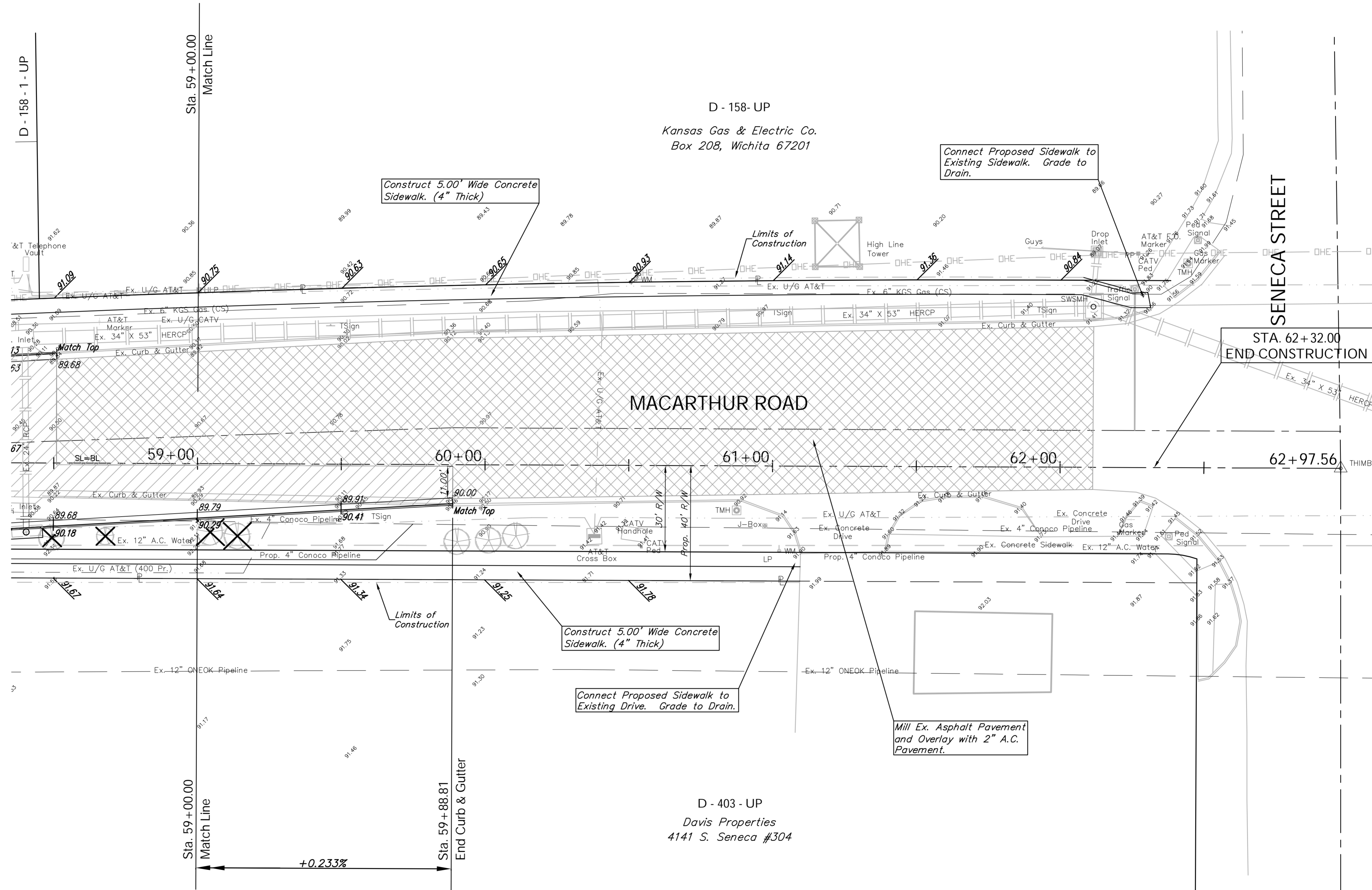
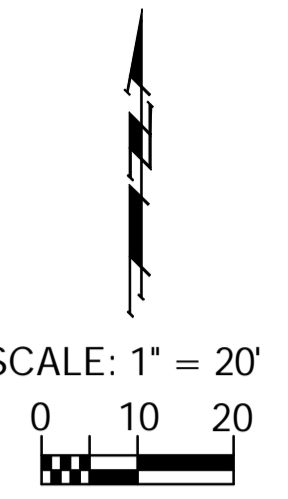


BENCHMARK:
 BM #8 - Railroad Spike in the First Power Pole West of the
 Car Wash Drive on the North Side of MacArthur
 Sta. 57+56, 53' Lt.
 Elev. = 93.11 City Datum

FHWA REGION NO.	STATE	PROJECT NO.	FISCAL YEAR	SHEET NO.	TOTAL SHEETS
7	KANSAS	87 N-0347-01	2007	20	123



Note:
 Ex. Asphalt Pavement to be Milled and Overlaid are Indicated by:

Note:
 Pavement, Sidewalks, and Etc. To Be Removed Are Indicated By:

Note:
 Trees/Shrubs to be removed are marked thus:

Drawing File: E:\eng\MacArthur\Land\dwg\Base.dwg (Pav10a)
 Design: TPV
 Drawn: STAFF
 Approved: TPV
 Scale: NOTED

Project No. 0404E856 CAPITAL IMPROVEMENT PROJECT
MACARTHUR ROAD PAVING
 Sta. 59+00.00 to Sta. 62+32
 MACARTHUR ROAD PAVING - MERIDIAN AVENUE TO SENECA STREET

Baughman Company, P.A.
 315 Ellis St., Wichita, KS 67211 P 316-262-7171 F 316-262-0149
 ENGINEERING | SURVEYING | PLANNING | LANDSCAPE ARCHITECTURE

July 2007
 SHEET 20 OF 123