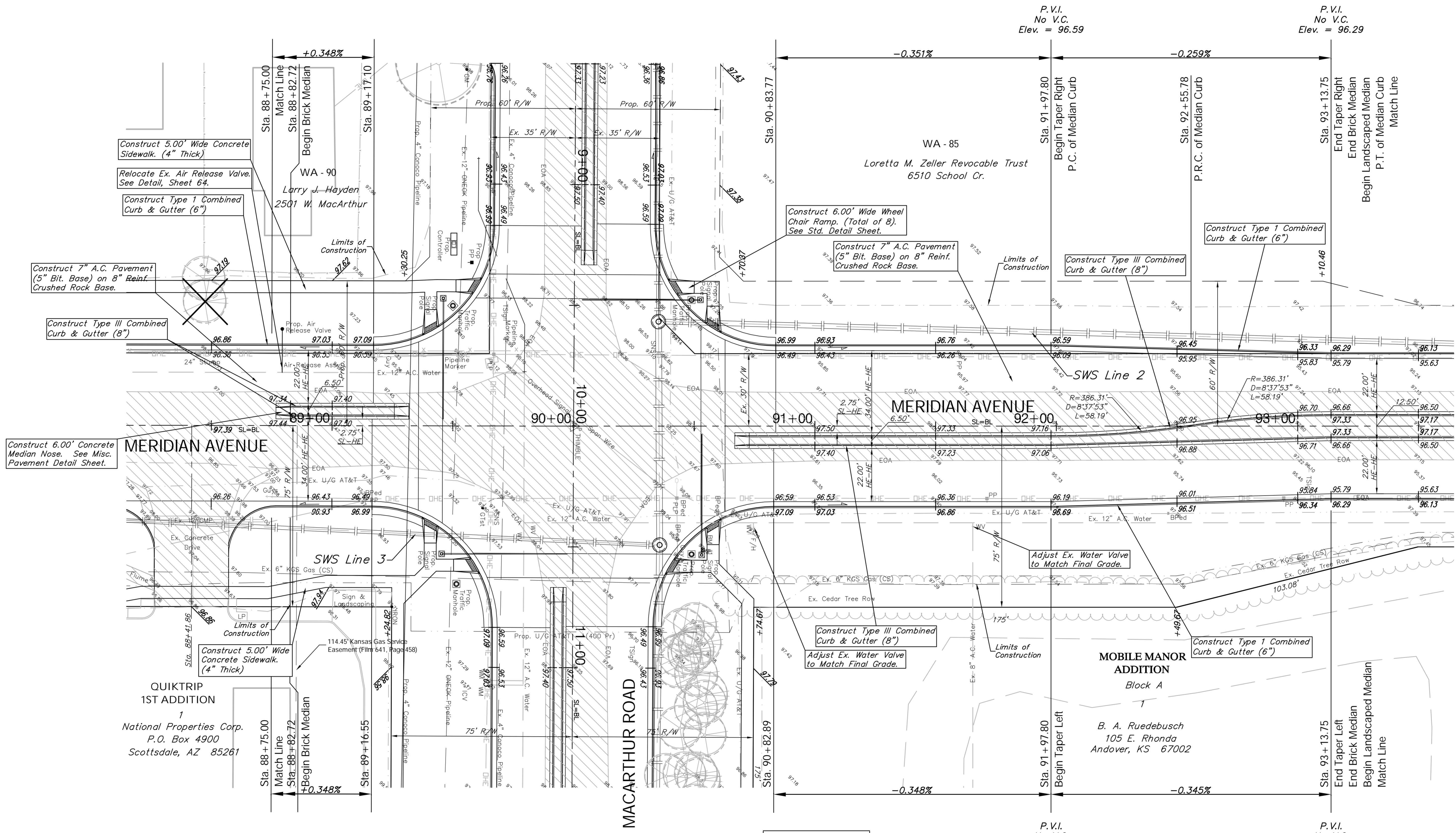
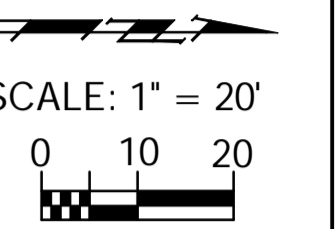


BENCHMARK:
 BM #1 - City of Wichita Disc Located in the Northeast Corner
 of the Intersection of Meridian and MacArthur
 Sta. 10+51, 54' Lt.
 Elev. = 97.46 City Datum

FHWA REGION NO.	STATE	PROJECT NO.	FISCAL YEAR	SHEET NO.	TOTAL SHEETS
7	KANSAS	87 N-0347-01	2007	22	123



Construct 6.00' Concrete Median Nose. See Misc. Pavement Detail Sheet.

Construct 5.00' Wide Concrete Sidewalk. (4" Thick)
 Relocate Ex. Air Release Valve. See Detail, Sheet 64.
 Construct Type I Combined Curb & Gutter (6")

Construct 7" A.C. Pavement (5" Bit. Base) on 8" Reinf. Crushed Rock Base.

Construct 6.00' Wide Wheel Chair Ramp. (Total of 8). See Std. Detail Sheet.

Construct 7" A.C. Pavement (5" Bit. Base) on 8" Reinf. Crushed Rock Base.

Construct Type III Combined Curb & Gutter (8")

Construct Type I Combined Curb & Gutter (6")

Construct 5.00' Wide Concrete Sidewalk. (4" Thick)

Construct Type III Combined Curb & Gutter (8")
 Adjust Ex. Water Valve to Match Final Grade.

Construct Type I Combined Curb & Gutter (6")

Note:
 Pavement, Sidewalks, and Etc. To Be Removed Are Indicated By:



P.V.I.
 No V.C.
 Elev. = 96.59

P.V.I.
 No V.C.
 Elev. = 96.29

P.V.I.
 No V.C.
 Elev. = 96.69

P.V.I.
 No V.C.
 Elev. = 96.29

Drawing File: E:\eng\MacArthur\Land\dwg\Base.dwg (Pav12)

Project No. 0404E856 CAPITAL IMPROVEMENT PROJECT
MERIDIAN AVENUE PAVING
 Sta. 88+75.00 to Sta. 93+13.75
 MACARTHUR ROAD PAVING, MERIDIAN AVENUE TO SENECA STREET

Baughman Company, P.A.
 315 Ellis St., Wichita, KS 67211 P 316-262-7171 F 316-262-0149
 ENGINEERING | SURVEYING | PLANNING | LANDSCAPE ARCHITECTURE

July 2007
 SHEET 22 OF 123