

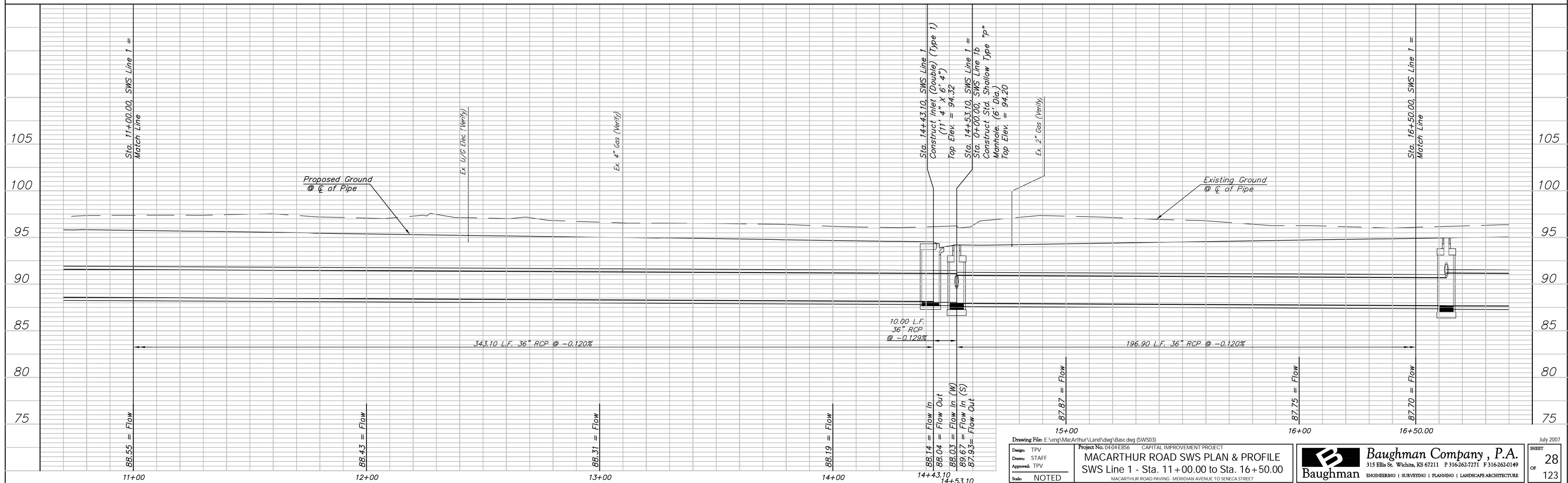
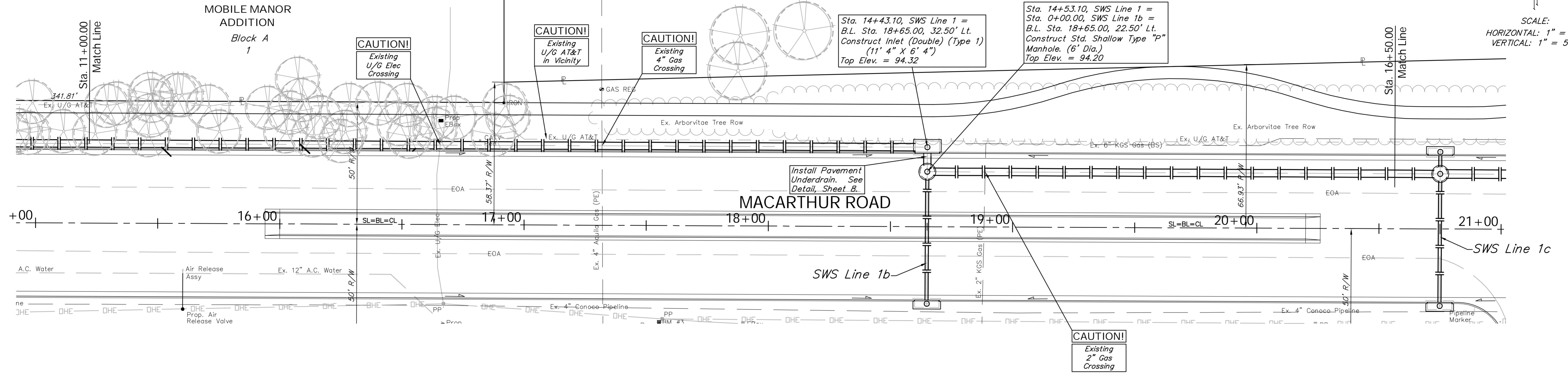
BENCHMARK:
 BM #3 - Railroad Spike in the North Face of the Second
 High Line Power Pole East of the MacArthur Quik
 Trip Entrance and South of MacArthur
 Sta. 17+55, 40' Rt.
 Elev. = 98.92 City Datum

FHWA REGION NO.	STATE	PROJECT NO.	FISCAL YEAR	SHEET NO.	TOTAL SHEETS
7	KANSAS	87 N-0347-01	2007	28	123

Install 207 L.F. Sand Back Fill,
 Flushed & Vibrated, to the Top
 of the Pipe from Sta. 14+43.10
 to Sta. 16+50.00

SCALE:
 HORIZONTAL: 1" = 20'
 VERTICAL: 1" = 5'

D-173-UP



Drawing File: E:\eng\MacArthur\Land\dwg\Base.dwg (SWS03)

Project No. 0404E856 CAPITAL IMPROVEMENT PROJECT
MACARTHUR ROAD SWS PLAN & PROFILE
 SWS Line 1 - Sta. 11+00.00 to Sta. 16+50.00
 MACARTHUR ROAD PAVING - MERIDIAN AVENUE TO SENECA STREET

Baughman Company, P.A.
 315 Ellis St., Wichita, KS 67211 P 316-262-7171 F 316-262-0149
 ENGINEERING | SURVEYING | PLANNING | LANDSCAPE ARCHITECTURE

July 2007
 SHEET 28
 OF 123