

**BENCHMARK:**  
 BM #4 - Railroad Spike in the First High Line Pole West of the East Mobile Home Park Drive on the South Side of MacArthur  
 Sta. 25+70, 40' Rt.  
 Elev. = 98.59 City Datum

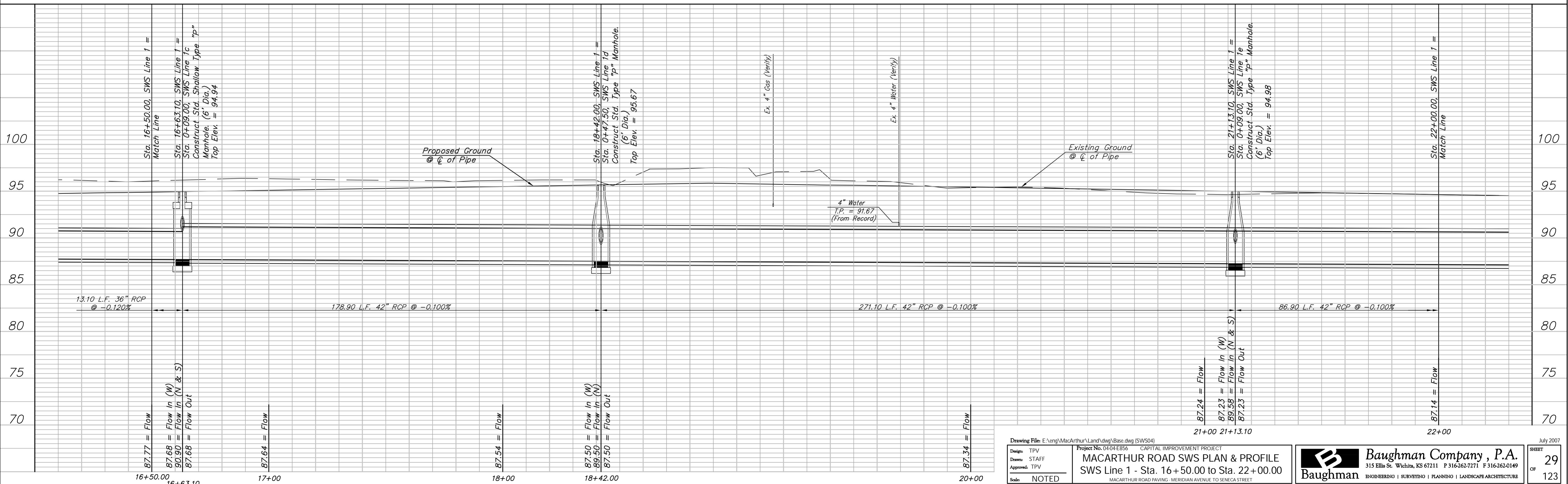
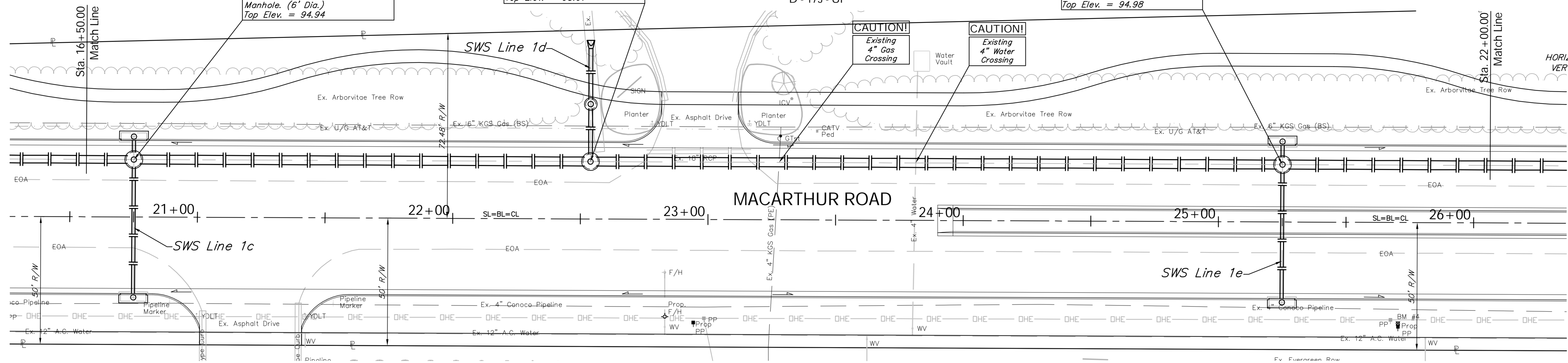
FHWA REGION NO.	STATE	PROJECT NO.	FISCAL YEAR	SHEET NO.	TOTAL SHEETS
7	KANSAS	87 N-0347-01	2007	29	123

Sta. 16+63.10, SWS Line 1 =  
 Sta. 0+09.00, SWS Line 1c =  
 B.L. Sta. 20+75.00, 22.50' Lt.  
 Construct Std. Shallow Type "p"  
 Manhole. (6' Dia.)  
 Top Elev. = 94.94

Sta. 18+42.00, SWS Line 1 =  
 Sta. 0+47.50, SWS Line 1d =  
 B.L. Sta. 22+53.90, 22.50' Lt.  
 Construct Std. Type "p"  
 Manhole. (6' Dia.)  
 Top Elev. = 95.67

Install 550 L.F. Sand Back Fill,  
 Flushed & Vibrated, to the Top  
 of the Pipe from Sta. 16+50.00  
 to Sta. 22+00.00

Sta. 21+13.10, SWS Line 1 =  
 Sta. 0+09.00, SWS Line 1e =  
 B.L. Sta. 25+25.00, 22.50' Lt.  
 Construct Std. Type "p"  
 Manhole. (6' Dia.)  
 Top Elev. = 94.98



Drawing File: E:\eng\MacArthur\Land\dwg\Base.dwg (SWS04)  
 Project No. 0404E856 CAPITAL IMPROVEMENT PROJECT  
**MACARTHUR ROAD SWS PLAN & PROFILE**  
 SWS Line 1 - Sta. 16+50.00 to Sta. 22+00.00  
 MACARTHUR ROAD PAVING - MERIDIAN AVENUE TO SENECA STREET  
 Scale: NOTED

**Baughman Company, P.A.**  
 315 Ellis St., Wichita, KS 67211 P 316-262-7271 F 316-262-0149  
 ENDSERVICES | SURVEYING | PLANNING | LANDSCAPE ARCHITECTURE

July 2007  
 SHEET 29 OF 123