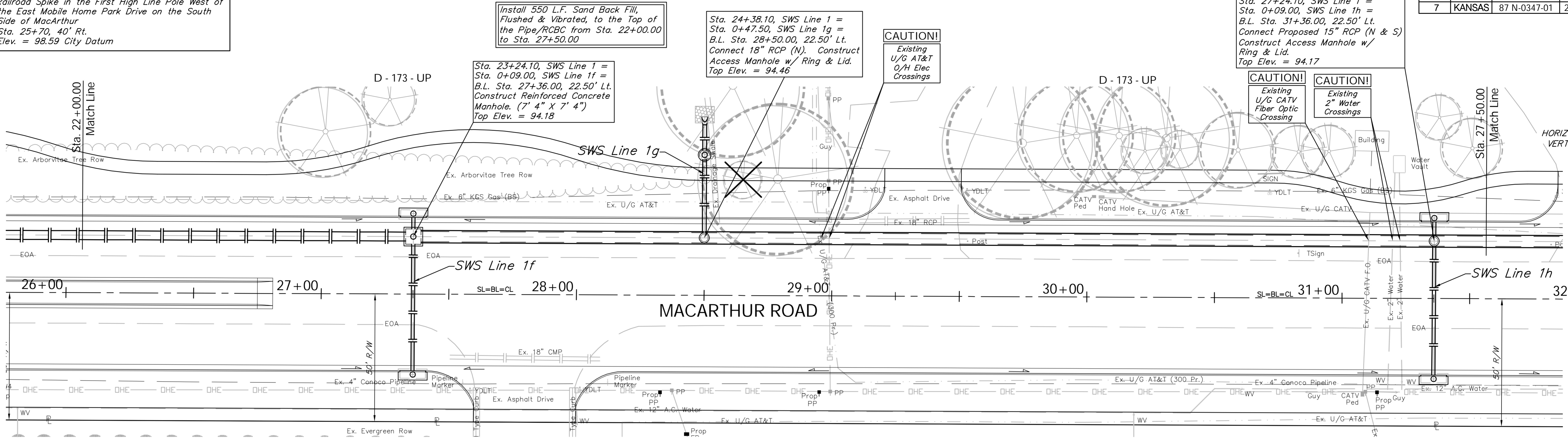
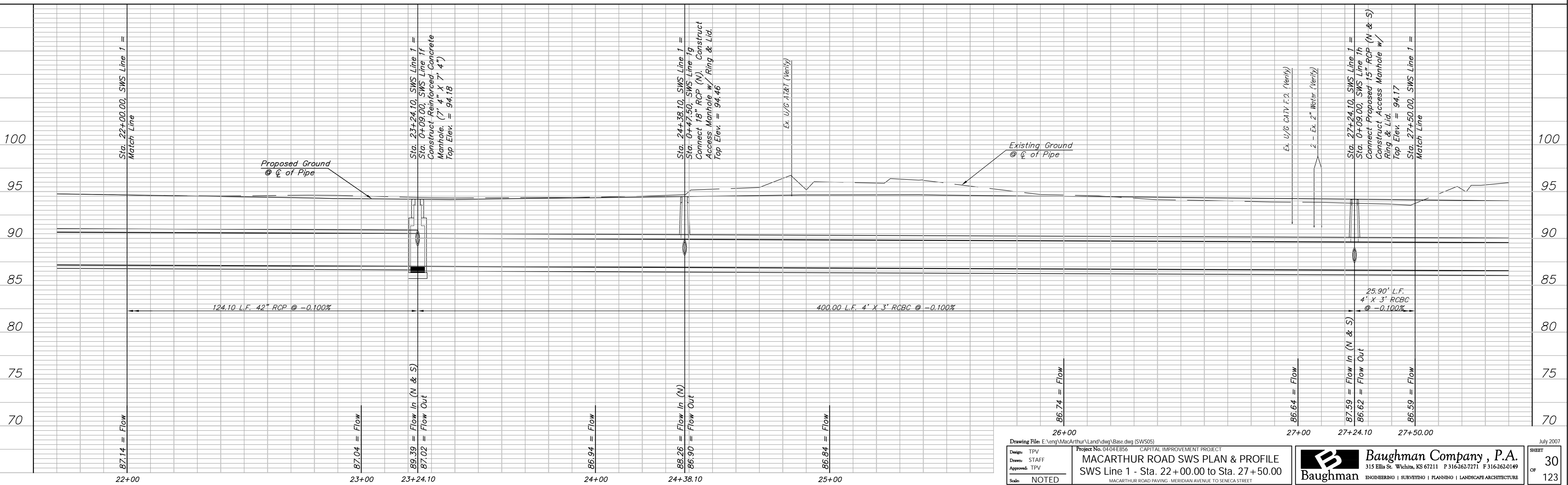


BENCHMARK:
 BM #4 - Railroad Spike in the First High Line Pole West of the East Mobile Home Park Drive on the South Side of MacArthur
 Sta. 25+70, 40' Rt.
 Elev. = 98.59 City Datum

FHWA REGION NO.	STATE	PROJECT NO.	FISCAL YEAR	SHEET NO.	TOTAL SHEETS
7	KANSAS	87 N-0347-01	2007	30	123



SCALE:
 HORIZONTAL: 1" = 20'
 VERTICAL: 1" = 5'



Drawing File: E:\eng\MacArthur\Land\dwg\Base.dwg (SWS05)
 Project No. 0404E856 CAPITAL IMPROVEMENT PROJECT
MACARTHUR ROAD SWS PLAN & PROFILE
 SWS Line 1 - Sta. 22+00.00 to Sta. 27+50.00
 MACARTHUR ROAD PAVING - MERIDIAN AVENUE TO SENECA STREET

Design: TPV
 Drawn: STAFF
 Approved: TPV
 Scale: NOTED

July 2007
 SHEET 30 OF 123

Baughman Company, P.A.
 315 Ellis St., Wichita, KS 67211 P 316-262-7171 F 316-262-0149
 Baughman ENGINEERING | SURVEYING | PLANNING | LANDSCAPE ARCHITECTURE