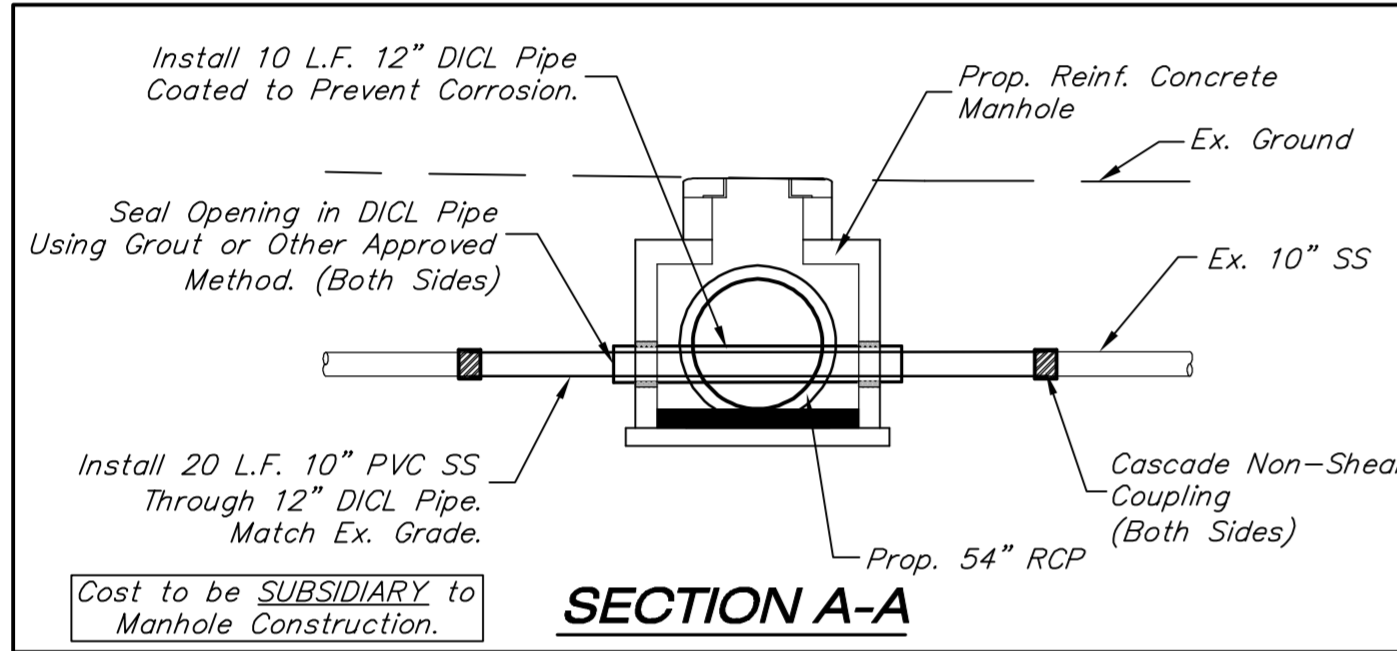
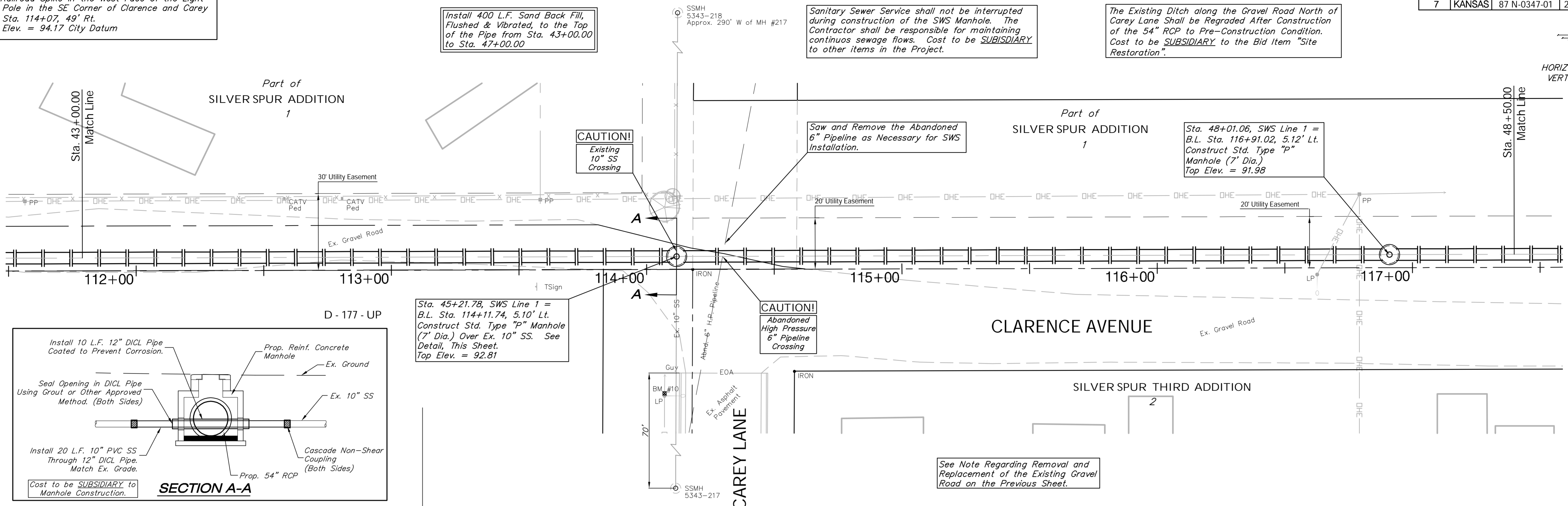


**BENCHMARK:**  
 BM #10 - Railroad Spike in the West Face of the Light Pole in the SE Corner of Clarence and Carey Lane. Sta. 114+07, 49' Rt. Elev. = 94.17 City Datum

FHWA REGION NO.	STATE	PROJECT NO.	FISCAL YEAR	SHEET NO.	TOTAL SHEETS
7	KANSAS	87 N-0347-01	2007	34	123

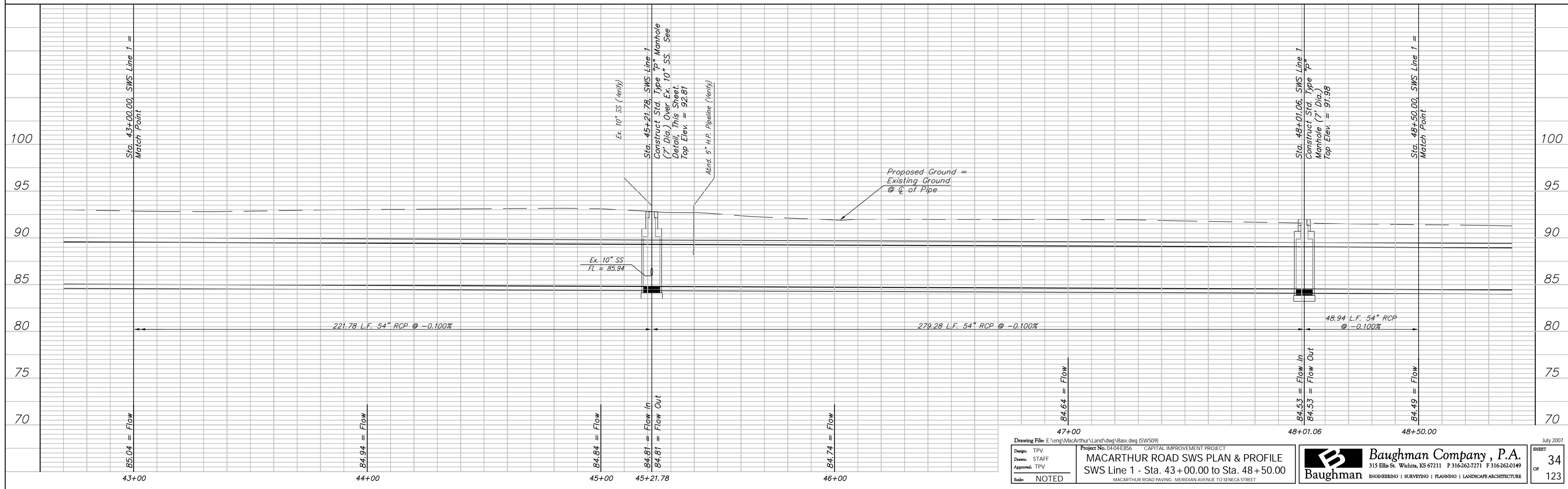
SCALE:  
 HORIZONTAL: 1" = 20'  
 VERTICAL: 1" = 5'



Sta. 45+21.78, SWS Line 1 = B.L. Sta. 114+11.74, 5.10' Lt. Construct Std. Type "P" Manhole (7' Dia.) Over Ex. 10" SS. See Detail, This Sheet. Top Elev. = 92.81

Sta. 48+01.06, SWS Line 1 = B.L. Sta. 116+91.02, 5.12' Lt. Construct Std. Type "P" Manhole (7' Dia.) Top Elev. = 91.98

See Note Regarding Removal and Replacement of the Existing Gravel Road on the Previous Sheet.



Drawing File: E:\eng\MacArthur\Land\dwg\Base.dwg (SWS09)

Project No. 04-04-E856 CAPITAL IMPROVEMENT PROJECT  
**MACARTHUR ROAD SWS PLAN & PROFILE**  
 SWS Line 1 - Sta. 43+00.00 to Sta. 48+50.00  
 MACARTHUR ROAD PAVING - MERIDIAN AVENUE TO SENECA STREET

**Baughman Company, P.A.**  
 315 Ellis St., Wichita, KS 67211 P 316-262-7271 F 316-262-0149  
 ENDSERVICES | SURVEYING | PLANNING | LANDSCAPE ARCHITECTURE

July 2007  
 SHEET 34 OF 123